

# KITCHEN + BATH IDEAS

Store  
More!  
56 Simple  
Ideas

## Refresh Your Look

- > Add Stylish Lighting
- > Update Cabinets
- > Replace Appliances

SEPTEMBER/  
OCTOBER 2012  
Display until October 9

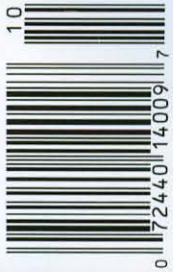
\$6.99 U.S.

**MAKE A  
SMALL KITCHEN  
FEEL BIGGER**

p. 36

**+ Designer Tips for a Better Bath**

BHG SIP Yellow Checkout



BHG.com/KitchenBath



The old bath lacked noteworthy accents. This dramatic chandelier steps up the style and adds an elegant focal point.

An intricate stone mosaic outlined with mother of pearl tile creates a ruglike pattern to frame the tub area.





**TUB**  
York traditional double-ended tub | \$2,910  
Victoria & Albert  
800/421-7189  
vandabaths.com



**SHOWER WALL TILE**  
Bloom Pattern field tile in Root Brown | \$70 per square foot  
Artistic Tile  
877/237-4097  
artistictile.com



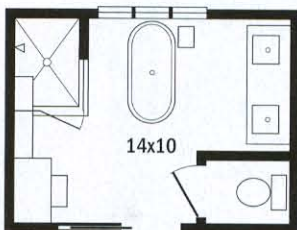
**LIGHT FIXTURE**  
Elizabeth rock crystal double sconce | \$1,575  
Circa Lighting  
877/762-2323  
ciricalighting.com



**FAUCET**  
Perrin & Rowe Georgian Era widespread | \$1,056  
Rohl  
800/777-9762  
rohlhome.com

## THE SOLUTIONS

1. Rethinking the floor plan brings a new flow to the space. Rotating the tub provides a new direction to the bath and allows the vanities to relocate to take advantage of the window's light, and a new toilet room adds privacy to the otherwise open space (*not illustrated*).
2. Floor-to-ceiling window treatments make the room feel taller, while the bold and colorful fabric adds a playful element.
3. From the glossy shower surround to the handmade ceramic flooring and the elaborate tub area inset, tile is a substantial upgrade that brings color and texture into this new design.
4. Shapely fixtures, such as the freestanding tub filler, showerheads, and vanity faucets, mirror the stateliness of the room's decorative accents.



**AFTER**

## CUSTOM BUDGET

### FIXTURES

Rohl Michael Berman thermostatic shower package in chrome	\$4,428
Rohl Perrin & Rowe Georgian Era exposed floor-mount tub filler with handshower in chrome	\$4,217
Victoria & Albert York tub	\$2,910
Rohl Perrin & Rowe Georgian Era 3-hole high-neck C-spout widespread faucet in chrome	\$2,112

### CABINETRY

Empire Priva 72-inch vanity in dark cherry, Carrara marble top, two white undermount sinks, polished chrome shoes, and two mirrors	\$4,473
--	---------

### SURFACES

Artistic Tile Bloom Pattern, Root Brown gloss crackle dimensional field tile shower walls	\$4,900
Artistic Tile Crème Horta polished stone mosaic and white mother of pearl liner	\$3,850
Seneca Tiles 4x4-inch floor tile in Amethyst	\$1,733
Seneca Tiles herringbone mosaic tile for shower floor in Amethyst	\$772
Osborne & Little Rabanna Canestra wallcovering in Shell Mica	\$587

### MISCELLANEOUS

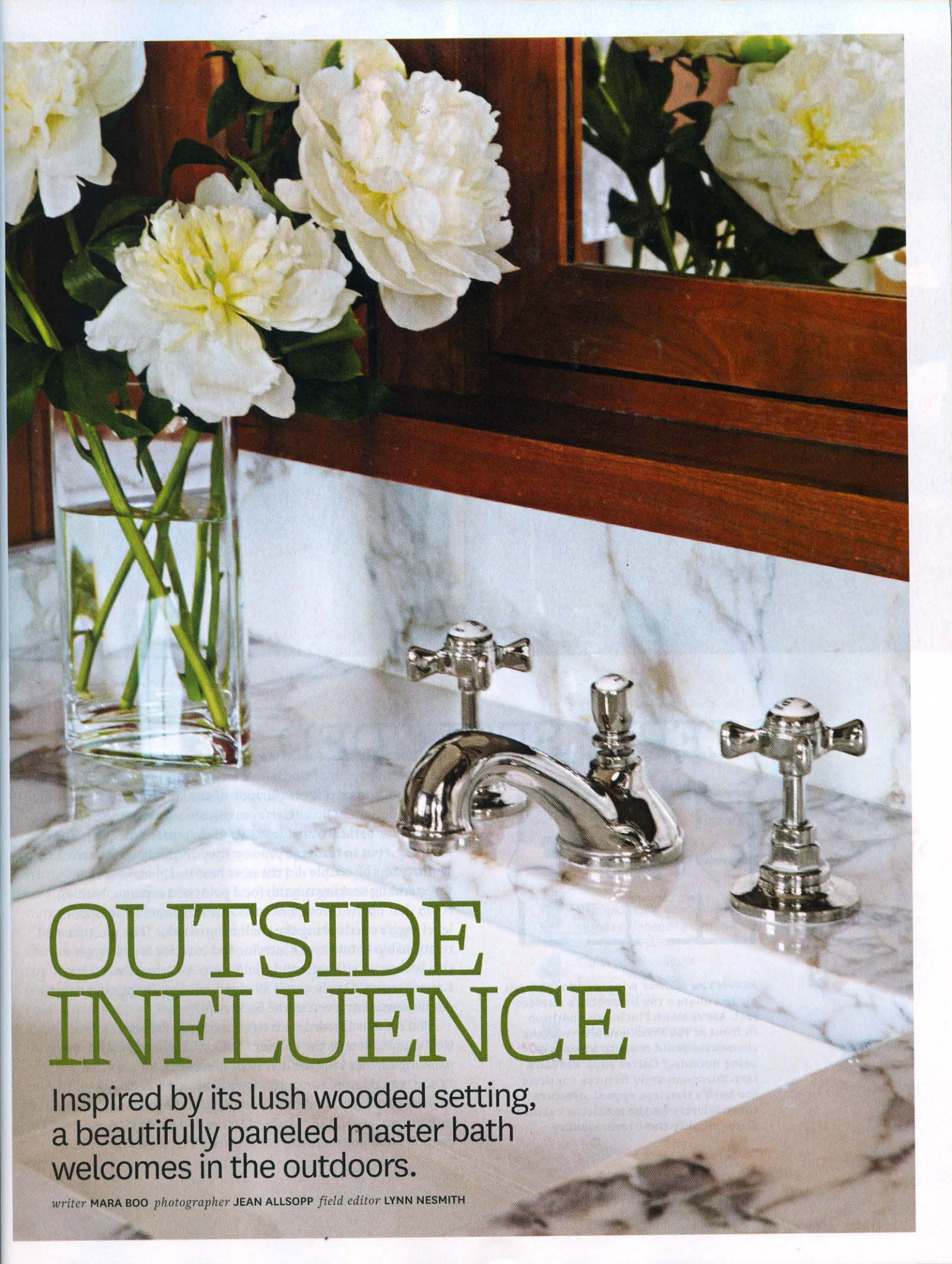
Circa Lighting Elizabeth rock crystal double sconce and two single scones for vanity mirrors	\$3,675
Made Goods Fiona chandelier over tub	\$2,800
Made Goods Katherine mirror at makeup vanity	\$1,495
Circa Lighting Hurlay chandelier in polished nickel above makeup vanity	\$1,260
Couef Alana mini ottoman with storage	\$1,190
Osborne & Little Maharani fabric drapes	\$675

### TOTAL

**\$41,077**

*prices are estimates, excluding installation*





# OUTSIDE INFLUENCE

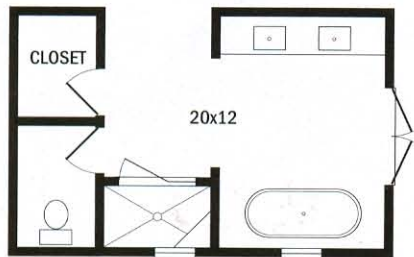
Inspired by its lush wooded setting,  
a beautifully paneled master bath  
welcomes in the outdoors.

writer MARA BOO photographer JEAN ALLSOPP field editor LYNN NESMITH





## DEEPLY SECLUDED



**ABOVE:** The shower window admits fresh air to enhance the bathroom's outdoor feel. **ABOVE RIGHT:** Placing the bathtub in front of the French doors "was the closest we could come to actually being outside," Carter says. **OPPOSITE LEFT:** European-style fixtures continue the bath's timeless appeal. **OPPOSITE RIGHT:** Mirrors on the medicine cabinet doors amplify their functionality.

among the towering pine trees and fragrant magnolias of northern Florida, Karen and Steve Wagner's master bathroom reflects the look of the surrounding woods. Interior designer Oliver Carter originally suggested the couple locate their bathtub outside. "They didn't go for the idea," he says, laughing, "but in terms of privacy, they certainly could have."

Instead, the couple did the next best thing, making their freestanding soaking tub the focal point of a separate bathing room that opens through majestic French doors to an upper-level loggia overlooking the sheltering woods. "The multifaceted relationship between the interior and exterior is what makes this bathroom so successful," architect William Sabella says. Karen agrees: "Our house is all about outdoor living, and so we emphasized that, even in the bathroom."

The room is flooded with light, from the French doors as well as a window in the shower. Walls with distinguished cherry paneling further blur the distinction between indoors and out. "The connection to the outdoors is achieved by echoing all the wood on the loggia and the woods beyond," Carter says. Rich rather than rustic, the wood's elegance is amplified by marble counters and polished-chrome fixtures. The materials were





carefully selected to suit the design preferences of both Steve and Karen. “Too often, we have preconceived notions of masculine and feminine,” Carter says. “I can picture this as the bathroom Jackie Kennedy might have used on Onassis’ yacht.”

The room’s intimate scale is another reason Carter favored its fine, fitted sensibility. “The space isn’t grand,” he says, “so we wanted the quality of the room to be very beautiful.” Light ceilings create a sense of openness. “It’s a soothing combination of feeling warm without feeling trapped,” Carter says.

A smart blend of spaces individually dedicated to bathing, showering, and sinkside activities allows Karen and Steve to comfortably use the bathroom simultaneously. “We weren’t going for a big, glamorous bathroom,” Karen says. “Ours is the equivalent of a cozy butler’s pantry.” And just as functional. A linen closet tucks into the toilet room; two integrated medicine cabinets virtually disappear into the paneling yet provide plenty of storage in combination with below-counter drawers and cabinets—all cherrywood, of course. “The quality of this bathroom is timeless,” Carter says. “It will still look great for years.” **KBI**

RESOURCES BEGIN ON PAGE 132.

## Takeaways

- 1** French doors welcome natural light.
- 2** Marble counters and polished hardware are luxe additions.
- 3** Paneled walls echo the wooded outdoor setting.
- 4** Light-color ceilings balance the mostly dark finishes.
- 5** Integrated storage contributes a fitted feel.





# trading places

MODERN MEETS  
TRADITIONAL IN  
THIS REDEFINED  
MASTER BATH.

writer KRISTINA MCGUIRK  
photographer ALISE O'BRIEN  
field editor BONNIE BROTEN



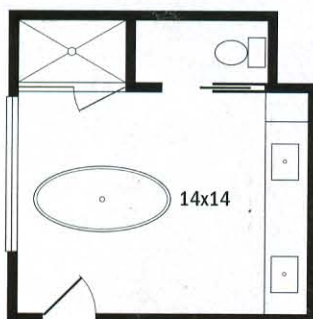


**OPPOSITE:** An old office becomes a chic new bath complete with a focal-point freestanding tub. **THIS PHOTO:** The ultramodern chandelier is a transplant from the owners' Manhattan apartment.





**FAR LEFT:** Glass penny-round tiles in vibrant hues are a fresh twist on traditional style. **LEFT:** Polished plumbing fixtures mimic the shiny finish of the chandelier (not shown). **OPPOSITE:** Floating cabinetry creates an airy look without compromising storage.



## Takeaways

- 1** Repurposing space makes room for a new master bath.
- 2** Placing the vanity opposite the windows maximizes light.
- 3** An egg-shaped tub and modern chandelier add dramatic flair.
- 4** The right mix of small details and large fixtures merges contemporary and traditional styles.

**S**aying good-bye to their cramped Manhattan apartment, Carol and Jamie Lister knew exactly what they were looking for in a new home: space. “We were anxious for our kids to grow up and not live in a tiny box any longer,” Carol says.

The couple found an idyllic home in St. Louis—brick exterior, dreamy interior courtyard, and plenty of room. The house had many great features, but the long, narrow bath in the master suite was underwhelming. Overall, the house was also a little too traditionally styled for the Listers’ modern tastes, so they looked to designers Jane Ganz and Julie Picco to give them the layout and look they desired.

The home’s original floor plan included two home offices near the master bedroom and an adjacent bath—one office too many for the Listers. So they turned the second office into a spacious master bath; the original bath became a dressing room and closet that connects the new master suite.

A bank of windows provides light and anchors the bath. Opposite the window wall, a floating double vanity with an oversize mirror balances the room. The mirror reflects the windows’ light and is backlit for added ambience. Undercabinet lights intensify the vanity’s floating effect. “From there, it sort of shaped itself,” Carol says of the new bath. The shower and the toilet compartment tucked perfectly into the wall opposite the dressing room entrance. At the center of the room, “the spaciousness of the bath with the large windows made a perfect setting for a freestanding tub,” Ganz says.

The room had a layout and focal point, but the details needed defining. To set the mood, the Listers repurposed the light fixture above the tub from their former home’s entryway. Inspired by the chandelier, Ganz struck a balance between Carol’s ultramodern tastes and the neighborhood’s classic aesthetic. The penny-tile shower walls have a glossy but spa-like palette, and the metallic-finish walls, polished-slate floors, and streamlined plumbing fixtures are casually modern.

Trading super-chic style for spacious, easy living, the Listers found a perfect fit. Carol calls their hybrid look “comfortable modern”—a fresh fashion she and Jamie carried into the rest of their new-home makeover. **KBI** RESOURCES BEGIN ON PAGE 132.





## 104-111 SIMPLE PLANS

**Kitchen designer**—Jonas Carnemark, CR, CKD, Carnemark Systems + Design, Inc.; 301/657-5000; [carnemark.com](http://carnemark.com). **Builder/contractor**—Carnemark Systems + Design, Inc.; 301/657-5000; [carnemark.com](http://carnemark.com). **Range**—Thermador; 800/735-4328; [thermador.com](http://thermador.com). **Range hood**—Best By Broan; in the United States: 800/558-1711; in Canada: 877/896-1119; [bestbybroan.com](http://bestbybroan.com). **Refrigerator**—LG Electronics USA, Inc.; 866/473-5554; [lgappliances.com](http://lgappliances.com). **Microwave**—Sharp Electronics Corp.; 800/237-4277; [sharpusa.com](http://sharpusa.com). **Cabinetry**—SieMatic; 215/604-1350; [siematic.com](http://siematic.com). **Countertops: perimeter**—Silestone by Cosentino USA; 800/291-1311; [silestoneusa.com](http://silestoneusa.com); **island**—Pyrolave UK; [pyrolave-architecture.com](http://pyrolave-architecture.com). **Sink**—Franke Kitchen Systems Division; 800/626-5773; [frankeksd.com](http://frankeksd.com). **Faucet, pot filler**—Dornbracht USA, Inc.; 800/774-1181; [dornbracht.com](http://dornbracht.com). **Flooring**—Porcelanosa Ferroker; 201/995-1310; [porcelanosa-usa.com](http://porcelanosa-usa.com). **Wood table**—Spekva; [spekva.com](http://spekva.com).



## 112-115 GLORIOUS GRAYS

**Builder**—Great Neighborhood Homes; 952/807-8765; [greatneighborhoodhomes.com](http://greatneighborhoodhomes.com). **Designer**—Carrie Rodman, Martha O'Hara Interiors; 952/908-3150; [oharainteriors.com](http://oharainteriors.com). **Tub Era**—Jacuzzi; 800/288-4002; [jacuzzi.com](http://jacuzzi.com). **Faucets**—Rohl; 800/777-9762; [rohlhome.com](http://rohlhome.com). **Cabinetry custom**—Admiral Wood Products; 952/435-7304. **Hardware**—The Brass Handle, Inc.; 952/927-7777; [brass-handle.com](http://brass-handle.com). **Countertops** Vermont Danby marble—Terrazzo & Marble Supply Co. of Minnesota; 877/867-5227; [tmsupply.com](http://tmsupply.com). **Shower tile** Fabric by Mirage—Rubble Tile Co.; 952/938-2599; [rubbletile.com](http://rubbletile.com). **Flooring hickory**—check with local suppliers. **Flooring stain** Stone Gray—Dura Seal; 800/364-1359; [duraseal.com](http://duraseal.com). **Lighting**—Filament Lighting; 888/926-5007; [filamentlighting.com](http://filamentlighting.com). **Rug Dotted Delight**—Julie Dasher Rugs; 612/558-8767; [juliedasherrugs.com](http://juliedasherrugs.com). **Mirrors, glass custom**—Great Reflections; 763/746-8010. **Wallpaper** Darly in Oyster—Designers Guild; 212/967-4540; [designersguild.com](http://designersguild.com). **Paint: vanities** Praise Giving; **mirrored built-in cabinet** Zen Retreat; **ceiling** Metro—Columbia Paint; [columbiapaint.com](http://columbiapaint.com) [P]. **Window treatments custom**—Martha O'Hara Interiors; 952/908-3150; [oharainteriors.com](http://oharainteriors.com).



## 116-119 OUTSIDE INFLUENCE

**Architect**—William Sabella; 850/543-3379. **Interior architecture**—Oliver Carter, Neil Carter Architects, 404/815-0026, [oncarter.com](http://oncarter.com). **Bathtub, tub faucet and fixtures, shower fixtures**—Sunrise Specialty Co.; 800/444-4280; [sunrisespecialty.com](http://sunrisespecialty.com). **Cabinetry**—Cabinet Resources; 770/932-9910; [cabinetresources.com](http://cabinetresources.com). **Flooring limestone**—Seashore; 850/267-3677; [seashorefloor.com](http://seashorefloor.com). **Doors, windows**—EF San Juan; 850/722-4830; [efsanjuan.com](http://efsanjuan.com).





## 120-123 TRADING PLACES

Interior designers—Jane Ganz, ASID, and Julie Picco, ASID, Directions in Design; 314/205-2010; [didstl.com](http://didstl.com). **Tub Napoli**—Victoria + Albert Bath; 800/421-7189; [vandabaths.com](http://vandabaths.com). **Tub filler**—Hansgrohe; 800/334-0455; [hansgrohe-usa.com](http://hansgrohe-usa.com). **Sinks** Verticyl rectangular undermount in Ice Grey; sink faucets Symbol in polished nickel—Kohler Co.; 800/456-4537; [us.kohler.com](http://us.kohler.com). **Cabinetry**, floating vanity Focus Series doors in white high gloss—Crystal Cabinet Works, Inc.; 800/347-5045; [crystalcabinets.com](http://crystalcabinets.com). **Cabinetry hardware**—Top Knobs USA, Inc.; 800/499-9095; [topknobsusa.com](http://topknobsusa.com). **Countertops** solid surfacing in Pearl—Staron; 562/229-1310; [staron.com](http://staron.com). **Vanity mirror**—Electric Mirror; 425/776-4946; [electricmirror.com](http://electricmirror.com). **Flooring** honed slate in Green Gold—ISC Surfaces; 800/392-2181; [iscsurfaces.com](http://iscsurfaces.com). **Flooring, shower and niche glass tile** Icelandic Blue—AKDO; 800/811-2536; [akdo.com](http://akdo.com). **Walls, shower** Chapter 8 Courtly—Jeffrey Court; 951/340-3383; [jeffreycourt.com](http://jeffreycourt.com). **Shutters** Woodlore—Norman Shutters; [normanshutters.com](http://normanshutters.com). **Spa benches** Soho Grand ottoman—Van Guard Furniture; 828/328-5601; [vanguardfurniture.com](http://vanguardfurniture.com). **Ottoman upholstery** Mukumi in Rain Drop—S. Harris; 800/999-5600; [sharris.com](http://sharris.com).



## 124-127 SHORELINE ELEGANCE

Architect—Michael Gorski, AIA, Michael Gorski Architect; 203/595-0830; [michaelgorski.com](http://michaelgorski.com). **Contractor**—Paul Kline, Kline Construction; 970/376-5233. **Interior designers**—Tricia Izzo and Carolyn Kron, Shelter Interiors; 203/341-9535; [shelterinteriorsllc.com](http://shelterinteriorsllc.com). **Shower, faucets** Michael Smith Collection, sinks—Kallista; 888/452-5547; [kallista.com](http://kallista.com). **Cabinetry, hardware**—Crown Point Cabinetry; 800/999-4994; [crown-point.com](http://crown-point.com). **Countertops** Blue Lagos limestone; tile Lagos Azul limestone—Ceramic Design, Ltd.; 203/454-0032; [ceramicdesignltd.com](http://ceramicdesignltd.com). **Tilework**—Tommy Cappola, Cappola Tile Work, 203/585-6953. **Painting**—Manuel Orellana Painting, 203/969-4134. **Drawer organizers** linen, Lucite, metal pail—Target Stores; 800/800-8800; [target.com](http://target.com) (product line varies). **Storage baskets, vanity basket, standing mirror, bath towels**—Waterworks; 800/998-2284; [waterworks.com](http://waterworks.com). **Flower vases, silver trays, shower basket**—Nielsen's Florist and Gift Shop; 203/655-2543; [nielsen Florist.com](http://nielsen Florist.com). **Guest towels**—Good Food Good Things; 203/655-7355. **Specialty soaps, bath products, body creams, scrub brushes, body brushes**—The Privet House; 860/868-1800; [privethouse.com](http://privethouse.com).



## 128-131 VINTAGE VISION

**Tub**—Kohler Co.; 800/456-4537; [us.kohler.com](http://us.kohler.com). **Tub, shower, sink fixtures**—Waterworks; 800/998-2284; [waterworks.com](http://waterworks.com). **Sinks**—Kallista; 888/452-5547; [kallista.com](http://kallista.com). **Toilet**—Toto USA, Inc.; 800/350-8686; [totousa.com](http://totousa.com). **Countertops, shower walls, backsplash, flooring** marble in Calacatta Gold—Stafford Tile and Stone; 504/895-5000; [staffordtile.com](http://staffordtile.com). **Flooring**; mosaic ceramic tiles Vibe Collection, Arabesque in Blue Shadow—Walker Zanger; 877/611-0199; [walkerzanger.com](http://walkerzanger.com). **Paint**: walls Moonshine, trim China White—Benjamin Moore; 888/236-6667; [benjaminmoore.com](http://benjaminmoore.com) [P]. **Soaps**—Aux Belles Choses New Orleans; 504/891-1009; [abcneworleans.com](http://abcneworleans.com). **Glass apothecary jars**—Restoration Hardware; 800/910-9836; [restorationhardware.com](http://restorationhardware.com). **Bath towel** Hotel Collection—Macy's; 800/289-6229; [macys.com](http://macys.com).