

# ARCHITECTURAL RECORD

CELEBRATING 125 YEARS

bnp  
media

10  
2016

\$9.95

[www.architecturalrecord.com](http://www.architecturalrecord.com)



RECORD  
INTERIORS  
2016



## Open and Shut

Eco-friendliness and technological innovation mark the latest in doors, fenestration, and hardware.

By Julie Taraska



### Fallbrook

This series of front-load, dry-glazed glass partition systems have ultrathin aluminum frames with no exposed fasteners. The frames, which accommodate 3/8"- or 1/2"-thick monolithic tempered glass, come in a choice of two finishes and two shapes of hardware.

[crl-arch.com](http://crl-arch.com)

CIRCLE 106



### Wave

Made of recycled aluminum, this set of two knobs and four pulls can be installed horizontally or vertically, changing the way the textured pattern plays with light and shadow. Pieces are hand-finished and available in a choice of satin nickel, antique brass, and oil-rubbed bronze.

[duverre.com](http://duverre.com)

CIRCLE 105



### FoldFlat

This option for NanaWall's wood WD65 and aluminum SL45 single-track systems allows telescoping doors to fold, pivot back, and stack parallel to the door opening. Up to three panels may be chained, with inward- and outward-opening doors added to the ends.

[nanawall.com](http://nanawall.com)

CIRCLE 107



### Thermi=Block 900RW

These ribbon windows, designed for low- to mid-rise commercial buildings, have a U-factor of .30 and a frame condensation resistance factor of 72. Coming in a variety of thermally broken options, each features a 2 1/4"-wide aluminum frame available in depths of 4 1/2" or 6". Standard finishes include seven anodized hues and 20 paint colors.

[tubelite.com](http://tubelite.com)

CIRCLE 108

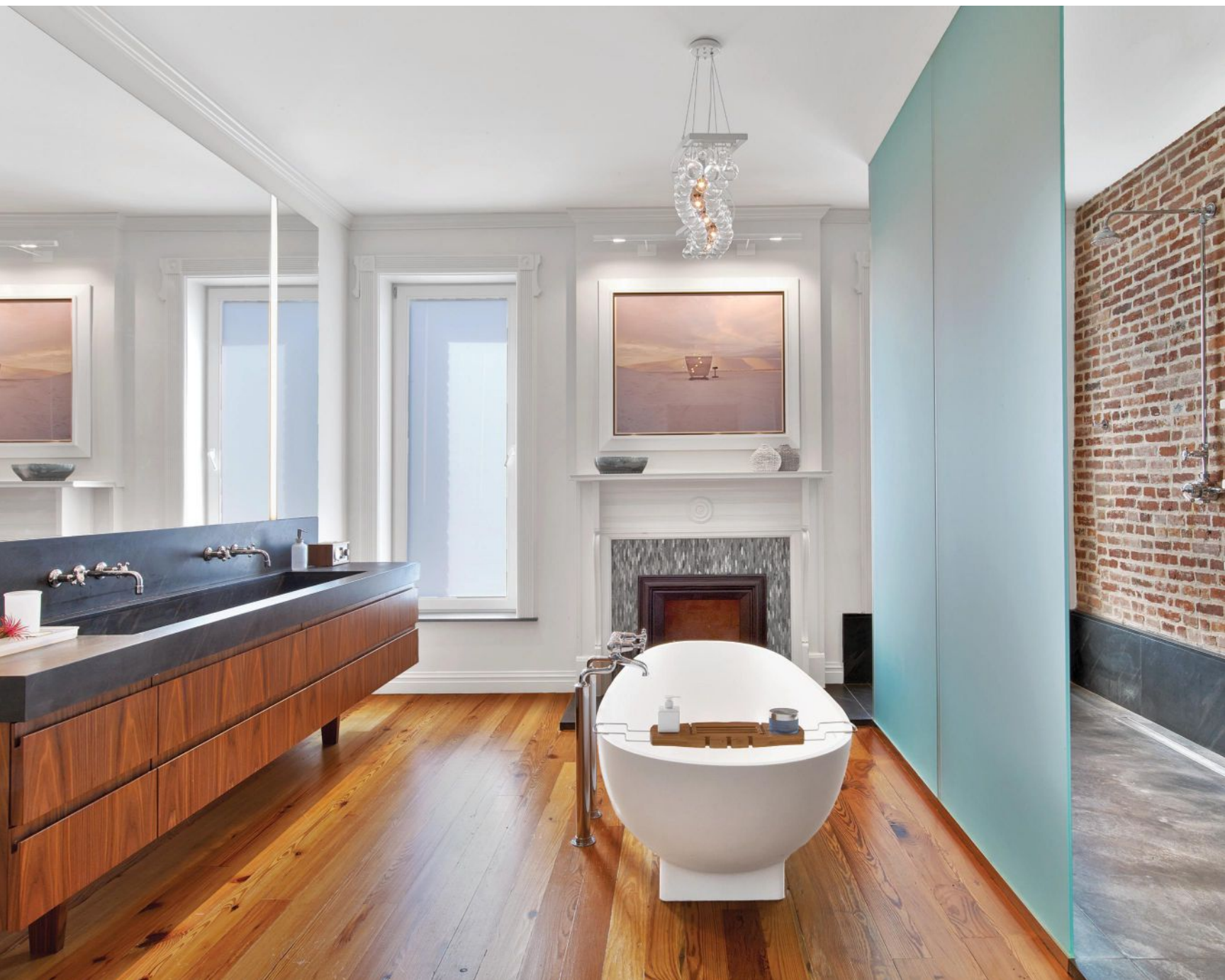


### Insynctive Sensors

Expanding upon its smart-hardware efforts, Pella is integrating security sensors into select models of its Architect, Pella, and Designer series of doors and windows. The sensors communicate with a stand-alone device that indicates whether one of the home's openings has been left ajar or unlocked; the sensors also may be synched with home-automation systems.

[pella.com](http://pella.com)

CIRCLE 109



## Park Slope Brownstone

Brooklyn, New York

Architect **Matthew Baird**

**WHILE LIFE** as a family revolves around spending time together, it also necessitates moments of peace and quiet. So when a young couple with children bought a four-story brownstone in Brooklyn, New York, they asked their architect, Matthew Baird, to transform the entire third floor into a master suite. The Manhattan-based Baird did just that, changing the spare bedroom into a spalike bathroom where modern amenities complement historic flourishes.

Baird used the room's inoperative fireplace as the focal point of the design,

initially hoping to offer his clients the ability to wash up in front of a crackling blaze. But when the unit's repair proved too complicated, the team opted to brick up the firebox, refurbish the surround with mosaic tiles, and add a Pietra Cardosa hearth. They placed a freestanding oval tub perpendicular to the fireplace, installing a bubblelike LED chandelier above the soaker to illuminate the space. Then they added a mirrored vanity with flush vertical LED strips to the tub's left, flanking the trough sink with a pair of polished chrome taps.





**IN THE MIX** By using similar color palettes, Matthew Baird united opposing materials and textures in the third-story bathroom, which was formerly a bedroom (opposite). Unadorned brick adds a rustic edge to the bathroom's double shower, which is fitted with Barber Wilson fixtures, Boffi floating shelves, and a Pietra Cardosa floor and knee wall (left).

A large double shower occupies the opposite side of the room, separated from the bath area by a frosted-glass partition. Two polished-chrome mixers on the exposed-brick wall provide a vintage feel, while a Pietra Cardosa shower floor, pitched and extended up the wall's base, echoes visual themes elsewhere in the room.

The design team retained many of the space's original materials. For example, rather than replace the existing wood floors with marble (which "would have been a shame," Baird says), they patched its damaged areas with matching salvaged heart pine, and then sanded and refinished the surface with water-resistant polyurethane.

The overall result is a harmonious collage of contrasting textures in a space unconventionally large for a historic building. "The whole design became a dialogue between old and new," says Baird of the effort. "It makes the space feel more like a living room," a place you'd want to rest and linger. —Janelle Zara

#### credits

**ARCHITECT:** Matthew Baird – Matthew Baird, principal; Bradley Kaye, project architect

**INTERIOR DESIGNER:** JMorris Design – Jennifer Morris, principal

**ENGINEER:** A Degree of Freedom (structural)

**CONSULTANTS:** Doris Kan (environment); Quality Control Laboratories (special inspection)

**GENERAL CONTRACTOR:** Downtown Renovations

**SIZE:** 240 square feet

**COST:** withheld

**COMPLETION DATE:** January 2015

#### SOURCES

**BATH FITTINGS AND FIXTURES:** Barber Wilson

**BATHTUB:** Barclay Products

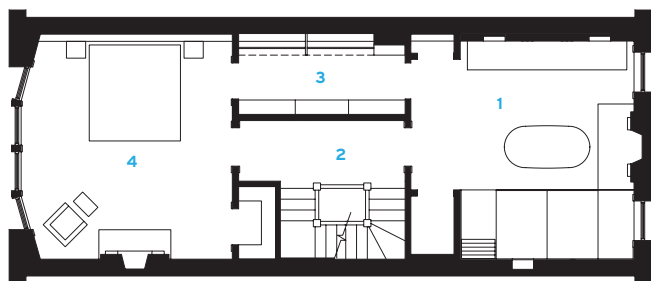
**CABINETRY AND VANITY:** McKeever Woodworks

**LIGHTING:** Lightolier (recessed lights); Modulightor (pendant)

**SINK:** Mondial Tiles

**TILE:** Artistic Tile (fireplace); Stone Source (floor and wall)

**TOILET:** Duravit



- 1 MASTER BATH
- 2 HALLWAY
- 3 CLOSET
- 4 MASTER BEDROOM

FLOOR PLAN

