

before & after kitchens AND BATHS

**SPEND
WISELY!**
10 WAYS
TO REMODEL
FOR LESS p.8

try this

Install a tile
backsplash in a
weekend p.26

2016
BHG.COM

BHG specials™

Display until April 4

0 140051 14048 7 6 1

\$9.99 U.S.

24 INSPIRING UPDATES
**Small-Space Solutions
That Really Work**
TOP APPLIANCE PICKS
—AND WHY WE LOVE THEM

before & after kitchens AND BATHS

**SPEND
WISELY!**
10 WAYS
TO REMODEL
FOR LESS p.8

try this
Install a tile
backsplash in a
weekend p.26

2016
BHG.COM

BHG specials™

Display until April 4

0 140051 14048 7 6 1

\$9.99 U.S.

24 INSPIRING UPDATES
**Small-Space Solutions
That Really Work**
TOP APPLIANCE PICKS
—AND WHY WE LOVE THEM



PURPLE REIGN

Rich materials, elegant fixtures, and pretty hues dial up drama in a bath that's sophisticated but not stuffy.

TAKEAWAYS

1. Rethinking the floor plan brings a new flow to the space. Rotating the tub provides a new direction to the bath and allows the vanities to relocate to take advantage of the window's light. A new toilet room adds privacy to the otherwise open space (*not illustrated*).
2. Floor-to-ceiling window treatments make the room feel taller, while the bold and colorful fabric provides a playful element.
3. From the glossy shower surround to the handmade ceramic flooring and the elaborate tub area inset, tile is a substantial upgrade that brings color and texture into this new design.
4. Shapely fixtures, such as the freestanding tub filler, showerheads, and vanity faucets, mirror the stateliness of the room's decorative accents.



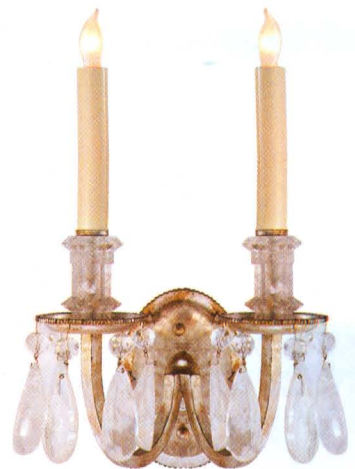
tub

York Traditional Double-Ended Tub, \$3,300, Victoria + Albert, vandabaths.com



shower wall tile

Bloom Pattern Field Tile in Root Brown, \$70 per square foot (by special order only) Artistic Tile, artistictile.com



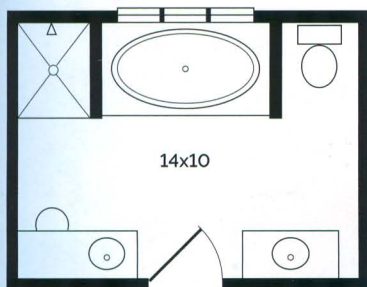
light fixture

Elizabeth Rock Crystal Double Sconce, \$1,575, Circa Lighting, ciricalighting.com

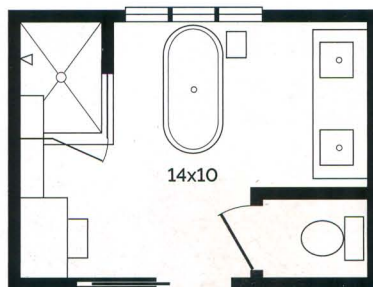


faucet

Perrin & Rowe Georgian Era High Neck Lavatory Faucet with Lever Handles in Chrome, \$889, Rohl, rohllhome.com



before



after



Small Wonder

A petite kitchen makes the most of its existing footprint to become a bright and beautiful hangout.

writer Jan Soultz Walker *photographer* Laurie Black *field editor* Shannon Quimby



high contrast

Lower cabinets are ebony, while uppers are ivory—choices that visually link the kitchen, *above*, to the Hitts' 1927 Mason & Hamlin grand piano, located in an adjoining room.

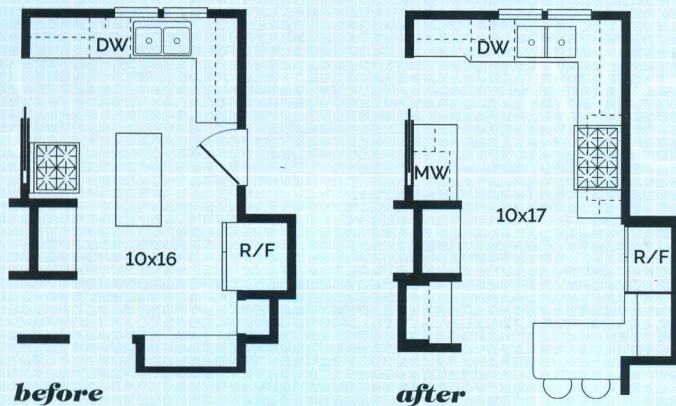
organization station

The lower cabinet in this alcove, *right*, appears built-in, but it's on wheels, so the extra counter space can be moved easily to wherever it's needed.



the plan

Removing two unnecessary doorways and easing the flow between the kitchen and dining room made this small kitchen feel bigger.



island no more

A hardworking peninsula, *opposite left*, includes seating on the dining room side and storage on the kitchen side. "When we're not entertaining, Danny and I eat at the bar counter almost every night," Vicky says.

hidden utility

Custom cabinet fronts give the French-door refrigerator (with freezer drawers) the look of a built-in cabinet, *opposite right*. The Liebherr refrigerator was a totally-worth-it splurge.

"We call it 'frumpy English kitchen goes black tie!'"

—HOMEOWNER VICKY HITT



**product
pick**

Karbon Articulating Two-Hole
Deck-Mount Kitchen Faucet,
\$1,332, Kohler Co.,
us.kohler.com

PICKING THE PERFECT FAUCET

When shopping for a faucet, remember: How it fits into your kitchen can limit—or even determine—your final selection. Count the number of holes in your existing sink or countertop. That will affect your options for handles and accessories. Also keep the following considerations in mind:

Hole spacing. If you're looking for a faucet with a lever handle on the side, spacing is particularly important. Levers will stick out a certain distance, which could interfere with an existing hole and block space for a sprayer.

Sink style. With a double-basin sink, for example, you'll need a faucet that has enough reach to get water into both sides—especially important to consider if the existing hole is off to one side.

Spout height. If your sink is installed in an island or in front of a window, you'll want to consider a shorter faucet that won't obstruct views. Taller spouts are ideal for filling large pots and pans.

Spray type. Choose from pullout, pull-down, and side sprayers based on the types of kitchen tasks you perform.

Resources

aqua accessories, sisal rug—

Simplicity Interiors Marketplace & Design; 704/604-5005;

simplicity-interiors.com. **Artwork at banquette**—Pier 1 Imports; 800/245-4595; *pier1.com*. **Blue chairs, sofa**—Lee Industries; 800/892-7150;

leeindustries.com. **Red table, mirror on mantel**—HomeGoods; 800/614-4663; *homegoods.com* (product line varies). **Faux leather rugs**—Home

South; *homesouthstores.com*. **Chevron rug, trunk coffee tables**—Joss & Main; *jossandmain.com*. **Island stools**—Grandin Road; 866/668-5962; *grandinroad.com*. **Window treatments**—West Elm; 866/428-6468;

westelm.com (product line varies). **Yellow bowl, white pitcher, aqua tray**—Target Stores; 800/800-8800;

target.com (product line varies). **Bread basket**—Pottery Barn; 800/922-5507; *potterybarn.com* (product line varies). **Yellow pot on cooktop**—Le Creuset of

America; 877/273-8738; *lecreuset.com*. Grain Matched Rift White Oak in Driftwood Grey. **doors** Aluminum in Hi Gloss White Automotive Finish and Brushed Aluminum Doors—Pacific NW Cabinetry, Master Cabinetmakers; 503/652-1268; *pacificnorthwestcabinetry.com*. **Cabinet hardware** Stainless Steel Pull RL-305128195—Richleau Hardware; 800/619-5446; *richelieu.com/us/en*. **Countertops** Chroma Quartz in Polished Alpine BQ300P—Crowleys Granite Concepts; 503/691-1628; *crowleysgranite.com*. **Backsplash tile** Techno Quartz Muretto Brick Mosaic Silver—Pental; 504/445-8600; *pentalonline.com*. **Oven** H4882BP, **cooktop** Induction KM5773, **dishwasher** G4275SCSF, **microwave speed oven** H4086BM, **microwave oven trim kit** EBA 5476—Miele Home; *mielehome.com*. **Vent hood** Modern Aire PMW16—Modernaire; *modernaire.com*. **Refrigerator** French Door E123BC60KS—Electrolux Appliances *electroluxappliances.com*. **Sink** Single Bowl SS RSS3018—Rohl Home; *rohlhome.com*. **Faucet** Concetto SS 32.665.DCO, **soap dispenser** Cosmopolitan 40.535.DCO—Grohe; *grohe.com/us*. **Garbage disposal** ISE Evolution—Insinkerator; *insinkerator.com*. **Garbage disposal flange** 3-in-1—Blanco America, Inc.; 800/451-5782; *blancoamerica.com*. **Plumbing**—George Morlan Plumbing Supply; 503/771-1145; *georgemorlan.com*. **Flooring** 2¼" Red Oak—Emerson Hardwoods; 800/820-9898; *emersonhardwoodfloors.com*. **Floor sanding and sealing**—Echelon Surfaces, Portland, Oregon; 503/239-0913. **Pendant over peninsula** Minka #62-84-PL—Destination Lighting; 800/653-6556; *destinationlighting.com*. **Walls and ceiling paint** Devine Whip—Devine Paint; *devinecolor.com*. **Windows** Clad Tilt in Frosted Glass—

Flear Glass—Marvin Windows and Doors; 888/537-8268; *marvin.com*.

Growler—Mudshark Studios LLC; 971/271-7441; *mudsharkstudios.com*.

Cutting boards against wall and under bar of soap—The Joinery; 800/259-6762; *thejoinery.com*.

Three-piece wood planter

Boxcar—Revolution Design House; *revolutiondesignhouse.com*.



Small Wonder

Pages 48–51

Architecture: Dixon Remodeling & Restoration, Inc., Portland, Oregon; 503/768-4741; *dixonremodeling.com*.

Interior designer: Clifford G. Wageman, Eastbank Interiors, Portland, Oregon; 503/233-1502; *eastbankinteriors.com*.

Cabinetry Custom: Black-Stained Maple, White Oyster on Maple—Omega Cabinetry; 319/235-5700; *omegacabinetry.com*, and Dynasty Kitchen Cabinets, Ltd.; 604/597-4511; *dynastykitchen.com*. **Cabinetry hardware** Forged 3 Recycled Aluminum—DuVerre; 416/593-0182; *duverre.com*. **Lattice above refrigerator**—Steeltæk Industries; 800/345-5507; *steeltækindustries.com*. **Countertops** 3CM Misty Carrera Polished—Caesarstone US; 818/779-0999; *caesarstoneus.com*. **Backsplash tile** Cascade Collection Blend #10; **stove backsplash** Ironworks—Pratt & Larson Ceramics, Inc.; 503/231-9464; *prattandlarson.com*. **Range** Wolf Model R366—Wolf Appliance, Inc.; 800/332-9513; *subzero-wolf.com*. **Refrigerator**



Clear Vision

Pages 44–47

Kitchen designer: Taka Nakagawa, Neil Kelly Design Center, Portland, Oregon; 866/691-2719; *neilkelly.com*.

Kitchen drawings and design

collaboration: Crystal Kennedy, CKD, Pacific NW Cabinetry; 503/652-1268; *pacificnorthwestcabinetry.com*.

Contractor: Peter Schraner, Pacific NW Cabinetry; 503/652-1268; *pacificnorthwestcabinetry.com*.

Cabinetry Custom Horizontal