

BEFORE & AFTER

BOOST CURB APPEAL

10 QUICK WEEKEND PROJECTS!
p. 6

GO INSIDE THIS 1,000 SF REMODEL
P. 42

THE BEST UPDATES:
BATHS, KITCHENS, CLOSETS & MORE

ADD STORAGE!
SMART BUILT-INS & BENCHES

MAKEOVERS THAT DON'T BREAK THE BANK



BEFORE

2017
Display until June 12

\$12.99 U.S.



BHG specials

BHG.com



A floor-mounted brass tub filler makes it easy to turn on water without having to reach across the tub.



LEFT A niche in the new bath is perfectly sized for a tub, something the old baths lacked.

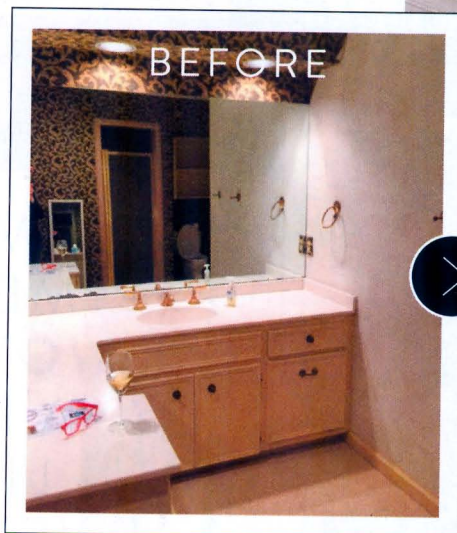
OPPOSITE LEFT Lewis shifted the home's palette a bit in the master bedroom to tone down the femininity. The upholstered headboard and bed skirt have gray in them, and the pinks turn a pale coral. Although the bedroom is a few feet smaller, Emily likes the downsized room. "The

bedroom was large, and this helped create a more intimate space and also allowed me to get my dream closet," she says.

OPPOSITE RIGHT An island anchors the master bedroom closet. Emily, a fashionista who owns the Little Rock clothing boutique Tulips, is inspired by and a stickler about organization. "I am anti-hoarder," she says. "If you have too much in your closet, it causes stress."

BEFORE The master bath was two side-by-side rooms. Consolidating (one vanity and toilet instead of two of each) made efficient use of existing space.

FAR RIGHT The main level's pale green wall color repeats on the master bath vanity in a durable lacquer finish. Marble floor tiles are laid in a classic herringbone pattern.



BOOKCASE, WHITE SLIPCOVERED CHAIRS—West Elm; 866/428-6468; westelm.com (product line varies). **WICKER TRUNK** Byholma, **WHITE FRAMES FOR COLLEGE WALL AT UPPER STAIRWAY**—IKEA; ikea-usa.com. **SOFA TABLE** custom—Don Puckett, Wood Designs; wooddesigns@comcast.net. **BRASS SCONCE AT BENCH** short-arm Isaac sconce in brass—Schoolhouse Electric Co.; 800/630-7113; schoolhouseelectric.com. **WOOD BENCH, METAL BASKET WITH SHOES**—HomeGoods; 800/614-4663; homegoods.com (product line varies).

PAGES 70-71

RANGE, HOOD—Bertazzoni; 866/905-0010; us.bertazzoni.com. **REFRIGERATOR, DISHWASHER**—Samsung; 800/726-7864; samsungusa.com. **SINK**—Whitehaus Collection; 800/527-6690; whitehauscollection.com. **FAUCET**—Cifal USA; 800/528-4904; cifalusa.com. **CABINET HARDWARE**—The Home Depot; homedepot.com (product line varies). **SHELF BRACKETS**—IKEA; ikea-usa.com. **BARSTOOLS** Toledo bar chair—Restoration Hardware; 800/910-9836; restorationhardware.com. **PENDANTS AT ISLAND** Alto Rod—Cedar & Moss, Portland, Oregon; 503/635-0820; cedarandmoss.com. **SCONCES FLANKING RANGE**—Circa Lighting; 877/762-2323; circa-lighting.com. **ACCORDIAN SCONCE** similar available—Upcycled Remains; upcycledremains.etsy.com.

PAGE 72

PENDANT LIGHTS depot pendants—Queen of Hearts Antiques, Atlanta; queenofheartsantiques-interiors.com. **FARM TABLE**—Don Puckett, Wood Designs; wooddesigns@comcast.net. **METAL CHAIRS**—Tolix; tolix.fr. **BUFFET**—Z Gallery; 800/358-8288; zgallery.com. **SCONCE**—Circa Lighting; 877/762-2323; circa-lighting.com. **GLASS LAMP**—Home Decorators Collection; 877/537-8539; homedecorators.com. **BRASS-FRAMED MIRROR**—Ballard Designs; 800/536-7551; ballarddesigns.com (product line varies).

PAGE 73

WHITE VESSEL SINK Abbett, **WALL-MOUNT FAUCET** Wall Mounted Double—Handle Antique Bathroom Basin faucet—Signature Hardware; 866/855-2284; signaturehardware.com. **SCONCES**—Schoolhouse Electric Co.; 800/630-7113; schoolhouseelectric.com. **MIRROR** Round Nautical mirror—HomeGoods; 800/614-4663; homegoods.com (product line varies).

TRADITIONAL SPIN

PAGES 80-87

INTERIOR DESIGN: Krista Lewis, K. Lewis Interior Design, Little Rock; 501/952-6952; klewisinteriordesign.com.

KITCHEN CONSTRUCTION: Jeffrey Lee, Pinnacle Home Improvement, Little Rock; 501/944-1700.

THROUGHOUT

CABINETRY custom—Renaissance Custom Cabinets, Little Rock; 501/803-3868.

TRIM PAINT Alabaster SW7008—The Sherwin-Williams Co.; 800/474-3794; sherwin-williams.com [P].

PAGE 81

STAIR CARPET—Akels Carpet One; akelscarpetone.com. **ENTRY TABLE**—Cobblestone and Vine, Little Rock; 501/219-3676; cobblestoneandvine.com. **COWHIDE**

RUG—Cynthia East Fabrics, Little Rock; 501/633-0460. **CHAIR FABRIC** Le Touches in tan by Brunschwig & Fils—through K. Lewis Interior Design, see above.

PAGE 82

WALLPAPER Lotus in Aqua by Galbraith and Paul, **RUG** custom Togo in Canvas 490 by Fibreworks, **FABRIC FOR SIDE CHAIRS** Beaded Trellis in Aqua by Thibaut—through K. Lewis Interior Design, see above. **FABRIC FOR ARM CHAIR**—Cynthia East Fabrics, Little Rock; 501/633-0460. **LAMPS ON BUFFET**—Bear Hill Interiors, Little Rock; 501/907-9272; bearhillinteriors.com. **CACHEPOT VASE ON TABLE**—Providence, Ltd., Little Rock; 501/372-1886; providenceltddesign.com.

PAGE 83

WALL PAINT Contented SW6191—The Sherwin-Williams Co.; 800/474-3794; sherwin-williams.com [P]. **RUG** custom, **DRAPERY FABRIC** Pennock in Lagoon by Thom Filicia for Kravet, **LANTERN, FABRIC FOR BLUE CHAIRS** Spa Blue by Sunbrella, **WINDOW SEAT CUSHION FABRIC** Eze in Coral by Tilton Fenwick for Duralee, **FRAMED ARTWORK** by Elaine Gleason, **SOFA LUMBAR PILLOW FABRIC** Rocat in Mint and Red by Tilton Fenwick for Duralee, **CLUB CHAIR** C.R. Laine, **TABLE SKIRT FABRIC** Sansone in Red by Thibaut—through K. Lewis Interior Design, see above. **BLUE CHAIRS**—Lee Industries; 800/892-7150; leeindustries.com. **PEDESTAL TABLE**—Pier 1 Imports; 800/245-4595; pier1.com. **CORAL VELVET PILLOWS AT WINDOW SEAT**—Pottery Barn; 800/922-5507; potterybarn.com (product line varies). **STOOL**—Providence, Ltd., Little Rock; 501/372-1886; providenceltddesign.com. **SOFA**—One Kings Lane; 855/746-7655; onekingslane.com. **BLUE PILLOWS ON SOFA**—Cynthia East Fabrics, Little Rock; 501/633-0460. **COFFEE TABLE**—Cobblestone and Vine, Little Rock; 501/219-3676; cobblestoneandvine.com.

PAGES 84-85

WALL PAINT Contented SW6191, **CABINET PAINT** Alabaster SW7008—The Sherwin-Williams Co.; 800/474-3794; sherwin-williams.com [P]. **CABINET HARDWARE**—Restoration Hardware; 800/910-9836; restorationhardware.com. **COUNTERTOP** Misty Carrera—CaesarStone US; 877/978-2789; caesarstoneus.com. **BACKSPLASH TILE**—Ann Sacks; 800/278-8453; annsacks.com. **REFRIGERATOR, WALL OVENS, DISHWASHER, STOVE TOP, HOOD**—KitchenAid; 800/422-1230; kitchenaid.com. **FRAMED ARTWORK ON SHELF** custom, **BREAKFAST CHAIRS** Phillips Scott, **FABRIC FOR BANQUETTE** Canopy Stripe by Sunbrella—through K. Lewis Interior Design, see above. **CHANDELIER**—PC Hardware, Little Rock; 501/224-1724; pchdwe.com.

PENDANTS AT ISLAND Hicks—Visual Comfort & Co.; 866/344-3875; visualcomfortlightinglights.com. **BARSTOOLS** Paris Bistro counter stools—Ballard Designs; 800/536-7551; ballarddesigns.com (product line varies). **BLUE BOWL ON ISLAND**—Phoenix Interiors, Little Rock; 501/225-0400.

PAGE 86

WALL PAINT Paperwhite SW7105, **CABINET PAINT** Contented SW6191—The Sherwin-Williams Co.; 800/474-3794; sherwin-williams.com [P]. **CABINET HARDWARE**—LuxHoldUps; luxholdups.etsy.com. **MARBLE FOR COUNTERTOPS, WALL TILE, FLOOR TILE** Casa Bianca—Inside Effects, North

Little Rock, Arkansas; 501/954-8866; insideeffects.com. **SCONCES AT VANITY** Camille—Visual Comfort & Co.; 866/344-3875; visualcomfortlightinglights.com. **TUB FILLER, SINK FAUCET, TOWEL BARS** from the Cassidy collection—Delta Faucet Co.; 800/345-3358; deltafaucet.com. **TUB** Adena Soaker—MTI; 800/783-8827; mtibaths.com. **TOWELS** Mirasol in Nectar and Nocturne by Matouk, **FABRIC FOR STOOL** Como velvet in color 2 by Charlotte Moss for Fabricut—through K. Lewis Interior Design, see above. **MIRRORS AT VANITY, SUNBURST MIRROR AT TUB**—Mirror Image Home, Los Angeles; 323/869-1700; mirrorimagehome.com. **STOOL**—Wisteria; 800/320-9757; wisteria.com.

PAGE 87 (LEFT)

WALL PAINT Paperwhite SW7105, **CABINET PAINT** Contented SW6191—The Sherwin-Williams Co.; 800/474-3794; sherwin-williams.com [P]. **CARPET**—Akels Carpet One; akelscarpetone.com. **FABRIC FOR HEADBOARD AND DUST SKIRT** Lady Mendel in Oyster by Robert Allen for Madcap Cottage, **DUVET COVER, PILLOW SHAMS** Mirasol in Opal by Matouk—through K. Lewis Interior Design, see above. **PINK PILLOW**—Cynthia East Fabrics, Little Rock; 501/633-0460. **BEDSIDE TABLE** Perceptions by Drexel Heritage—through Cantrell Furniture Design Center, Little Rock; 501/225-3679; cantrellfurniture.com. **LAMP**—Marshall Clements, Little Rock; 501/954-7900; marshallclements.com. **FRAMED INTAGLIOS**—Providence, Ltd., Little Rock; 501/372-1886; providenceltddesign.com.

PAGE 87 (RIGHT)

TRIM, WALL, AND CABINET PAINT Contented SW6191—The Sherwin-Williams Co.; 800/474-3794; sherwin-williams.com [P]. **COUNTERTOP** Casa Bianca—Inside Effects, North Little Rock, Arkansas; 501/954-8866; insideeffects.com. **CLOTHES RODS AND BRACKETS** custom by Helser Brothers—through K. Lewis Interior Design, see above. **CABINET HARDWARE**—LuxHoldUps; luxholdups.etsy.com. **CARPETING** Antelope carpet by Masland—through C&F Flooring and Rug Gallery, Little Rock; 501/943-1119. **CEILING FIXTURE** Lynn flush-mount by Aerin Lauder—Visual Comfort & Co.; 866/344-3875; visualcomfortlightinglights.com.

A HOME IN BALANCE

PAGES 88-92

CONSTRUCTION: Case Design/Remodeling, Inc., Bethesda, Maryland; 301/229-4600; casesdesign.com.

FRONT DOOR from the Craftsman collection in cherry with English chestnut stain, **WINDOWS FLANKING DOOR**—Simpson Door Co.; 800/952-4057; simpsondoor.com.

SCONCES FLANKING FRONT DOOR AND GARAGE DOOR Harbor lanterns in anchor bronze finish—Hinkley Lighting; 800/446-5539; hinkleylighting.com. **DOOR HARDWARE** Addison in aged bronze finish—Schlage Lock Co.; 800/847-1864; schlage.lock.com. **KNOCKER** 0195 in oil-rubbed bronze—Baldwin Hardware Corp.; 800/566-1986; baldwinhardware.com. **GARAGE DOOR** Coachman insulated steel door—Clipay Building Products Co.; 800/225-6729; clipaydoor.com. **EXTERIOR PAINT** Croquet from the Aura series—Benjamin Moore; 855/724-6802; benjaminmoore.com [P].