

Our 50<sup>th</sup> Year 1965–2015

# KITCHEN + BATH IDEAS

## Small Spaces

Make the Most of Every Inch

**PRETTY  
POWDER  
ROOM  
UPDATES**

p. 34

**Cabinetry:  
What to Know  
Before You Buy**

p. 12

**Love This  
Kitchen?  
Shop the  
Look!**

p. 32



SUMMER 2015  
Display until September 1  
\$6.99 U.S.

A vaulted ceiling and a palette of crisp blue-gray and white contribute to this bath's spaciousness. The wife's custom vanity features cabriole legs and a lowered makeup table.



# SWEET INDULGENCE

A breezy master bath  
blends understated  
cottage charm with  
high-tech luxury.

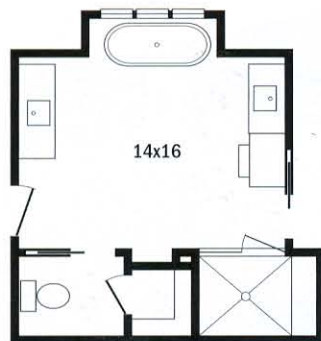
writer ANDRIA HAYDAY  
photographer BRIE WILLIAMS  
field editor ANDREA CAUGHEY





## AS THEY PLANNED THEIR NEW

**ABOVE:** Straight legs distinguish the husband's vanity from its more feminine counterpart across the room. White trim merges neatly with the beams, enhancing the room's clean lines. **ABOVE RIGHT:** An eye-catching chandelier emphasizes the vaulted ceiling's soaring height. **OPPOSITE LEFT:** A display niche separates the shower from the toilet compartment (far right, not shown). **OPPOSITE RIGHT:** In the shower, marble and glass mosaic tile adds a contemporary touch.



home in Charlotte, Chrys and Ches Riley envisioned a "little bit of indulgence" in the master bath. Chrys pictured herself slipping into a footed tub, turning on the sound system, and enjoying a languid soak after their two preschoolers were off to bed. Ches, on the other hand, wanted a body-blasting shower and the high-tech toilet-bidet he'd seen during a Vegas getaway. They both agreed on the style, though: a calm, uncluttered look in keeping with the nostalgic charm of the house itself.

The architectural style is "transitional farmhouse," says their designer-builder, Mary Ludemann. The interior has a clean cottage look, she says, "but it's not overtly modern."

Like the adjacent bedroom, the bath has antique heart-pine floors and board-and-batten walls. A vaulted ceiling dramatizes the vanity area, pairing with a gabled bump-out that frames the tub. Opposite the windows are a marble-lined shower, the toilet compartment, and a linen closet that's cleverly tucked behind a display niche. The ceiling in the shower is lower than in the rest of the bath for a practical reason: The tankless water heater fits overhead, in the attic. "It delivers a lot of steamy-hot water on demand," Ludemann says.



## 102-107 GRAY MATTER

**Kitchen design**—Caren Bistany, Bistany Design; 704/375-8322; [bistanydesign.com](http://bistanydesign.com). **Architect**—Kenn James, Shrader Design; 704/277-2788. **Builder**—Michael Palmer, MJ Palmer Construction LLC; 704/622-6979. **Interior designer**—Patti Schulte, Casa Bella Interior Design; 704/942-1622. **Range, refrigerator**—Thermador; 800/735-4328; [thermador.com](http://thermador.com). **Cabinetry design custom**—Caren Bistany, Bistany Design; 704/375-8322; [bistanydesign.com](http://bistanydesign.com). **Cabinetry custom manufacture**—Dutch Made Inc.; 260/657-3311; [dutchmade.com](http://dutchmade.com). **Countertops Delicatus granite**—Tile Collection; 704/541-8453; [tilecollection.com](http://tilecollection.com). **Sink**—Elkay; 630/574-8484; [elkayusa.com](http://elkayusa.com). **Faucet**—Grohe America, Inc.; 800/201-3407; [groheamerica.com](http://groheamerica.com). **Flooring Porcelain Tile Edimax Materia Forte in Oxida**—Crossville Tile; 931/484-2110; [crossvilleinc.com](http://crossvilleinc.com). **Lighting**—Hubbardton Forge; 800/826-4766; [hubbardtonforge.com](http://hubbardtonforge.com). **Paint: walls Bleeker Beige in Eggshell, ceiling, trim Navajo White in Satin**—Benjamin Moore; 888/236-6667; [benjaminmoore.com](http://benjaminmoore.com) [P]. **Doors, windows Low e3 High Efficiency**—Lincoln Windows & Patio Doors; 800/967-2461; [lincolnwindows.com](http://lincolnwindows.com). **Insulation sprayed foam**—Icynene; 800/758-7325; [icynene.com](http://icynene.com). **Barstools**—Cathy Jones Interiors; 704/578-9037; [cathyjonesinteriors.com](http://cathyjonesinteriors.com). **Pottery, white dishes and bowls**—Crate & Barrel; 800/967-6696; [crateandbarrel.com](http://crateandbarrel.com). **Oils, silver tray and bowls, tea towels**—Target Stores; 800/800-8800; [target.com](http://target.com). **White platter, vase**—Macy's; 800/289-6229; [macys.com](http://macys.com). **Glassware purple**—homeowner's collection. **White pots, silver vase**—Wholesale Flowers; 619/295-4333; [wholesaleflowersandsupplies.com](http://wholesaleflowersandsupplies.com). **Tray for waters**—World Market; 877/967-5362; [worldmarket.com](http://worldmarket.com).



## 108-113 IDEA CENTRAL

**Architect**—Chris Reebals, Christopher Architecture and Interiors; 205/413-8531; [christopherai.com](http://christopherai.com). **Interior designer**—Angel Davis, Christopher Architects; 205/413-8531; [christopherai.com](http://christopherai.com). **Range Icon Series**—Electrolux Home Products; 877/435-3287; [electroluxappliances.com](http://electroluxappliances.com). **Refrigerator Monogram Series in Stainless Steel**—GE Appliances; 800/626-2000; [geappliances.com](http://geappliances.com). **Cabinetry, leaded-glass windows custom**—Christopher Architecture and Interiors; 205/413-8531; [christopherai.com](http://christopherai.com). **Cabinetry hardware, drawer pulls rubbed bronze**—Beeson Hardware Co.; 336/821-2170; [beesondecorative.com](http://beesondecorative.com). **Backsplash subway tile**—Robert F. Henry Tile; 205/592-8615; [henrytile.com](http://henrytile.com). **Countertops Crema Marfil marble**—check with local suppliers. **Island countertops sweetgum wood planks, flooring white oak**—Thomas Downs, The Southern Timber Framers LLC; 205/229-4148; [southerntimberframer.com](http://southerntimberframer.com). **Island color custom**—Daniel Whitsel, Paintworks Design Studio; 205/296-5638; [paintworksdesignstudio.com](http://paintworksdesignstudio.com). **Sink**—Houzer; 800/880-3639; [houzersink.com](http://houzersink.com). **Faucet**—Kohler Co.; 800/456-4537; [us.kohler.com](http://us.kohler.com). **Paint Neutral Ground**—The Sherwin-Williams Co.; 800/474-3794; [sherwin-williams.com](http://sherwin-williams.com) [P].



## 114-119 PEACEFUL TRANSITION

**Contractor, builder**—Scott M. Walker, McMurray, Inc.; 847/486-9393; [mcmurrayinc.com](http://mcmurrayinc.com). **Interior designer**—Marcelle Frey, Marcelle Frey Design—Los Angeles; 702/376-3555. **Range**—Wolf Appliance, Inc.; 800/332-9513; [wolfappliances.com](http://wolfappliances.com). **Refrigerator**—Sub-Zero, Inc.; 800/222-7820; [subzero.com](http://subzero.com). **Cabinetry, millwork**—McMurray, Inc.; 847/486-9393; [mcmurrayinc.com](http://mcmurrayinc.com). **Countertops Carrara marble**—check with local suppliers. **Backsplash tile**—Ann Sacks; 800/278-8453; [annsacks.com](http://annsacks.com). **Faucet Vir Stil Minimal** by Laura Kirar—Kallista; 888/452-5547; [kallista.com](http://kallista.com). **Chandelier Venini Midcentury**—Filament Lighting; 888/926-5007; [filamentlighting.com](http://filamentlighting.com). **Stools Cappellini**—All Modern; 800/615-9703; [allmodern.com](http://allmodern.com).



## 120-123 SWEET INDULGENCE

**Designer**—Mary Ludemann, New Old, LLC; 704/975-5196; [newold.com](http://newold.com). **Tub**—Victoria & Albert; [vandabaths.com](http://vandabaths.com). **Bath fixtures**—American Standard; 800/899-2614; [americanstandard-us.com](http://americanstandard-us.com). **Toilet**—Toto USA, Inc.; 800/350-8686; [totousa.com](http://totousa.com). **Vanities**—