

# Beautiful KITCHENS & BATHS

**FIND  
YOUR STYLE!**

36 INSPIRING LOOKS

30 MOST  
INNOVATIVE  
PRODUCTS  
OF THE YEAR  
*page 33*

RANGES  
THAT ARE  
WORTH THE  
SPLURGE

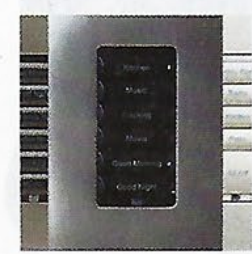
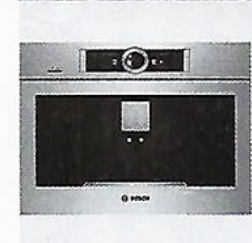
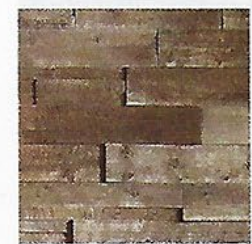
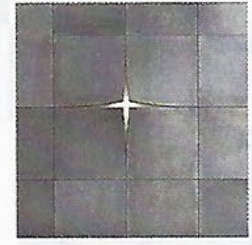
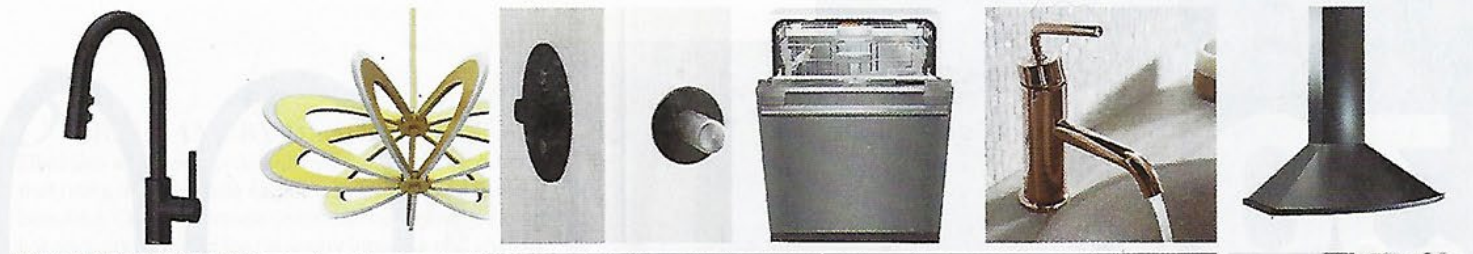
OUR FAVORITE  
DESIGNS FOR  
KITCHEN ISLANDS

GET A WOW BATH  
WITH TILE & STONE

SPRING 2018  
Display until June 11  
[BHG.com/KitchenBath](http://BHG.com/KitchenBath)



**BHG** specials™



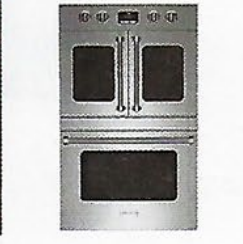
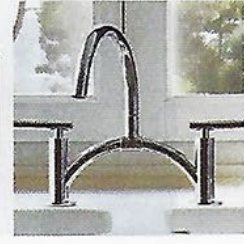
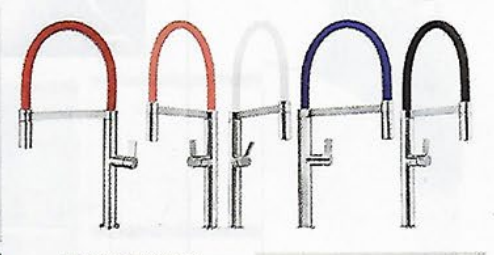
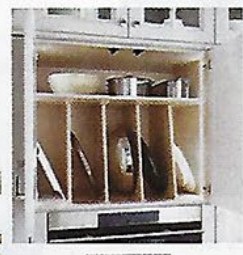
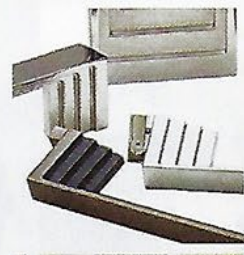
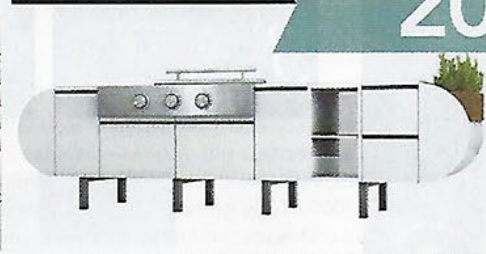
# 30

## MOST INNOVATIVE PRODUCTS™

*Combine futuristic technology, stylish staples, and state-of-the-art function, and you get sophisticated designs that delight and surprise.*

WRITER *Debra Steilen*

2018



## 2 ORGANIC DESIGN

Flowing water partners naturally with an Artist Editions sink that celebrates the subtle coloring and pebbled texture of exotic stingray leather. Each Shagreen sink's organic pattern is unique. Artist Editions Shagreen Collection (\$665). Kohler; [us.kohler.com](http://us.kohler.com)

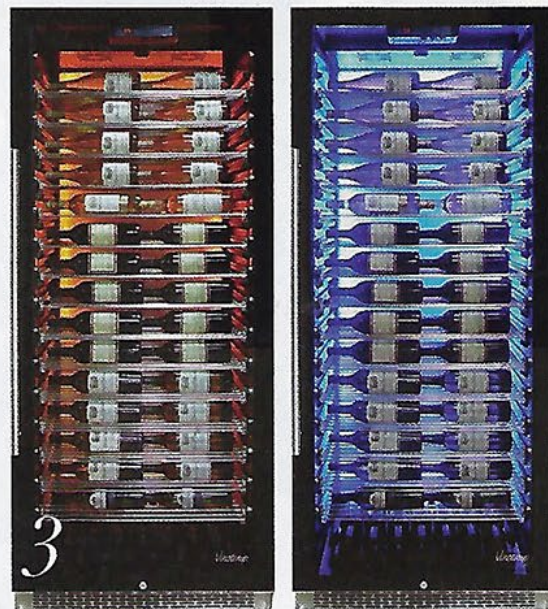
## 3 BRIGHT IDEA

Showcase up to 15 cases of wine in a cooler with three interior LED lighting options: Soft White, Amber, and Vinotemp. BioBlue. Stainless-steel gliding wine racks cradle bottles so labels are front and center. Private Reserve Series Wine Coolers (\$2,999 for 141-bottle capacity; \$3,995 for 188-bottle, shown). Vinotemp; [vinotemp.com](http://vinotemp.com)



## MATCH YOUR MOOD

Brighten your kitchen—and your mood—with a stainless-steel arched faucet that wears interchangeable silicone sleeves in Pure White, Jet Black, and Ruby Red. Additional sleeve colors include Ocean Blue, Navy Blue, Greenery, and Coral Pink. Ibiza faucet (\$159; extra sleeves \$24 each). Ruvati; [ruvati.com](http://ruvati.com)



## 4 EASY LOCK

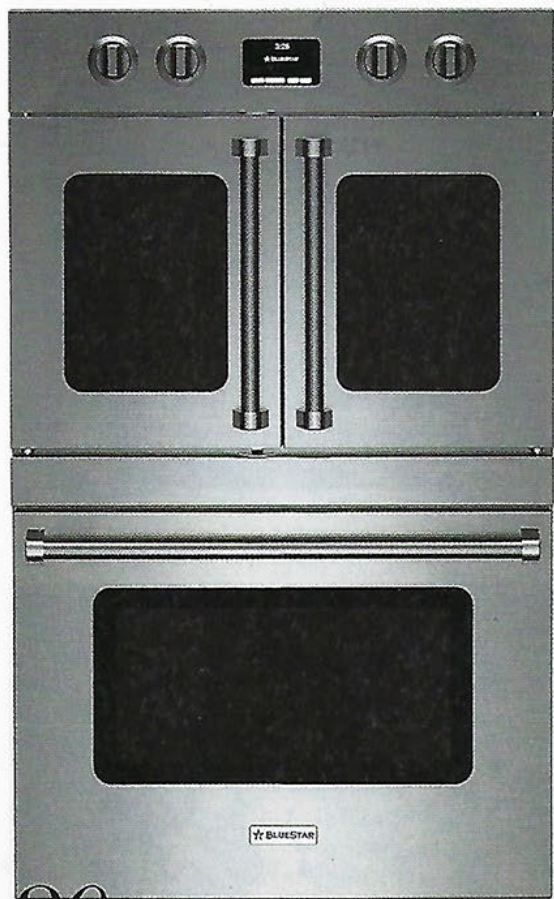
Preserve privacy as well as your barn-style door's beauty with this elegant lock. Unlike a typical deadbolt, the thumb turn installs into the jamb. Roll the door shut, turn the bolt, and you're good to go. Privacy Barn Door Lock (\$88–\$98). Inox; [inoxproducts.com](http://inoxproducts.com)



# 19

## GOLD STAR

Engineered to augment striking aesthetics with LED illumination, this 27-inch pendant features acrylic edge-lit panels wrapped around bold swoops of metal. Iridium Pendant (\$2,160). Blackjack Lighting; [blackjacklighting.com](http://blackjacklighting.com)



# 20

## PRECISION COOKING

Create restaurant-quality results at home with a 30-inch double electric oven that boasts a built-in temperature-controlled baking stone, a 2,500-watt bake element, and a 5,000-watt infrared broiler. Choose from over 750 colors. Double Electric Wall Oven with French & Drop Down Doors (starting at \$7,299). BlueStar; [bluestarcooking.com](http://bluestarcooking.com)



# 21

## 21 DURABLE BLEND

Both strong and stylish, this apron-front sink is made from a unique blend of natural quartz and acrylic resins reinforced with organic fibers that boost impact resistance. Quartz Luxe Single-Bowl Farmhouse Sink with Perfect Drain (\$1,395). Elkay Manufacturing; [elkay.com/quartz-luxe](http://elkay.com/quartz-luxe)



# 22

## 22 SPACE- SAVING STYLE

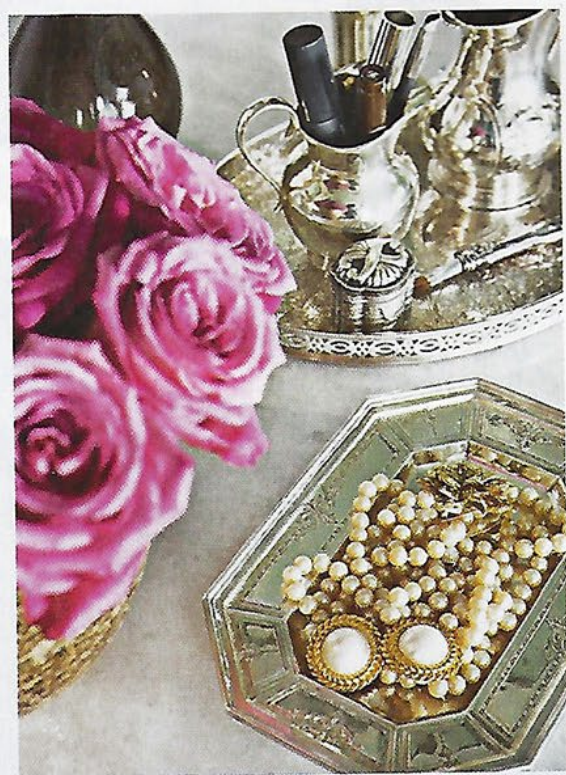
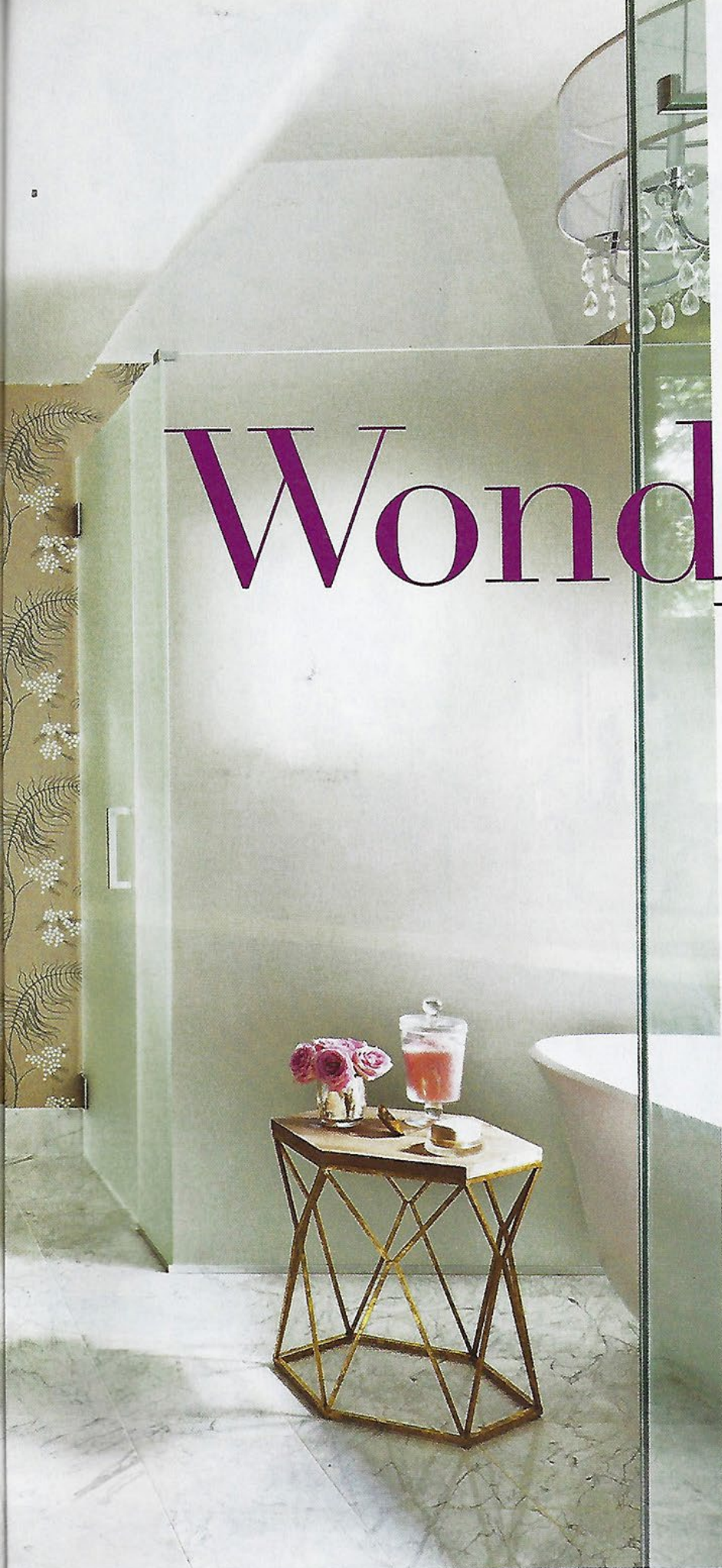
From most angles, the curvaceous Eldon looks freestanding. But the sculptural tub's efficient design with built-in shelf nestles up to the wall, making the most of small spaces. Eldon tub (\$5,600). Victoria + Albert; [vandabaths.com](http://vandabaths.com)

THIS PHOTO: Designer David Waguespack gutted the existing master bath and created an airy, clean-lined space that goes all-in with a large-scale wallpaper. OPPOSITE: The bath's feminine details are reiterated with fresh roses and silver trays.



*Chic wallpaper and a pair of glass enclosures come together in a jewel box of a master bath.*

# Wonder Wall



WRITER *Caroline McKenzie*  
PHOTOS *Gordon Beall*  
FIELD EDITOR *Eileen Deymier*



**FAR LEFT:** Carrara marble was a must for homeowner Caroline Davis. She worked with Waguespack to select a 12×12-inch tile version of the classic material for both the bathroom floor and shower walls. The honed finish gleams while lapping up the space's abundant sunlight. **LEFT:** The eye-pleasing symmetry continues in the glass-enclosed shower, where niches flank a linear arrangement of nickel fixtures. Thought out to the very last detail, the trim kit includes a thermostatic faucet to keep water at the right temperature at all times.

shapely soaking tub. “We went clean and modern on that side of the room,” Waguespack says. “The wallpaper needed some juxtaposition to keep things fresh.” Next came a smart assortment of finishes, also chosen with the wallpaper in mind. “Slate-stained cabinets, gray-veined countertops, aged-brass sconces—they all echo the muted grays, browns, and whites found in the Mimosa motif,” Waguespack says. Pops of pink, by way of fresh roses and fragrant bath salts, complement the bath’s feminine aesthetic, while the double windows capitalize on natural light.

The couple now starts each day in a striking bath that’s overflowing with storage and sunlight. But for Caroline, it all comes back to that wallpaper: “It makes me incredibly happy,” she says. “Besides marrying my husband, it might be the best decision I’ve ever made.”

*Resources begin on page 124.*

## DESIGNER INSIGHTS: CUSTOM CABINETRY

Project developer David Waguespack shares his best tips for crafting statement-making bathroom cabinetry.

- *Bid adieu to all-white.* Creamy cabinetry is well and good, but darker hues offer maximum drama. (They’re also more forgiving of wear and tear.) In a large bathroom, you can count on them to visually anchor the space in a way light-coated cabinets would not.
- *Opt for maple.* In contrast to the more common oak and pine, maple has less grain and fewer knots. As a result, it’s better suited to darker stains, resulting in more even coloration.
- *Go with gray undertones.* For a dark stain that’s rich but not overbearing, select one with hints of gray. The hue will provide a moody ambience without the cabinetry feeling too heavy.
- *Contrast with marble.* Whether you go with classic Carrara or a more exotic variety, cool-tone marble countertops are the ideal foil for dusky cabinetry.

THIS PHOTO: Caroline tested dozens of tubs (she wasn't above hopping in while visiting showrooms) until she settled on this deep, relaxation-inducing model by Victoria & Albert. "I knew I didn't want anything that looked antique," she says. "And it also had to be truly comfortable. This one just hugs you."





THIS PHOTO: Multiple storage drawers in dark-stained walnut cabinetry ensure the vanity both works hard and looks good. OPPOSITE: The existing crystal chandelier was replaced with a simpler, less fussy fixture that doesn't compete with the distinctive trim around the ceiling opening. Painted trim matches woodwork used throughout the house.



*Badly damaged by a broken water pipe, an overstyled master bath gets a redesign that trades clutter for calm.*



# Lucky Break

WRITER *Mervyn Kaufman*  
PHOTOS *Jeff Herr*  
FIELD EDITOR *Lisa Mowry*

THIS PHOTO: The new freestanding acrylic soaking tub is more efficient and less bulky than its built-in predecessor. OPPOSITE TOP: Polished nickel tub fixtures include a pullout hand shower for bathing convenience. OPPOSITE MIDDLE: Tile that climbs to the ceiling and a built-in bench make the two-person shower an elegant, comfortable enclosure. The wall-mount showerhead, one of two, is augmented by a versatile handheld shower, plus six body sprays. Niches in one wall provide space for shower necessities. OPPOSITE BOTTOM: The square shape and polished chrome finish of the showerhead help create a contemporary look.



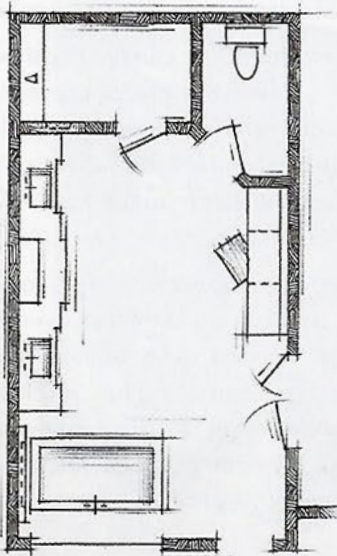
**SOMETIMES A CATASTROPHE** is also an opportunity. When a pipe burst on the third floor of their 10-year-old home in Atlanta, sending water gushing all the way to the basement, Barb and Perry Moss saw a silver lining: The damage gave impetus to the renovation they had been considering. And special attention was in order for the ornate, traditional master bath, which had needed work even before the deluge. “I tend to be more transitional, so the style was a little heavy,” Barb says.

The couple hired designer JoAnne Roder of JSR Design Inc. to reimagine the space, and David and Laurel Mullikin of Infinite Home, a design-build firm in nearby Suwanee, to manage the repairs and reconstruction.

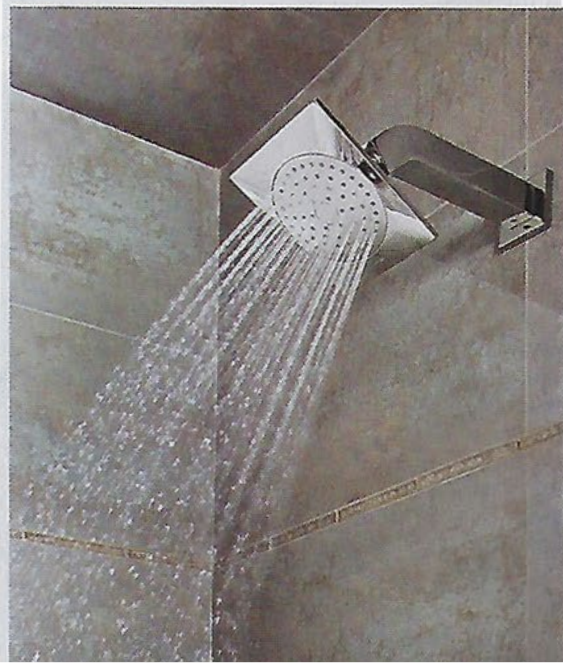
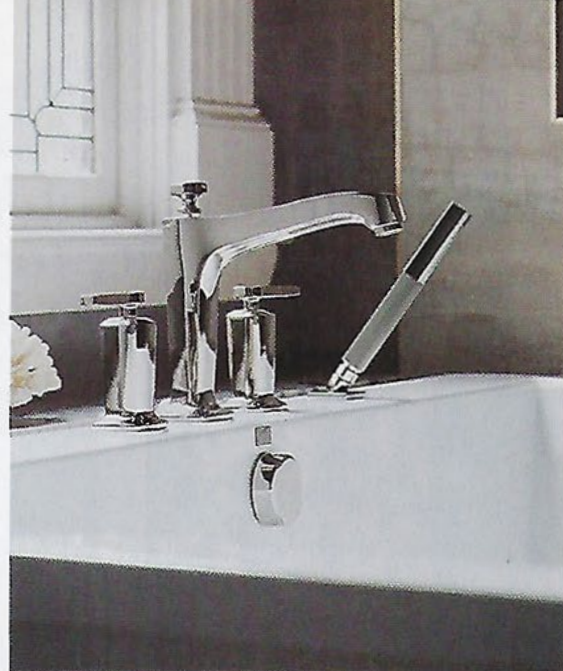
David Mullikin recalls that the water damage to the bath was substantial, a point in favor of a total overhaul: “Since we’d have had to rip out half of it anyway, a decision was made to rip it all out and make it all new. We didn’t alter the footprint or the location of most elements, but the end result was a dramatic change from what had been there.”

Roder then set to work guiding Barb and Perry through the selection of materials. “Barb fell in love with the tile—that was the first thing we picked out,” she says. “Everything we did was built around that.” Large-format tiles in a matte gray finish similar to concrete make a statement both on the walls and on

## *the plan*



Although the bath's original footprint remained unchanged, smart updates—like replacing the bulky corner tub with a sleek freestanding version—create the illusion of more space. A separate dressing table gives homeowner Barb Moss space for grooming away from the primary bathing and showering areas.



Lumens; 877/445-4486; [lumens.com](http://lumens.com).

**Faceted glass jars**—Restoration Hardware; 800/910-9836; [restorationhardware.com](http://restorationhardware.com).



### NATURAL RHYTHM

Pages 102-105

**Residential design:** Paul Moon, Paul Moon Design, Seattle, 206/985-9420; [paulmoondesign.com](http://paulmoondesign.com).

**Cabinet hardware** Bar Cabinet Pull in stainless steel P01013—Liberty Hardware; [libertyhardware.com](http://libertyhardware.com). **Sink faucet** Sutton in satin nickel—Restoration Hardware; 800/910-9836; [restorationhardware.com](http://restorationhardware.com). **Tub faucet** Fast Linear 30997—Newport Brass; [newportbrass.com](http://newportbrass.com). **Tub**—BainUltra; 800/463-2187; [bainultra.com](http://bainultra.com). **Tub deck and vanity countertops** Quartz BQ200H Super White polished—Pental Surfaces; [pentalonline.com](http://pentalonline.com). **Flooring** Vault in Carbon—Ann Sacks; 800/278-8453; [annsacks.com](http://annsacks.com). **Wall tile** Classic Jade Porcelain and New Seafoam—Heath Ceramics; [heathceramics.com](http://heathceramics.com).



### TIME OUT

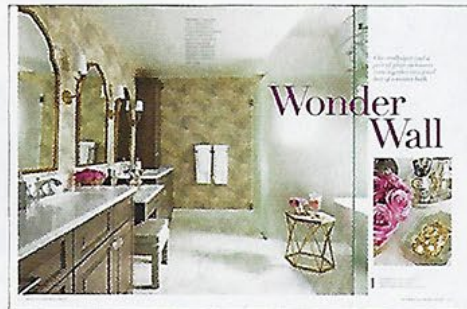
Pages 106-111

**Bath design:** Denise Hauser, Denise Hauser Design, Oak Park, Illinois; 708/774-2995; [denisehauserdesign.com](http://denisehauserdesign.com).

**Construction:** Matt Dill, Summit Signature Homes, Burr Ridge, Illinois; 630/366-2011; [summitsignaturehomes.com](http://summitsignaturehomes.com).

**Cabinetry**—Dura Supreme Cabinetry;

[durasupremecabinetry.com](http://durasupremecabinetry.com). **Cabinet hardware**—Richelieu; [richelieu.com](http://richelieu.com). **Countertop and built-in bench top** Fairy White—Marble and Granite Depot; [mygranite.com](http://mygranite.com). **Mirror**—Restoration Hardware; 800/910-9836; [restorationhardware.com](http://restorationhardware.com). **Tub** Escal Freestanding Tub, **fixtures** from the Purist collection, **sink, sink fixtures**—Kohler Co.; 800/456-4537; [us.kohler.com](http://us.kohler.com). **Stone flooring** Carrara marble—DeSitter Flooring; [desitter.com](http://desitter.com). **Inset tile** from the Eternity collection—Akdo; [akdo.com](http://akdo.com). **Drapery and shade**—through Savvy Interior Design; [savvyinteriordesign.com](http://savvyinteriordesign.com). **Side table** Nate Berkus—Target Stores; 800/800-8800; [target.com](http://target.com). **Wall paint** Storm—Benjamin Moore; 855/724-6802; [benjaminmoore.com](http://benjaminmoore.com) [P]. **Chandelier**—Shades of Light; [shadesoflight.com](http://shadesoflight.com). **Sconces**—Robert Abbey; [robertabbey.biz](http://robertabbey.biz).



### WONDER WALL

Pages 112-117

**Design and construction:** David Waguespack, Case Architects and Remodelers, Washington, D.C.; 202-556/2273; [casedesign.com](http://casedesign.com).

**Wallpaper** Mimosa—Cole & Son; [cole-and-son.com](http://cole-and-son.com). **Cabinetry** in Silas stain—Shiloh Cabinetry; [shilohcabinetry.com](http://shilohcabinetry.com). **Cabinet pulls** Alexander Brass cabinet handle pull, **cabinet knobs** Lido Crystal cabinet knobs—Emtek; [emtek.com](http://emtek.com). **Mirrors at vanity wall** Uttermost Kenitra Gold Arch Mirror—Bellacor; [bellacor.com](http://bellacor.com). **Chandelier** Hampton—Crystorama; [crystoramalights.com](http://crystoramalights.com). **Tub** Amiata—Victoria + Albert; [vandabaths.com](http://vandabaths.com). **Tub and shower fixtures** Matheson—Rohl; 800/777-9762; [rohlhome.com](http://rohlhome.com).



### LUCKY BREAK

Pages 118-123

**Design and construction:** Infinite Home; Suwanee, Georgia; 770/316-4260; [infinitehomellc.com](http://infinitehomellc.com).

**Cabinetry** custom—through Infinite Home; Suwanee, Georgia; 770/316-4260; [infinitehomellc.com](http://infinitehomellc.com). **Cabinet hardware**—Top Knobs; [topknobs.com](http://topknobs.com). **Countertops** Delicatus Vintage granite—Levantina; [levantina.com](http://levantina.com). **Wall sconces**—Visual Comfort; [visualcomfortlightinglights.com](http://visualcomfortlightinglights.com). **Chandelier**—Elk Lighting; [elklighting.com](http://elklighting.com). **Tub** Kahlo 4—MTI; [mtibaths.com](http://mtibaths.com). **Tub, sink and shower fixtures**—Kohler Co.; 800/456-4537; [us.kohler.com](http://us.kohler.com). **Wall tile**—Porcelanosa; [porcelanosa-usa.com](http://porcelanosa-usa.com). **Floor and accent tile**—Specialty Tile; [specialtytile.com](http://specialtytile.com).