

Beautiful KITCHENS & BATHS™

14 Designs for Elegant Living

Gorgeous
Lighting
Ideas

Get the Wow Factor:

- * Exquisite Millwork
- * Classic Marble
- * Distinctive Ceilings

Choose the Perfect Refrigerator p.14

SPRING 2015
Display until April 21

\$7.99 U.S.



BHG.com/KitchenBath

bhg 317 Orange Checkout

Precious Metals

Gold, silver, and bronze are hot commodities. Trade up to these metallic marvels, and get your shine on!



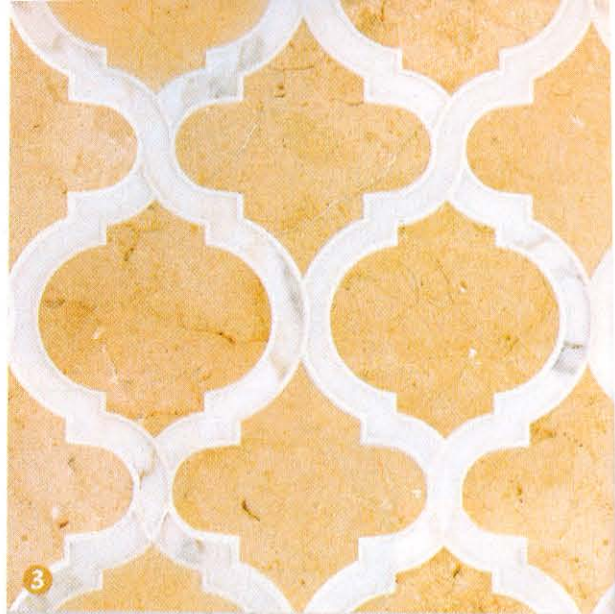
1. Gearlike circles transform this light fixture into an avant-garde work of art. Continuum Four-Light Semi-Flush in Polished Cast Brass (\$1,988). Corbett Lighting; corbettlighting.com



2. Pull off a fashion-forward update—the sleek lines of this cabinet hardware capture the essence of cool. IT Collection in Vintage Brass (\$8–\$25). Atlas Homewares; atlashomewares.com

3. Medallions of Crema Marfil limestone set in Calacatta Gold marble form a stunning surface. Toledo Classique Polished Waterjet Mosaic (\$110 per square foot). Artistic Tile; artistictile.com

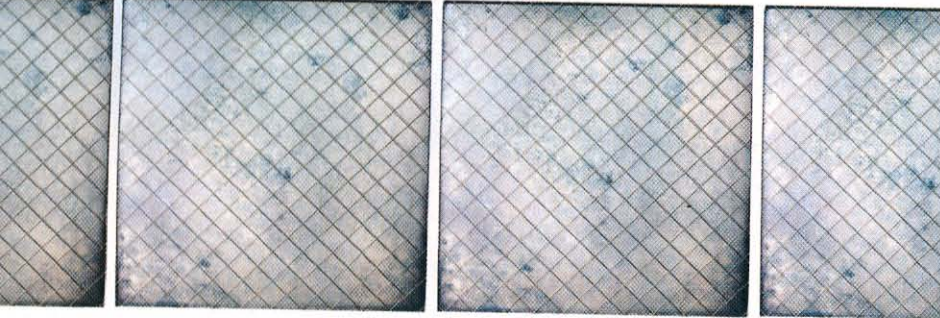
4. Sophistication and storage merge in this intricate gold-and-black Italian-made vanity. Hermitage H10 in Gold Leaf, starting at \$6,454 (\$10,556 as shown). Nella Vetrina; nellavetrina.com



WHAT'S BEAUTIFUL

Silver

1



3



2

1. Eighteenth-century mirror-making techniques produce a perfectly imperfect hand-silvered finish. Versailles Mesh Tiles in Silver Flake Rustic (starting at \$114 per square foot). Ann Sacks; annsacks.com

2. Take a seat—this industrial-chic swivel stool looks great pulled up to an island or bar. McCoy Adjustable Barstool in White (\$249). Pottery Barn; potterybarn.com

3. Move over, levers. Round handles and a sleek spout create an eye-catching tap. Collection "O" Widespread Faucet in Polished Chrome (starting at \$1,899). THG-Paris; thgusa.com

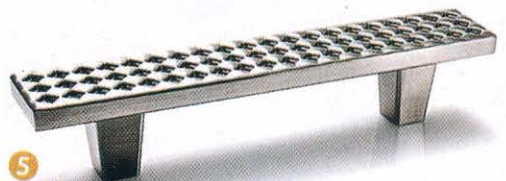
4. Define a dining or powder room with a glittering Mylar-print wallcovering. Candice Olson Shimmering Details Velocity Wallpaper in Silver on White (\$90 per roll). York Wallcoverings; yorkwall.com

5. Playful pulls sparkle with textural diamond checks. 5¾-inch Argyle pull in Satin Nickel (\$32). Du Verre Hardware Co.; duverre.com

6. Bring on the entertaining. Stacked wall ovens heat several dishes at once, and look good doing it. Vario 400 Series Double Oven (\$8,599). Gaggenau; gaggenau.com



4



5



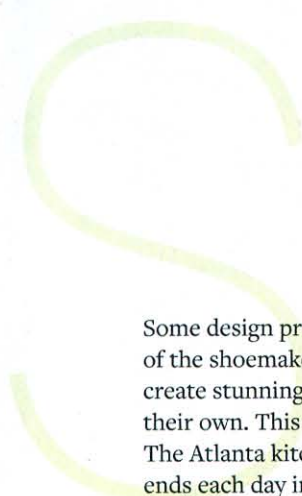
A sculptural tub made of engineered stone sits in a glass "conservatory" overlooking midtown Atlanta. Silver-vein travertine and cabinetry in earthy colors contrast with the tub's steel-gray finish.

Higher Learning

A designer's master bath boasts a trifecta of good karma: Amazing views, state-of-the-art materials, and creative execution.

WRITER AND FIELD EDITOR LISA MOWRY | PHOTOS EMILY J. FOLLOWILL





Some design professionals say they live the parable of the shoemaker's children going barefoot—they create stunning interiors for others' homes, but not their own. This is not the case with Matthew Quinn. The Atlanta kitchen and bath designer begins and ends each day in this master bath in his 22nd-floor penthouse. With its luxe ambience and exquisite city views, the bath is the ideal getaway for Matthew and his partner, Ric Parrish, who spend a lot of time there when they're not busy as president and vice president, respectively, of Design Galleria Kitchens & Baths, one of the city's busiest showrooms.

In the past few years, Matthew has branched out into other areas of the kitchen and bath industry to complement his design work. The Matthew Quinn Collection offers high-end cabinetry hardware, architectural elements, range hoods, and boutique tubs. Matthew explains how all of his areas of interest come together in this one room:

What was the starting point for your master bath? And how did you come up with the idea of a tub on an elevated deck surrounded by windows?

MATTHEW QUINN: Ric and I were visiting the building with a friend who was interested in moving, and we flipped out over the views. Luckily, the space was only framed, so we were able to remove every wall and start over. My new sink and tub collection for MTI Baths was set to launch a few months after we purchased the place, so I knew I wanted my Intarcia tub to be front and center in more ways than one. We were able to build this glass conservatory for the bathtub, which gives us the feeling of bathing outside.

What were your must-have features for the bath?

MATTHEW QUINN: We knew we wanted a large steam shower with a long bench and multiple showerheads. Radiant-heat flooring was an absolute must—so much so, in fact, that we installed the radiant heat flooring throughout the entire penthouse. We also wanted an enclosed water closet, two sinks, lots of storage, flexible lighting, and a dash of glamour.

Tell us about the mix of materials. What inspired your selections?

MATTHEW QUINN: The color scheme for the entire home started from a multicolor stone we used for the kitchen countertops. From that, we selected this 24×48-inch anthracite porcelain tile for the flooring throughout the entire home. I have always loved silver-vein travertine for its dramatic veining and color variation and felt like it complemented the color scheme and flooring well, so I chose that for the shower and steps. My designs tend to be axis-focused, so accentuating those lines by installing “stripes” of materials increases the drama.

That tub is the Lamborghini of bathtubs. How did you get into the business of designing tubs, and what makes this particular one special?

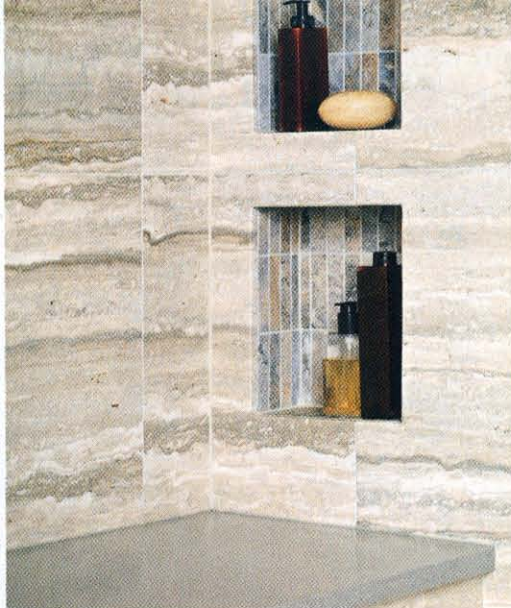
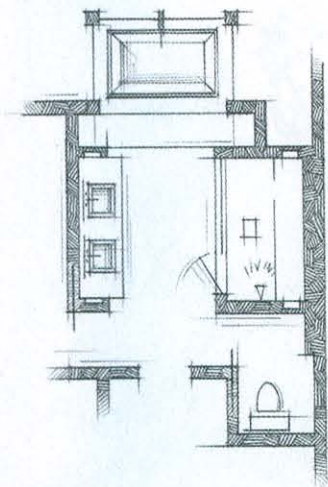
MATTHEW QUINN: During my career, I have always designed individualized kitchen and bath products for clients. I love factory tours and the manufacturing process, so I always start there before putting pen to paper. MTI Baths products are made just a few miles north of Atlanta, so it was the perfect match for my first foray into mass-marketed product design. I like the Lamborghini reference, but I actually consider this tub design more of a yacht than a car. Growing up around boats in Key West definitely influenced the lines of this Intarcia tub. The best feature, however, is its comfort.

What style and storage secrets can readers learn from this space?

MATTHEW QUINN: Adding little details that save time or make an experience more enjoyable is the real luxury we can provide. We use the tall, mirrored medicine cabinets at each side of the vanity for everyday lotions, potions, and anything that needs to be charged, as there is an outlet inside. Organizing my clients' spaces all day has definitely made me more “OCD.” I find peace when I open my vanity drawers with custom plexiglass inserts and see individual compartments for dental floss, ChapStick, scissors, nail clippers, cotton balls, etc. That's the best \$200 we spent in this bath.

RESOURCES BEGIN ON PAGE 122.

Opposite: Engineered-stone vessel sinks that echo the tub's lines make a statement atop quartz-surfacing countertops. The vanity drawers have a high-gloss lacquer finish that complements the wood cabinet doors.



DESIGNER INSIGHTS Focal-Point Tubs

Designer Matthew Quinn knows a thing or two about making a tub stand out in a bathroom—his sits in a glass conservatory. Here, he shares strategies for giving your tub pride of place.

- **Site it front and center.** You can't miss a centrally placed freestanding tub. Anchor the tub with a sparkling chandelier above and a tiled "rug" around it.
- **Put it on a pedestal—literally.** A platform not only elevates your tub to wow-worthy status; the extra height also improves your views from the tub. But play it safe: Be sure the riser is wide and is made of a nonslip material.
- **Set it off.** Nestling your tub in front of a large window or windowed bay gives it instant focal-point prominence. So does tucking it in a recessed alcove.

Opposite: A frameless glass enclosure puts the shower's exquisite tilework and modern fixtures on display. **Top right:** The floor tile repeats in a pair of niches that provide convenient storage for soaps and shampoos. **Top, far right:** Travertine steps create a stage for the tub. Homeowner and designer Matthew Quinn used the same stone in two formats for dramatic effect. **Above:** The tub's chrome filler matches other metallic finishes in the room. **Above right:** Linen curtains around the tub help soften the abundance of hard surfaces. A rooftop deck beyond the windows includes wind-tolerant plants and areas for entertaining. **Right:** Matthew designed the cabinetry hardware as a nod to the room's decidedly modern look and feel. Inside the drawers, plexiglass inserts keep small items organized. **Far right:** A narrow hallway leads to a separate toilet compartment. Textured walls add contemporary flair.



This photo: A broad stripe of patterned marble tile behind and beneath the soaking tub unifies bath elements and creates a pleasing waterfall-like effect. **Opposite:** "We loved that the chandelier looks like silver bracelets," interior designer Leigh Nunnery says.





Gracefully Adapted

Function and beauty
comfortably coexist in
a sophisticated bath
designed just for her.

WRITER AND FIELD EDITOR LISA MOWRY
PHOTOS ANTHONY-MASTERTSON



The layout of Sally and Ted Green's Atlanta home gives each of them a private bath, allowing for personalized designs that reflect each owner's style and needs. "My bathroom is certainly more feminine than his, and it gets a lot of bright light," Sally says. "But our house is 17 years old, so it was time for mine to get a remodel." Her challenge to bathroom designer Mary Kathryn Timoney: Make the space look dramatically different without moving any of the plumbing.

Timoney started by centering the bath's large picture window and adding a decorative transom to make the room seem more balanced. She also removed a dated tray ceiling and a sunken tub. She and interior designer Leigh Nunnery added sophistication to the room with a new custom vanity and a clean-lined tub. Decorative tile with a sinuous pattern ties everything together.

"We created a centerline with the mosaic tile," Timoney says. "It follows the back of the tub wall, the floor, and the vanity wall, with the tub and vanity centered on this stripe." To reinforce the feminine nature of the room, the designers also chose an elegant chandelier and added sheer drapery panels, both with patterns similar to the curves in the tile.

Functional choices are equally stylish—such as the sliding door of aqua-color glass that serves both the shower and the toilet compartment. "Since this bath is for one person, there is never a time that someone will be in the shower and the water closet at the same time, so Sally didn't need a door for each," Timoney says. "The glass door glides beautifully and eliminates the need for unsightly case openings."

The sliding door and the curbless shower provide another benefit, since Sally recently had to move to a wheelchair due to Parkinson's disease. "The bathroom isn't ADA-specific, but it functions well for a wheelchair," the homeowner says.

Sally's vision started with a clean slate, and the finished space is everything she wanted and more. "The decorative tile and sliding door are probably my two favorite things," she says. "But I love this bathroom more every day in many ways."

RESOURCES BEGIN ON PAGE 122.

Opposite: The dresserlike vanity and adjacent linen closet support the room's feminine vibe. Lucite knobs on the vanity drawers add a touch of glamour. **Above left:** The tub filler's gentle curve complements the shapely wall and floor tile. **Above:** Stainless-steel shelves behind the tub are equally functional and stylish.



HIGHER LEARNING

PAGES 104–109

Bath design: Matthew Quinn, Design Galleria Kitchen & Bath Studio, 351 Peachtree Hills Ave., Suite 234, Atlanta, GA 30305; 404/261-0111; designgalleria.net.

Cabinetry with custom color lacquer—Downsview Kitchens; 905/677-9354; downsviewkitchens.com.

Tub and sink basin Intarcia in Raven from the Matthew Quinn collection—MTI Baths; mtibaths.com.

Vanity top Pebble, honed—CaesarStone US; 877/978-2789; caesarstoneus.com.

Tub and sink basin faucets, other accessories from the Matthew Quinn collection—The Rubinet Faucet Co.; 800/461-5901; rubinet.com.

Shower door glass—Smyrna Custom Glass and Mirror, Smyrna, Georgia; 770/436-4342. **Tile—**Renaissance Tile & Bath, Inc.; 800/275-1822; renaissancetileandbath.com.

Sconces—George Kovacs Lighting, a division of the Minka Group; 800/221-7977; minkagroup.net.



GRACEFULLY ADAPTED

PAGES 110–115

Bath designer: Mary Kathryn Timoney, Design Galleria Kitchen & Bath Studio, 351 Peachtree Hills Ave., Suite 234, Atlanta, GA 30305; 404/261-0111; designgalleria.net.

Interior designer: Leigh Nunnery, John Kilmer Fine Interiors, 890 William Hilton Pkwy., Suite 41, Hilton Head Island, SC 29928; 843/785-2227; johnkilmer.com.

Contractor: Tom Williams Residential, Inc., 227 Sandy Springs Place, Suite D, Atlanta, GA 30328; 404/869-0333; tom@tomwilliamsresidential.com; tomwilliamsresidential.com.

Cabinetry—Downsview Kitchens; 905/677-9354; downsviewkitchens.com. **Cabinet hardware—**Matthew Quinn collection, Atlanta; 404/974-3560; matthewquinncollection.com.

Tub—BainUltra; 800/463-2187; bainultra.com.

Floor and wall tile, sink and shower fixtures—Renaissance Tile & Bath, Inc.; 800/275-1822; renaissancetileandbath.com.

Sink faucet Empire Royal—Joerger; joerger.de. **Mirror—**Robern, Inc.; 800/877-2376; robern.com. **Shower door** Kinetic—Advanced Glass Designs, Roswell, Georgia; 770/475-8433; advglassdesigns.com.

Chandelier—Masterpiece Lighting and Architectural Hardware, Atlanta; 404/897-9977; masterpiecelighting.com. **Drapery panels—**Ravan, Inc., Atlanta; 404/231-3929; ravaninc.com.



LOW COUNTRY LUXE

PAGES 116–121

Architect: Christopher Rose, AIA, ASID Christopher Rose Architects, P.A., 3059 Meeks Farm Rd., Johns Island, SC 29455877/559-7670; christopherrosearchitects.com.

Cabinetry, cabinet hardware polished nickel—Strimpfel Cabinets & Remodeling, LLC, North Charleston, South Carolina; 843/364-1581; kscabinets.com. **Wall paint** Cream 44—Farrow & Ball; 888/511-1121; farrow-ball.com.

Flooring, wall, and shower tile Jerusalem Gold travertine, **tile wall border** Honey Onyx and Jerusalem Gold basket weave, **backsplash tile** Honey Onyx in herringbone pattern with pencil tile in Jerusalem Gold—contact local cut stone retailers. **Sinks—**Toto USA, Inc.; 800/350-8686; totousa.com. **Tub—**Kohler Co.; 800/456-4537; us.kohler.com. **Sink and tub faucets—**Rohl; 800/777-9762; rohlhome.com. **Sconces—**Visual Comfort & Co.; 866/344-3875; visualcomfortlightinglights.com.

Mullioned oval windows—Loewen Windows; 800/563-9367; loewen.com. **Mirror over sink vanity** custom design—Christopher Rose Architects, P.A., Johns Island, South Carolina; 877/559-7670; christopherrosearchitects.com.

Lead fasteners for window custom—Justin Walling, Charleston Architectural Glass Studio, Inc., Charleston, South Carolina; 843/452-0427; houzz.com, search: Charleston Architectural Glass Studio, Inc. **Shower wall and door** polished tempered glass created with Hydroshield, **shower hardware—**Palmetto Glass, Charleston, South Carolina; 843/556-0314. **Plantation shutters—**Window Master, Charleston, South Carolina; 843/552-1146.