

Better Homes and Gardens Special Interest Publications

Beautiful KITCHENS & Baths™

Celebrate Style

19 Rooms That Impress

Winter 2012
Display until February 5

\$7.99 U.S.



BHG.com/KitchenBath

**Add Warmth to a
White Kitchen** p. 36

**Ultimate Luxury:
Master Baths That Have It All**

BHG SIP Red Checkout

Cool, Calm, and Collected

Timeless elements and cool colors bring understated elegance to your kitchen and bath.



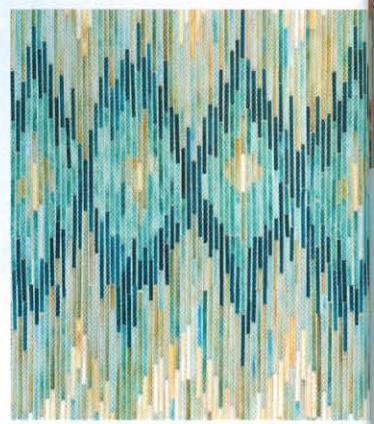
Give your kitchen the timeless appeal of a chef's domain with this classically inspired pot rack. The dual-duty fixture comes with two lights, six swiveling plain hooks, six hooks with laser-cut porcelain-enamel numbers, and a hang-straight ceiling canopy. We love the fact that you can order this pot rack in hundreds of powder-coated colors and custom finishes. Pot rack in satin nickel (\$13,580; plain hooks in satin nickel, \$345 each; hooks with numbers, \$470 each). Urban Archaeology; 212/431-4646; urbanarchaeology.com



1



2



4

1. Tile isn't the only surface that can transform the walls of a master bath. Wallpaper, too, can add beauty and character. This modern botanical toile's subtle washes of color overlay finely etched lines—which give it the look of hand-tinted engraving—and add immeasurable beauty to your bath. Belle Grove wallpaper in blue (available to the trade). Cowtan & Tout; 212/647-6900; cowtan.com

generously appointed master bath. Paired with a floor-mount tub filler, this unique fixture is sure to draw many admirers. Cabrits tub (\$5,900). Victoria + Albert; 800/421-7189; vandabaths.com

2. Illustrating designer Michael S. Smith's deft touch, the Inigo sconce is part of a collection rich in layered, intricate detail and Mediterranean style. Why not let its geometric sparkle bring a little light into your personal spa? Inigo sconce in nickel silver (\$1,829). Kallista; 888/452-5547; kallista.com

4. Every collection of New Ravenna mosaic tiles is breathtakingly beautiful, but the newest—inspired by Central Asian ikat textiles—simply glows. It's hard to choose a favorite among its cool, luminous colors and patterns, so we've given you three amazing options to ponder. From left: mosaic tiles in Weft, a combination of quartz and pearl (\$230 per square foot); Loom, in turquoise, tanzanite, aquamarine, and quartz (\$184 per square foot); and Pamir, in quartz and mirror (\$184 per square foot). New Ravenna Mosaics; 757/442-3379; newravenna.com

3. With its sensuous shape and warm-to-the-touch volcanic limestone construction, this freestanding tub provides both an immediate focal point and a luxurious soaking spot for any

5. You wouldn't think it possible that a sink can be simultaneously flat and curvy, but one look at Toto's Neorest vessel sink proves it can be done. Low to the counter and graced with an almost imperceptible dip to its bowl, this softly



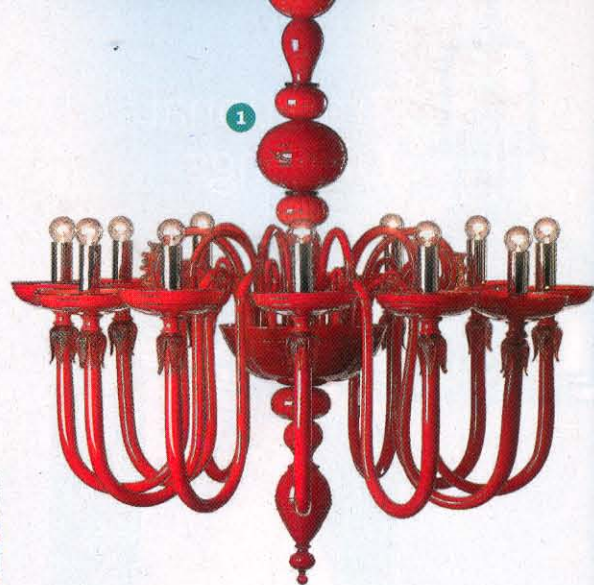
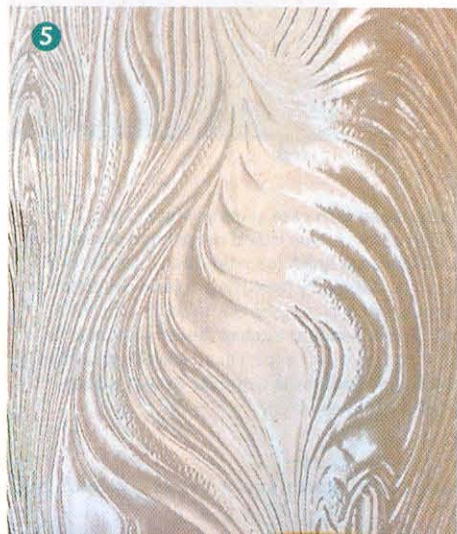
3

IT'S ALL IN THE DETAILS

BY KATHIE KULL

Dazzling Glass

At the hands of artisans, simple sand and salt fuse into shiny items of wondrous color and form.



Fall under the spell of breathtaking glass.

1. The 18th-century-style Venetian light fixture shows new sass in this blown-glass Soiree collection chandelier—still made by Italian masters. Shown with 12 arms spanning 39 inches, it also comes in six- and eight-arm models, each with jazzy round bulbs. Up Close & P. 4431 (from \$11,000). *Andromedamerica*; 305/535-8850; andromedamerano.it

2. Handblown by Italian artisans, this art-glass pendant features amber and opal granules (known as frit), layered in speckles of glamorous gold. The Artisan collection pendant comes with an 11½-inch-tall shade, a socket set, a xenon bulb, and an adapter that makes it compatible with track-and-rail systems. Hardware finishes include gold (shown), brushed nickel, and dark bronze. Rococo pendant (\$367). *WAC Lighting*; 800/526-2588; waclighting.com

3. Perfect in any setting, these breathtaking eco-chic countertops are made from 100-percent-recyclable glass. Make your translucent glass countertop unique by choosing infused colors and imbedded textures that range from a soft crackling to a wavelike pattern resembling the sea. Note: These thick countertops are as strong as stone and also stainproof. Glass countertop (\$200–\$400 per square foot). *ThinkGlass*; 877/410-4527; thinkglass.com

4. An inlay technique from 17th-century India inspired this mosaic of jewel glass and natural stone handmade in Virginia. One of four delicate organic designs, this tile pattern represents growth and renewal—perfect for a spa-like bathroom that helps you rejuvenate after a busy day. Design your own vinescape from 50 luminous glass colors. Climbing Vine jewel glass mosaic in Aquamarine leaves and Quartz vines (\$196 per square foot). *New Ravenna Mosaics*; 757/442-3379; newravenna.com

5. Give cabinets an artistic personality by adding any of 120 textured patterns of clear glass or nine types of antiqued mirror to the doors. Depending on the design (shown in Taffeta AGE 149), this specialty glass can highlight or obscure cabinet contents without detracting from other features. Custom-cut glass (call for pricing and distributors). *Architectural Glass Effects*; 888/772-5282; arcglassseffects.com

6. Bursting with swirls of color, these luminous glass knobs give a dressing table or bath vanity touchable glamour. Available in three designs in round and square shapes, each knob bears a stem in polished chrome or oil-rubbed bronze. Galaxy knob (\$22 each) of the Dream Glass collection. *Atlas Homewares*; 800/799-6755; atlashomewares.com

BEAUTIFUL KITCHENS & BATHS
features
WINTER 2012



Create a showplace that will not only impress your guests but inspire you every day. Refreshing expanses of marble and shimmering tile turn a utilitarian master bath into an indulgent retreat. Soaring architectural beamed ceilings and cabinetry dressed in handcrafted details encourage lingering in the kitchen. Turn the page to find the style that speaks to you.



Layer it *Luxurious*

Vancouver designer Tereza Bajan shares her insights for an indulgent master bathroom with architectural substance.

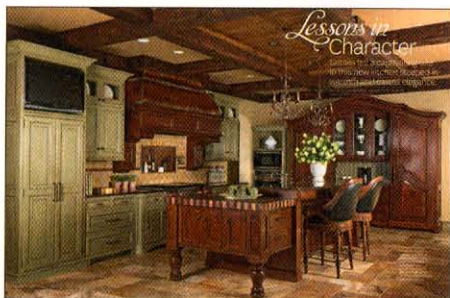
BY ANN WILSON | PHOTOS JOHN GRANEN
FIELD EDITOR LINDA HUMPHREY



Opposite: Refined accessories, such as this sculptural chandelier, enhance the room's cultured character. **This photo:** Marble floor tiles set in a basket-weave pattern bring a sense of movement that attracts and carries the eye. Drapery panels pick up on the floor's silvery gray tones.

The perfectly proportioned slipper tub presents a scintillating silhouette that's far less bulky than a tub encased in a surround. The tub's shape inspired the arched mirror framed by paneled millwork that adds architectural interest to an underused wall.





LESSONS IN CHARACTER
PAGES 84-89

Designer-builder: Rick & Amy Hendel, Hendel Homes, 15250 Wayzata Blvd., Suite 108, Wayzata, Minnesota; 952/404-7204; hendelhomes.com.

Interior designer: Annie Troppie, Home Design by Annie, 275 Market St., Suite 451, Minneapolis, MN 55405; 612/382-9366; homedesignbyannie.com

Cooktop, wall oven, microwave oven—Wolf Appliance, Inc.; 800/332-9513; wolfappliance.com. **Reclaimed timbers**—contact local lumber retailers.

Faucet at island—Blanco America, Inc.; 800/451-5782; blancoamerica.com. **Pot filler**—Rohl; 800/777-9762; rohlhome.com. **Refrigerator-freezer integrated with cabinets**—Thermador; 800/735-4328; thermador.com. **Dishwasher integrated with cabinets**—Asko Appliances; 800/367-2444; askousa.com.

Coffeemaker—Brew Express; 866/268-5953; brewexpress.com. **Cabinets custom**—Wood Works, Minneapolis; 612/522-9500; woodworkscabinetry.com.

Hardware—Nob Hill Decorative Hardware; 763/225-8794; nobhillhardware.com.

Countertop Capolavoro with ogee edging—contact local cut-stone retailers.

Tile for backsplash Tuscany Dorado with Petiole copper liner—Walker Zanger; 877/611-0199; walkerzanger.com.

Flooring Scabos large Versailles pattern brushed, unfilled, chiseled travertine—The Tile Shop; tileshop.com.



LAYER IT LUXURIOUS
PAGES 90-95

Architect: Charles Fawkes, Charles Fawkes Designs, Vancouver; 604/727-1566; e-mail: cfawkes@telus.net.

Interior designer: Tereza Bajan, Bajan Design Group, Inc., Vancouver; 604/616-2648; bajandesigngroup.com; e-mail: tereza@bajandesigngroup.com.

Builder: Troy Van Vliet, Tavan Developments, Ltd., Vancouver; 604/263-3026; tavandevelopments.com.

Tub Amalfi slipper tub, **tub filler housing** Lido Grande—Victoria + Albert, LLC; 800/421-7189; vandabaths.com/usa. **Tub filler** upgraded with Swarovski crystal—Brizo; 877/345-2749; brizo.com. **Sinks**—Kallista; 888/452-5547; kallista.com.

Countertop Carrara marble—contact local cut-stone retailers. **Shower system**—Cifial USA; 800/528-4904; cifialusa.com.

Cabinet hardware—CMC Architectural Hardware, Vancouver; 604/874-2110.

Shower and floor tile—Julien, Inc.; 800/461-3377; julien.ca. **Drapery fabrics**—Maxwell Fabrics, Vancouver; 604/253-7744; maxwellfabrics.com.



LINEAR EQUATION
PAGES 96-101

Architects: Ronald McCormack and Don Rudat, project manager, McCormack + Ethen/Architects, LLP, 400 Broad St., Lake Geneva, WI 53147; 262/248-8391; mccormackethen.com.

Interior designer: Adele Lampert, ASID, Page One Interiors, 320 E. Main St., Barrington, IL 60010; 847/382-1001; interiorspageone.com; e-mail: adelelampert@aol.com.

Contractor: Tim Pattison, Bickerstaff Builders, Inc., North Barrington, Illinois; 312/882-0606.

Wall paint Manchester Tan—Benjamin Moore; 888/236-6667; benjaminmoore.com [P]. **Vanity** custom-designed walnut,

overhead light fixture Crescendo by Tech Lighting, **sconces at vanity** Astor by Ilex Architectural Lighting—Page One Interiors, Barrington, Illinois; 847/382-1001; interiorspageone.com. **Cabinet hardware**—Top Knobs USA, Inc.; 800/499-9095; topknobsusa.com.

Cathedral ceiling stained walnut tongue-and-groove boards—Bickerstaff Builders, Inc., North Barrington, Illinois; 312/882-0606. **Tub** ProMeridian 55—BainUltra; 800/463-2187; bainultra.com.

Tub hand shower, bath spout Deque, **vanity faucet** Mem, **shower fixtures** Mem—all in satin nickel by Dombracht USA, Inc.; 800/774-1181; dombracht.com.

Vanity sink—Toto USA, Inc.; 800/350-8686; totousa.com. **All plumbing fixtures**—through Studio 41, Highland Park, Illinois; 847/266-1900; studiofortyone.com. **Floor tile** radiant heated, **tile in shower** honed Crema Luna—Chadwick's Surfaces International, Libertyville, Illinois; 847/680-3222; chadwickssurfaces.net.

Fireplace and countertop stone slab Crema Europa—Marble Emporium, Chicago; 312/226-4462; marbleemporium.com. **Vanity mirrors**—Robern, Inc.; 800/877-2376; robern.com.