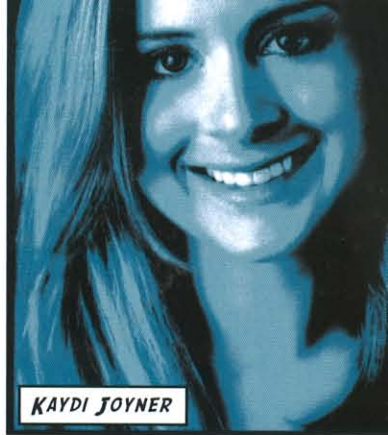


boutique™ DESIGN

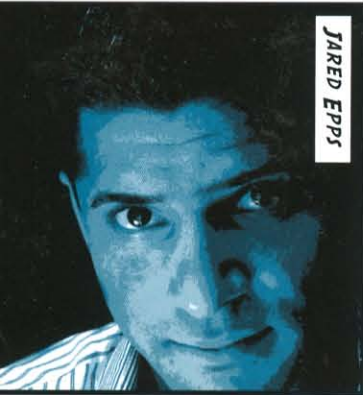
www.boutiquedesign.com



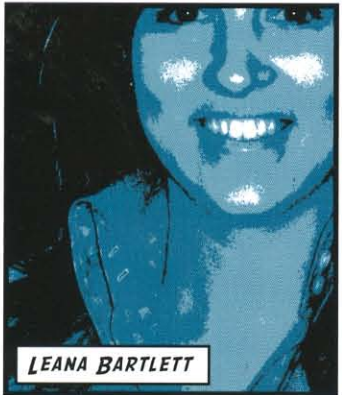
MORRIAH MRYSEUK



KAYDI JOYNER



JARED EPPS



LEANA BARTLETT



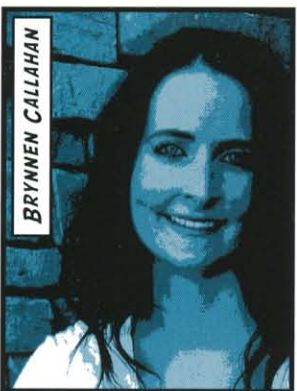
VASILIKI ZANNETTIS



JENNIFER SHALLENBERGER



HEATHER MALONEY



BRYNNE CALLAHAN



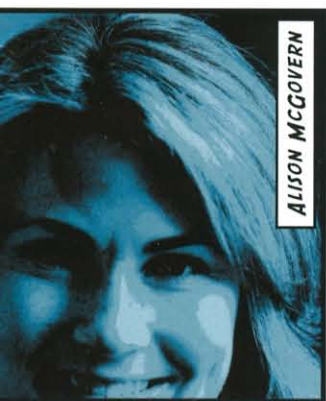
GRACE MACK



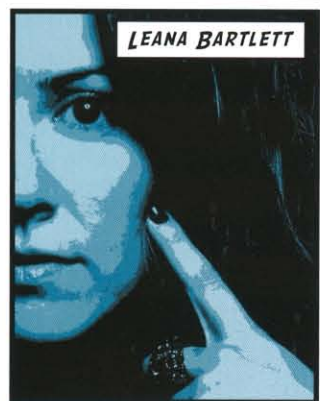
JEN MAZZIOTTA



RAY CHUANG



ALISON MCGOVERN



LEANA BARTLETT

**THE
BOUTIQUE 18
READY FOR
HOSPITALITY'S**

BOOM!



SHALEAH SOLIVEN



LEORA OH



GINO CASTANO



DANIELLE PEACOCK



KRIS PIENSCHKE



1 Watermark Designs [page 58]

The Titanium line from Brooklyn-based Watermark is available with two hydro-progressive water control options which control volume and temperature in one motion. The Volume Reduction Aerator allows the user to adjust flow rate directly at the tip of the spout. Available at www.watermark-designs.com

2 Beckwith Interiors

Crafted using ship-building techniques, this walnut tub with maple detailing is warm and cozy, with or without water. It's made with marine-grade epoxy to hold the water temperature longer, and it's

customizable to larger sizes so you can soak with company. Available at www.jamiebeckwith.com

3 Sicis North America

Yes, we too would like to slip one of these on each foot and suit up with a little black dress. [we girls, that is.] But alas, this shoe is made [in Italy] for bathing — and a most indulgent bath it makes. Available at www.sicis.it

4 Alessi

Does anyone else see that childhood blow-up whale float everyone had — or perhaps the next character to appear in Mario Kart? Whatever you see in this toilet by Alessi, you'll surely agree it looks fun and inviting. Not typical for

a toilet. Available at www.alessi.com

5 Novellini

Shy shower-ers beware: this glass pillar of modernism is not going to hide you from onlookers. The sleek styling and smooth lines of this Novellini shower are more about a design showcase, but give way to a you-showcase too, if you'd like. Available at www.novellini.com

6 Teuco

The Feel Swarovski Bathtub is a bespoke, artistically embellished tub by Fiona Winter-Grasser, heiress of the famous Austrian Swarovski family. Because why should you have to take your jewellery off while bathing? Available at www.teuco.com

Check out these star line-ups at the 2010 HD Expo in Las Vegas.

MTI WHIRLPOOLS will exhibit award-winning designs and innovative bath products at this year's HD Expo. The company's product range is extensive, with over 200 models of tubs, shower bases, frameless shower enclosures, sinks and specialty products with a full range of options and hydrotherapy choices. MTI will be showcasing their extraordinary Boutique Collection, an exclusive line of high-end, design-savvy products for the bathroom including those designed by the very talented Matthew Quinn.

Seamless Elegance in Solid-Surface. The Akana Suite consists of a one-piece engineered solid-surface tub and sink. The Akana tub is available as a soaker or air bath with optional Stereo H20® integrated audio system. A coordinating sink can be specified in varying heights and with or without a custom wall-mounted vanity for the ultimate in minimalist design.

Freestanding, Organic Design. The Elise soaking tub has a nature-inspired aura with its soft lines and seamless design. Elise, like all Boutique Collection products, is made in the USA and constructed using MTI's "ESS" (Engineered Solid-Surface) material, a mixture of ground natural minerals and binding agents that are liquefied, poured and then hardened. The result is molded stone, solid through and through. Approximately 60% of the material is organic – a green alternative.

Luxury and Sophistication in Solid-Surface. The Intarcia is one of the newer models in a line of exciting solid-surface products designed by Matthew Quinn, one of the nation's leading experts in bath design. Shown in gloss Raven with decorative inlays and optional pedestal base, Intarcia can be specified as a soaking tub or air bath. A matching Intarcia lavatory sink is also available.

SEE MTI AT HD EXPO BOOTH # BOOTH 3636
www.mtiwhirlpools.com



Akana Suite

Elise tub

Intarcia Tub



7802 Chair



7809 Chair



7803 Chair



7804 Chair

SAMUELSON FURNITURE is celebrating 75 years, and four generations, of manufacturing the highest quality furniture with the launch of their New Generation of Chairs from THE STUDIO at Samuelson Furniture. These new chairs are timeless expressions of style; classic, each sophisticated and created with a legendary history that truly defines quality furniture. Started as a father-and-son team with inspired dreams, Samuelson has grown to be powerhouse in the industry offering quality furniture to the professional design community. No matter the style, each and every piece has an inspired design and heirloom quality - a trademark of the Samuelson Furniture brand.

Chic and sophisticated, the **7802 Chair** from Samuelson Furniture features clean, flowing lines, a hand-rubbed Tarnished Silver finish and luxurious comfort.

The **7803 Chair** is inspired by the Art Nouveau period and modernist style, featuring flowing organic lines and a sophisticated yet classic style ideal for a cocktail lounge, occasional or restaurant seating.

Sculpted to perfection, the **7809 Chair** features delicate, detailed carvings which accent the otherwise contemporary form available with show wood or fully upholstered top.

The **7804 Chair** celebrates Egyptian inspired style with an Art Deco twist. Curved arms, detailed carvings and balanced geometric shapes highlight this chair, rich in character and at home in both traditional and contemporary settings.

SEE SAMUELSON FURNITURE AT HD EXPO BOOTH # BOOTH 2121
www.samuelsonfurniture.com

