

# CANADIAN HOME trends

CanadianHomeTrends.com

## *miracle* **Makeovers**

40 pages of stunning designer spaces

at home with  
**Ellen Pompeo**  
*of*  
**GREY'S anatomy**



**Sewing Table into a Mini Bar**  
*Make it Yourself*

**BIG STYLE ON A SHOESTRING**

*Marc Atiydil*

DISPLAY UNTIL  
July 18, 2012  
PM 41438018

\$5.50  
21  
SPRING 2012  
0 74470 72103 1

CHANEL  
DON McCULLIN IN AFRICA  
THE ALLURE OF WOMEN

STYLIST  
BOB RICHARDSON

# Elegance with a twist

that's warm and inviting

Text Betty Barkman | Photography Tek Yang

**T**his stunning home in Lawrence Park in the heart of Toronto was the site of an old bungalow. When Stefano and Karen Tognarelli, owners and managers of Silverpoint Fine Homes get involved in a project amazing things happen.

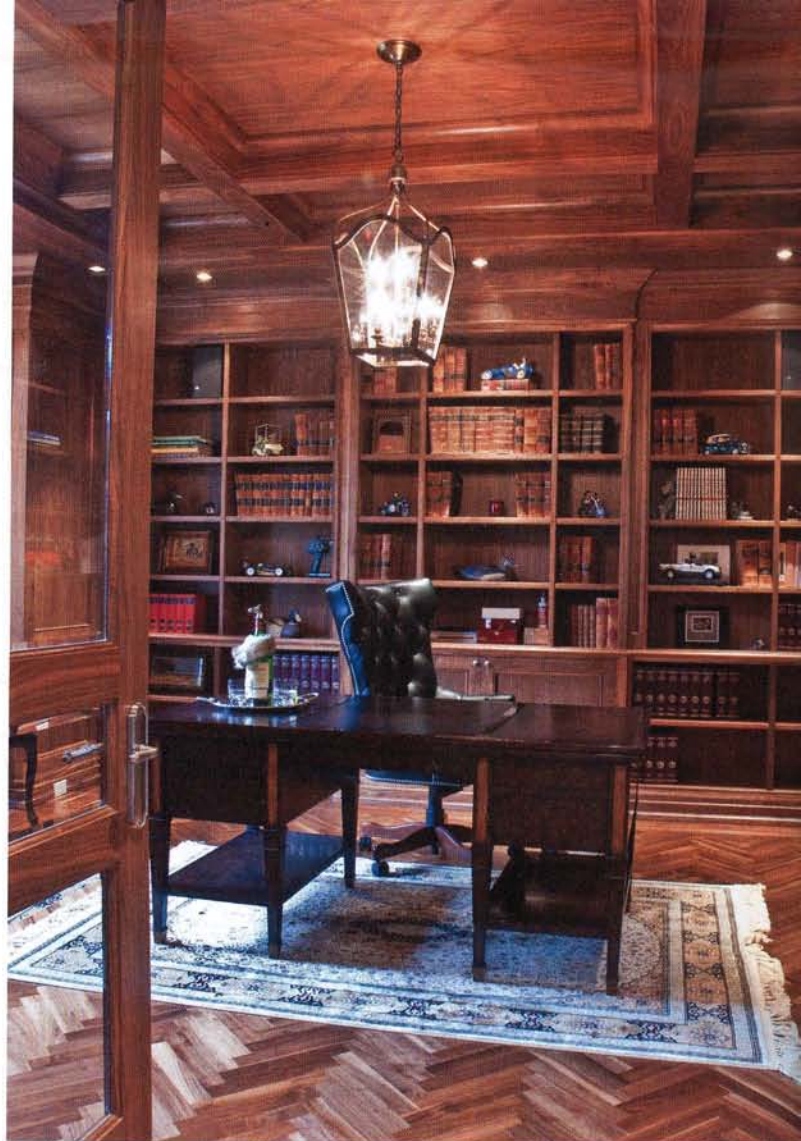
They fell in love with the footprint of the property; how it was placed on the lot. They visualized how they could keep some of the old – especially the trees and the solid foundation, yet build new. Their inspiration was double edged, maybe even triple. They needed a showcase to display their infinite and ever expanding array of ideas and capabilities. On the other hand, and this is their strongest point of inspiration no doubt, they had a vision of the place becoming timeless, a classic beauty: a place that would still feel great thirty or forty years down the road. (Mahir at ManArch came through for them with his incredible design.) Finally they needed the place to be their own; it was time, not only to be career oriented, but to be able to settle into a perfect home for themselves and their two sons, Christian, 6, and Hudson, 3.

Putting all these aspirations into one bundle, can you imagine a more powerful inspiration? Throw in fourteen months of hard work, fourteen months to execute every last detail from start to finish, every ounce of expertise gleaned from years of experience, and the result you get is . . . majestic.

As we enter the foyer, we are greeted with the black and white marble checkered pattern – a look that's been done for hundreds of years, yet never goes out of style.

In the office/library, the flooring transcends to an amazing walnut hardwood that clearly elevates the office to masterpiece status.

The master bedroom and ensuite are a peaceful retreat. The dressing room is filled with custom cedar-lined drawers and a skylight above. The free-standing soaker tub and crystal chandelier fulfill every woman's dream, while the marble floor with its subtle inlay and the marble lined shower with its polished nickel faucets, rain shower and extra wall jets won't leave the male intrigues behind either.





The kitchen, designed by Bloomsbury Fine Cabinetry, is the center of their home. The cabinets are framed; that means they're built like furniture, making every section of them feel special. They're painted white, the island soft grey-taupe, all topped with Calacatta marble. The pantry is large and geared for action, housing both the work area with its double Wolf ovens and a sink, as well as the family's breakfast nook. This adds up to an almost clutter free main kitchen where you might enjoy the Subzero wine fridge and even the soft grey limestone floor boasting radiant heat to keep your toes warm.

The raised ceilings with their unique shapes and angled slants, the winding staircase, the gracious dining and sitting areas help create a classic elegance to the entire home, as does the rough cut limestone exterior that makes it feel like an Old English cottage. The Cedar shakes and low profile hand cut roof help too, while the wood-burning chimneys bring it all to life. Yet when you enter the house one of the first things that strike you is the sense of calm. You can't quite pinpoint the reason. Is it the soft hues, the shades of white on white? Is it the textures or the drama of the silks and linens? No, there's nothing that shouts "look at me". Instead this family has latched onto the approach that less is more and it seems to be working.



#### Get The Trend

**ARCHITECT** – Mahir Manios at ManArch Design  
[www.manarch.ca](http://www.manarch.ca)

#### KITCHEN/MASTER ENSUITE

**Custom Cabinets** – Bloomsbury Fine Cabinetry  
[www.bloomsburydesign.com](http://www.bloomsburydesign.com)  
**Faucets** – Perrin and Rowe from Amati Canada  
[www.amaticanada.com](http://www.amaticanada.com)  
**Sinks** – Blanco SteelArt at Amati Canada  
**Calacatta Marble countertops/backsplash/Limestone Floors** – Ciot  
[www.ciot.com](http://www.ciot.com)  
**Marble Fabricator** – Rocco at Carrera 90 Marble and Granite  
[www.carrara90.ca](http://www.carrara90.ca)  
**Chandeliers above kitchen table** – Union Lighting  
[www.unionlightingandfurnishings.com](http://www.unionlightingandfurnishings.com)  
**All other chandeliers** – Universal Lighting  
[www.greatlighting.com](http://www.greatlighting.com)  
**Appliances** – Wolf and SubZero Fridge at Tasco Appliances  
[www.tascoappliance.ca](http://www.tascoappliance.ca)  
**Dishwasher** – Miele [www.miele.ca](http://www.miele.ca)  
**Paint** – Benjamin Moore Aura CC-80 Gray Mist

#### ENSUITE BATHROOM

**Custom Cabinets** – Bloomsbury Fine Cabinetry  
[www.bloomsburydesign.com](http://www.bloomsburydesign.com)  
**Soaker Tub** – Victoria + Albert at Amati Canada  
**Faucets and Shower** – Perrin and Rowe at Amati  
**Satuorio Marble Floors and Marble Slab Shower and Countertops** – Ciot  
[www.salttilo-tiles.com](http://www.salttilo-tiles.com)  
**Mosaic tile inlay** – Saltillo Imports  
[www.salttilo-tiles.com](http://www.salttilo-tiles.com)  
**Sconces** – Summerhill Hardware  
**Chandelier** – Universal Lighting

#### FAMILY ROOM

**Paint** – Benjamin Moore Aura – Revere Pewter HC-172  
**Chandelier** – Murray Feiss available at  
[www.livinglighting.com](http://www.livinglighting.com)  
**Custom Built Fireplace Mantel, Custom Built-ins**  
 Design by ManArch Design  
[www.manarch.ca](http://www.manarch.ca)  
**Built by V & S Custom Cabinetry**  
[www.vnsccarpentry.com](http://www.vnsccarpentry.com)

#### OFFICE

**Design** by ManArch Design [www.manarch.ca](http://www.manarch.ca)  
**Walnut Custom Built ins** by V & S Custom Cabinetry  
[www.vnsccarpentry.com/](http://www.vnsccarpentry.com/)  
**Walnut Floor Herringbone Pattern** –  
 Michele Flooring Contact George Agostino 416-567-9734

#### WALNUT FLOORS

George Agostino at Michele Flooring 416-567-9734

**RAILING** – Custom Design by International Railing  
[www.internationalfenceandrailings.ca](http://www.internationalfenceandrailings.ca)

#### ALL CUSTOM INTERIOR DRAPES

Natalie at NM Interiors  
[www.nmintérieurs.ca](http://www.nmintérieurs.ca)