

CBP

SERVING ARCHITECTS, CONTRACTORS, AND OWNERS IN COMMERCIAL CONSTRUCTION

NOV/DEC 2014 Vol. 12 No. 9

The Open-Office Blues

Geothermal Heating And Cooling

Eco-Friendly Piping Solutions

Peak-Consumption-Shaving Software

cbpmagazine.com



Building Focus: Office Design 8



8 **The Open-Office Blues**
Architects and designers work to tailor the concept to individual client needs.

Nov/Dec 2014 Vol. 12 No. 9

DEPARTMENTS

- 6 The Green Angle
- 55 Showcases
- 57 Index
- 58 Portfolio

About The Cover

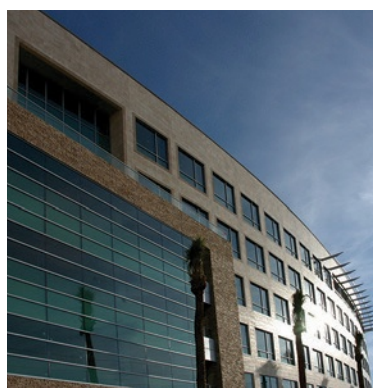
The Agro-Culture Liquid Fertilizer headquarters building in St. Johns, MI, is a LEED Gold structure that features ample natural light and repurposed barn wood. The base that supports the HVAC equipment is crushed brick from a smokestack that used to be part of the Michigan State Univ. campus. The cover image shows the atrium. Learn more on p. 20.

HVAC & Plumbing 16



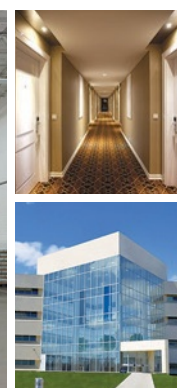
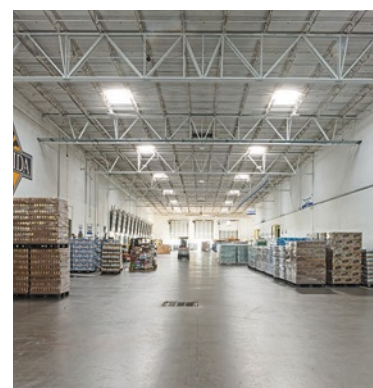
- 16** **Tulsa Arts Complex Showcases Sustainability**
Geothermal heating and cooling system is Guthrie Green's greenest component.
- 20** **Fertilizer Company Goes For Gold**
Eco-friendly pipe solution contributes to LEED Gold certification at environmentally aware fertilizer-manufacturer headquarters.
- 24** **Corporate Headquarters Showcases VRF System**
Franklin Energy saves 32% on electricity and 48% on gas with zoning system.

Building Technology 28



- 28** **Software Shaves Peak Consumption**
Part of NV Energy's energy-optimization effort, the demand-response platform reduces peak HVAC electric consumption by 10% to 15%.

Windows & Doors 31



- 31** **Raise A Glass For Daylighting**
Prismatic skylights make the difference for a beer-distribution facility.

Exteriors 36



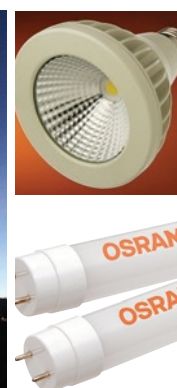
- 36** **Reinvent The Parking Experience**
The Chesapeake Energy car park is flooded with natural light by day and encircled by multi-colored bands at night.
- 38** **Tornado-Devastated Alabama Town Rebuilds With Brick**
Fired clay brick preserves historic character and integrity of downtown Cullman.

Interiors 46



- 46** **Shelter Upgrade Exceeds Expectations**
Animal-shelter renovation incorporates the latest animal-care standards and aims for LEED Gold.

Lighting & Electrical 52



- 52** **Lighting Goes To Great Heights For Old Glory**
Narrow beam pattern highlights a memorial flagpole with help from Phoenix Products' fixtures.



Flooring underlayment

A line of flooring underlayment products includes sound-deadening and crack-isolation products along with those for floor reinforcement. KeedeRoll 100 and 300 uncoupling mats provide waterproofing and non-waterproofing options. KeedeLath is a synthetic self-furring lath. QQ Step Soft is a sound-deadening recycled-rubber mat promoting anti-fracture of tile while increasing sound ratings.

Dependable LLC, Mayfield Heights, OH
Circle 86



Architectural glass

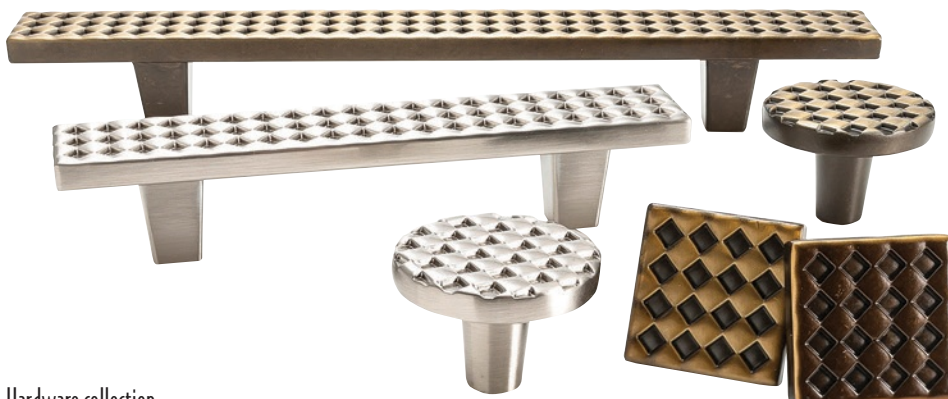
Decorative architectural glass uses Bart Halpern's Glitterati textiles as the basis for safety building glass. Subtle at a distance, natural colors and metallic hues feature five colors, champagne, gold, copper, silver, and black, laminated in low-iron glass.

Bendheim, New York
Circle 87

Frameless ceiling products

Island frameless, stone-wool ceiling products are said to provide acoustic comfort for open-plan areas including offices, restaurants, and spaces where sound can be overwhelming to occupants. The modular format is available in square or rectangular sizes of 3 ft. 9 11/16 in. or 5 ft. 9 5/16 in. The frameless shape has a sharp, minimalistic edge and subtle bevel. Smooth texture and white color optimize light reflection.

Rockfon, Chicago
Circle 88



Hardware collection

Argyle cabinet-hardware collection is available in three finishes and four sizes of knobs and pulls. Made from recycled aluminum, the hardware can contribute to LEED credits. With a nod to the Scottish Highlands, the collection plays on a graphic pattern of small diamond shapes.

Du Verre Hardware, Toronto
Circle 89

Accelerated Engineering

Exposed- and concealed-fastener panels used horizontally provide a clean-lined, contemporary aesthetic for this prosperous automobile business in Lubbock. Interior PBC panels give the same rugged durability and modern feel as the stylish exterior.

Visit www.mbc.com/carizma for more information.



Scan each QR code for detailed product information.

PROJECT: Carizma Motors

LOCATION: Lubbock, Texas

ARCHITECT: ADC Inc.

CONTRACTOR: ADC Inc.

PANEL PROFILE: PBC (Charcoal Gray / Galvalume®), FW-120 (Galvalume®)



PHONE: 877.713.6224
E-MAIL: INFO@MBCI.COM



Copyright © 2014 MBCI. All rights reserved.