

THE MAGAZINE of *SPLENDID HOMES and GARDENS* • MAY/JUNE 2015

# DESIGN

NEW ENGLAND

serene  
settings



designnewengland.com

\$4.99 • DISPLAY UNTIL JULY 6, 2015

0 5 >



FINDING TRANQUILLITY FROM CAPE COD TO MAINE





## POTENTIAL REALIZED

Attention to light, layout, and a dash of Modern design bring out the best in a 19th-century Italianate apartment

WRITTEN BY JOE-ANN HART • PHOTOGRAPHED BY MICHAEL J. LEE





**A COZY CHAIR** by an arched window (LEFT) makes for a contemplative corner in the master suite. The wallpaper in the powder room (ABOVE) plays off the honeycomb detail in the vanity. The patterned carpet brings depth to the master bedroom (FACING PAGE, TOP), while bits of crystal in the chandelier reflect light even when the fixture is off. In the master bath (FACING PAGE, BOTTOM), the swag of the crystal chandelier is captured in the wallpaper. The bathtub is a limestone composite.

origins are lost in the building's past. The metallic tone is carried onto the striated bronze wallcovering and the arboreal sconces above the sideboard. Yet for all the drama of the stairs, a circular antique table — one of the few furniture favorites the owners had shipped across the seas — anchors the room.

The ceiling received as much consideration as the floor plan. To start, the place was lousy with plexiglass-bubble skylights. "I can't even remember how many we got rid of," says Verbridge, who brought natural light into the family and dining rooms using historically appropriate pyramid skylights. Installed over paneled recesses with hidden perimeter lighting, the windows glow even at night. In the kitchen and family room, a coffered ceiling creates a more personal ambiance, and in the master suite, a blue-gray wash overhead enhances feelings of comfort and protection. In many rooms, mesh or crystal fixtures transform the lighting into design features, projecting geometrics onto the ceiling. "A little magical," says the owner.

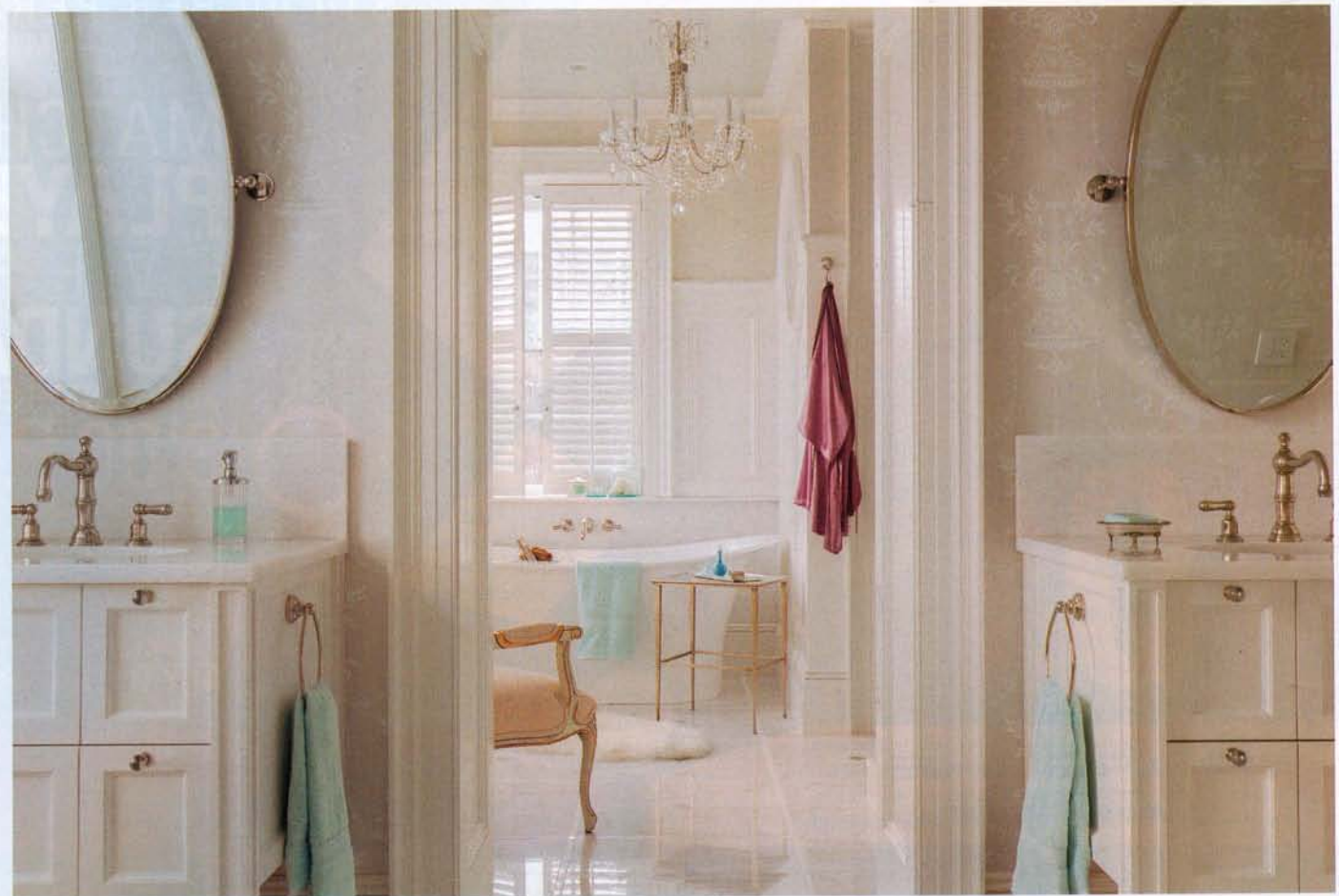
The tall, arched windows of the living room, original to the 19th-century building, now conceal 21st-century shades controlled from an iPad. Verbridge replicated that tight arch in the study doors and bar-

reled hallway ceilings, then introduced a curved line in matters large and small, from the long sweep of the pillared divider between the living room and dining room to the contours of the Saarinen table in the kitchen to the bateau tub in the master bath. In the dining room, cabinets by RF McManus Co. of Charlestown, Massachusetts, have flat fronts and arched doors fitted with leaded stained glass in an organic interlocking pattern. Such geometrics are another unifying element. Subtly embedded in sea-foam greens and sandy taupes, they pop up in carpeting, wallpaper, and fabric. "The level of detail is the difference at the end of the day," says the owner, commenting on the way honeycomb openwork on a lavatory vanity is replayed on the wall.

The couple's long-distance design relationship with Verbridge was sustained with frequent face time and a joint desire to create a cohesive whole from disparate pieces. Verbridge never ran from the challenging work site, but the project was not without its tense moments. The two-story spiral staircase had to be lowered into its slender casement from high above the building, dangling from a crane, but not only did it connect, it was a perfect fit. ■

FOR MORE  
DETAILS,  
SEE  
RESOURCES







**38-45 • Visit/Romancing a Brownstone**

**Interior design:** Jennifer Glickman, Glickman Design Studio + Interior Design, Boston; *glickmanstudio.com*. Living room: Wall color: Cloud Gray, Benjamin Moore; *benjaminmoore.com*. Mirror: Restoration Resources, Boston; *restorationresources.com*. Sofa: Mitchell Gold + Bob Williams; *mgbwhome.com*. Side chairs: One Kings Lane; *onekingslane.com*. Louis XVI chair: Craigslist; *craigslist.org*. Chair fabric: Pierre Frey; *pierrefrey.com*. Pendant: Pottery Barn; *potterybarn.com*. Vintage botanical prints: Sowa Open Market, Boston; *sowasundays.com/openmarket*. Faux antlers: Etsy; *etsy.com*. Dining room: Chairs: Eames molded plastic side chairs, Design Within Reach; *dwr.com*. Cabinet: Crate & Barrel; *crateandbarrel.com*. Master bedroom: Bed: Williams-Sonoma Home; *williams-sonomahome.com*.

**62-69 • Kitchen+ Bath/Raw and Refined**

**Architecture:** Aamodt/Plumb Architects, Cambridge, MA, and Austin, TX; *aamodtplumb.com*. **Builder:** Shepherd-PMC, Winthrop, MA; *shepherdpmc.com*. Countertop: Caesarstone; *caesarstoneus.com*. Pendants: George Nelson, Design Within Reach.

**90-97 • Design Focus/A House for Ben**

**Design and construction:** Nicola's Home, Yarmouth, ME; *nicolashome.com*.

**112-117 • House Guest/Andra Birkerts's Site-Specific Style**

**Painting:** Sarah Innes, MI, *sarahinnes.net*. Pendant: Dis-cocó, Marset; *marset.com*. Collage: Glen Michaels, MI; *glenmichaels.com*. Chalk buildings: Matt Austin, NY; *mattatustin.net*.

**120-129 • Architecture/Perfect Match**

**Architecture:** FRAMe Architecture + Design, Orleans, MA; *fram-e.co*. **Builder:** Tim Dickey Design Build, Truro, MA; *timdickeydesignbuild.com*. Railing: Nauset Marine, Orleans, MA; *nausetmarine.com*.

**130-135 • Garden/Swept Away**

**Garden design:** Michael Walek, York, ME; 207-337-0769; *ynotpossible@yahoo.com*. **Stonemason:** Tom Dunn of Stoney Brook Landscaping, Cape Neddick, ME; *stoneybrooklandscaping.com*. **Moongate:** Fernwood Inc., Cape Neddick, ME; 207-363-7891.

**136-143 • Architecture/Lasting Legacy**

**Architecture:** Hammer Architects, Cambridge and Truro, MA; *hammerarchitects.com*. **Landscape architecture:** Keith LeBlanc Landscape Architecture, Boston; *kl-la.com*. **Builder:** Homes by Sisson Inc., Orleans, MA; *homesbysisson.com*. Great room: Sofa: Hans Wegner, Machine Age, Boston; *machine-age.com*. Swivel chairs: Eero Saarinen, Machine Age. Dining table: Finn Juhl, Look Modern, Portland, OR; *lookmodern.com*. Dining chairs: Erik Buck, Look Modern. Screen porch: Chairs: Richard Schultz, Knoll; *knoll.com*. Kitchen: Stools: Harry Bertoia, Knoll.

**144-151 • Interiors/Potential Realized**

**Designer:** Siemasko + Verbridge, Beverly, MA; *svde sign.com*. **Builders:** F.H. Perry Builder, Hopkinton, MA; *fhperry.com*. Millwork: R.F. McManus Co. Inc., Charlestown, MA; *rfmcmanus.com*. Dining room: Spiral stair: Arcways, Neenah, WI; *arcways.com*. Leaded-glass cabinetry: Daniel Maher Stained Glass, Cambridge, MA; *dmstainedglass.com*. Wallpaper: Phillip Jeffries; *phillipjeffries.com* through Webster & Company; *webstercompany.com*. Sconces: David Iatesta; *david iatesta.com* through Studio 534; *s5boston.com*. Chairs: Artistic Frame; *artisticframe.com* through Icon Group; 617-428-0655. Office: Chairs: Duralee; *duralee.com*. Ottoman: Schumacher; *fschumacher.com*. Window treatments: Carole Bruce Workroom, Beverly, MA; *cbworkroom.com*. Living room: Chandelier and sconces: Grag Studio; *gragstudios.com* through M-Geough; *m-geough.com*. Chairs: A. Rudin; *arudin.com* through M-Geough. Coffee Table: Nella Vetrina; *nellavetrina.com*. Bench: Century Furniture; *centuryfurniture.com*. Table lamp: Phoenix Day; *phoenixday.com* through M-Geough. Master bedroom: Bed: Hickory White; *hickorywhite.com* through Grand Rapids Furniture; *grandrapidsfurniture.net*. Bench: Charles Spada; *charles spada.com*. Table lamps: Lawrence & Scott; *lawrence andscott.com* through M-Geough. Chandelier: Currey & Company; *curreycodealers.com*. Carpet: Landry & Arcari; *landryandarcari.com*. Master bath: Tub: Victoria & Albert; *vandabaths.com*. Family room: Sofa: The Charles Stewart Company; *charlesstewartcompany.com*. Coffee table: Motif Designs; *motif-designs.com* through Berkeley House Inc.; *berkeleyhouseinc.com*. Kitchen: Table: Eero Saarinen, Design Within Reach. Chairs and barstools: A. Rudin through M-Geough. Powder room: Wallpaper: Cole & Son through Lee Jofa. Fixtures: Ferguson, Lynn, MA; *ferguson.com*.

**CORRECTION**

On Page 24 of the March/April 2015 issue, Best School Entry at the International Interior Design Association New England Chapter's fashion show was won by New England School of Art and Design.

A Blade of Grass, <i>abladeofgrass.com</i>	103
A. Bonadio & Sons Landscape Contractors, <i>abstoday.com</i>	96
Acorn Deck House Company, <i>deckhouse.com</i>	94, 95
Acorn Tree & Landscaping, <i>acornreeandlandscape.com</i>	44
Advanced Communications Technologies, <i>actces.com</i>	96
All American Landscaping, <i>allamericanlandscapingllc.com</i>	98
Andra Birkerts Design, <i>andrabdesign.com</i>	97
Atlantic View Inc., <i>atlanticviewinc.com</i>	92
Audio Concepts, <i>audioconcepts.com</i>	45
Bartlett Tree Experts, <i>bartlett.com</i>	110
Bertola Custom Homes & Remodeling, <i>bertolacustom.com</i>	53
Boston Design Center, <i>bostondesign.com</i>	Cover 4
Broadleaf Landscape Architecture, <i>broadleafvt.com</i>	76
California Closets, <i>californiaclosets.com</i>	113
Cedarworks Inc., <i>cedarworksonline.com</i>	78
C.H. Newton Builders Inc., <i>chnewton.com</i>	15
Chilton Furniture, <i>chiltons.com</i>	65
Clarke - Official Sub-Zero & Wolf Showroom, <i>clarkeliving.com</i>	37
Coldwell Banker Previews, <i>coldwellbankerpreviews.com</i>	47
Concord Garden Tour, <i>concordmuseum.org</i>	158
Connor Homes, <i>connorbuilding.com</i>	73
Copley Wolff Design Group, <i>copley-wolff.com</i>	98
Crown Point Cabinetry, <i>crown-point.com</i>	11
Cushman Design Group, <i>cushmandesign.com</i>	79
Custom Floors Design, <i>customfloorsdesign.com</i>	17
Cutting Edge Homes, <i>thinkcuttingedge.com</i>	87
Dan K. Gordon Landscape Architects, <i>dangordonassociates.com</i>	51
Darby Road Home, <i>darbyroad.com</i>	55
David M. Mullen Architect, <i>davidmullenarchitect.com</i>	58
Design New England Gropius House Event	107
Design New England, <i>designnewengland.com</i>	116, 157
Designer Bath, <i>designerbath.com</i>	93
Diane Burcz Interior Design, <i>dianeburcz.com</i>	59
Didriks, <i>didriks.com</i>	58
D. Michael Collins Architects, <i>dmcarch.com</i>	78
Dover Rug & Home, <i>doverrug.com</i>	60
Dream Kitchens, <i>adreamkitchen.com</i>	88
ECO Structures Inc., <i>ecostructures.com</i>	118
Eport Wood Products, <i>eportwoodproducts.com</i>	106
Ethan Allen, <i>ethanallen.com</i>	41
European Country Antiques, <i>ecountryantiques.com</i>	98