

The Art of Kitchen & Bath Design®

K A Kasmir
Publication

DESIGNER BATHS & Master Suites

BY PROFESSIONAL DESIGNERS

A Sense of Well Being

Suite Escape

Redefining the Master Suite

Laundry Care

Extra Ordinary Storage

Dressing Rooms & Closets

Little Luxuries

Bath Accessories

Be Our Guest

Stellar Guest Baths That Make A Statement

NINTH EDITION

Keep on Sale to 09/30/11

\$14.95US / CAN



www.kasmarpub.com



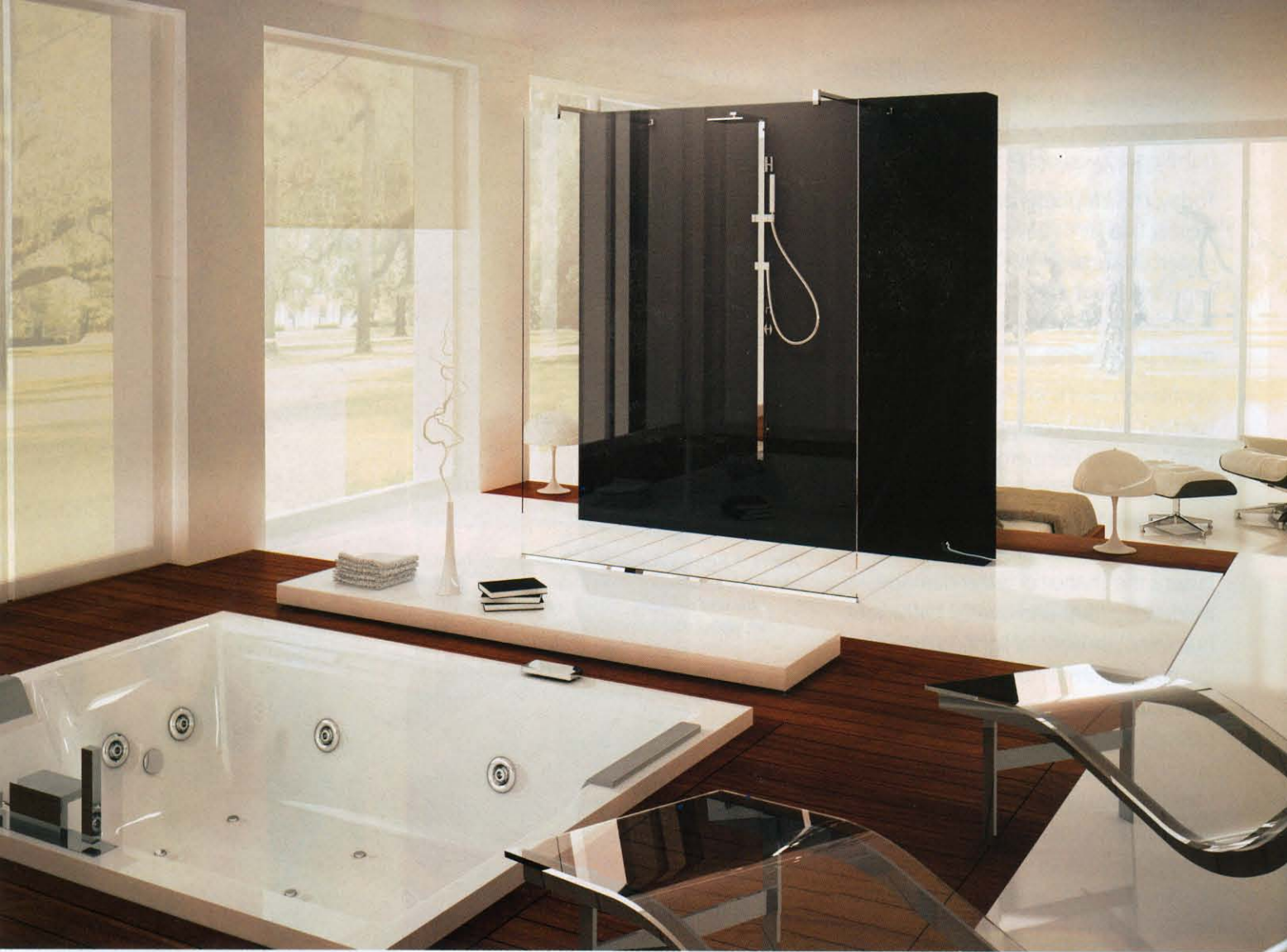
A personal spa is fully equipped with a custom sauna room, whirlpool tub and luxury state-of-the-art shower system. Aesthetics were kept minimal and modern with quarter-sawn red oak cabinetry stained a rich dark cocoa, and natural slate used throughout. Design courtesy of Michelle Bloyd, Cabinet Concepts & Interiors. Dura Supreme Cabinetry. Jason whirlpool. Helo sauna. Landmark Photography.

A SENSE OF WELL BEING

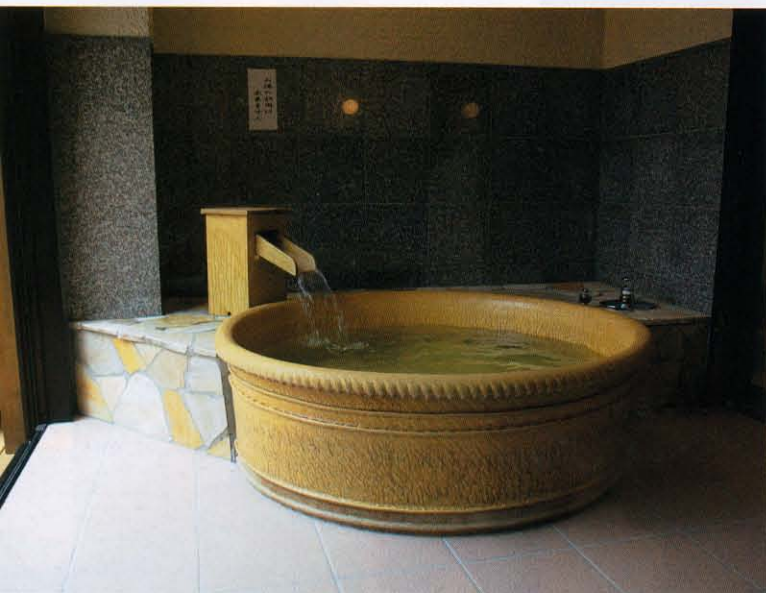
M

ost of us are in lifestyles of demanding pace and less personal time. It is now possible to create your very own bath/spa paradise in the comfort of your own home. It can be a haven for relaxation and adventure, and be there for you at your own convenience. This Mecca will revitalize and nurture your mind, body and spirit in a serene setting. It is your choice if the setting is calm, romantic, adventurous or entertaining. Designers from east coast to west share their ideas for transforming bathrooms into spa retreats and home gyms:

- A wonderful bathtub can turn a bath into a spa-like retreat. Whether it's a deep, soothing soak you want or invigorating whirlpool hydrotherapy, today's bathtubs offer an extensive selection to choose from. These super soakers include technical advancements both fun and functional: colored underwater lighting to set a mood; self-cleaning whirlpools for easy maintenance; heated head and back rests; built-in TV and web access... and more.
- Whirlpool (jetted) tubs offer a welcome reprieve in the master suite sanctuary. They feature interior contours that fit the shape of the body, padded headrests and, can be designed for more than one bather.



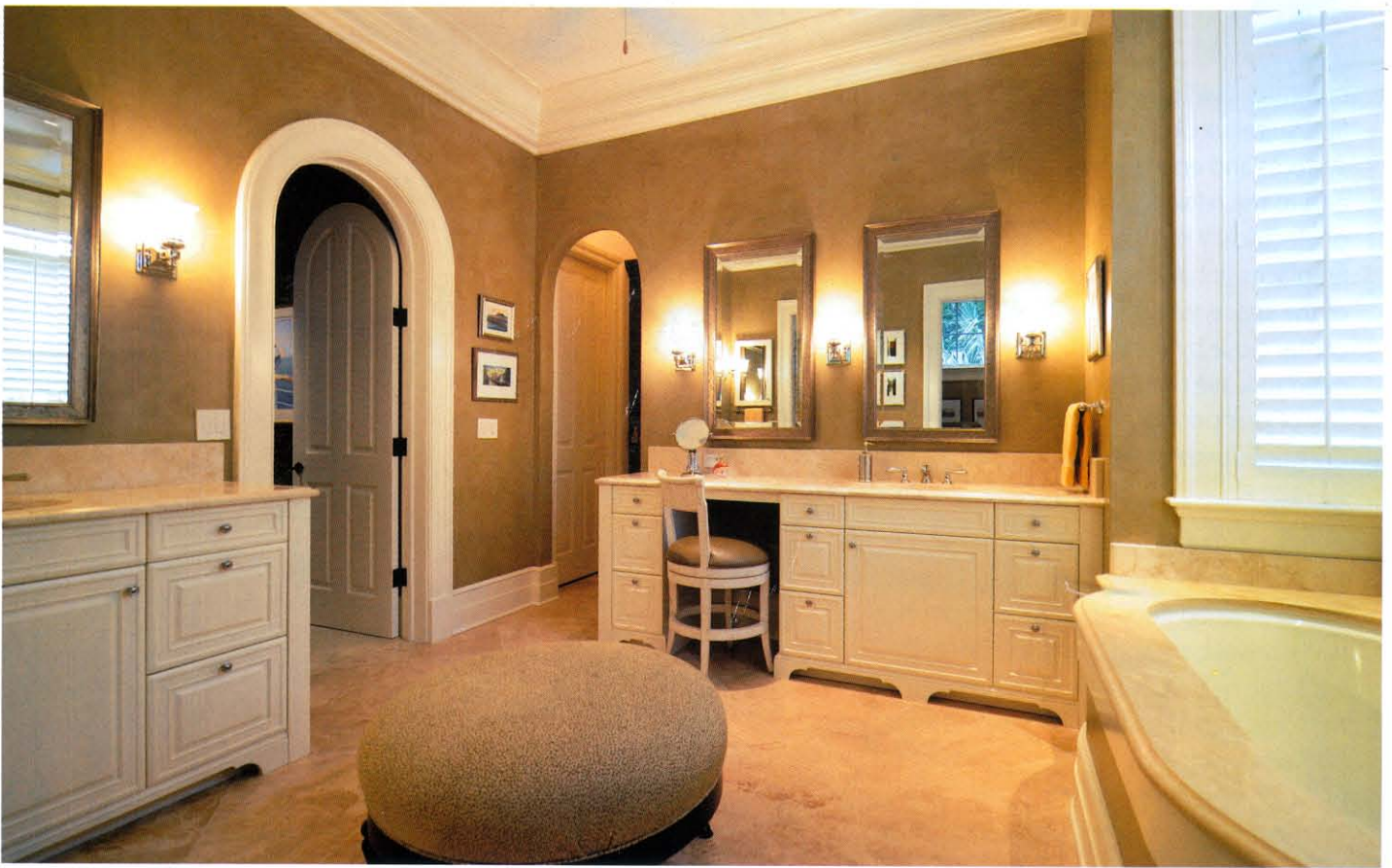
Novellini's Sparkle shower is elevating the bath experience to a level not before achieved in bath design. A stand-alone shower screen with embedded LED blue lights, Sparkle lights up the shower experience.



Aquapal tub and filler.



KWC and Hansa customize the shower experience with award-winning systems including the Hansacolourshower.



Wood-Mode French Vanilla cabinetry, Turkish travertine and French limestone create a restful palette that is enhanced by honey-tone walls. Bath designed by Linda H. McLain, CKD, Signature Kitchens & Baths of Charleston, Inc. Photography: Chris & Cami Photography, Mt. Pleasant, SC.

SUITE ESCAPE

By Ellen Cheever, CMKBD, ASID



he master bedroom and bathroom have evolved from a sleeping/dressing/bathing space to a more personalized adult retreat. This special area starts at the bedroom door and blends the restful feeling of a small bath with a well-organized dressing area, a “wellness center” that might include a private gym, and a peaceful sleeping space. There may even be a “morning kitchen” with storage for an evening beverage or a fresh cup of coffee in the AM.

These spaces take careful planning and imaginative usage of the available square footage. Here are some ideas about how to plan such an area, as well as a checklist of technical details to make sure no important planning details are overlooked.

THE ADULT RETREAT

Such a special space can provide a great anecdote to the chaotic life outside the home and an oftentimes overscheduled life within the home!

Finding the square footage is the challenge! In a renovation situation, start the planning process by identifying the square footage of the existing sleeping/closet/bath area – and any surrounding rooms that might be able to be repurposed.



Novellini tub debuts the Sense Bathtub from the Elysium Collection. Designed to appeal to every bodily sense, this exquisite vessel can be built to accommodate one or two bathers in total comfort, thanks to the built-in head rests and sculptured interior. When fully loaded, this tub features up to 16 airpool nozzles, eight whirlpool nozzles, chromotherapy lights, a disinfectant system and a radio with MP3 plug and touch screen remote control.

Which is more important to you – bathing or showering? Next, decide what is most important to you and any other adults who will share this “mini-apartment” retreat. Your space may accommodate both a luxurious bathtub and a “power shower”. However, start the planning process by prioritizing these two water areas. For bathers—will it be a tub for one, or more? Is a restful bath the goal or a rejuvenating water massage experience? Much like bathing choices, showering can include everything from a body jet hydromassage experience to a feeling of walking through a gentle Spring rain.



Oceanus tub in travertine from Tyrrell & Laing.

Both bathing and showering can be enhanced with sensory experiences such as:

- **Aromatherapy:** The use of pure essence of aromatic plants, flowers and resins designed to help re-establish the harmony between body and mind.
- **Lumentherapy:** The use of full spectrum light to help combat the negative effects of seasonal lack of natural light.
- **Thermotherapy:** Developing dry or wet heat to raise the body temperature and boost the metabolism (steam showers or saunas).
- **Chromatherapy:** Enveloping the body in a captivating sequence of colors created by a predetermined sequence or a custom set sequence, each lasting about one minute, adding to the relaxing experience of bathing or showering.

THE BATHING EXPERIENCE

Bathing has dramatically expanded beyond the pulsing, hard-hitting jets of early massage systems – and the type of bathing experience planned impacts the size of the fixture specialized.

- **The Relaxation Experience:** Effervescent air bubbles clinging to and caressing the skin. Such a bathing pool can be enhanced with oils and foams, or the wonderful Chromatherapy color sensory experience described above.
- **The Space Experience:** Rather than restful air bubbles, the bather enjoys a jetted tub which mixes air and water through controllable, adjustable jets.
- **The Spa/Massage Experience:** The bath takes the place of a masseuse! Specifically designed special purpose jets provide a stimulating, stress-relieving massage to the back, neck, feet or legs.



A slipper tub for the 21st century – Victoria & Albert's Amalfi tub with Turbo filler.

LITTLE LUXURIES: BATH ACCESSORIES

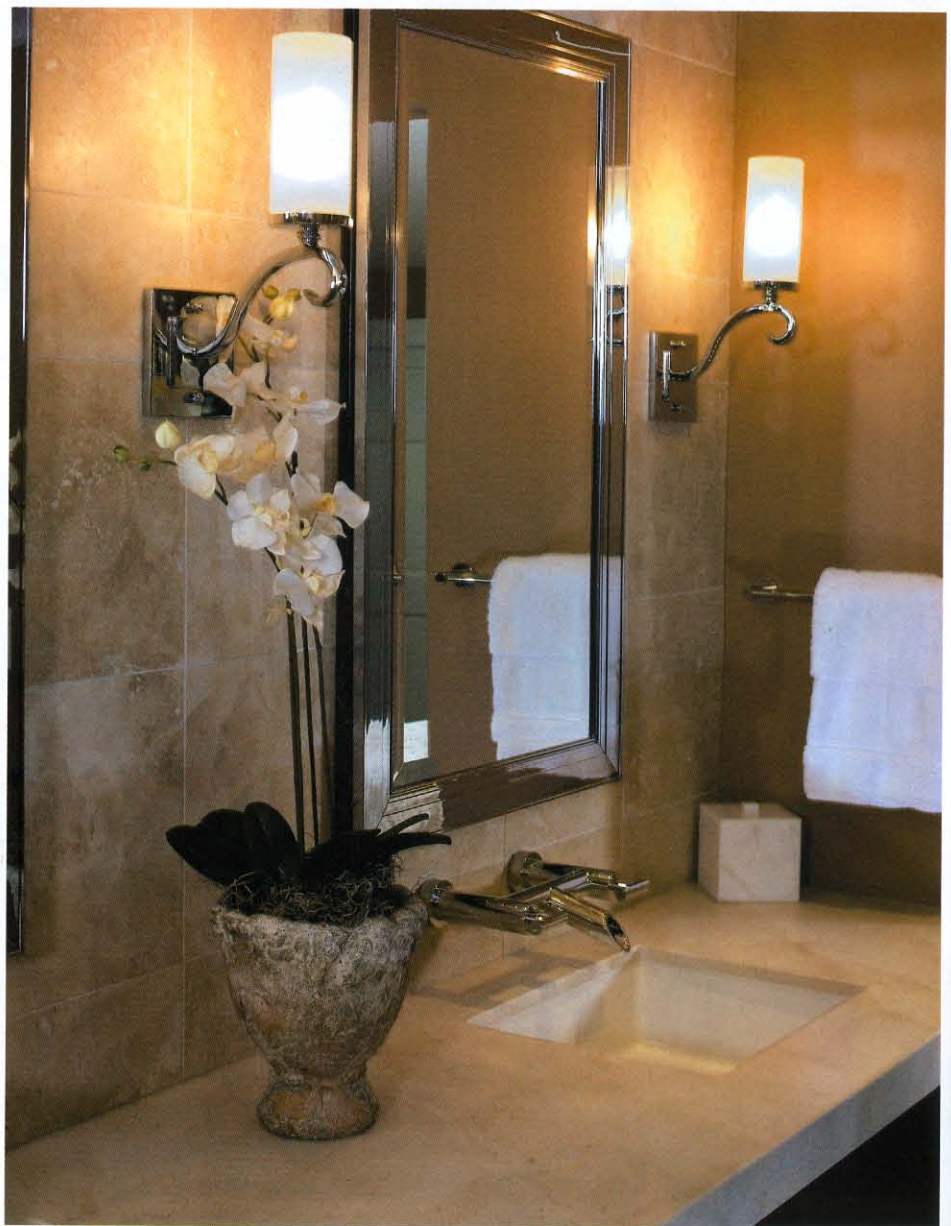
A master haven might include a towel warmer, multi-door medicine cabinet, fog-free and magnifying mirrors, and a coffee bar/beverage/snack center with built-in coffee maker, under counter refrigerator, freezer, ice maker, and wine storage chillers with a built-in humidor for the cigar connoisseur.



Kallista presents Barbara Barry Counterpoint, a collection that reflects the sophisticated style of the 1930s.



A vanity grooming rack is a must-have for organizing curling irons and blow-dryers, and keeping cords tangle-free and concealed. Courtesy of Dura Supreme Cabinetry.



Custom wall sconces and extra deep medicine cabinetry added function and aesthetics. Design by Penny Chin, CID, NKBA, Elements In Design La Quinta, CA. Robern medicine cabinet. Photography: Rio Costantini



Moen's new towel bar hooks add convenient space solutions in the bath. Shown: brushed nickel.



Italian-designed Amba Towel Warmers combine visual appeal with cutting-edge functionality.



The carousel is one of many storage options available from Plain & Fancy Cabinetry.



Dual purpose: Great Grabz safety grab bars as towel bars and tissue roll holders.



Update your bath with naturally slip resistant, handcrafted burmese teak shower/tub mats by Teakworks4U.



Lasertron lighted glass door cabinets.



Robern Uplift Cabinet for the vanity and makeup area.



Provide your family with safe filtered water in the bathroom from EverPure.



California Faucets' CeraLine stylish new award-winning linear shower drains allow for curb-free, fully accessible shower entry. Shown: Edge Trim features an extra stainless steel veneer for a crisp, streamlined look. Also available in Custom Trim that accepts floor tile for an integrated look.

Cameron Snyder,

CKD

& Judith Whalen

**Roomscapes Luxury
Design Center**

40 Reservoir Park Drive

Rockland, Massachusetts 02370

(781) 616-6400

www.RoomscapesInc.com

Designs@RoomscapesInc.com



In addition in the second floor allows for this magnificent master suite retreat.

The master-bathroom suite features a walk-in shower with spray and steam features, a soaking area with built-in TV and fireplace, a waterfall accent, double vanities, make-up area, water closet room with linen cabinet and separate storage room for off-season storage.

Between the bedroom and the bathroom there is a built-in piece with refrigerated beverage drawers that are accessible from both the bedroom and the bathroom areas.

Special Design Features:

Stone & tile waterfall; built-in fireplace and TV over the soaking area; Lumicor insert in the door leading to off-season storage room; Murano Glass tile accents in both the waterfall & the shower areas.

Products Used:

Brookhaven Cabinetry by Wood-Mode, Springfield raised panel, Cordovan Red stained maple; Bella Forma forged brass hardware; granite with double thick edge color: Metallicus; field tile is marble Salzburg Taupe with various inserts & accents; Bain Ultra air jet tub; Grohe Kensington chrome & Swarovski crystal faucets & tub filler; Kohler Caxton White basins; Sub-Zero integrated fridge drawers in coffee/beverage bar.

Photographer:

Dan Cutrona





Scott and Sandra Gjesdahl

Bristol Design & Construction

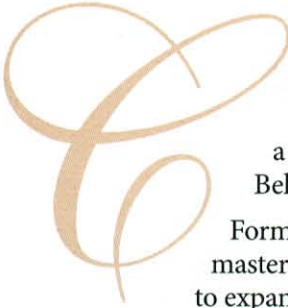
2006 196th Street SW, Suite 111

Lynnwood, Washington 98036

(425) 775-5588

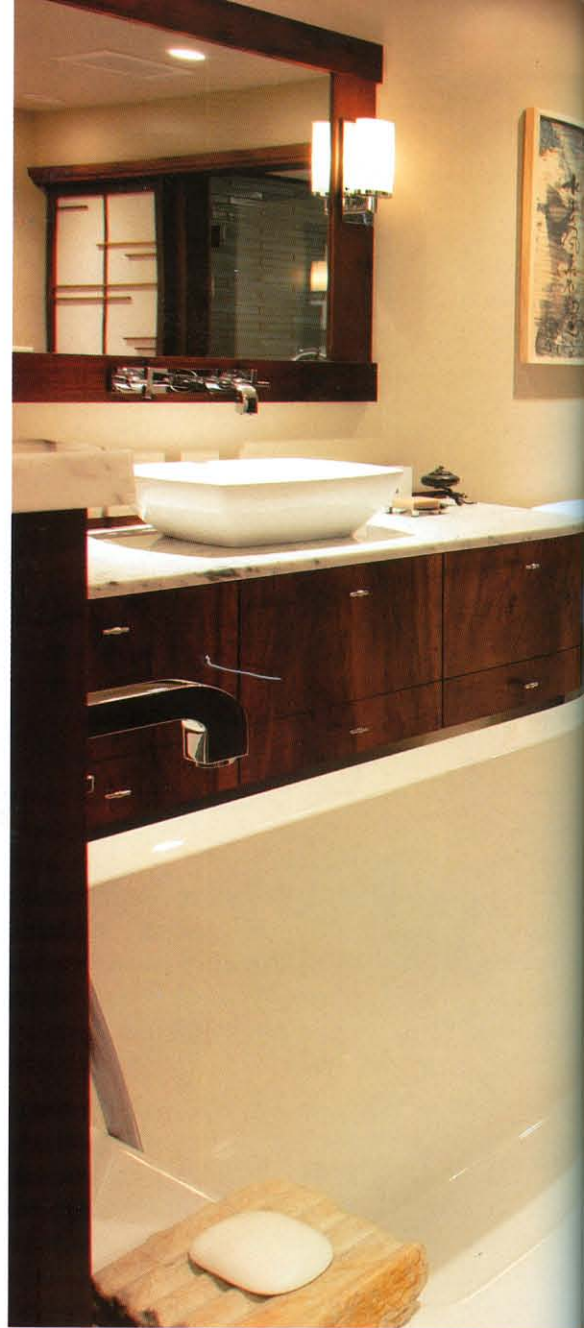
www.bristoldc.com

sandra@bristoldc.com

 an one 12' x 17' room have enough shape for generous his and her closets, a laundry room, utility room and serene master bath, including a freestanding soaking tub and a shower for two? Believe it!

Form and function truly merge harmoniously in this master suite. Before, a smaller master bathroom longed to expand. However, the only adjoining space was a utility room that contained the water heater, furnace and washer/dryer. These items were cleverly integrated into the master suite plan behind sliding shoji doors that flank the shower. A full-size stacking washer/dryer is on the right and an on-demand water heater is on the left. Advancements made in this equipment enabled the use of every square inch and opened up creative opportunities for space planning.

Lumicor was used in the shower to bring natural light in to this otherwise interior windowless room. His and her closets are built of custom Imbuia shoji. The Imbuia tub deck extends and cantilevers to create a bench. The handmade blue tiled column offers a beautiful architectural element from the bedroom, while screening the tub. The tile fades from dark to light, resulting in a calming introduction of bold texture and color, contributing to the overall dramatic yet serene atmosphere.

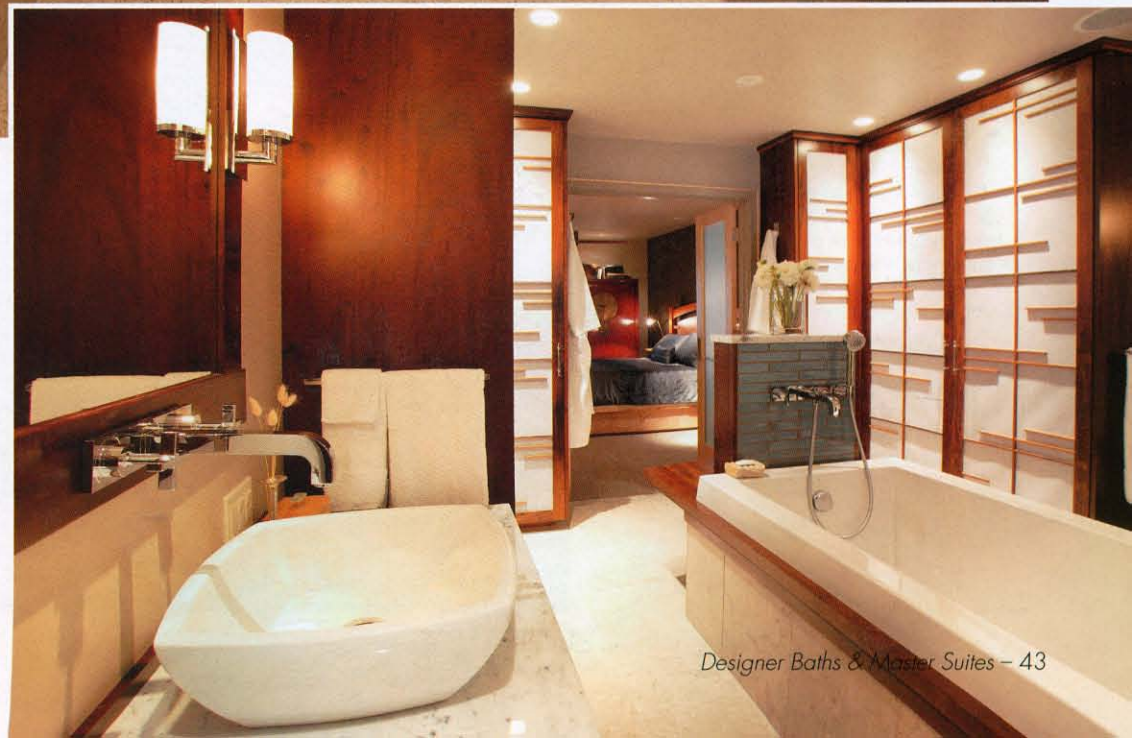


Products Used:

Custom cabinetry and shoji screens designed by Bristol Design & Construction; Bain Ultra tub; Lacava basins; Hansgrohe Axor Citterio fixtures/fittings; Kohler toilet; Carrera marble countertops; Gascogne Blue limestone flooring; Trikeenan Tileworks walls; Ginger lighting; Lumicor custom windows.

Photographer:

Dane Gregory Meyer



Jane Page Crump,
ASID

Jane Page Design Group

500 Durham Drive
Houston, Texas 77007
(713) 803-4999

www.janepagedesigngroup.com



Inspired by the “winter cloud” marble countertops and tub deck in the bathroom, a neutral color palette was created for this master suite. The designers wanted to maximize the amount of detail and texture throughout the space to ensure that it wouldn’t become just “another beige room.” Jane Page Design Group supplied the cabinet designs, lighting selections, tile details, finishes and furnishings.



Products Used:
Custom jobsite cabinetry, full overlay raised panel, custom finish with glaze; Winter Cloud marble slab countertops and tub deck; Latte Mexican travertine flooring; satin finish faucets; undermount basins in Bone; Bain Ultra air jet tub; Toto toilet/bidet.

Photographer:
Bruce Bennett

Right: The beautiful custom cabinetry includes countertop doors that open to reveal the morning coffee bar. A refrigerator below stores cream, water and juice.



G

orgeous cabinets and millwork were painted and glazed to add depth to the neutral palette. Special attention was given to details such as the slab “plinth” at the base of the pilasters, sconce back plates and intricate mirror insets.

A stunning beveled and leaded glass window allows natural light into the space. Five types of “opaque” decorative glass were carefully selected to provide the clients maximum privacy. The design was inspired by the motif of the stone backsplash liner.

A complex combination of stone tile includes a stone field and base, patterned motif liner, standard and “basket weave” mosaics, and hand-cut contrasting stone borders. (The towels were custom monogrammed in the same fashion.) A dramatic lighting scheme enhances the glazed metallic ceiling, and gorgeous crystal and antique silver leaf sconces.

Special Design Features:

The large steam shower includes multiple body sprays, dual showerheads and mosaic tile accents. Completing the suite is a separate water closet with a multi-function toilet/ bidet, and adjoining exercise room.



The stone liner motif was repeated in the custom-etched and beveled mirror panels above the vanity and the leaded glass window over the tub.

Mary Liebhold,
CKD

The Kitchen Specialist, Inc.
3407 University Drive
Durham, North Carolina 27707
(919) 490-4922
design@thekitchenspecialist.com
www.thekitchenspecialist.com



Products Used:
SieMatic Cabinetry, dark oak; Pyrolav countertops, custom color; CeasarStone countertops in Eggshell; Durango limestone flooring with glass accents; BainUltra tub; Dornbracht freestanding tub filler; Toto white oval basins; Sigma "Palermo" faucets' Hansgrohe shower faucets; Toto Neorest toilet.

Photographer:
Michael Zirkle

This clean contemporary master suite is the result of a remodel and update of an existing bathroom and closet. The original space had '70s style fixtures around the perimeter; the center was empty except for existing structural posts.

In a complete rearrangement, the double vanity was located in the center of the space to create a walkway behind. A sculptural steel arch was designed to suspend the double-sided mirrors and the vanity lights.

A private commode with a modern glass lavatory are housed separately. Also added was a large walk-in shower with a convenient 'drying' bench.



Mark Haddad,
AKBD

Haddad Hakansson LLC
P.O. Box 614
Belmont, Massachusetts 02478
(617) 741-3131
www.haddadhakansson.com
info@haddadhakansson.com



aving renovated all of the family spaces, the master suite was the last and most special of spaces for the homeowners. This oasis has become their personal escape. With its cathedral ceiling, the space soars and takes advantage of the natural southeast light. The ceiling also allowed the use of the heirloom Waterford crystal chandelier—a focal point in the room.

Separate his and hers vanities accommodate their various needs as does the large his and hers shower with steam, separate thermostatic controls for each shower head, each pair of body sprays, and the handheld shower.



A neutral palette of beiges and browns was kept consistent throughout the suite to balance the very expansive space and blend with the hallway scheme. The sitting area includes two swivel chairs and a custom-made ottoman that sits lower than the chairs. Not shown: Gas fireplace with a custom surround; custom wall-unit with open bookshelves, flat-screen TV, and surround-sound.

The bathroom, with its two entrances, is accessible through the main door from the bedroom and her adjacent walk-in closet while the second entrance, on the far side, has direct access into his walk-in closet and the bedroom.

Products Used:
Pennville Custom Cabinetry, Windsor door style, Antique White crackle on cherry; Brown Emperador Dark marble countertops and flooring; Kohler Caxton basins in Biscuit; Rohl 8-inch rain shower head; California Faucets Venice polished nickel faucets with crystal levers, tub filler and shower faucets; Bain Ultra Balneo Naos air bath; Steamist steam shower; Toto Lloyd toilet; Baldwin hardware; Ginger Empire Series accessories.

Photographer:
Joseph St. Pierre



