

Wave of the Future



Each year, the editors of *Hospitality Design* (HD) magazine search out the industry's rising talent—young enough to be thought visionary, but tested enough to be recognized for their achievements—for their annual Wave of the Future award. Meet hospitality's visionaries tomorrow at 9:45 a.m. room D128 in a conference session sponsored by D'Style, Electric Mirror, Greater Miami Convention & Visitors Bureau, Sherle Wagner, and Maya Romanoff.

Join Wave of the Future honorees Matt Abramcyk, Beatrice Inn/Smith & Mills/Employees Only; Alex Calderwood, Ace Hotel Group; Denise Corso, CorsoStaiocoff; Stephanie Goto, Stephanie Goto; Steve Brabson and Frank Medrano, Franklin Studios; Leonard Lee, Wilson Associates; and Sean Tanner, Cagley & Tanner, for a discussion moderated by Stacy Shoemaker Rauven, senior managing editor, HD magazine, about their projects and industry trends.



A Miami-style café con leche reception with a gallery showcasing the honorees' work and hosted by the session sponsors will immediately follow in the Wave of the Future Gallery, next to HD's booth, #439.



Top row, from left: Alex Calderwood and Denise Corso. **Middle row, from left:** Frank Medrano, Steve Brabson, and Sean Tanner. **Bottom row, from left:** Leonard Lee, Stephanie Goto, and Matt Abramcyk.

Roger Thomas to Keynote HD Boutique

Since its inception HD Boutique has been kicked off with a keynote speaker in conversation with *Hospitality Design* magazine's editor in chief Michael Adams. The illustrious list—Andre Balazs, David Rockwell, Todd Oldham—is joined this year by Roger Thomas, executive vice president - design for Wynn Design and Development. Having worked with the Wynn Las Vegas empire for more than 25 years, Thomas is most noted for creating the influential look of the luxury Wynn hotels—the Bellagio, the Wynn Las Vegas, and the upcoming Encore. His recent string of product lines has made his work accessible to consumers as well.

"Roger has been a longtime friend and supporter of HD," says Adams, "and in 2007 he absolutely captivated a roomful of people in his talk for our annual Young Design Professionals program at HD Expo. He was warm, funny, candid, and positively inspirational. I expect more of the same this week. It's an honor to have him as our guest."

Expect Thomas to address the art of designing a casino hotel, his own personal aesthetic, what it's like to work for a single employer for a quarter of a century, and how (as he says), one can "exceed an unlimited budget" when creating a high-end hotel.

Thomas and Adams will be in conversation this morning at 10 a.m. in Room D129.

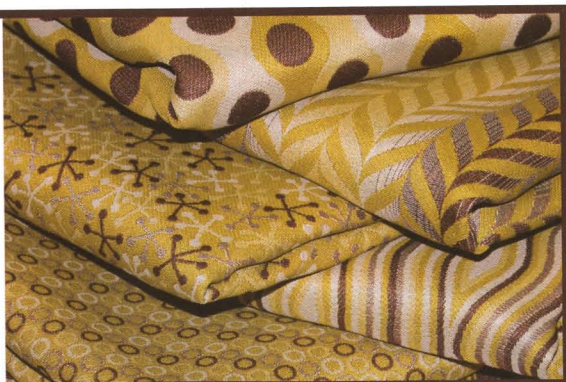
Booth# 1901
www.valleyforge.com

VALLEY FORGE
FABRICS,
INC.

FRESH fabrics are 100% recycled content with an established fabric reclamation program.

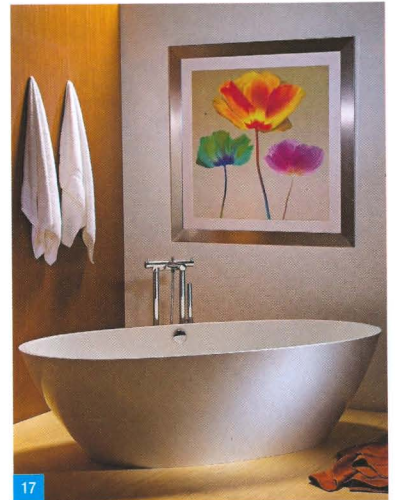


introducing the
Deborah Schwartz
collection





16



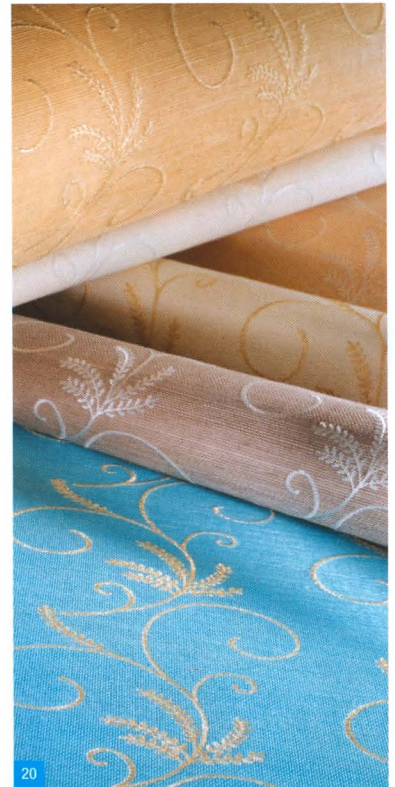
17



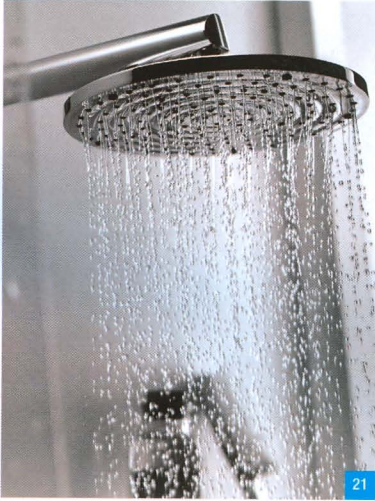
18



19



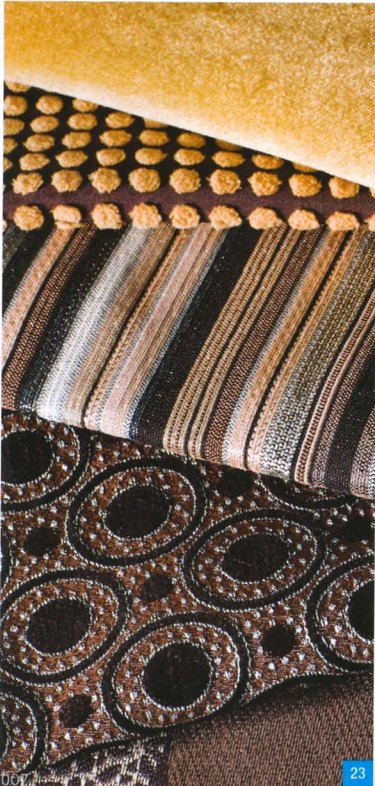
20



21



22



23



24



25

21. The Aquamax Round 21 Showerhead from **Deca** is a circular showerhead that is adjustable and is available in a wall or ceiling mount. To give hotel guests the full rain-shower experience, the bathroom product pivots from side to side. **Booth #1161**

22. **FiberBuilt Umbrellas** unveils the Aruba Umbrella. The oversized design has decorative detail and a canopy made of Sunbrella's marine-grade solution-dyed fabric. **Booth #638**

23. **Carnegie** launches the Bijou Collection inspired by ornamental and vintage jewelry. Patterns include Bangle, Bauble, Cameo, and Gem. **Booth #1610**

24. **Geo Graphic** by **Wolf-Gordon** and designed by Laurinda Spear, offers seven designs inspired by cityscapes and nature. Shown here is the mermaid design. **Booth #1243**

25. **Danze's** popular Fairmont Collection now includes a Distressed Bronze finish. The traditional-looking bathroom piece is part of a line of both kitchen and bath products. **Booth #2425**

26. **Hubbardton Forge's** Exos Wave fixture showcases formed glass held by metal bars to form a wave-like piece. Each light on the multi-light pendant are attached to its own swivel, which allows the lights to have their own rotation. The fixture is offered in many glass and finish options. **Booth #947**

27. **GranitiFiandre's** Trans Ceramica division has launched a new mosaics collection complete with metal, pebble, glass, stone, and iridescent designs. Pebbles, shown here, is premounted on either a 12-by-12-inch, 13-by-13-inch, or 14-by-12 1/2-inch format. **Booth #1300**

28. **Moore & Giles' Shark** line plays off of the Shagreen Collection with similar patterns, but with a smooth texture. Seven colors are available. **Booth #E 1417**

29. **Lather** presents two new amenity lines, Bamboo Lemongrass and Lavender Lime, shown here with bottles of hair wash, crème rinse, body wash, moisturizer, as well as body and face soap. All of Lather's packaging is 100 percent recyclable and the company uses natural and eco-friendly materials for the products. **Booth #853**

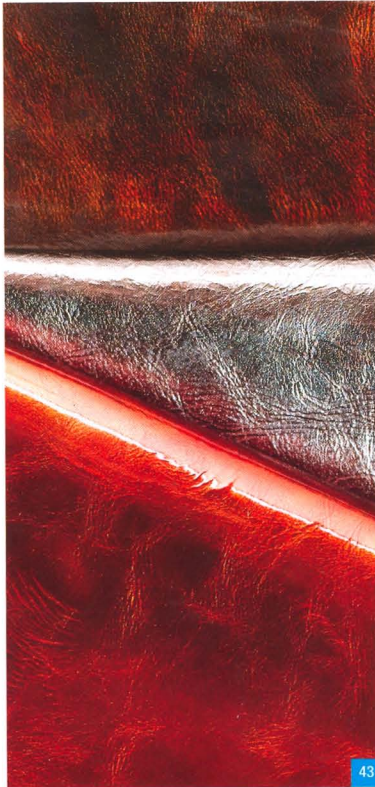
30. **S. Harris Contract** offers Lavish, a 100 percent polyester upholstery collection. The product comes in 38 lively colors. **Booth #905**



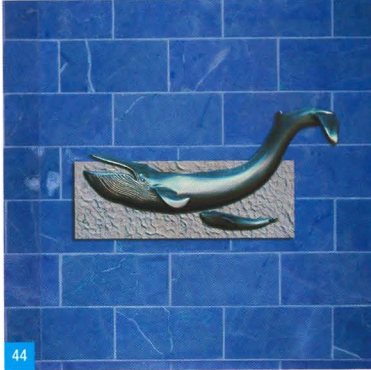
41



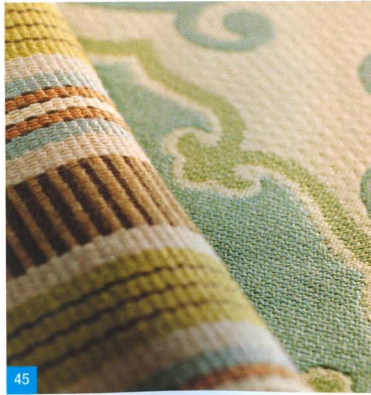
42



43



44



45

41. The M.me Butterfly floor lamp from Contardi for **Global Lighting** was designed by Gianluigi Landoni. The dramatic lamp has a glossy black, slender ceramic body with a metallic film shade lined with Fuchsia fabric. **Booth #E1107**

42. **Symmons Industries'** Naru Suite gives the bathroom a contemporary look with a waterfall flow. Inspired by the Japanese verb meaning "to become," the faucet has a clean-line design. **Booth #1221**

43. **Tiger Imports** introduces the Carrara Series of leathers featuring a marbled look. The collection was named after the Italian city known for its stone. **Booth #2126**

44. **Metaltec Innovations'** Seahorse Handles give doors both dimension and texture. The company also offers decorative tiles, murals, sculptures, and other hardware pieces. **Booth #1474**

45. **Fabricut Contract** presents the new Silver Cradle-to-Cradle certified Bella-Dura collection for indoor and outdoor spaces. The jacquard-constructed line offers fresh colors, stain resistance, and water repellency. **Booth #904**

46. The Havana Collection by **room360 by FOH** is made from sugar cane, which naturally, shows off different color variations. This amenity solution is shown here at Miami's Eden Roc. **Booth #2043**

47. **Bella-Dura Fabrics** are stain-resistant, anti-microbial, and bleach cleanable. The high-performing product is also 100 percent recyclable. **Booth #956**

48. **Mason Contract Products** introduce ONE™, a new collection of environmentally conscious motorized window treatments and controls. One of Mason's drapery tracks is shown here. **Booth #1215**

49. **Chella Textiles** introduces Amazonia Velvet, part of the new Quintessential Collection. Shown here in Moss, the cut-pile velvet showcases large-scale design, is mildew and stain resistant, and is woven in Italy. **Booth #1124**

50. The design for **Edelman Leather's** Hollywood Glamour Collection was influenced by a quilted Chanel handbag. Several textures make up the sheen line of upholstery as shown here, from top, Quilted Black Patent, Cavallini Zebra, Napoli Black Pearl, Luster Leather Mother of Pearl, City Lights Smoothie Silverini, Big Woven Aluminum, Modern Metallic Silver Wash, Shagreen Caviar, and Luxe Black. **Booth #E 2201**