

INSPIRED HOME

JANUARY * FEBRUARY 2016

The
White
Issue

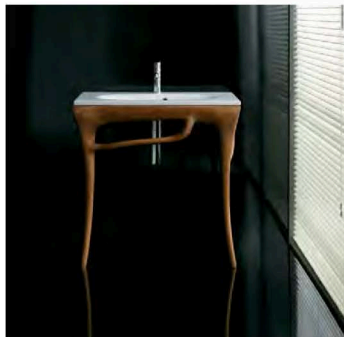


A FRESH APPROACH TO HOME & LIFE

The beauty of the bath

Artful bathrooms become a
place of tranquil respite.

Tranquility is your reality as you bathe and rejuvenate in this MTI "Solitude" tub of the Designer Collection series. Calming colors add to the relaxation experience.



↑ Designed by Antonio Pascale, this African teak wash basin and integrated sink by Galassia is sleek, organic and space saving.



↑ Graceful and beautiful, this elegant vessel basin designed by Brigid Stevens doubles as countertop and basin, saving space and adding glamour.



BY ASHLEY FERRAGUT JOHNSON
PHOTOGRAPHY COURTESY MTI,
VICTORIA + ALBERT AND GALASSIA

Bathrooms are no longer just the room down the hall where you brush your teeth and take a shower. They have evolved over hundreds of years from merely a physical space to cleanse oneself to a Zen-like refuge for relaxation and holistic healing.

There has been a major market upswing for the demand of luxurious master suites and fine piece baths, and Michael Kornowa, director of marketing for MTI Baths, has taken notice. MTI is known for their handcrafted pieces for the bathroom. The bath products in their boutique collection are so striking that they have actually trademarked the baths as art. Kornowa explains, "It looks like art, and yet our mantra is also all about developing top-tiered designs. We are not designing these tubs as art for art's sake. It's a bathing vessel that looks beautiful and at the same time delivers comfort and promotes health."

You can think of them as functional sculptures—lovely to gaze upon and an inviting place for relaxation and revitalization. The sleek lines of MTI's signature Engineered Stone baths are a combination of ground natural materials from the earth and binding agents resulting in molded stone, solid through and though. Whether free standing,



↑ Luxury and sophistication are main features in this MTI freestanding Boutique Series. The "Intarcio" features a pedestal base, constructed of Engineered Solid Stone—stone all the way through.

Bathrooms are no longer just the room down the hall where you brush your teeth and take a shower.



Life looks better from here.

We are the region's first Montessori-Based Dementia Program, a researched based method of expanding the world for adults with memory challenges.

- Increases levels of engagement
- Builds existing functions and independence
- Provides intellectual stimulation and challenge
- Research has shown less depression, anxiety and agitation



Maple View
Memory Care Community

4552 36th Avenue South
Fargo, North Dakota
701.478.8655
lifeatmapleview.com



Providing care for people with Alzheimer's, Dementia, and other memory impairments.

CALL for a tour!



→ The sophisticated MTI Boutique Collection of countersinks are a full line of fully integrated countertops and basins. The "Counter-Revolution" is largely driven by the popularity of free-standing tubs.

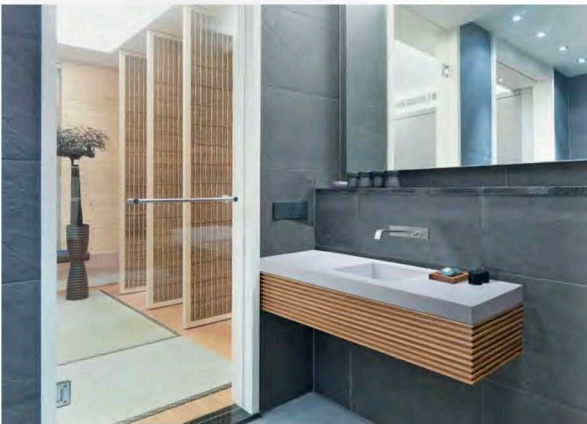
attached, whirlpool or air jetted, these tubs come in a host of styles and designs ranging from cozy and eclectic to uber-modern.

If space is hard to come by, don't fret. That does not mean you have to skimp on design and luxury.

Victoria + Albert is a British company known for their line of stunning tubs made from 100 percent volcanic limestone. Their bathroom furniture collection also features a selection of pedestal vanities with basins to create sleek bathroom-ware. Exquisitely designed and with aptly named pieces such as "Stiletto," this bathroom furniture stands delicately on slim, long legs, perfect for a small space.

In today's housing market, people are expecting artistry and glamour from their lavatory options. Consumers expect higher-quality pieces with a more spa-like feel than in years past. "The bathroom is now thought of as a place of sanctuary and quiet. The focus on the bathroom has come on very, very strong. In some cases, it is because people want the occasional soak. I think people are looking for that private space to be able to shut the world out for a few minutes," Kornowa explains.

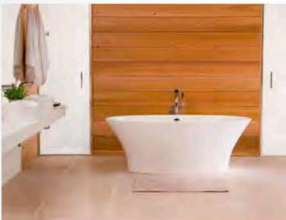
MTI has a new, innovative way to shut out that busy, bustling world—The Stream Bath. Instead of using jets or bubbles, this new technology utilizes vents to create a flow



of water that mimics a babbling brook or a natural stream in the woods. MTI illustrates its ingenious, innovative new tub thusly: "Imagine the soft sound of flowing water, the gentle current that caresses the body. The essence of that organic experience has been captured and brought into the bathroom as an exceptional hydrotherapy option that is gentle enough for all bathers to enjoy." The Stream Bath not only offers a unique physical effect on the body but a sensory experience for the mind as well. You can actually hear the relaxing trickling sound of the water like you'd get from a natural spring on a mountainside, offering a soothing form of auditory therapy. Ribbons of water are created, flowing around

← Peace and calm soothe your body and soul as the gentle currents of water flow against your body in the MTI Stream Bath™. Directional vents provide gentle movement of water created by a whisper-quiet pump.

↓ The "Ionian" bath by Victoria + Albert is a longer soak tub, which provides a generous angle of recline.



the body without any disturbances on top of the water. The stream technology is available in most of MTI's drop-in tubs.

Regardless of whether the tub is a whirlpool, stream or simply a still bath, taking a soak in a purposefully designed bathroom is a wonderful way to free your mind and nurture your soul. Don't be afraid to create a bold, beautiful and therapeutic bathroom with the tub as a focal point. Relaxing has never looked so good. ✨

To see these products locally, visit Waterfront Kitchen & Bath, 1817 Great Northern Drive, Fargo, and Ferguson Bath, Kitchen & Lighting Gallery, 1602 45th St. N., Fargo.