

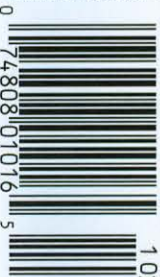
# INTERIOR DESIGN<sup>®</sup>

NUMBER 8



*in the swim*

DISPLAY UNTIL 09/08/14



\$9.95

OCTOBER 2014

109



text: *edie cohen*  
photography: *art gray*

# interior landscape

Garden  
designer Sean  
Knibb takes  
on his first  
hotel, the Line  
in Los Angeles





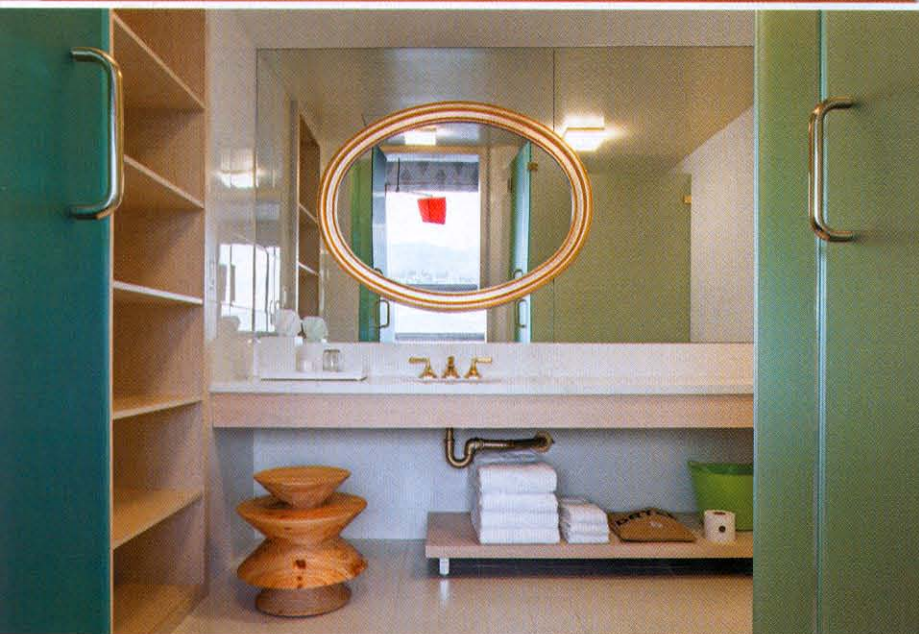


#### PROJECT TEAM

MICHAEL SATOH; KERIAN JARRY; KNIBB DESIGN; MDR ARCHITECTS; ARCHITECT OF RECORD; FOLKLOR; GRAPHICS CONSULTANT; BRANDOW & JOHNSTON; STRUCTURAL ENGINEER; GLUMAC; MEP; BAJA MILLWORK; WB POWELL; WOODWORK. SHAW & SONS; CONCRETE CONTRACTOR; KLEWIN CONSTRUCTION; GENERAL CONTRACTOR. PWS PURCHASING; PURCHASING AGENT.

#### PRODUCT SOURCES

**FROM FRONT MAHARAM:** BANQUETTE UPHOLSTERY (LOBBY). **DUNBAR FURNITURE:** CUSTOM BANQUETTES (LOBBY), SOFAS (SUITES). **TILE ROOM L.A.:** WALL TILE (LOBBY), FLOOR TILE (LOBBY, RESTAURANT). **VALLEY FORGE FABRICS:** WINDOW SHADE FABRIC, BACKING (SUITES, GUEST ROOM). **KNOLL THROUGH HIVE MODERN:** TABLE (LOBBY). **BLÅ STATION; EMECO:** CHAIRS (RESTAURANT). **CERTAINTED CORPORATION:** CEILING SYSTEM. **THERAPEDIC INTERNATIONAL:** MATTRESSES (GUEST ROOMS). **VOGEL DESIGN:** CHAIRS (CAFÉ). **CHENG MENG FURNITURE:** TABLES, VICTORIA + ALBERT: TUB (BATHROOM). **WATERMARK DESIGNS:** TUB FITTINGS, SINK FITTINGS. **DUPONT:** COUNTER MATERIAL. **THROUGH MATTA:** OTTOMANS (SUITE). **THROUGHOUT ALARWOOD:** CARPET, RUGS. **ASTEK:** CUSTOM WALLPAPER. **BEN JAMIN MOORE & CO.:** PAINT.



making stools by compressing T-shirts in a baling machine," he explains. Here, they're dyed cobalt, indigo, or pale blue-gray and arranged in overlapping layers.

Below the soffit, azure-stained plywood banquettes zigzag between structural columns. The angles create nooks that are great for groups—and equally fine for semiprivacy if a guest working alone craves an alternative to a lonely room. Single seats are iterations of the classic wing chair, covered in burlap with orange piping.

Axminster rugs with frayed edges and a 1930's iron chandelier define islands in the sea of space. The real anchor, however, is the bar at the back. It's another stained-plywood construction, faceted, with a hefty black marble top.

The wall behind the bar separates the lobby from Choi's restaurant Pot, double entendre intended. There's a dried marijuana leaf on a wall at the entry, while the kitchen prepares hot-pot staples of Korean cooking. Knibb designed tables with individual cooktops to help make that happen. He went off-menu, though, with the delicate wall decor, dried flowers pressed into the plaster. "It was the only way I could bring plants into a partly below-grade environment," he says.

There's no shortage of greenery or sunlight up at Commissary, the poolside café. Housed in a glass structure, it's essentially a greenhouse complete with lighting affixed to eucalyptus branches and a long pine-topped table fashioned after an Edwin Lutyens design. Food offerings focus on fruit and vegetables, garden-fresh naturally. 🍌

