

K+B B

DESIGN + INNOVATION + LIFESTYLE

KBIS Show Issue

Major Showroom revives
outdoor living area

KITCHEN AND BATH BUSINESS / FEBRUARY 2014

WWW.KBBONLINE.COM \$10 U.S.

THE OFFICIAL SPONSOR OF

KBIS 2014

victoria ⊕ albert®

volcanic limestone baths

Pure modern nostalgia

We are constantly exploring new designs to add to the Victoria + Albert range to keep us at the forefront of bathroom innovation. This year we present 'new traditional'. Timeless design combining enhanced luxury with classic styling. Crafted from volcanic limestone and resins which are polished to a lustrous sheen to ensure guaranteed quality and an ultimate bathing experience.

 new
traditional
old style with new lines

For further details and to locate your nearest dealer visit: www.vandabaths.com/drayton

Circle No. 18 or visit kbbonline.com/freeinfo

Featured product: Drayton

What's Hot in Kitchen Storage and Bathroom Vanities & Sinks



The compact Conversation Kitchen Island with Seating from **Hardware Resources** and designed by Jeffrey Alexander offers furniture-style seating, flexible storage and extra counter space for dining and meal preparation. The slab-front island in a hand-applied espresso finish features two working drawers, a removable center wine rack and adjustable shelves on one side with seating on the other. Pricing for the island base, top and two stools is \$2,195. **Circle No. 209** or visit kbbonline.com/freeinfo

Barclay's Capri above-counter, mid-sized, circular basin measures 14 inches in diameter with a 6-in. base. It is made of fire clay – a high-impact ceramic known for its durability and stain resistance. **Circle No. 210** or visit kbbonline.com/freeinfo



Boffi's Duemilaotto System features tall units that can be equipped with new drawer units and pullout shelves, regular shelves and internal lights. A new sliding and opening mechanism on the double doors allows them to open one on top of the other and then slide together. Hinged, rotating and side-recessed doors are part of another opening system offered with the units. In addition to the tall kitchen units, new laundry modules with compartments for washers and dryers are also available that feature such elements as detergent holders and laundry baskets. **Circle No. 211** or visit kbbonline.com/freeinfo



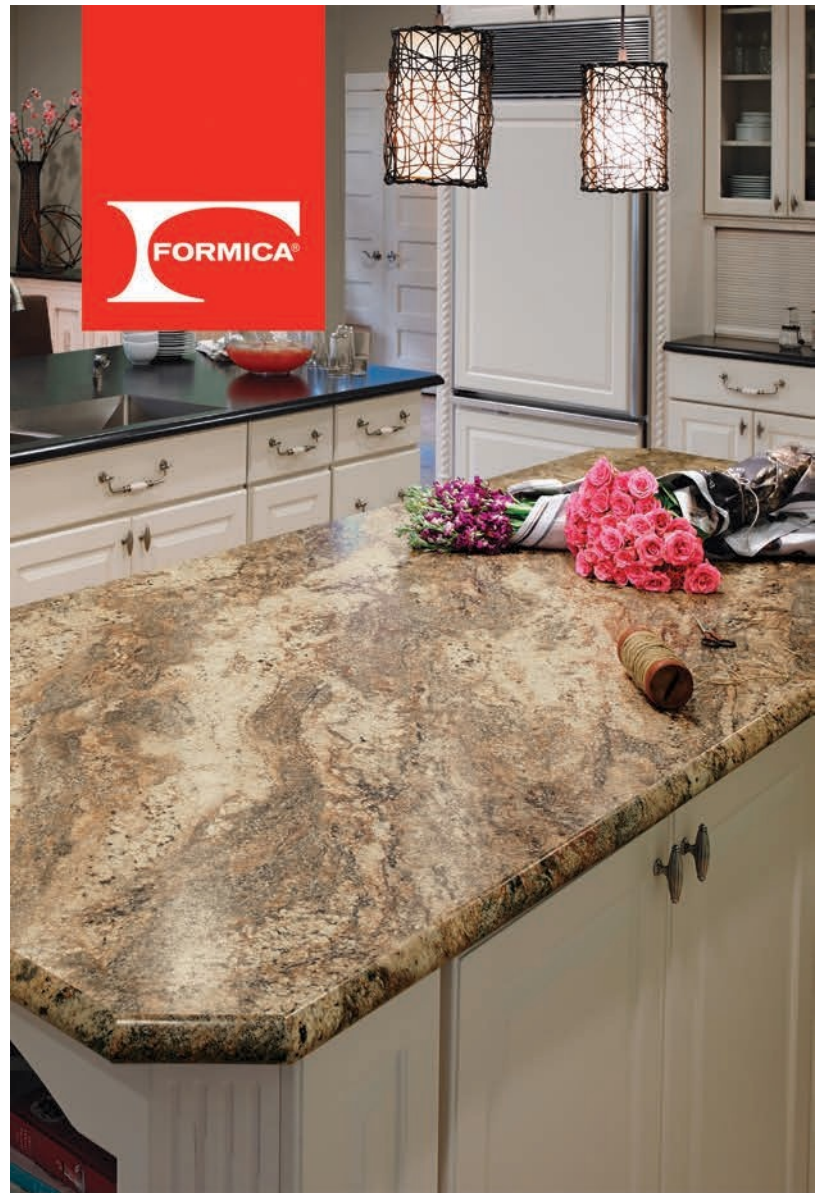
Ronbow's Newcastle vanity offers classic design and elegant style and is available in a variety of sizes with multiple drawers. It features full-extension drawers with dovetail construction and a detailed finish throughout the interior. A matching mirror or medicine cabinet is optional, and the vanity is available in a café walnut, white (pictured) and vintage honey finishes. **Circle No. 212** or visit kbbonline.com/freeinfo





Victoria + Albert's Amalfi 55 Basin is designed to complement the company's Amalfi freestanding tub with its rimless, vessel design. The basin is made with the company's Englishcast material, a finely ground volcanic limestone mixed with resin and cast in one seamless piece, and is hand finished to provide a glossy white, durable, easy-to-clean solid surface. Amalfi retails for \$790.

Circle No. 226 or visit kbbonline.com/freeinfo



180fx by FORMICA GROUP

CLOSING THE GAP
BETWEEN REAL AND FAUX



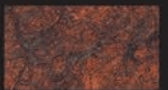
NEW 3546-46
River Gold



NEW 3547-RD
Lapidus Brown



NEW 3548-RD
Magma Black



NEW 3549-RD
Red Dragon

For additional information about 180fx[®] by Formica Group and/or other Formica[®] Brand Products visit www.formica.com or call 1-800-FORMICA[™].

Visit Formica Corporation / Booth # N1063 / 2014 KBIS



Xylem's floating Sella vanity – crafted in Spain – mounts to the wall and is available in high-gloss White Luxe and Metallic Grey Luxe finishes. The vanity is designed to open up the bathroom space and provide ample storage with two drawers – the upper with a U-channel cutout for plumbing. Sella also offers full-extension, carrier-style glides and refined hardware and retails for \$1,195. **Circle No. 227 or visit kbbonline.com/freeinfo**

Circle No. 31 or visit kbbonline.com/freeinfo



Liebherr's WS 17800 Vinidor wine storage unit is designed to hold a large supply of wine or champagne and features vibration-free compressors, double-glazed doors, forced air cooling and a fresh air supply via activated charcoal filters. The unit offers wooden shelves on pullout rails and an accurate electronic control system with touch technology and a digital temperature display. **Circle No. 249 or visit kbbonline.com/freinfo**



Effeti's L'Evoluzione kitchen system features electronically controlled drawers and doors and offers increased functionality and a more natural flow from the kitchen into the living area. The system is available with the company's branded drawer organizers, as well as in 11 kinds of wood and a variety of glossy laminates and lacquers. Custom colors and finishes are also available. **Circle No. 248 or visit kbbonline.com/freinfo**



The WhisperControl Condensation Sensor from **Panasonic's** Eco Products Division is a wall-mounted humidity and temperature sensor that anticipates condensation and automatically turns on ventilation fans to remove humid air. The sensor can function in every climate zone to control mold and mildew, is available in two models and features a blue LED light and a manual on/off fan and light switch. Both models are offered in white and light almond. **Circle No. 250 or visit kbbonline.com/freinfo**



Lenova's Ledge prep sink won one of *Interior Design's* Best of the Year Awards for the Kitchen Fixtures category last December. Ledge is available in three models, each with a 90-degree ledge pressed into the front and back of the sink that converts it to a food prep center when it is accessorized with an optional stainless steel colander, wood cutting board or roll-up stainless steel grid drainer. The collection includes two 33-in. x 22-in. sinks and one single and one double bowl, and the sinks can be undermounted or mounted as drop-ins. **Circle No. 251 or visit kbbonline.com/freinfo**



The Crescent High Stool from **Thos. Moser** is topped with a backless, steam-bent seat and can be accessed from the front, back or either side. The lightweight, durable stool can be tucked under a counter when not in use, and its ash legs provide a contrast to cherry or walnut seats. **Circle No. 252 or visit kbbonline.com/freinfo**



The **Duravit** Sound System can stream music from any Bluetooth-compatible device via wireless speakers that are tucked under the LED mirrored cabinets. The system has been tailored to the unique acoustics of a bathroom with its sound-reflective materials and can register up to eight different devices. The module has a 2.1 system with a total continuous output of 35 watts; two five-watt, flat-drive speakers; and an additional 25-watt active high-end woofer with passive radiator.

Circle No. 257 or visit kbbonline.com/freeinfo



The ADA-compliant Sento single-hole faucet from **Graff** is available in a variety of finishes, including polished chrome, Steelnox, olive bronze, polished nickel, Architectural Black and Architectural White. Optional appliances include various drain assemblies and a decorative trap, and the faucet retails for \$499. **Circle No. 258** or visit kbbonline.com/freeinfo



The DP216 drawer pull from **Doug Mockett** features a smooth arcing texture with soft grain lines, and its top and rounded edges are hollowed out to form a comfortable grip surface on the pull's backside. Although the pull has a distinct look and feel, it is able to blend seamlessly with the company's existing collection.

Circle No. 259 or visit kbbonline.com/freeinfo



New Haven, a new cabinet door style from **Wellborn Cabinet**, can complement a range of designs and will be available in the full overlay for the company's Premier Series, Elegant Bath Collection and Estate Custom Collection; and in inset for the Elegant Bath Collection and Estate Custom Collection. The new style is offered in cherry, hickory, oak and maple, and a slab drawer front is standard on the door style with a classic drawer front option available. **Circle No. 260** or visit kbbonline.com/freeinfo

■ **GEBERIT**

In a minute



A bathroom becomes a more special place because of Geberit. More roomy. More aesthetic. Just more. Geberit installation technology is securely located behind the wall. Where it should be. Spend all the extra minutes you want, as long as you know Geberit is behind the wall. Call 866/787-3924 for your designer's kit or visit → geberitnow.com.



Circle No. 35 or visit kbbonline.com/freeinfo



Second Life

A cramped bathroom transforms into space reminiscent of a high-end hotel

By Holly O'Dell



Accented by chrome fixtures, the sleek tub from Victoria + Albert provides a relaxing place to enjoy the natural surroundings

At first glance, it might have looked like a significant design challenge. A Potomac, Md., master bathroom was in the midst of a renovation – a cramped, compartmentalized renovation at that. Interior walls partitioned the space and blocked in a Jacuzzi tub. His-and-hers vanities were built, but they were undersized, as was the shower. Closets further cluttered the room.

The home's new owner knew he needed to finish the job, but this wasn't just an average project. The man had grown up in the house and even helped his father build parts of it, and now he had inherited the property. He returned from living abroad with his wife and children and began the bathroom overhaul with a call to Jennifer Gilmer Kitchen and Bath in Chevy Chase, Md.

Despite the confines of the partial renovation, Lauren Levant Bland, a designer with the firm, immediately spotted the possibilities to create an open, modern and well-designed master bath. "We decided to remove everything and start with a clean slate," she said.

Working within the existing footprint of the bathroom, Bland aimed to create a space that reflected the elegant taste of her well-traveled clients.

"From a style standpoint, they wanted a space that was restful, serene and had a certain level of sophistication to it," she said. "We were going for a little bit of glamour seen in high-end hotels."



For the shower enclosure and shelves, Bland selected Starphire, an ultra-clear glass that does not have the green cast typically associated with thick regular glass panels.



Dark, clean-lined espresso cabinets, paired with white quartz countertops, form the base of this chic redesigned master bath and provide plenty of storage.

To that end, Bland established a palette of colors and materials indicative of a posh retreat. A mid-tone ceramic tile floor provides a quiet base, balancing the dark espresso-stained cherry wood cabinetry and crown molding while allowing the white, pristine countertops and sleek soaking tub to pop.

"The impact of the contrast between the dark and light creates drama," said Bland, who used a neutral flat-finish paint on the walls to support the tones of the tile and cabinetry.

In the shower, she used three types of tile: a white wall tile boasting a cubic texture that subtly captures light, a deep chocolate tile on the smaller wall that gives a nod to the cabinetry and floor tile that connects the shower to the rest of the bathroom. Despite some early concerns from the client on the varied colors, shapes and sizes, "the solution was successful because each tile had a reason or purpose," said Bland.

Perhaps the most notable feature of all is reserved for only the most exclusive resorts: a contoured tub set against a seamless picture window that offers private views of the surrounding wilderness. Bland positioned the tub and window directly across from the entrance of the bathroom to make a strong statement.

"We wanted a tub that was clean and sleek but also romantic and inviting," she said. "The form of it was very important visually and ergonomically so that looking at it was just as much fun as bathing in it. It is like a piece of sculpture in the bathroom."

Design with Purpose

The redesign emphasized function as much as it did lavishness. Because of the bathroom's generous size, Bland was able to incorporate ample built-in cabinetry. Both sides of the his-and-hers vanities feature storage for equipment, with a dedicated appliance garage housing items such as the hair dryer and curling iron on the larger hers side. The area also features a lower vanity for make-up application and a tall linen closet accommodating pullout hampers for dirty linen.

Bland also prioritized high-quality, low-maintenance materials throughout the redesign. The client originally wanted natural marble countertops, but Bland persuaded the couple to consider engineered quartz instead.

"In the end, the engineered stone turned out to be the right choice because it was simple, consistent and maintenance free," she said. "The homeowner doesn't have to worry about staining anything or sealing the counter against moisture as you would with marble. And it helped the bathroom maintain its semi-modern feel."

For the cabinetry, Bland selected a manufactured product rather than a custom, hand-finished option because the former holds up better against the heavy use, moisture "and all the things that bathrooms come in contact with, just like kitchens," she added. Meanwhile, the volcanic limestone tub is designed to retain heat well, withstand wear and tear and be cleaned easily.

The lighting scheme includes dimmable recessed lighting around the perimeter that illuminates surfaces and emphasizes the bathroom's beautiful design elements, as well as eye-level task lighting at the vanity mirrors. In fact, the sconces on either side of the espresso-framed mirrors highlight one of the more surprising features of the space: a shimmering glass tile accent.

"Bringing in the sparkly glass tile offered a way to lighten the area," said Bland. "It became the exclamation point of the bathroom." ■



The sparkling glass tile accents around the vanity mirrors enhance the sophistication of the bathroom.



SOURCES

Designer: Lauren Levant Bland, Jennifer Gilmer Kitchen and Bath, Chevy Chase, Md., www.gilmerkitchens.com; **Photographer:** Bob Narod; **Bathtub:** Victoria + Albert Baths; **Cabinetry:** Decor Cabinet Company; **Countertops:** Caesarstone; **Lighting:** Hudson Valley; **Shower Enclosure and Shelves:** Starphire; **Sinks:** Kohler; **Tile and Plumbing Fixtures:** Porcelanosa for Tile; **Toilet:** Kohler