

# K+B B 60 Years

DESIGN + INNOVATION + LIFESTYLE



## Historic Master Bath Revived

**KBIS in Review**

KITCHEN AND BATH BUSINESS / FEBRUARY/MARCH 2015

WWW.KBBONLINE.COM \$10 U.S.

THE OFFICIAL SPONSOR OF

# KBIS

# Best in Show!

*KBIS celebrated a growth in attendance with another very good year*

Section by Chelsie Butler & Erinn Waldo

More than 500 exhibitors took part in the three-day show. The 2015 event also saw more than 26,000 qualified buyers at KBIS alone – a nine percent growth in verified attendance. Adding to this year’s program was KBISNeXT, an additional 500,000 square feet in the South Hall that offered thought-provoking, on-floor programming and exhibit space. The area also featured the FutureHaus Kitchen presented by Virginia Tech.

Other KBIS offerings included the National Kitchen & Bath Association’s Voices From The Industry educational programming with more than 90 sessions in 11 conference blocks, as well as presentations from the 2015 30 Under 30 award recipients. Industry winners in the Best of KBIS, NKBA Design Awards, Innovation Booth Awards and Innovative Showroom Awards competitions were honored during the three-day



*The NKBA’s 2015 Executive Committee cutting the ribbon on day one*

event, and peers were able to network and enjoy dancing and music at The Party and The Bash.

In collaboration with the National Association of Home Builders (NAHB), KBIS co-located with the International Builders’ Show (IBS) for the second-annual Design & Construction Week. Two additional design and construction events – the winter 2015 Las Vegas Market and The International Surface Event – took part in this year’s event. The



*The busy Electrolux Major Appliances booth*



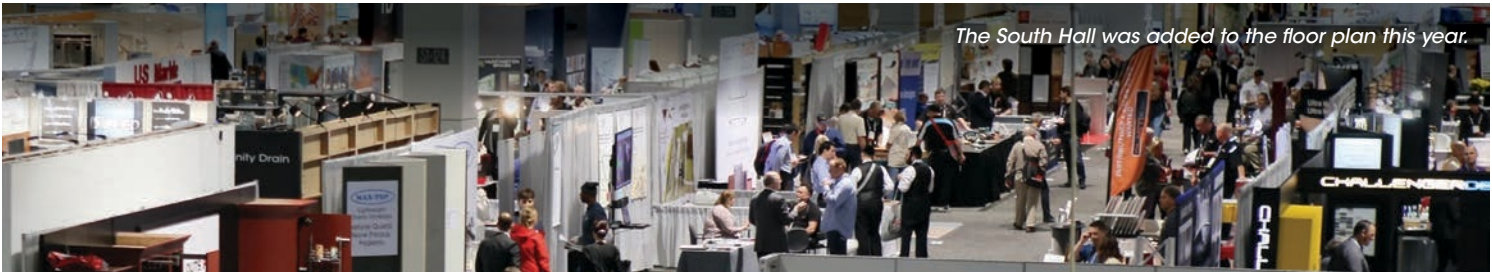
*The Virginia Tech FutureHAUS kitchen*



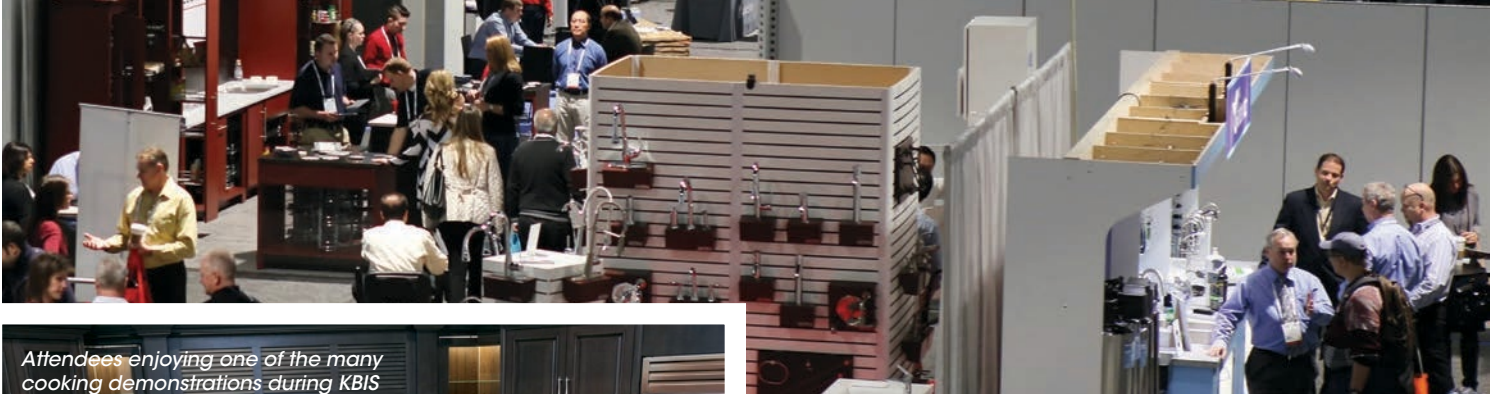
*Liebherr's refrigeration*



*A Victoria + Albert tub in a Las Vegas penthouse*



*The South Hall was added to the floor plan this year.*



*Attendees enjoying one of the many cooking demonstrations during KBIS*

International Window Coverings Expo also continued its participation. From ozone faucets to even more specialized storage and technology options, the trends and innovation on the show floor more than met attendees' expectations.

"Once again, KBIS and Design & Construction Week was a great opportunity for Moen to share its latest thoughtfully designed products and innovations with the kitchen and bath industry," said Laura Ostenkamp, senior manager, marketing communications, at Moen.

"We were honored to be exhibiting among so many exceptional brands at KBIS this year," said Josef Steigmiller, vice president, Liebherr Refrigeration, The Americas. "It was inspiring to see the the architect

# KBIS & IBS Product Peek

The **Miele** Range, shown here with gas and the M Pro Dual Stacked Burner System, enables each of the burners to both simmer and sear. The burners are available in different size and power configurations and are meant to align with the company's Generation 6000 built-in appliances. **Circle No. 200 or visit [kbbonline.com/freeinfo](http://kbbonline.com/freeinfo)**



**Florida Tile's** new tile program, Thinner by Florida Tile, features a broad mix of thin tile products in three lines with as many as five sizes. Thicknesses range from 0.1 inches to 0.2 inches and are created to easily install over a previous floor tile. **Circle No. 201 or visit [kbbonline.com/freeinfo](http://kbbonline.com/freeinfo)**



**Kohler** expands its integrated toilet offerings with the Karing integrated one-piece toilet, which utilizes a tankless design with integrated bidet functionality. Along with soft curves and simple lines, Karing boasts an intuitive touch-screen remote, personalized setting, water-conserving flush and a nightlight. **Circle No. 203 or visit [kbbonline.com/freeinfo](http://kbbonline.com/freeinfo)**



The 21C Storage System from **Häfele** draws inspiration from European storage with its flexible rearrangement abilities. With 21C, users can easily move and reconfigure the cabinetry into a new space. Complete with wardrobe, drawers, shelves and upper cabinets, the system offers endless possibilities for customized storage. **Circle No. 202 or visit [kbbonline.com/freeinfo](http://kbbonline.com/freeinfo)**

**Scotsman Ice Systems**, known for its chewable ice in fast-food restaurants, now offers the same product for residential with its Brilliance Nugget ice machines. These 15-in. ice machines fit under the counter in a kitchen, bar or outdoor setting. Producing more than 80 pounds of soft ice in 24 hours, Brilliance Nugget features user-friendly control panels, lighted bins and self-closing doors. **Circle No. 204 or visit [kbbonline.com/freeinfo](http://kbbonline.com/freeinfo)**



The Beadboard door style from **Brown Jordan Outdoor Kitchens** looks like wood, but it is actually metal – manufactured with the interior section composed of 1.5-in.-wide stainless steel panels. The doors are available in a variety of painted or wood finishes. **Circle No. 205 or visit [kbbonline.com/freeinfo](http://kbbonline.com/freeinfo)**



The Ion series of direct-vent, gas fireplaces from **Heatilator** is available in square, vertical and horizontal models. Its slim design is a mere seven inches deep, and it can be recessed into a wall or installed flush – making it easy to add a fireplace to spaces like bathrooms, entryways and kitchens. Two decorative front options are offered, and ambient backlighting is available in multiple colors. The Ion produces up to 24,000 BTUs of heat output, sending radiant heat directly into the room. **Circle No. 206 or visit [kbbonline.com/freeinfo](http://kbbonline.com/freeinfo)**



The Cattura downdraft from **BEST**, which will be available in July, is a thin, sleek and retractable unit that precisely captures cooking fumes with its patented VERTEX Complete Capture Design. Dual inlet ports on the face and top of the downdraft take in emissions, eliminating odors and volatile organic compounds to improve indoor air quality. When fully raised, the unit reaches 18 inches, and its Heat Sentry technology automatically detects excessive heat and adjusts the fan speed accordingly. Price starts at \$1,475. **Circle No. 207 or visit [kbbonline.com/freeinfo](http://kbbonline.com/freeinfo)**

**Bosch's** compact laundry pairs are available in three series – 300, 500 and 800 (shown) – and cater to the growing trend of living in smaller spaces. The compact units are stackable, and the ventless condensation dryers require no ducting to reduce the overall footprint. The pairs will be available in July. **Circle No. 208 or visit [kbbonline.com/freeinfo](http://kbbonline.com/freeinfo)**



From **Brizo**, the Rook Bath Collection draws from its namesake chess piece with a blocked shape and crisp octagonal details. The collection includes single-handle and widespread lavatory faucets with channel or closed spouts, a channel-spout vessel lavatory, as well as cross or lever handles on all two-handle products. Available in fall 2015, the Rook is the first to offer the luxe nickel and matte black split finish for a masculine, modern edge. **Circle No. 209 or visit [kbbonline.com/freeinfo](http://kbbonline.com/freeinfo)**



**Atlas Homewares** has introduced a new slate finish that translates as a gray-toned metallic with a light sheen and subtle grain. The finish will be available in collections like Ergo, Nobu, Sutton Place, Browning, IT and U-Turn, and options range from appliance pulls to knobs and handles of all sizes and shapes. **Circle No. 210 or visit [kbbonline.com/freeinfo](http://kbbonline.com/freeinfo)**



Inspired by the organic shapes found in nature, the Tesla Bath Collection from **Delta** was created with urban high-rises in mind. Boasting the company's first joystick lavatory faucet, the collection also includes technology that activates the flow of water with a touch anywhere on or around the vicinity of the faucet. The collection is slated to begin shipping this spring. **Circle No. 211 or visit [kbbonline.com/freeinfo](http://kbbonline.com/freeinfo)**





**Liebherr** displayed a variety of features at KBIS, including BioFresh compartments that help food retain its vitamins, aroma and appearance and shatter-proof and scratch-resistant GlassLine storage shelves, which feature a satin finish trim and are completely adjustable. The company's Dual Refrigeration System caters to the refrigerator and the freezer with separate silent cooling systems that ensure accurate temperature and humidity control. **Circle No. 212 or visit [kbbonline.com/freeinfo](http://kbbonline.com/freeinfo)**

The Notch line of kitchen and bar prep faucets from **Moen** feature pulldown spouts and a 45-degree angled handle. A single-hole installation fits against solid surface and natural material countertops. The three-function pulldown spray wand boasts the company's Reflex system, which allows it to put itself away through a smooth, secure operation. The line is available in a variety of finishes, including chrome, oil-rubbed bronze and Spot Resist Stainless. **Circle No. 213 or visit [kbbonline.com/freeinfo](http://kbbonline.com/freeinfo)**



**Quick Drain USA** featured its stainless steel, low-profile channel drain systems from Michael Graves. New lines include Stream and Cosmo, and all the lines are available in brushed and polished stainless steel, as well as a new oil-rubbed bronze finish. The ADA-approved, easy-to-install drains are available in standard lengths and custom lengths up to 100 inches. **Circle No. 214 or visit [kbbonline.com/freeinfo](http://kbbonline.com/freeinfo)**



The Whitney Recessed door style from **Wood-Mode** – shown here with a Pantry Pullout – is a 1-in.-thick design with a flat, recessed center panel. It is available in a variety of wood species, including cherry, maple, oak, quarter-sawn red oak and walnut. **Circle No. 215 or visit [kbbonline.com/freeinfo](http://kbbonline.com/freeinfo)**



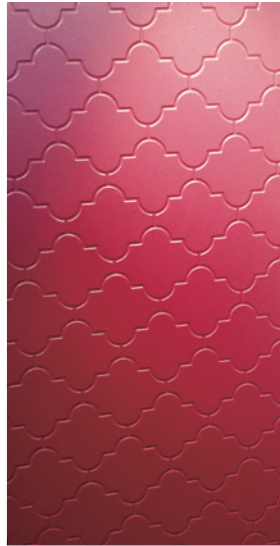
The BLUMOTION silent soft-close system from **Blum** is built into many of the company's products and can easily be added on to other items, such as a CLIP top and COMPACT hinges. The system adapts to various closing speeds, and an overload safety feature protects the system from damage through use. **Circle No. 217 or visit [kbbonline.com/freeinfo](http://kbbonline.com/freeinfo)**



**Daltile's** River Marble is a ColorBody porcelain tile that emulates a marble look with intricate details. It is available in five nature-inspired colors and in four plank and rectangular sizes (12x36, 8x36, 6x24, 12x12). Matte and polish surfaces inspire a variety of design opportunities, and the collection will be available March 30. **Circle No. 216 or visit [kbbonline.com/freeinfo](http://kbbonline.com/freeinfo)**

**ATI's** MirroFlex is a decorative thermoplastic panel with high impact, chemical, abrasion, stain and fire resistance. It is shown here in a Moroccan pattern in a merlot finish and can be used on walls, ceilings, backsplashes and trim.

**Circle No. 224 or visit [kbbonline.com/freeinfo](http://kbbonline.com/freeinfo)**



**Lenova's** Ozone collection of faucets feature water-air patented technology that infuses ozone directly into the water through a chamber in the spout. The process creates ozonized water that is safe to drink and can be used as a disinfectant. Ozonized water can remove more than 99 percent of the most common bacteria and pesticides on food, hands and kitchenware. The collection includes six styles of bath or kitchen faucets in brushed nickel or brushed chrome finishes.

**Circle No. 225 or visit [kbbonline.com/freeinfo](http://kbbonline.com/freeinfo)**



**Wellborn Cabinet** displayed a variety of cabinetry and kitchen styles in its booth, including this organizational storage unit. This demi tall cabinet is low enough for children to reach, and swing-out shelves eliminate having to reach into the back of the unit.

**Circle No. 227 or visit [kbbonline.com/freeinfo](http://kbbonline.com/freeinfo)**

The Transcend cabinet hardware collection from **Top Knobs** is composed of 33 different shaped products in five series and is available in brushed satin nickel, polished chrome, polished nickel, sable and umbrío finishes. Podium features strong, angular-shaped pulls and square knobs; Ascendra has smooth, straight, bar-shaped pulls; Contour "contours" to the curves of your hand; Spectrum is six-sided, curved-shaped pieces; and coordinating cabinet latches round out the collection.

**Circle No. 226 or visit [kbbonline.com/freeinfo](http://kbbonline.com/freeinfo)**

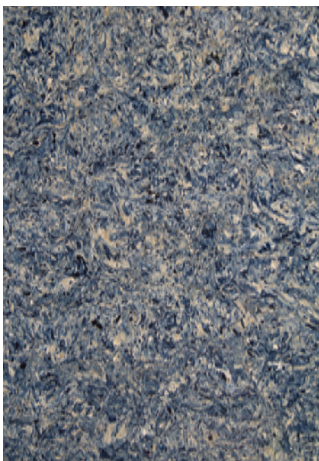


**ROHL's** Suburban Splendor Water Appliance was designed for a busy family in mind and is an exact blend of function and charm. Every component, including the filter faucet, ensures an ongoing supply of fresh, clean water. A two-bowl Allia Fireclay Sink features extra-deep capacity and durability, and the coordinating wire grid adds protection. Rounding out the collection is the Cinquanta Single Lever Country Kitchen Faucet.

**Circle No. 229 or visit [kbbonline.com/freeinfo](http://kbbonline.com/freeinfo)**

**Cosentino** introduced the Influencer Series, a prototype color collaboration designed with the Silestone Trendspotters. Albedo by Kerrie Kelly (shown) is inspired by the moon's reflectivity and plays with the natural movement of craters and cloud patterns using deep navy, blue and black hues. Each prototype color was previewed at KBIS for input from architects, builders and contractors.

**Circle No. 228 or visit [kbbonline.com/freeinfo](http://kbbonline.com/freeinfo)**



# What's Hot in *Bathtubs and Kitchen Lighting*



**Meyda Custom Lighting's** Chandel-Air features an abstract hilltop design on silver mica with hardware and accents depicted in a silver vein finish. Combined with a ceiling fan, Chandel-Air includes eight inner lights for decorative illumination, four uplights for ambience and four downlights for task lighting. In warmer environments, the fixture pushes down air to keep the space cool, and in cooler seasons the fan is reversed to pull the room air toward the ceiling and push the warm air down. **Circle No. 240** or visit [kbbonline.com/freeinfo](http://kbbonline.com/freeinfo)

Made of hand-blown Pyrex glass, the La Paz ceiling chandelier from **Iris Design Studio** uses small shades that contain halogens and LED capsules to illuminate a modern space. The gold cables are custom braided, and the top plate is gold leaf. The suggested retail price is \$2,450. **Circle No. 241** or visit [kbbonline.com/freeinfo](http://kbbonline.com/freeinfo)



The Newton Bathtub from **Maison Valentina Luxury Bathrooms** offers a futuristic tone with overlapping black lacquer brass spheres. Finished with high-gloss varnish, the 35-in.-deep bathtub also boasts gold-plated spheres on the base. **Circle No. 239** or visit [kbbonline.com/freeinfo](http://kbbonline.com/freeinfo)



**USAI Lighting** expands its collection of LED downlights with the BeveLED mini. Small but powerful, BeveLED mini lets off more than 1,150 lumens at 20 watts from a 1.5-in. optical aperture. The fixture also meets LEED certification criteria and offers multiple reflector and lens options. **Circle No. 242** or visit [kbbonline.com/freeinfo](http://kbbonline.com/freeinfo)



From **i-lighting**, the new line of ilumina undercabinet lighting uses the company's LED Lighting Simplified technology to create uplighting and downlighting. Each system's micro connectors plug together to ensure easy installations, which can be achieved in half the time of traditional lighting and with near-invisible results. Available with either clear white or warm yellow LEDs, the lighting is also designed in 0.4-in. strips for task lighting applications and 0.2-in. strips for placement as accent lighting on toe kicks, shelving, display cases and overhangs. **Circle No. 244** or visit [kbbonline.com/freeinfo](http://kbbonline.com/freeinfo)



**WAC Lighting** introduces the Niveous LED Pendant, which uses multiple LEDs for an evenly illuminated globe. Using only 14 watts, Niveous provides a light output of up to 715 lumens and boasts a rated life of 70,000 hours. With its three 12-in. and one 6-in. support rods, the fixture can be used in a wide range of interiors. The hardware and support rods are available in white and brushed nickel finishes. **Circle No. 243** or visit [kbbonline.com/freeinfo](http://kbbonline.com/freeinfo)

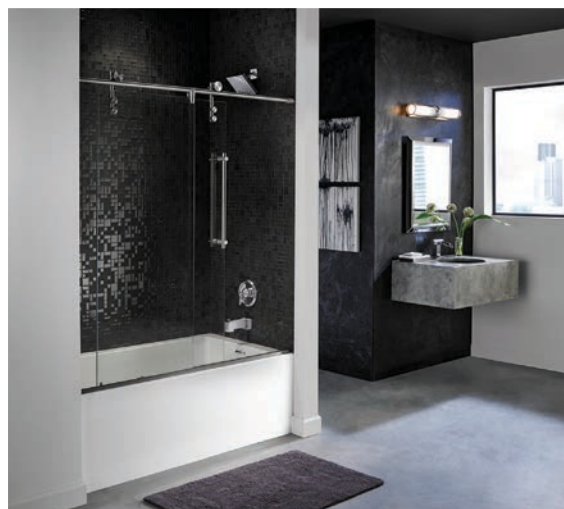






From **MTI Baths**, the Halo 1 round soaking tub offers a shallow built-in seat for full immersion, as well as easy entrance and exit from the tub. Halo 1 is made of a mixture of natural ground minerals and high-performance resins for a molded stone feel that is 65 percent organic. MTI also uses a resin of combined bio-derived and/or recycled content. The suggested retail price is \$6,655. **Circle No. 245** or visit [kbbonline.com/freeinfo](http://kbbonline.com/freeinfo)

The Escape Plus walk-in tub from **Best Bath Systems** now has a redesigned curved door, control switches and faster drains. Designed for accessibility, the ergonomic curved door slides directly into the tub. Increased seat height and width offer greater ease for both sitting and standing. Additional amenities include a heated seat, added water jets and air buttons that are easier to read and reach. **Circle No. 246** or visit [kbbonline.com/freeinfo](http://kbbonline.com/freeinfo)



**Jacuzzi Luxury Bath** introduces the Linea bathtub, which plays on the Italian word for "line" with a minimalistic design. Clean lines, sharp corner radii, a modern flat-front skirt, new SlimPro jets and a linear overflow drain feature add to the modern appeal. The 60-in. by 32-in. by 19-in. tub is made in four colors, including white, oyster, almond and black, and is available starting at \$1,200. **Circle No. 247** or visit [kbbonline.com/freeinfo](http://kbbonline.com/freeinfo)



Both the globe and dome of the Glass Dome Pendant from **Allied Maker** are made from hand-blown glass to better diffuse light. Finished with American black walnut, the fixture is turned on a lathe and completed with natural oils. **Circle No. 249** or visit [kbbonline.com/freeinfo](http://kbbonline.com/freeinfo)

For a classic yet modern look, the Mosaik tub from **Aquabross** has a stone resin composition and a hand-painted exterior signed by the artist. Included in the newly launched line of Kanvas freestanding tubs, Mosaik measures 58½ inches by 26½ inches by 21½ inches and is priced at \$8,995. **Circle No. 248** or visit [kbbonline.com/freeinfo](http://kbbonline.com/freeinfo)



**Häfele** offers more than a dozen new lighting products as part of the Loox LED lighting collection. Suited for areas that are typically left in the dark, the solutions provide uniform cabinet and drawer illumination. The products offer a diffused glow that avoids diode spotting. **Circle No. 250** or visit [kbbonline.com/freeinfo](http://kbbonline.com/freeinfo)



Inspired by its namesake, the Barcelona Bathtub from **Victoria + Albert** features a rimless, double-ended design big enough for two. Crafted of Englishcast, a composite material made of finely ground volcanic limestone, the tub's one seamless piece resists flexing or creaking. The tub quickly holds and insulates water heat so less hot water is used. **Circle No. 251 or visit [kbbonline.com/freeinfo](http://kbbonline.com/freeinfo)**



Made of high-gloss cast acrylic, the Coastal Freestanding Tub from **American Standard** boasts a sleek, contemporary design. Along with a large-slotted overflow for deep soaking, the tub offers an integrated drain and a 71-gallon capacity. The suggested retail price is \$2,799. **Circle No. 253 or visit [kbbonline.com/freeinfo](http://kbbonline.com/freeinfo)**



The OBRANCH chandelier from **dsignedby** combines the classically designed fixture and the latest technology, OLED tiles. The fixture is the first produced chandelier that uses 13-in. by 13-in. OLED transparent tiles and can be adapted with the adjustable panels. The vertical suspension is made out of two parts so the height can be set to two possible settings. **Circle No. 252 or visit [kbbonline.com/freeinfo](http://kbbonline.com/freeinfo)**



Balancing style and substance, Davos from **Modern Forms** boasts a thin profile with automotive gloss finishes. Made with LED technology, the luminaire uses LED modules to deliver high lumen output, a 90-color rendering index and a 70,000-hour rate life. The replaceable modules can be dimmed down to 10 percent with an electronic low-voltage dimmer. Constructed of aluminum, Davos is damp location listed and can be extended up to 120 inches from the ceiling. **Circle No. 254 or visit [kbbonline.com/freeinfo](http://kbbonline.com/freeinfo)**



From **Boffi**, the Boccia light by Piero Lissoni is an LED lamp available in wall-, mirror- and top-mounted versions, as well as a suspended version with an adjustable length. The lamp is made with an opal glass bowl, is sphere-shaped with aluminum tubes and is height adjustable with a tightening cylinder. **Circle No. 256 or visit [kbbonline.com/freeinfo](http://kbbonline.com/freeinfo)**

**Clarke Products'** Oval One tub puts a modern spin on a classic design with Omoxo technology, which creates a smooth and durable solid surface material. The compound uses liquid acrylic resin, a UV-resistant material, to maintain the tub's color over time. The design of the unit allows for both drop-in and freestanding installation. **Circle No. 255 or visit [kbbonline.com/freeinfo](http://kbbonline.com/freeinfo)**



PRODUCTS



The 30-in. **Bertazzoni** Master Series Induction Range will feature two product tiers – manual and self-clean – for a total of four induction cooking zones and nine different cooking functions. Available in stainless steel, the range will be made available to consumers in June 2015. **Circle No. 268** or visit [kbbonline.com/freeinfo](http://kbbonline.com/freeinfo)

**St. Thomas Creations** has introduced two new undermounted sinks – the Wilshire Oval Undermount Lavatory and the Presley Undermount Lavatory (pictured). Traditional yet understated, the sink has a distinctive architectural feel with a subtle, stepped basin. Both models are crafted in vitreous china, feature anti-microbial finishes, are available in white and balsa and retail starting at \$197 for the Presley. **Circle No. 269** or visit [kbbonline.com/freeinfo](http://kbbonline.com/freeinfo)



From **American Clean**, Concrete Chic Glazed Porcelain with Reveal Imaging has refreshed the stained concrete look with updated graphics and a contemporary color palette. Made in the U.S. with recycled content, Concrete Chic is available in five contemporary neutrals and in 12-in. by 24-in. or 12-in. by 12 in. sizes. **Circle No. 270** or visit [kbbonline.com/freeinfo](http://kbbonline.com/freeinfo)



**Carlisle Wide Plank Floors** has launched 12 new flooring collections starting at \$8.99 per square foot. Shown here is rustic Baled Hay from the Farmhouse Collection. Members of the trade will receive 10 percent off retail pricing through the company's new Preferred Pricing Program, as well as a free design portfolio, which includes easy-to-use, perforated color chips to tear off and attach to a client presentation or inspiration board. **Circle No. 272** or visit [kbbonline.com/freeinfo](http://kbbonline.com/freeinfo)

Inspired by **True Refrigeration's** commercial models, the True 42 refrigeration line is the company's first foray into the full-size residential refrigerator market. Inside, the stainless steel interior includes a temperature control and four steel-encapsulated, adjustable glass shelves above three stainless steel bins with soft-close action, as well as a freezer with four shelves and three basket drawers. **Circle No. 273** or visit [kbbonline.com/freeinfo](http://kbbonline.com/freeinfo)



**Accuride International** introduces Model AL4190, a Tilt Track System that provides access to drawers or trays installed at shoulder level and above. The system uses wheels and rollers to extend the drawer, and an aluminum channel guides the back of the drawer upward as it slides out of the case, tilting the drawer downward for easy viewing and access to contents. Model AL4190 carries drawers up to 40-in. wide and loads up to 140 pounds. **Circle No. 271** or visit [kbbonline.com/freeinfo](http://kbbonline.com/freeinfo)

