

January 2017

THE  
KBIS SHOW  
ISSUE

# Kitchen & Bath Business



**2017 K&B Industry Outlook  
Color Trends Report  
Consumer Views on Technology  
Design for Wellbeing**

THE OFFICIAL PUBLICATION OF **KBIS**

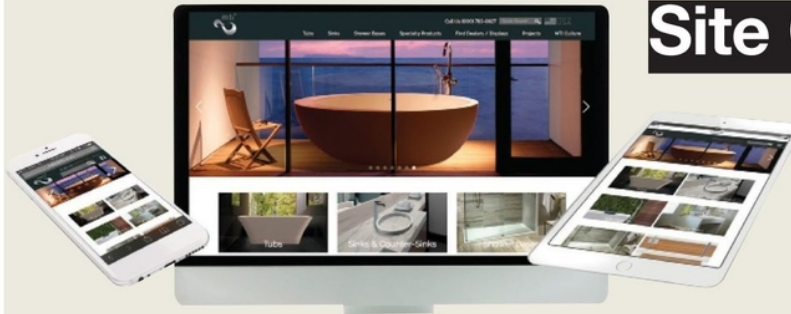
## Happenings



Duravit has added **DANELLE HOWARD** as a sales representative for the Southern territories, including Texas, Oklahoma, Arkansas and Louisiana. She will be responsible for applying principled and disciplined sales approaches to optimize growth in her region.



Architectural Granite & Marble has named **SUNIL PALAKODATI** its new CEO upon the retirement of Jack Seiders. Formerly with Masco, Palakodati is responsible for leading the management team, driving organic growth and acquisition and integration.



## Site Optimization

**MT BATHS IS PROUD TO ANNOUNCE ITS NEW RESPONSIVE WEBSITE** at [www.mtbaths.com](http://www.mtbaths.com), which incorporates the latest responsive website design technology to make it easier for designers and showroom consultants to see content on handheld devices. The appearance of the new site is designed to automatically adjust to any size screen to optimize graphics and function.

## Friendly Website

**WELLBORN FOREST PRODUCTS RECENTLY INTRODUCED A REDESIGNED WEBSITE** at [www.wellbornforest.com](http://www.wellbornforest.com) that provides users a clean, uncluttered design with improved functionality and enhanced content to make shopping for semi-custom cabinets easier. The company offers multiple products, and the previous site made it hard to navigate through all of them; the new site streamlines searching for cabinet styles and finishes.



**KBIS** ORLANDO  
JANUARY 10-12  
2017  
Booth S4593

## Your Dream Manufacturer

Volume Components ♦ Custom Products ♦ Superior Lead Times

(800)592-5266

[sales@archonwood.com](mailto:sales@archonwood.com)

[www.archonwood.com](http://www.archonwood.com)

**Valley Oak**  
CABINET DOORS



Accensa

**ARCHON**  
WOODWORKS

**KitchenAire**  
Sustaining the Culinary to the Exceptional

**THOMAS CREEK**  
MADE IN USA

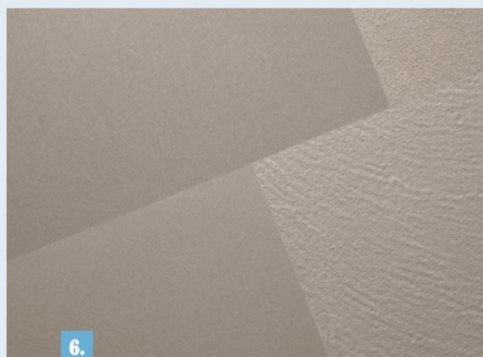
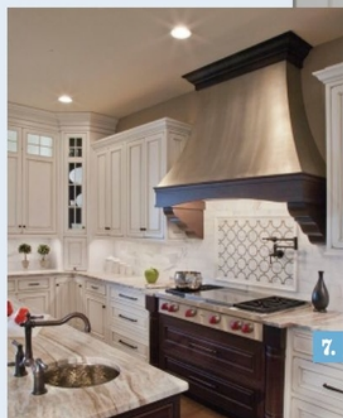
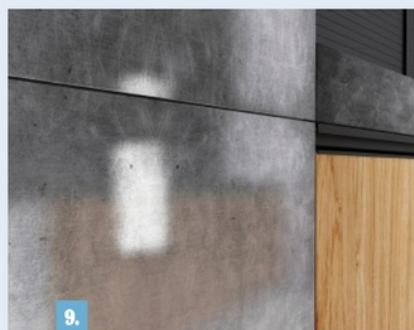
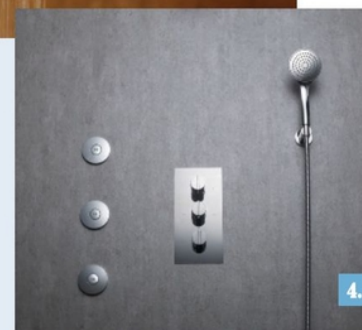
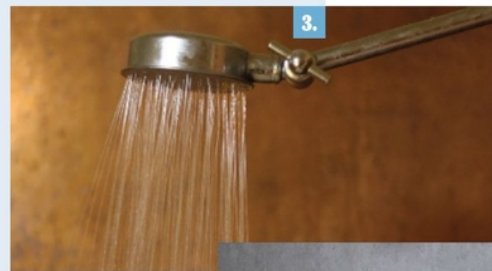
# IT'S... KBIS Products

**1. GLIDEWARE** introduces the Not-So-Lazy Susan, which maximizes storage in the largest cabinet in the kitchen: the corner cabinet. This product augments space with an upper organizer and a lower storage shelf, secures cookware handles with a mid-level arrester and delivers long-term, maintenance-free operation with its self-adjusting Quick-Fit hardware. *Booth S4122*

**2. WELLBORN CABINET** is displaying its Elegant Bath Collection – a twist of old-world Charleston and Hollywood glam. The wall-mounted cabinetry design features unique textures and colors mixed with different door styles and decorative elements. The inset doors feature Benjamin Moore's Spring Meadow hue. *Booth W1271*

**3. From the COPPER SHOWER CO.**, the Copper Shower kit is currently available in copper and galvanized metal. The copper materials work well for the bathroom because of anti-corrosive and anti-microbial properties. *Booth S4696*

**4. ISENBERG BATH CORP.'s** new Series 145 captures the elegance of the modern minimalist look and has been fully developed to include 21 coordinating pieces. Options include a variety of configurations for sinks and tubs, as well as thermostatic shower valves and diverters. *Booth S4408*



**5. At KBIS 2017, LG ELECTRONICS** will showcase its premium LG Studio Black Stainless Steel line, which was inspired by designer Nate Berkus. The refrigerator will feature LG InstaView technology, which allows users to look inside without opening the door. *Booth W329*

**6. LAPITEC** presents the brand new solid color Avana, which is a warmer shade with a contemporary feel. Like all of Lapitec's colors, Avana will be available in seven finishes: vesuvio, arena, lux, satin, lithos, dune and fossil. *Booth W628*

**7. Metal Fusion range hoods from KOUNTRY KRAFT** are rendered in wood and bathed in a real metal finish. Metal Fusion is a coating that replicates the look of metal when applied to wood and consists of real pulverized metal particles combined with a special resin. *Booth S6085*

**8. KOUNTRY WOOD PRODUCTS** announced the addition of the Rentown door style to its existing product line. The Rentown is a transitional door style combining a wide rail Shaker with a traditional flat panel, mortise and tenon door. *Booth W301*

**9. Textured Metal from WITT KITCHENS** will have its American premiere at KBIS 2017. Appearing to be solid metal treated with a brush, this is a carefully hand-polished lacquered surface that can transform a space into a modern interior. *Booth S4274*

## What's Hot

# What's Hot in Faucets



1

1. With an edgy, square-shaped, high-arc spout and streamlined lever handles, the Gibson Bath Collection from **MOEN** provides a fresh, modern feel for the bath. The long spout simplifies everyday tasks.



2

2. The Joffrey bath collection from **NEWPORT BRASS** is an ideal option for the discerning transitional customer. Combining a graceful and slender design profile with a flared base, the collection features a modern design with harmonic lines.

3. **PIONEER INDUSTRIES** introduces contemporary MOD lavatory faucets with WaterSense and CalGreen certifications. Along with clean, elegant lines and brass construction, the faucets have a smooth-operating ceramic disk cartridge and are ADA compliant.

4. CleoSteel is a **FIR ITALIA** collection of mixers and taps made entirely of AISI 316L stainless steel, an environmentally friendly material with qualities like high resistance, maximum hygiene and aesthetic value.



3

5. The Venezia series from **FANTINI** evokes refinement, luxury and tradition with white, black and blue colors. Two different handles are offered for this series: the first is a transparent glass, and the second is a tapered, horizontal form in black or chromed metal.

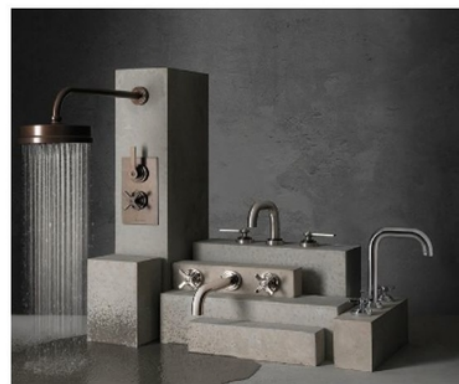
6. **WATERMARK DESIGNS** recently introduced the Sutton Collection of faucets, which was designed in collaboration with INC Architecture and Design. Inspired by an antique cappuccino machine lever handle, the faucet boasts detailing like linear knurling and hex nut-styled handles.

7. The Nature Cross Collection from **MCN EUROPEAN ENTERPRISES** brings the industrial look to the bathroom with graceful curves and columns. Available finishes include polished chrome, brushed nickel and polished nickel.



4

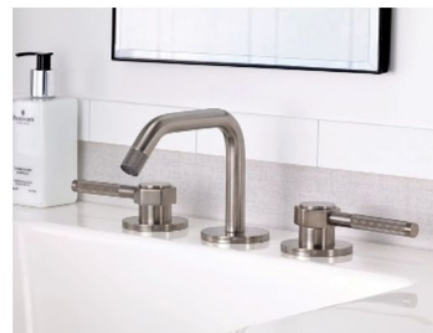
8. In LMK Pure, **SAMUEL HEATH** has created a well-balanced range that builds on the foundations of the existing Fairfield and Style Moderne collections. Minimal embellishment and balanced proportions give LMK Pure a clean, concise appearance, while intricate details provide the distinctive styling essential of luxury bathroom design.



8



7



6



5

## What's Hot

# What's Hot in Sinks



1

1. The Metropolitan double washbasin from **MAISON VALENTINA** draws inspiration from the Metropolitan Museum of Art in New York City. This black marble composition was created to interpret the consumer's desire for exclusive décor products.



8

2. The Canto from **ICERA/ST. THOMAS CREATIONS** is a medium-sized, sculptural vessel sink with canted walls. Designed to match the understated simplicity of the Canto one-piece toilet, this sink has a transitional look that works well in modern and traditional settings.



2

3. The 2016 basin collection, including Edge, Wave and Level, from Dutch designers **BATHS BY CLAY** is made from HI-MACS' homogenous material, which is virtually scratchproof and non-porous. Shown here, Edge is simple yet sophisticated and characterized by its minimalist rectangular appearance and thin edge.



7

4. The calmness of a starry night inspired the name for **THOMPSON TRADERS'** new Stella Sink. Shown in a handcrafted, hand-hammered rose gold finish, Stella is 17 inches around and five inches deep.



3

5. Made of solid copper, **COPPERSMITH CREATION'S** double-wall sink with embossing on the outside is hand waxed for easy maintenance. The sink is available in medium antique and light antique finishes and is 16 inches wide and six inches deep.



6

6. **HASTINGS TILE & BATH'S** Elite basins are named for their ultra-thin yet ultra-strong ceramic makeup. Available in square, round or oval shapes, the basins are available in several finishes, including matte white, gloss and matte black.

7. **KOHLER'S** Inia Wading Pool sink features a deep basin that helps minimize splashing, and its glass surface is easy to clean. It is available in a variety of colors, and its subtle hammered texture and a painted underside help conceal vanity items and fixtures.

8. Designed by Fattorini, Rizzini & Partners for **FALPER**, the QUATTRO.ZERO collection uses the Italian composite material Ceramilux SSL to make ultra-thin washbasins, drip-proof countertops and 45-degree finishes. The collection is available in a variety of finishes and is complemented by modular, wall-hung cabinetry.



4



5

## What's Cool

# What's Cool... Everywhere Else



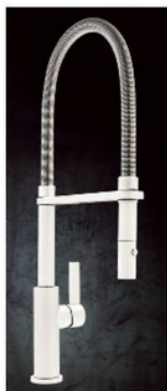
1



2



3



4



8



7



6



5

1. **Victoria + Albert** brings a new peace of mind with the unveiling of the Kit 40 Intelli Waste system, which uses advanced magnets to protect homes from flooding. It works just like a standing drain, but the concealed system uses water pressure to sense rising water levels. 2. **Brondell** debuts the Swash 1400, an intelligent electronic bidet toilet seat. It offers features like dual stainless steel sterilized nozzles and customizable nozzle positions, water temperatures, water pressures and spray widths. 3. **WETSTYLE** has expanded its Glacier collection to include new sizes and applications, including a 60-in. by 36-in. zero-threshold pan for universal access applications. The new shower receptor is also now available in a dark gray color. 4. Available for **California Faucets'** Kitchen

Collection of Italian-inspired, handmade faucets, Matte White offers a unique alternative to everyday chrome finishes. The clear powder coating is designed to allow the underlying color to show through and offer an extra layer of protection. 5. From **#GRABDASH-BAR**, the Venetian Bronze Wavy Grab Bar can be installed horizontally, vertically or on an angle. The bar comes with a one-year manufacturer's warranty and is available in 16, 24- and 36-in. sizes. 6. Inspired by the modernist take on classic geometry, the new Tableau Collection of interchangeable hardware from **Atlas Homewares** allows users to unleash their creativity.

The pieces come unassembled with shapes and finishes that can be mixed and matched. 7. **SICIS** has created a line of bathtubs covered in Vetrite, which is composed of glass plates and polymer composites of metal and fabric. Shown here, the Alba tub recalls royal palaces with its mosaic tile and ancient-style details. 8. **Bertch** introduces farmhouse-style interior barn doors. These interior sliding barn doors are great space-saving partitions that allow for the separation of rooms while doubling as an accent feature.