

4/11

The leading business, design
and product resource for
the kitchen & bath trade

www.kitchenbathdesign.com

Kitchen & Bath design news

Design Delights

Vibrant colors and natural influences inspired the
finalists in the 2011 NKBA Design Competition

Successful Bath
Planning Addresses
Ergonomic Concerns
PAGE 58

Kitchen Design
Takes to the
Great Outdoors
PAGE 88

Whirlpools, Spas,
Saunas Spotlight
Wellness Trend
PAGE 92



Glass Countertops Provide Custom Look

ThinkGlass creates an array of custom glass countertops that are made from 100% recyclable glass. Each countertop is unique, with a huge selection of molded textures and hand-painted colors available. Customers can select their glass thickness, edge treatments and even add LED lights. The countertops are naturally resistant to scratches, mold and mildew, and can endure high heat without cracking or scorching, the company notes.

www.thinkglass.com
Circle No. 201 on Product Card

Colors Abound in Glass Vessels



Custom Fused Glass Bowl Vessels from Meyda Custom Lighting feature a broad range of colors and designs. The Tropical Fused Glass Bowl Vessel is kiln-fired, fused glass in colors of blue, yellow, green and red swirl and stripe motifs. The vessel stands 4.25" tall and 15" wide.

www.meyda.com
Circle No. 204 on Product Card

Hardware Has Ornate Design

The Empire Collection from Richelieu Hardware includes a range of decorative knobs and pulls. The pieces are crafted from cast iron and are available in multiple sizes and finishes.

www.richelieu.com
Circle No. 206 on Product Card



Bench Seat Fits Aging-In-Place Set

Liners Direct has introduced a bench seat that measures 25"x15-3/4" and is designed for comfort and the transfer of people in need of the resource. The bench fits along the back of the side wall but can be installed along the soap dish wall in larger showers. It is available in four solid colors and side wrap material is available in all of the wall colors the company offers.

www.linersdirect.com
Circle No. 202 on Product Card

Odor Problems Resolved with Indoor Composter

The CompoKeeper is designed to assist with composting of food scraps in the kitchen. The CompoKeeper works like a huge zip lock bag lining the inside of a waste bin that can be opened and closed using the foot pedal or turning the hand lever. Keeping compost in the CompoKeeper allows recyclers to store food scraps without the unpleasant odors and side effects of indoor compost storage.

www.compokeeper.com
Circle No. 203 on Product Card



Refrigerator Drawers Offer Rapid Cooling

Perlick Corp. has added Refrigerator Drawers to its C-Series product line of refrigeration products. Part of the company's moderately priced series, the 24" Refrigerator Drawers feature 5.3 cu. ft. of capacity, and each drawer is deep enough to accommodate a gallon of milk. The series is powered by a quiet 700 BTU compressor, with the firm's RAPIDcool refrigeration technology allowing for fast temperature pull-down.

www.perlick.com
Circle No. 205 on Product Card



Mosaic Combines Slate and Glass

Bellavita Tile's Botswana series of tile mixes slate and glass for a shimmering yet natural look. The Botswana series comes in six colorways: Makgadi White (shown), Chobe Earth, Okavango Savannah, Mashatu Gold, Nxai Sand and Savute Night. The mosaic pattern is fashioned by combining 1"x1", 1"x2" and 2"x2" tiles on a 12"x12" sheet.

www.bellavitatile.com
Circle No. 207 on Product Card





Architecture Influences Hardware Design

Born out of a partnership between Reveal Designs and the Frank Lloyd Wright Foundation, the initial series within the Taliesin Design Hardware Collection feature elegant, simple lines. The Series 630 and Series 631 can be mixed for an eclectic look, and feature 4.25" pulls that may be finished with stainless steel and a choice of beech, walnut, oil rubbed bronze or as solid stainless pieces.

www.reveal-designs.com

Circle No. 208 on Product Card

Hardware Line Offers Many Choices

Nice Knobs! is a line of wood knobs, cabinet pulls and appliance pulls available in many shapes and sizes, as well as 11 wood species. Shown is a set of cherry knobs and pulls that work with many styles of cabinetry.

www.niceknobs.com

Circle No. 209 on Product Card



Laundry Unit Combines Washing & Drying

Ariston's new ARWDF 129 & 129 S Combination Washer/Dryer is compact at just 24" wide. Condensation technology contains and reuses the hot air created by the drying process, allowing excess moisture to leave through the drain hose. The unit can wash and dry loads in less than 60 minutes.

www.aristonappliances.us

Circle No. 211 on Product Card



Range of Options Marks Lav Series

The Marquee Collection of undercounter lavatories from Porcher includes three sizes, four shapes and six different surfaces – creating 96 choices in all with the various options available. Inspired by the faceted beauty of diamonds, the symmetrical, vitreous china sinks are available in round, oval, square and rectangular with chamfered detailing. The three colors – white, biscuit or black – are offered in a fully glazed or matte finish.

www.porcher-us.com

Circle No. 210 on Product Card



Is Your Business in Need of Change?

SEN Exclusive Business Coaching Will Help Your Business Mature up to its Potential

Made Affordable Through the Generosity & Leadership of

Dura Supreme Cabinetry Medallion Cabinetry

ask@SENdesign.com or call 252.636.3335
for Proof of Performance

SENdesigngroup.com | visit us at KBIS Booth 5627



Circle No. 59 on Product Card



17

13. **BainUltra's** Vedana Therapeutic Unit features ThermoTherapy and can be installed directly into any bath or shower area. The system can reach and maintain 80 degrees C, the temperature recommended for authentic dry-heat ThermoTherapy. The unit also comes with light therapy, aromatherapy, chromatherapy and sound therapy.

Circle No. 192 on Product Card

14. **Helo Sauna's** 2-in-1 InfraSauna with CarbonFlex heating technology combines both traditional and infrared sauna benefits. The InfraSauna provides all of the comfort and steam of a traditional sauna with the milder heat therapy options of an infrared sauna.

Circle No. 193 on Product Card

15. The **Meditub** 29" x 52" tub features a unique design that allows a bather with limited mobility to either walk into the tub or slide in from a wheelchair. This unit, with its contoured door, will swing right over the toilet fixture in small or tight areas. The tub is available as a soaker or with water and/or air jets.

Circle No. 194 on Product Card

16. The Oakmont tub from **Laurel Mountain Whirlpools** is constructed of .125 thick cast acrylic sheet, backed by layers of polyester resin and fiberglass roving. The bath contains six multi-directional, adjustable jets, dual air controls and a safety suction fitting. It is available in whirlpool, air or a combination of whirlpool and air, in 30 colors.

Circle No. 195 on Product Card

17. **MTI Whirlpools** has added to its BASICS line with the Walk-In Tub. The tub's door is lightweight and easy to latch, and the interior features a molded seat, textured slip-resistant floor and two acrylic grab bars. It is available as a soaking tub, or with whirlpool or air bath features.

Circle No. 196 on Product Card

18. **Finnleo's** Reflections Designer sauna with corner to corner glass fits any décor with optional laminate, cedar or whitewood exterior and Finnleo's trademark Abachi benches and backrests. Special low-voltage backrest lighting and a built-in iPod dock are added features.

Circle No. 197 on Product Card

19. **Kohler** has enhanced several of its cast iron baths – including Tea for Two, IronWorks, Kathryn and Memoirs – by adding its BubbleMassage technology. The cast iron baths have 40-44 staggered air jets positioned on the lower perimeter of the bath, with specially designed patterns for foot and lumbar air jets surrounding the bather.

Circle No. 198 on Product Card

20. **Mansfield Plumbing Products** is adding eight air baths to its Builder Series Pro-Fit line, which includes whirlpools and soakers. Each Pro-Fit Air Bath features: 46 to 58 air channels for massage, single-speed blower with air heating element, air switch operation and an automatic feature that blows any remaining residue out of the Quick Drain air channel after use.

Circle No. 199 on Product Card



15



20

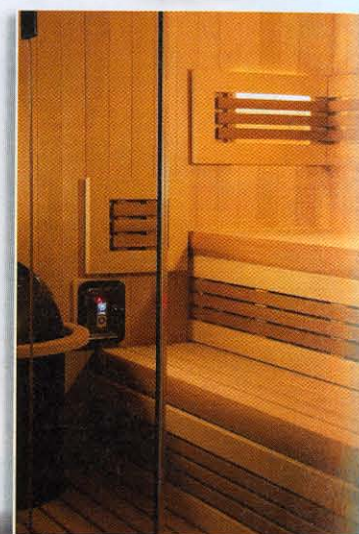


13

14



16



18



19



Photo: ©2010 Robert Reck

Elizabeth A. Rosensteel
Co-Designer: Meredith Comfort
Elizabeth A. Rosensteel Design/
Studio
Phoenix, AZ

Ocean-View Bath Features Clean Lines

Described by designer Elizabeth A. Rosensteel of Phoenix-based Elizabeth Rosensteel Design/Studio as “sparsely adorned and elegantly comfortable,” this ocean view master bath features repeating shapes and forms.

A floating vanity, suspended self-illuminated mirror and long, sloping Lacava tub mimic the shape of the sink, also from Lacava. Accents include a Jerusalem Stone floor and countertops in Wenge wood and glass.

“Abundant in function and form, this peaceful retreat relies on a precise and minimalistic approach,” says Rosensteel, who worked on the design with co-designer Meredith Comfort.

Most importantly, according to Rosensteel, the new design offers two things the old design did not: a maximum view of the ocean and comfortable access from the bedroom.

John A. Granato II, CKD
Master Designs
Syracuse, NY



Photo: Christina Branou

Bath Aligns Indoors & Out

Designer John A. Granato II, CKD, of Syracuse, NY-based Master Designs, was charged with turning one of four second-floor bedrooms into a contemporary master bath.

The opening from the bedroom is aligned with a new window that is situated over a deep Victoria & Albert soaking tub.

“The location of both allows the homeowners a view of their picturesque landscape while still reclining in bed,” says Granato.

The Kraftmaid cabinetry is elevated to evoke a lighter, less rooted feeling. Faucets and fixtures are by Danze from its Sirius Series. Toto’s Carolina toilet is located in a non-isolated water closet on the other side of a custom glass-and-chrome shower.



Photo: Brian Charlton/OBEO

Christine Salas, CKD, CBD
Cocina Interior Design
Calgary, AB

Bath Combines Form, Function & Indulgence

This cool gray master bath was designed to be a tranquil retreat.

“From the dual-sided fireplace and steam shower, to the freestanding Victoria + Albert tub and accents of the client’s personal art collection, it offers a highly personalized and pampered [experience],” says designer Christine Salas, CKD, CBD, of Calgary, AB-based Cocina Interior Design.

The space features CaesarStone countertops, a Steamist steam shower, Toto’s Aquia toilet and custom solid cherry cabinetry.

Poggenpohl Boston Honored for Service

Boston — Poggenpohl Boston has been awarded the “2010 Best Showroom Customer Service” Award by Ted Chappell, president of Poggenpohl U.S., the company announced.

The four-member Boston design team, led by Rosemary Porto, was selected from more than 30 Poggenpohl kitchen design studios across the U.S. for their “exceptional customer relations and dedication,” Poggenpohl said, adding that Poggenpohl Boston’s approach “emphasizes design with a ‘lifestyle’ approach, with the result being an individual kitchen space that enhances the client’s quality of life.”

“We are very excited about this award,” said Porto, sales manager and senior designer at Poggenpohl Boston. “Our team is committed to making each customer their number-one priority. We listen, create and follow up on each and every project. It’s a strategy we’re proud of and one that really works.”

Dacor Expands Outreach To Select Lowe’s Outlets

Costa Mesa, CA — Dacor, the Costa Mesa, CA-based manufacturer of luxury kitchen appliances, has expanded distribution and will display



Poggenpohl Selects Boston Location for Honor

Sales manager and senior designer Rosemary Porto accepts the ‘2010 Best Showroom Customer Service’ award from Ted Chappell, president of Poggenpohl U.S., on behalf of Poggenpohl Boston.

products in select Lowe’s retail store locations, the company announced.

The expansion into Lowe’s, Dacor officials said, is aimed at increasing sales and brand awareness in the home improvement segment “by reaching a different type of customer, previously unexposed to the Dacor brand, so it will become a stronger partner to all of its valued customers.”

Selected Lowe’s retail locations will display Dacor’s Renaissance Gas Cooktop and its Renaissance Single Wall Oven, the company said

Victoria + Albert Wins ‘Good Design’ Award

Mount Pleasant, SC — Victoria + Albert, the Mount Pleasant, SC-based manufacturer of luxury free-standing

tubs, sinks and faucets, has won a 2010 “GOOD DESIGN” Award for its Napoli Bathtub, the company said.

Now in its 60th year, the GOOD DESIGN awards program is sponsored by The Chicago Athenaeum: Museum of Architecture and Design and The European Centre for Architecture Art Design and Urban Studies. The program is widely considered to be the most recognized program for design excellence worldwide.

Victoria + Albert also announced its professional membership in the American Society of Interior Designers (ASID) as an Industry Partner.

“We are excited to partner with the design community and offer support and service through educational programs,” said Javier Korneluk, v.p./sales for Victoria + Albert.

“Our company is committed to providing products of the highest quality design and we look forward to working with the ASID to educate and collaborate on relevant issues of bath design.”

Energy Star Appliances Seen Making Advances

Palatine, IL — As affluent consumers continue to think about kitchen and bath remodeling projects, “the stakes for manufacturers of Energy Star products should rise over the next 24 months,” a pair of researchers said last month.

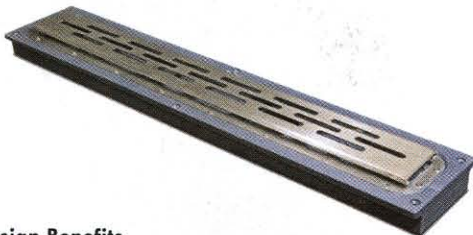
According to the researchers, among affluent homeowners planning to remodel a kitchen, 56% with homes valued under \$1 million plan to add Energy Star appliances to their homes, while 38% with homes valued over \$1 million plan on adding Energy Star appliances to their homes.

“These are important statistics and good news for the kitchen and bath industry, especially for manufacturers and distributors of Energy Star products,” said Jim Nowakowski, president of MarketNet Associates, a division of Interline Creative Group, a Chicago-based company that serves as a master distributor and representative for luxury products.

MarketNet issued the finding in conjunction with The American Affluent Research Center (AARC), a private research organization that conducts twice-yearly surveys regarding the attitudes and buying plans of the 11.4 million households that represent the wealthiest 10% of U.S. households.

Are you a Linear thinker?

FreeStyle Linear Drains™



Design Benefits

- Single slope allows for the use of larger tiles for greater design flexibility.
- Contemporary styling with a standard selection of six, drain lengths (from 24" - 60") and four brushed stainless steel strainer styles.

Owner Benefits

- Membrane clamping mechanism assures a watertight seal with the shower’s membrane system.
- One-piece PVC or ABS solid base construction ensures dependable performance with no manufactured seams for the life of the original tile installation.

Installer Benefits

- Simple and practical installation. Fasten drain to the floor, tie in the plumbing, and attach membrane to clamping mechanism.



800.878.5788 • www.noblecompany.com

Circle No. 14 on Product Card

Spa SPACES

The overall trend of the bath-as-personal-retreat continues to grow, with products that promote wellness all the rage right now. In line with the trend toward simpler designs, the market is seeing an explosion of minimalist designs with clean lines and subdued color palettes. Products that contribute to a relaxing environment remain hot, including jetted tubs, spas, saunas and steam baths.

Additionally, an aging demographic has given a boost to products that offer therapeutic benefits, as these are seen as having a real value – something that is important to today's consumer.

On this and the following two pages, *KBDN* highlights a small sampling of these products.

1. The Radius Steam Shower from **Aquatic** is one of 15 steam showers and shower systems from the company. The shower features a smooth wall, integral footrests, slip-resistant floor and designer metallic grab bar surrounded by a chrome with clear or obscure glass steam door. An electronic control operates chromatherapy LED lighting and aromatherapy options.

Circle No. 180 on Product Card

2. The Acero bathtub from **Jacuzzi Luxury Bath** is available in a Soaking Bath, Pure Air, Whirlpool or a combination of all three in the Salon Spa. The tub includes integrated armrests, thin profile deck, deep well depth and chromatherapy options. The tub is offered for drop-in or undermount installation.

Circle No. 181 on Product Card

3. The Lawson drop-in bath from **Sterling** features curving back and arm rests for increased comfort. The 5'-long, 20"-deep tub provides room for deep soaking, and is also available as an Air Massage bath with three-speed blower as well as a whirlpool bath with optional heater. The Lawson bath features a full deck, and is available in White, Kohler Almond and Kohler Biscuit.

Circle No. 182 on Product Card

4. The Tonic massage system from **Produits Neptune** combines water and warm air to immerse the body in effervescence. Eight oxygen jets built into the tub's contour produce thousands of micro bubbles that surround the body. Tonic also provides preprogrammed sessions, and each system comes with four built-in LEDs that project an array of eight colors.

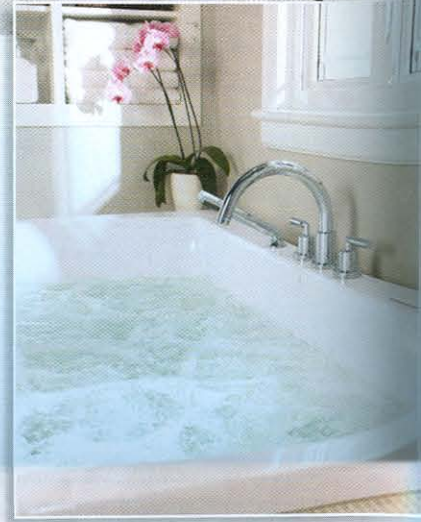
Circle No. 183 on Product Card

5. **Jason International** has launched a form of hydrotherapy known as MicroSilk, a patent-pending process that generates billions of tiny, oxygen-rich microbubbles that create an effervescent sensation and provide a gentle, deep-cleansing of the skin and pores. MicroSilk is available in a variety of bath designs and may be combined with other types of Jason International's hydrotherapy bath products.

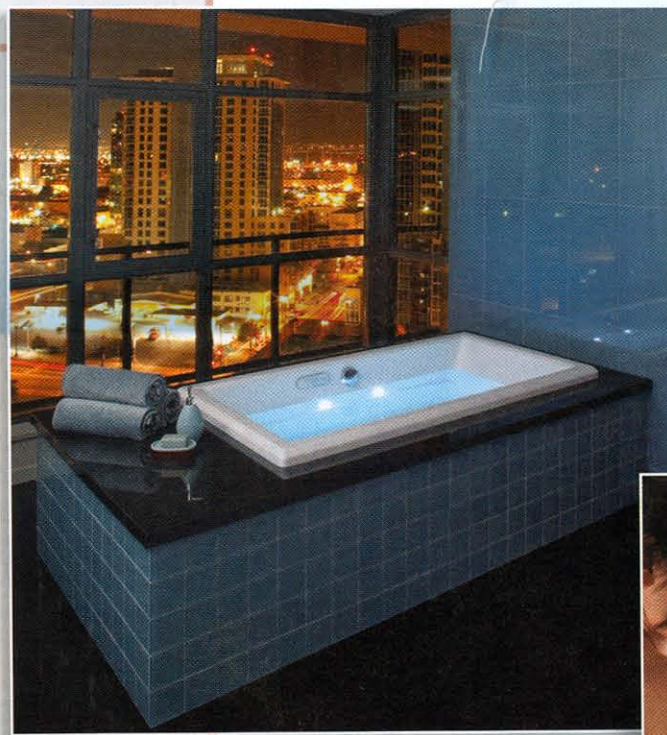
Circle No. 184 on Product Card



1



4



2



5



3



11



7



6



12

6. The Home Wizard from **Mr.Steam** automates steambath activation by allowing connection to home automation systems, whether controlled by a cell phone, computer, iPad or in-home control panel. This state-of-the-art automation system is energy efficient, automatically shutting down the steam generator if usage does not begin within 10 minutes after activation.
Circle No. 185 on Product Card

7. The TSC-250 Digital Control from **Steamist** features two-user programming and is designed for customers who desire the selectable Instamist and Even Steam features with the company's Total Sense Collection without adding any of the spa options. The touchpad unit with blue digital readout installs inside the shower.
Circle No. 186 on Product Card

8. The EcoSilent Whirlpool System from **American Standard** features a whirlpool pump and motor that has been integrated into a single unit, cutting noise levels by 50 percent, according to the firm. The pump and inline heater work together to provide hydrotherapy while using less energy. Shown is the Ellisse EcoSilent Whirlpool.
Circle No. 187 on Product Card

9. The Exhibit bathtub series from **MAAX** features contemporary and sleek lines for a minimalist-inspired design. Available in alcove, drop-in and corner installation configurations, Exhibit features a wide apron for faucet installation. Options for the tub include chromatherapy, whirlpool and Aeroeffect.
Circle No. 188 on Product Card

10. The SS5230 Gelcoat Safety Tub from **Safety Tubs** measures 52"Lx30"Wx42"H and features a curved access door, color-matched drain, overflow and safety bar, and a slip-resistant floor. Available with a jet massage system, air bubble massage system or dual massage system, tub options also include in-line heater, chromatherapy, aromatherapy and minute drain water removal.
Circle No. 189 on Product Card



8

11. **ThermaSol's** redesigned Serenity Light & Music System includes an all-in-one, high-intensity, full-spectrum LED light system for chromatherapy, as well as a high-performance speaker set. The system features a built-in FM receiver and two additional input source interfaces for MP3 players, TVs or DVDs.
Circle No. 190 on Product Card

12. **Diamond Spas'** Stainless Steel Rectangular Japanese Bath is shown here with a front skirt and whirlpool jets. Any Diamond Spas bath can be fitted for a whirlpool system, which includes six jets accompanied by a powerful pump. Additional jets can be added and custom jet placement and heaters are also available.
Circle No. 191 on Product Card



9



10



Metallized Wood Carvings

Art For Everyday (Booth C4015) has partnered with Make it Metal to create new finishes on its wood carving components. The use of cold metal spray technology provides the pieces with the appearance of metal. The finishes include Illuminant, brass, bronze, copper, iron, zinc and nickel silver. Like metal, the pieces can also be finished in a variety of methods, such as sand blasted, wire brushed, patina or polished.

Circle No. 245 on Product Card



Shower Bench

The fully compatible, pre-formed Redi Bench from **Tile Redi (Booth C4348)** is now available for new shower construction or tub-to-shower renovation projects. The Redi Bench is a one-piece unit that can be screwed into the shower frame and becomes immediately ready to tile over.

Circle No. 246 on Product Card

Gas Cooktop

Dacor's (Booth C4529) Distinctive 36" Gas Cooktop was developed in collaboration with BMW Group Designworks USA. It was designed with ergonomic angled controls for ease of use and Illumina Indicator Lights that glow in Dacor's signature flame-blue when a burner is on. The cooktop is equipped with five burners, including one SimmerSear with melting feature.

Circle No. 247 on Product Card



Glass Countertops

ThinkGlass (Booth C6882) offers maintenance-free glass kitchen countertops that are made from 100% recyclable glass. Each countertop is unique, with a huge selection of imbedded textures and hand-painted colors available. Glass thickness, edge treatments and even LED lights can be chosen to further personalize the design.

Circle No. 249 on Product Card

Bath Collection

The Elegant Bath Collection from **Wellborn Cabinet (Booth C5551)** features an extensive number of vanities, freestanding furniture vanities, accessories and the Build A Bath Program. The collection encompasses the company's featured door styles, vast selection of stains and paints, and column, feet, base and mirror options.

Circle No. 248 on Product Card



Decorative Hardware

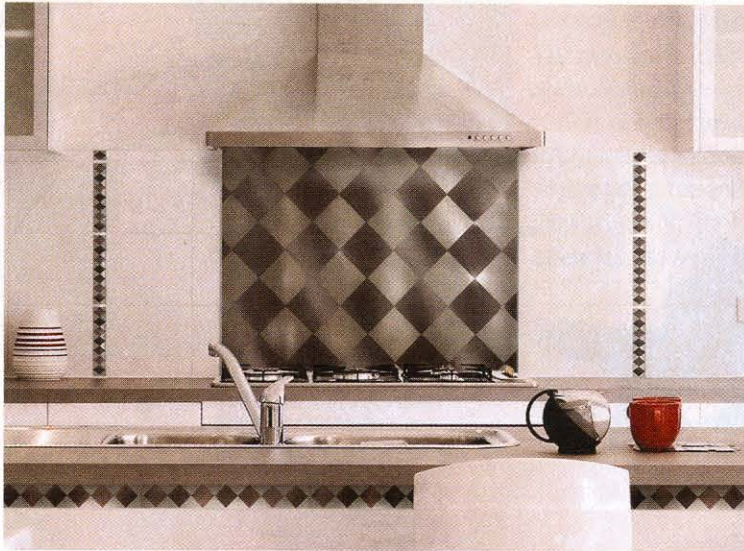
The Crystal Collection of decorative hardware from **Atlas Homewares (Booth C6638)** showcases square-cut crystal knobs and pulls in matte black. Also shown is the Eclipse glass knob, which is infused with metallic glam.

Circle No. 250 on Product Card

Stainless Steel Backsplashes

Stainless steel backsplashes from **Lasertron (Booth C4784)** are fully customizable to any size or design. Brushed stainless is integrated with etched designs in a mirrored finish. The selection includes geometric patterns of squares, circles and diamonds. Original graphics or artwork can also be integrated into the backsplashes.

Circle No. 255 on Product Card



Raised-Panel Door

The Manchester door style from **CNC Associates (Booth C7272)** is composed of a rich walnut wood in a creamy, honey-like shade. The design features a raised panel with distinctive molding applications.

Circle No. 256 on Product Card



Acanthus Motif Hardware

A richly sculpted acanthus motif embellishes this appliance pull from **Notting Hill Decorative Hardware (Booth C4455)**. Shown in Antique Pewter finish, this pull matches the company's Queensway knobs, pulls and bin pulls.

Circle No. 258 on Product Card



In-Wall Carrier Systems

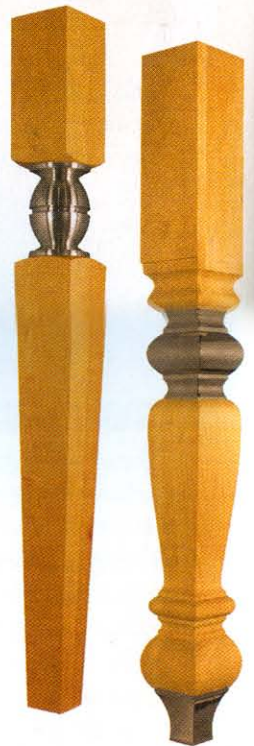
Geberit's (Booth C7152) In-Wall Carrier Systems open up the space in powder rooms by mounting the plumbing fixtures on the wall instead of the floor. The systems are available for Wall-Hung Toilets, Wall-Hung Urinals, Wall-Hung Bidets and Wall-Hung Washbasins. All internal components are easily accessible.

Circle No. 259 on Product Card

Modern Leg Design

The design of the Fusion Leg series from **Osborne Wood Products (Booth C4577)** combines traditional profiles with contemporary elements. The series is offered in eight wood types and five metal finishes.

Circle No. 257 on Product Card



Bath Ventilation

Panasonic Home & Environment Co. (Booth C3820) is offering its third generation of the WhisperGreen line of premium ventilation fans. The 13 new models of ceiling-mounted fans are designed for 4" to 6" ducts, include SmartFlow Optimum CFM Technology and address some levels at 0.25 w.g. of increased static pressure.

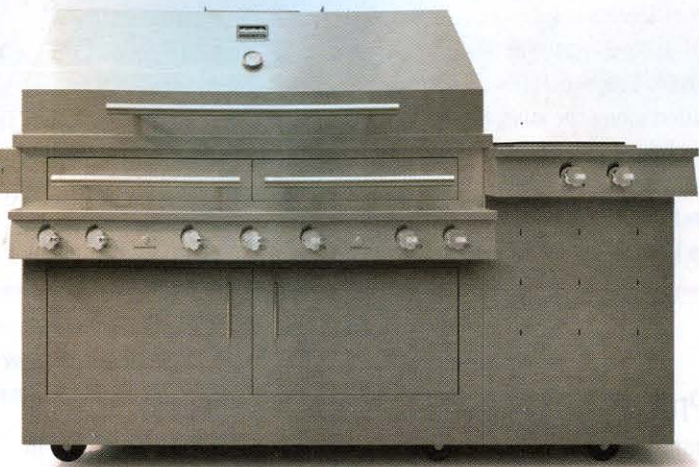
Circle No. 260 on Product Card



Modern Vanity

Part of **JSG Oceana's (Booth C6938)** Bathroom Vanity Collection, the Cruz Vanity encompasses modern style, with an open-design concept and distinctive shelving. The single bowl vanity is available in two finishes – Antique Black and White – and measures 30"Wx21"Dx30"H.

Circle No. 261 on Product Card



Hybrid Fire Grill

The Hybrid Fire Grill line from **Kalamazoo Outdoor Gourmet (Booth C4525)** has been redesigned for 2011, with a sleek exterior design and newly designed burners that deliver pinpoint power and even heat. More than 12 model variations feature two to four grill sizes. Amber lighting illuminates the control panels. The grills can cook with wood, charcoal and gas.

Circle No. 262 on Product Card



Linear-Style Profile Stone

The LedgeCut33 from **Eldorado Stone (Booth C5956)** is a highly textural yet contemporary, linear-style profile stone that installs with a clean, dry-stack application. The 33 in the profile name represents that each stone is three inches high and comes in three different lengths – 24", 18" and 12" – creating a random and natural running bond. The collection includes three colors: Sage, Birch and Dune.

Circle No. 263 on Product Card



Classic Vanity

Fairmont Designs (Booth C5070) has added the Town & Country ADA Wall Mount to its vanity line. The 36" wide classically styled vanity features a raised-panel center door that opens to provide storage and easy access to plumbing; open side shelves allow easily accessible additional storage.

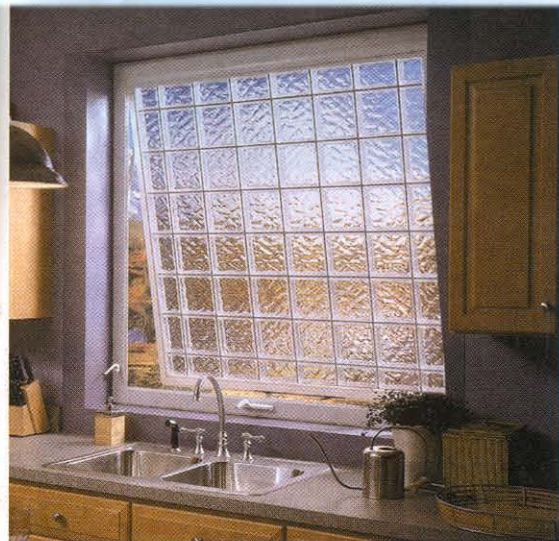
Circle No. 264 on Product Card



Bronze Sink

Lenova's (Booth C6856) Bronze Oyster Sink, inspired by the Seven Seas, is individually hand-cast and hand-finished so no two are alike. The sink, which measures 27"x17"x4", provides an ample basin.

Circle No. 265 on Product Card



Glass Block Windows

Operable acrylic block windows from **Hy-Lite, a U.S. Block Windows Co. (Booth C7184)**, are 70 percent lighter than glass block, according to the company. The windows, which provide decorative appeal and abundant natural light, are Energy-Star qualified in most areas.

Circle No. 266 on Product Card



LED Lighting System

The Loox LED system from **Hafele America Co. (Booth C5438)** uses a universal, worldwide power system where switches, lights and drivers are "plug and play." A unique identification system for the operating system allows the user to go by color-coded symbols rather than a specific plug. UL-listed, it allows 50,000 hours of lamp life and provides lower power consumption.

Circle No. 267 on Product Card