

kitchen & bath DESIGN NEWS

CELEBRATING OUR 30TH YEAR OF PUBLISHING EXCELLENCE

The leading business, design and product resource for the kitchen & bath trade

4/12

CYGNUS
BUSINESS MEDIA

Special Report

2012 NKBA DESIGN COMPETITION WINNERS 44

Designer's Notebook

58 | DESIGN FOR THE
EMERGING CHEF

Marketing

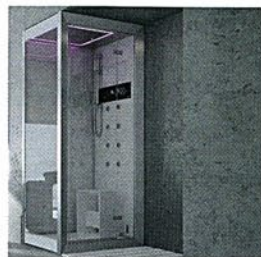
65 | ONLINE SAVVY
OFFERS MARKETING
ADVANTAGE



All **ThermaSol** Serenity Light & Music Systems is Bluetooth-enabled, making the steam shower experience easier to control. The Bluetooth technology allows users to wirelessly control the audio in their steam shower from anywhere in the bathroom. With the use of a waterproof case, mobile devices can be brought into the steam shower. Circle No. 168 on Product Card



The Serenity Air 11 Bath from **Aquatic** features an air bath system with air blower and heating system. Available in freestanding, undermount and drop-in options, the tub is available in a variety of colors and finishes. All freestanding baths have a remote blower, and air channels feature an antimicrobial coating and a purge and dry cycle. Circle No. 171 on Product Card



Purificare US presents the Jacuzzi-Frame shower cubicle concept that includes everything needed for a wellness experience. Frame includes a steam bath, vertical shiatsu hydro massage, cervical and lumbar hydro massage, energizing cascade, the raindrop effect of the central showerhead, multicolored shower with pre-set color cycles and aromatherapy effects. Circle No. 172 on Product Card



Graff's Aqua-Sense shower system is available in several configurations for a more personalized at-home spa experience. The Electronic System with Ceiling-Mounted Showerhead features an RGB LED color-changing effect controlled by a touch screen, and a USB port and speakers for portable music player connection. Circle No. 173 on Product Card



The **Essencia** line of therapeutic baths from **BainUltra** includes freestanding tubs with geometric exterior design and ergonomic interior. The inner shell features two seats that work as foot rests, and two armrests that run the length of the tub. A backrest with a built-in inverted V delivers a massage, as does the dual row of air jets in the tub. Circle No. 174 on Product Card

The Lawson drop-in bath from **Sterling** features a curving back and arm rests for increased comfort. The 5' long, 20" deep tub provides room for deep soaking, and is also available as an Air Massage bath with three-speed blower as well as a whirlpool bath with optional heater. The Lawson bath features a full deck, and is available in White, Kohler Almond and Kohler Biscuit. Circle No. 175 on Product Card



Porcher's Lutezia freestanding acrylic bathtub features a number of luxury bathing options, including the Premium Airbath System that incorporates Smooth Air massage technology, as well as chromatherapy. The tub is also available as a drop-in or with decorative bases. Circle No. 176 on Product Card



Duravit's Blue Moon Pool features a circular water pool in a square body. The pool reaches a depth of 20-1/8", allowing users to completely immerse themselves in water illuminated by soft lights under the water's surface. The water in the indoor/outdoor pool is not drained after bathing, and remains at a constant 38 degrees C. Circle No. 169 on Product Card

your whirlpool in your project."

Reyes, on the other hand, has seen a trend toward smaller freestanding tubs. "People [who] don't have that extra large bathroom still want a freestanding tub, and they need it to work in a smaller bathroom footprint. We are noticing sizes getting smaller in both freestanding and island or alcove configurations."

Kornowa says he's seen both larger and smaller projects recently. For instance, someone with an average-sized bathroom may take out the 5' tub alcove and put in a shower base, but they still want to have a tub to soak in. "They will pick one of our freestanding smaller tubs, so they can have their cake and eat it, too, so to speak," he says. At the same time, someone who has a larger bathroom may blow out a wall or cut into a closet, keeping the large tub but also adding the shower.

Payne says that, as a custom bath fabricator, Diamond Spas works on all shapes and sizes of tubs in manufacturing. "Some of our clients don't have as much space in their high-rise apartments, so they tend to go with a smaller tub, while some of our other clients who are professional athletes and are 6'8" tall need a 8'-long tub. The possibilities are endless," she says.

SAUNA AND STEAM

Sauna and steam trends have also been holding steady, and many of the same considerations as are seen in whirlpool and



The Acero bathtub from **Jacuzzi Luxury Bath** is available in a Soaking Bath, Pure Air, Whirlpool or a combination of all three in the Salon Spa. The tub includes integrated armrests, thin profile deck, deep well depth and chromatherapy options. The tub is offered for drop-in or undermount installation. Circle No. 177 on Product Card

air bath trends hold true for these products as well. Hass says that steam bath generators and controls are becoming increasingly popular with people who have chosen to eliminate tubs from their master bath in favor of customized showers. "Steam baths and saunas provide homeowners with an affordable way to create their own personal spa experience in their home. As in-home exercise rooms become more popular, saunas and steam baths are gaining in popularity as well," he adds.

While Hass says interest in infrared saunas is rapidly growing, Mark Raisanen, national sales manager for Helo Sauna and Steam in Cokato, MN says he has seen a strong shift back toward a traditional

sauna. Infrared is still a large part of his firm's business, he says, but in 2011, traditional saunas grew the fastest.

There is new flexibility in infrared saunas with what Raisanen calls custom IR. In the past, infrared has always been sold in limited sizes by most distributors, but there are now more options for customization. "People are now able to add infrared to any room of their house rather than having to have a fixed size that's just going to stand in the corner of their bedroom." Custom infrasauna is a new category that combines infrared and traditional sauna in one room.

As far as materials go, Hass says that Western Red Cedar remains the most popular for sauna rooms. Raisanen has seen some interest in more modern exteriors on saunas, with more

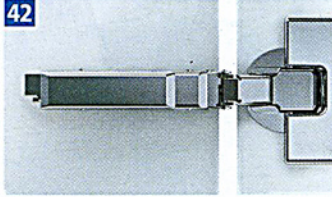


Diamond Spas' Dish Tub is outfitted with a whirlpool system that includes six jets, set at strategic places for relaxation and massage. Additional jets can be added. The interior features a gently sloped reclining back. The stainless steel tub features a hand-buffed finish. Circle No. 170 on Product Card

41



42



41. The Air King (Booth 2569) model AKF100D Deluxe Quiet dual-speed exhaust fan is Energy Star rated and includes an integral 36-watt fluorescent bulb. The fan features a contoured, low-profile grill design with a moonstone glass light lens. The unit also has a 4-watt nightlight feature.
Circle No. 260 on Product Card

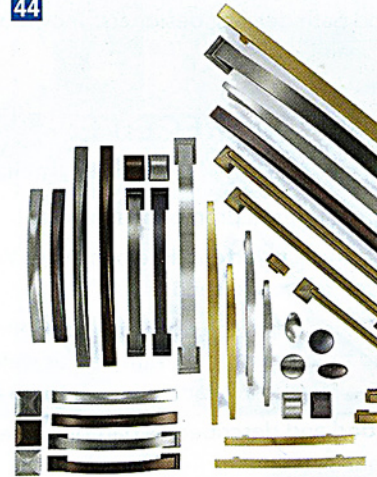
42. The Tiomos hinge by Grass America (Booth 2644) boasts a hidden soft-close mechanism that can be adjusted to meet individual specifications with the turn of a lever. The functional hardware allows for smooth closure, even from a 20-degree opening angle, according to the company.
Circle No. 261 on Product Card

43



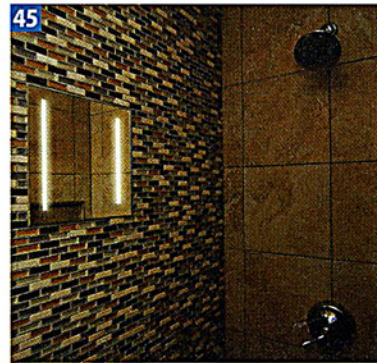
43. Antolini Luigi & C. S.p.a. (Booth 2849) teams up with Alessandro La Spada to enhance its Natura marble and granite collection luxury stoneware with a homogenous, continuous surface inspired by nature. Recent additions to the collection include tiles sketched with butterflies, snakes and forest leaves.
Circle No. 262 on Product Card

44



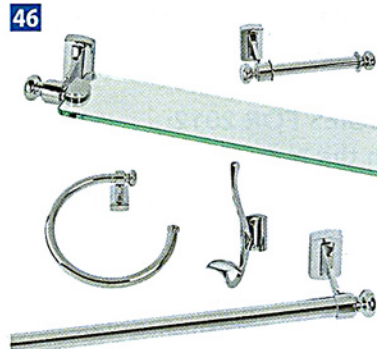
44. Amerock (Booth 4062) is offering a variety of extended sizes in knobs and pulls across four of its collections. Pulls ranging from 3" to 18" have been added to the Essential'Z, Candler and Extensity collections, and oversized knobs up to 1-1/2" have been added to the Candler and Extensity lines. The Átherly collection has been expanded to include a 128mm pull, with size extensions of its round and oval knobs as well.
Circle No. 263 on Product Card

45



45. ShowerLite from ClearMirror (Booth 3606) is a permanent, fog-free shower mirror with two soft-glowing light strips on the sides to provide subtle lighting. Its ultra-thin light source allows the mirror to install flush with the tile, and the back of the mirror contains light strips and a heating pad that warms the mirror to 102 degrees, eliminating condensation.
Circle No. 264 on Product Card

46



46. The Legacy Bath Hardware Collection from Atlas Homewares (Booth 1854) features clean, geometric lines and touches such as beveled edges and Polished Chrome or Brushed-Nickel finishes. The new collection, which includes a matching towel bar and ring, tissue paper holder, robe hook and shelf, complements the company's Legacy Collection of cabinet hardware.
Circle No. 265 on Product Card

NobleSeal® TS

Waterproofing for Steam Rooms, Spas, & Showers

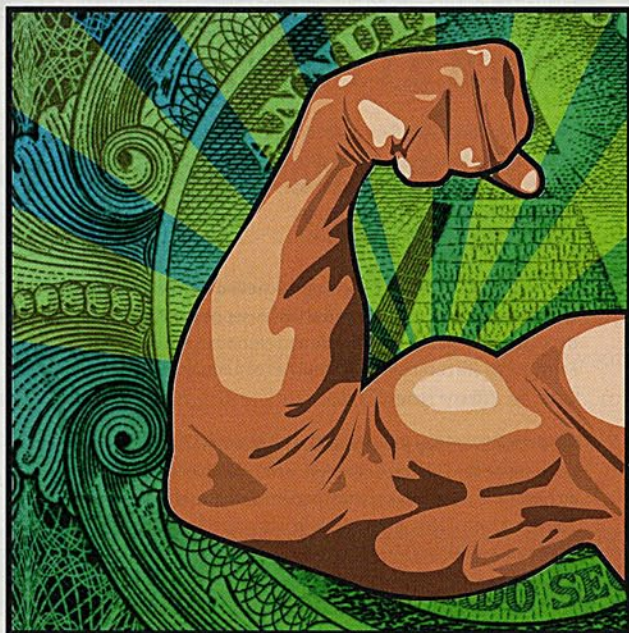
- CPE sheet membrane for critical waterproofing installations (commercial & residential)
Best moisture/vapor barrier (0.15 perms)
- Guaranteed not to rot, crack or deteriorate
- Use over common substrates including concrete, many plywood subfloors and radiant heat
- Meets ANSI A118.10
 - IAPMO Listing: UPC File No. 4339
 - ICC-ES PMG Listing: PMG -1059

800.878.5788 • www.noblecompany.com

Circle No. 56 on Product Card

Compete and Thrive in the New Economy

Gain Buying Power With Vendors



"SEN Membership Pumps Profits"



"The buying group has exposed us to products and vendor relationships we might never have been able to develop, improving our profitability and market strength."

Rebecca Lindquist, CMKBD, Duluth, MN
 rgl@lindquistandcompany.com
 218-728-5171



Better Your Bottom Line

Visit us at the K/BIS Booth #1737 in Chicago

Call Tom Blau, VP Membership • 252.636.3335
 Tblau@sendedesign.com • www.SENdesigngroup.com

Circle No. 61 on Product Card

59



59. The Lenova (Booth 3518)
 Cobblestone Green Onyx bath sink is crafted by master stone masons who use centuries-old cobblestone for the outside of the vessel. Inside, green onyx chips are adhered to the bowl's interior in a mosaic pattern. No two sinks are alike.
 Circle No. 278 on Product Card

60

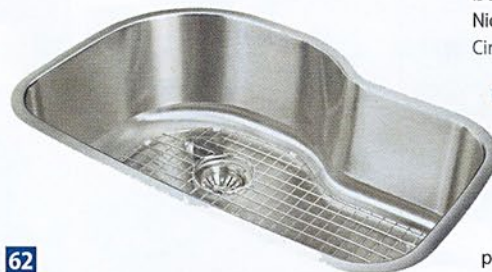


60. The Dacor (Booth 726)
 Distinctive 30" Gas Cooktop offers 54,000 BTU of overall heat output and is equipped with five high-power burners including SimmerSear. The cooktop features a one-piece spill basin and the company's exclusive, scratch-resistant, bead-blasted PermaClean finish. Die-cast stainless steel ergonomically angled controls and Illumina Indicator lights that glow in flame blue when a burner is on are among its safety features.
 Circle No. 279 on Product Card

61



61. Keeler decorative hardware from Belwith Products (Booth 1731) includes the Solid Brass Philippe Collection, which features three different sized pulls and a square knob. The collection is shown here in the Vintage Bronze Nickel finish and is also available in Antique Pearl Nickel.
 Circle No. 280 on Product Card



62. Artisan Manufacturing Corp.'s (Booth 711) Premium AR-3120 kitchen sink features 16-gauge, 304 grade stainless steel, as well as the company's proprietary V-Therm Shield for sound deadening and thermal retention. The 10"-deep sink is configured with an extra-deep double-sized bowl for extra large pans.
 Circle No. 281 on Product Card

62



63. The Obidos Bronze Vessel sink from Kallista (Booth 402) is named after the small hilltop town of Obidos, Portugal, and features a clean-lined, elliptical shape. Available in a Traditional or White Satin Bonze finish, the petite vessel measures 15-3/4"x10-7/8"
 Circle No. 282 on Product Card

63