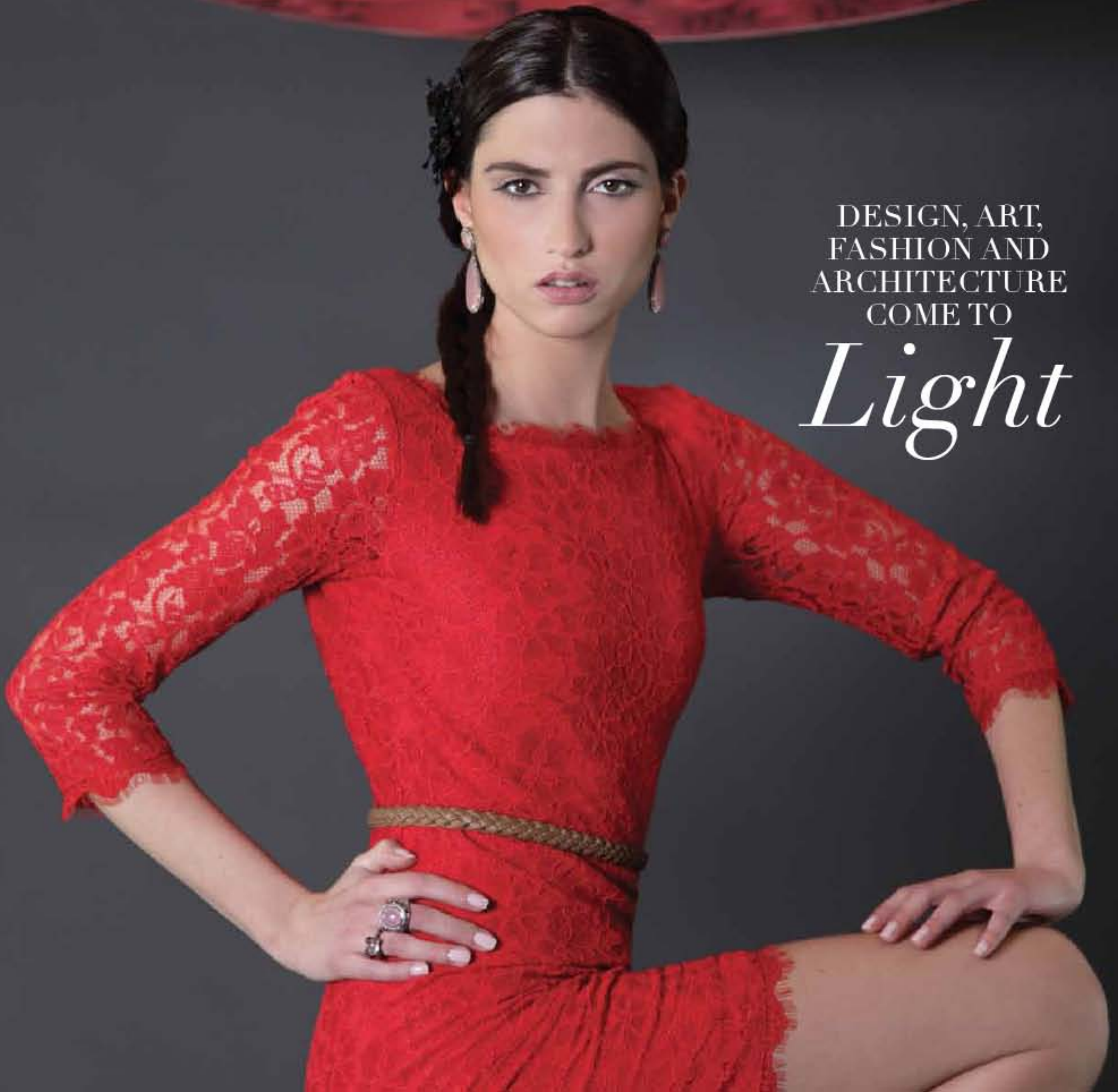


ON

A GLOBAL LIGHTING PUBLICATION

DESIGN, ART,
FASHION AND
ARCHITECTURE
COME TO
Light



METAL TELEPATHY FLUID MOVES LIKE NEVER BEFORE...

1. WRAP STAR

The Montone Oval becomes a beautiful bauble in any space; think of it as jewelry for a room. (Jacco Maris, globallighting.com, 914-591-0495)

2. PLAY LIST

Ingrid Donat's "Table de Chevet Disque, 2007" has music in its bronze bones. (Barry Friedman, Ltd.; barryfriedmanltd.com, 212-239-8600)

3. PANNING FOR GOLD

The Cole stool glimmers indoors and out, a hot prospect for any loggia or living room. (Made Goods, madegoods.com)

4. BLAME IT ON RIO

Texture is metal's sculptural friend in the Rio Collection, made of recycled aluminum. (DuVerre, duverre.com)

5. CLAIM TO FLAME

The brushed stainless steel sleekness of the Cubico DT fireplace croons, "Come on baby, light my fire!" (Safretti, safrettifireplaces.com)



6. SKIRTING THE ISSUE

The Archiduchaise chair made of aluminum, in a limited edition of 18, has a flair for the dramatic. (Designed by Xavier Lust, xavierlust.com)

7. COLOR CODES

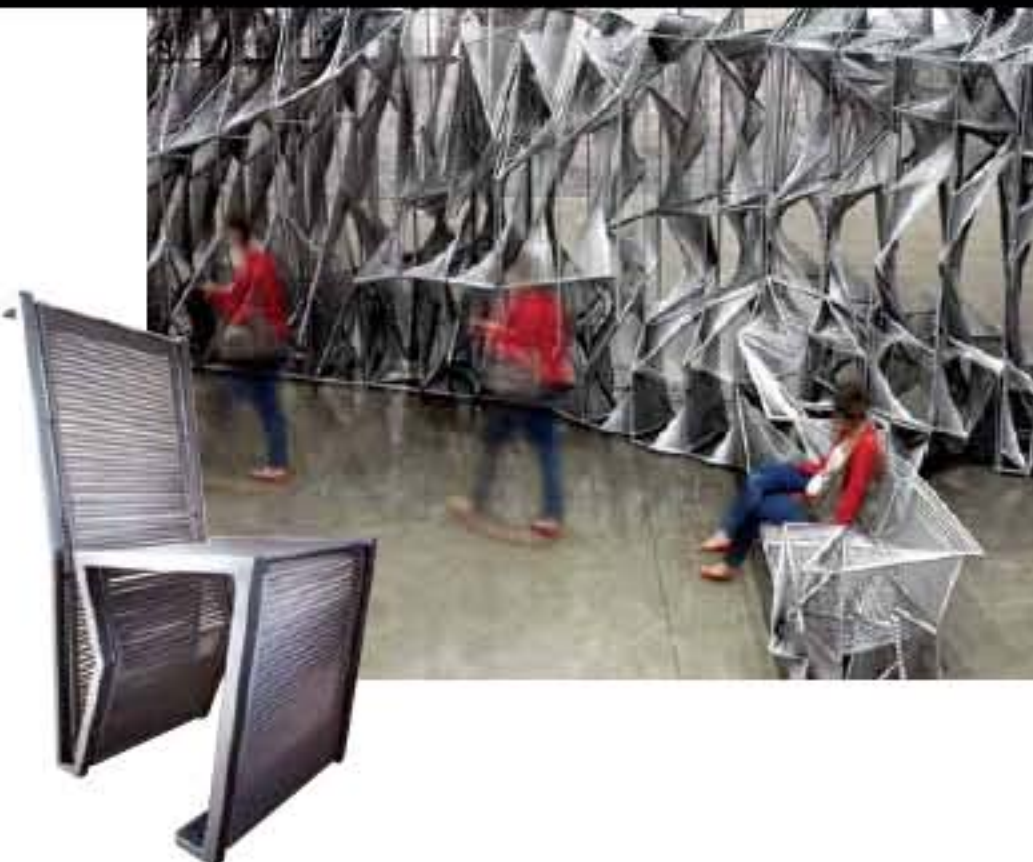
The PXL, designed by Fredrik Mattson, is primary perfection in painted aluminum. (Zero, globallighting.com, 914-591-0495)

8. BELT IT OUT!

The gracefulness of the Belt, made of Corten Steel, belies its strength and weather-worthiness. (B.lux, globallighting.com, 914-591-0495)

Art of the Steel

Dwayne Oyler and Jenny Wu of architectural firm Oyler Wu Collaborative fabricated "Screenplay," an installation on view at Industry Gallery in Los Angeles from March 19 through May 3, 2013. Their aim: to give the design process the opportunity to respond to the fabrication process. Here it must have exclaimed, "Morphed and magnificent!"



Tweet #GlobalLightingON to give us a shout-out about our new publication.