

Step-by-step caulking | Essential pruning tools

Old House

www.oldhouseonline.com

JOURNAL

THE ORIGINAL RESTORATION MAGAZINE

Get Outside!

Make old shutters good as new

Repair wood shingles

DECK OR PATIO: Which fits your house?

Lessons from a stunning restoration

Uncovering original colonial details

PLEASE RECYCLE THIS MAGAZINE
September 2012

5.99 US 6.99 CAN

Display until August 7, 2012





CLARE MARTIN PHOTO

Victorian

As with their interiors, Victorians didn't skimp on decking out their entryways. Arched-panel double entry doors were popular on styles from Second Empire to Italianate, and often were embellished with torch-style lights (which once burned gas) to warm the front steps, plus mail slots or boxes displaying echoes of the era's fine filigrees.



S-style door knocker, Baldwin Hardware, (800) 566-1986, baldwinhardware.com



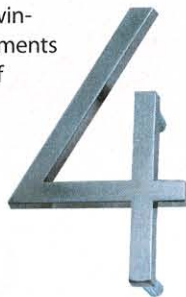
Wall-mount lantern, Savoy House, (800) 801-1621, savoyhouse.com



Vertical floral design mailbox, House of Antique Hardware, (888) 223-2545, hoah.biz

Mid-Century Modern

Much like the homes they opened upon, mid-century modern doors were sleek and streamlined, sometimes boasting geometric arrangements of small windows to add interest. Entryway embellishments were just as unfussy, although a bit of Atomic Age whimsy (in the form of a starburst backplate for the door-knob, perhaps) might sneak in.



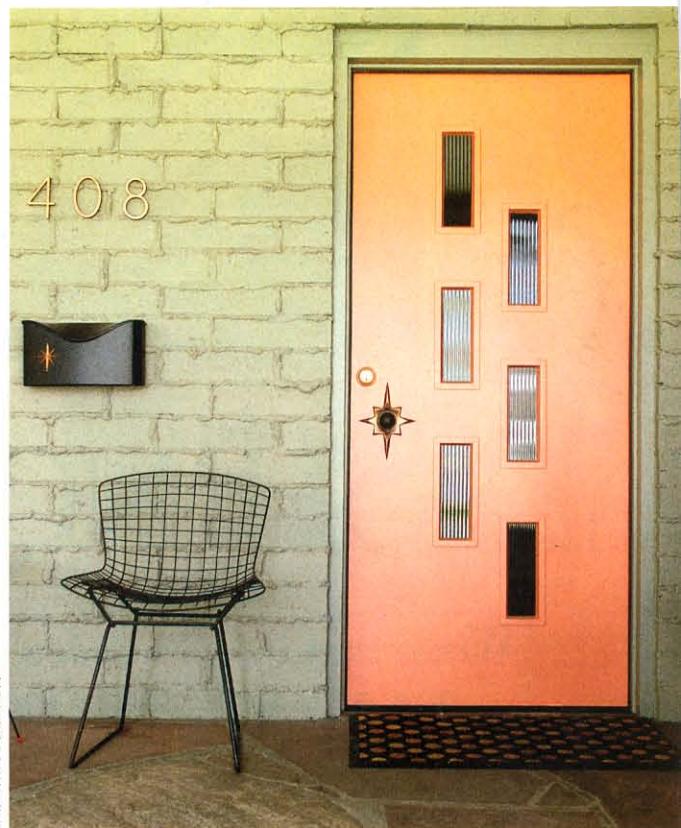
Avalon house numbers, Atlas Homewares, (800) 799-6755, atlashomewares.com



Titan door set, Rejuvenation, (888) 401-1900, rejuvenation.com



Fontenot door, Crestview Doors, (866) 454-6302, crestviewdoors.com



CRESTVIEW DOORS PHOTO