

January
2014

Vol. 20, Num. 1

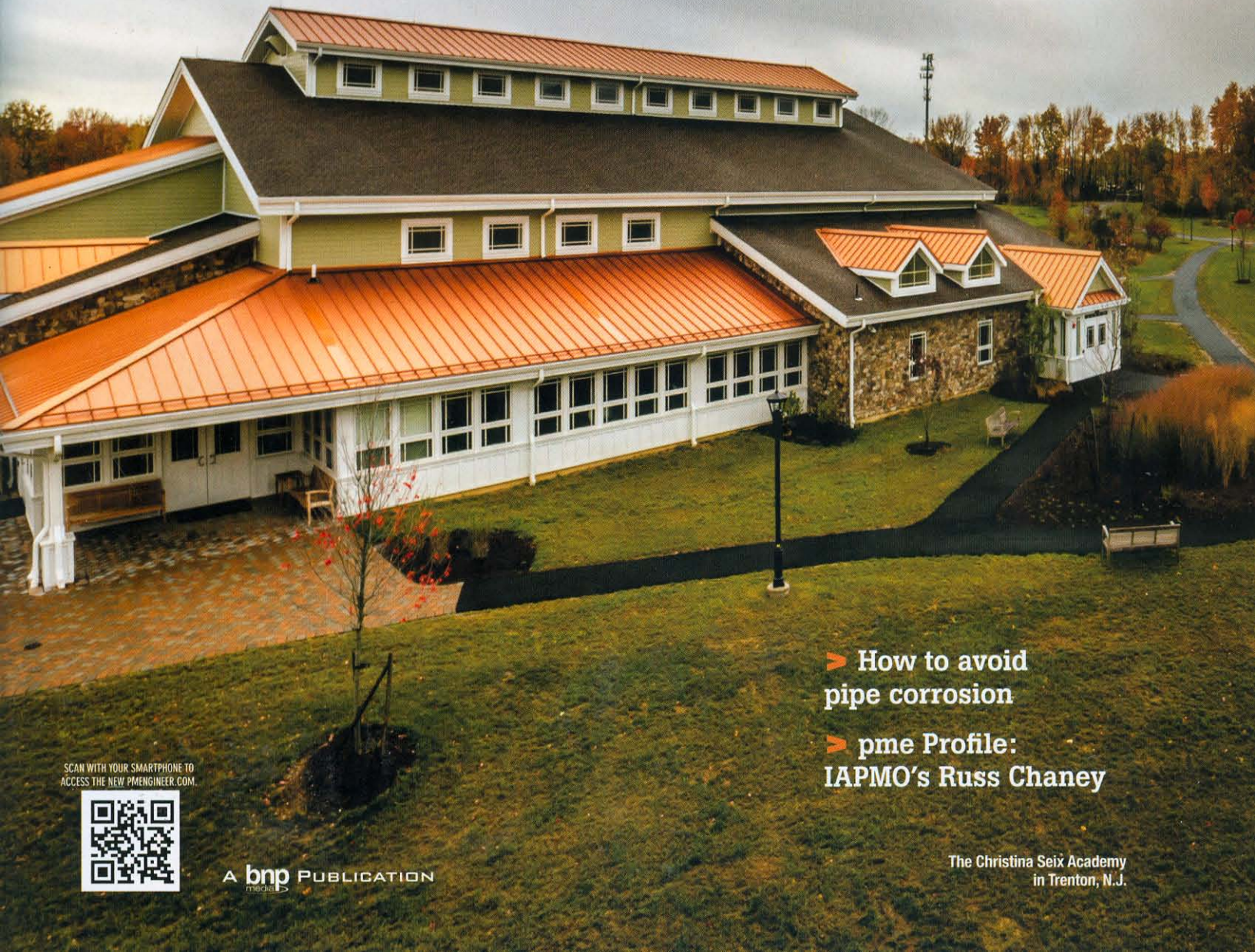
www.pmenginer.com

pme

PM Engineer - The must-read resource for engineering excellence

Head of the class

Geothermal systems provide two schools
that needed comfort, savings.



- > How to avoid pipe corrosion
- > pme Profile: IAPMO's Russ Chaney

SCAN WITH YOUR SMARTPHONE TO
ACCESS THE NEW PMENGINEER.COM.



A **bnp** PUBLICATION
media

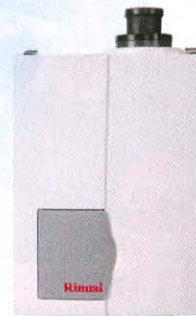
The Christina Seix Academy
in Trenton, N.J.

Product Preview: International Builders' Show



Hybrid energy system

Kohler Co. launches flushometers that feature Kohler's Hybrid Energy System. This new flushometer utilizes Kohler's Hybrid energy cell and provides an estimated 30-year battery lifespan. The Hybrid energy cell is installed within the body of existing Kohler flush valves. It features a Hybrid layered-capacitor, literally collecting the small electrical discharges of the battery. When the flushometer is activated for use, power is drawn from the capacitor. The Hybrid energy cell will be available on flushometers in both of Kohler's Wave and Tripoint touchless flushometer collections. **Kohler. www.kohler.com**



Condensing combi-boiler

Rinnai's E50C Condensing Combi Boiler features a high-efficiency combi boiler and is cost-effective for installation since it does not require primary-secondary piping in common installations. It's compatible with a 1/2" gas line and can be fueled by natural gas or propane designed for multifamily residences with 1.5 baths. The E50C boiler has a Btu input range from 13,600-50,000 and only requires a minimum gas pressure of 3". **Rinnai. www.rinnai.us**

Enhanced toilet

Gerber Plumbing Fixtures has enhanced its Avalanche toilet in time for the International Builders' Show. The toilet now features a new trapway that flushes and cleans the bowl better than before. The Avalanche also has Fluidmaster components in its tank, allowing Gerber to double the parts warranty from five to 10 years. **Gerber. www.gerberonline.com**



Linear drains

Quick Drain releases its alluring new collection of linear drain designs at IBS. Crafted from the same durable 304 stainless steel, Quick Drain unveils two new linear drains designed by world-renowned architect and designer Michael Graves. New for 2014, the Wave's linear drain now features an oil-rubbed bronze finish. The new line also will be available in brushed, polished and satin stainless steel in the standard lengths as well as custom up to 100." **Quick Drain. www.quickdrainusa.com**



Duplex grinder system

A compact system for sewage applications, the ProVore680 duplex system is powered by two 1 hp grinder pumps and features V-Slice cutter technology. It shreds difficult solids such as feminine products, rags and other unwanted debris. Operating on 115 or 230 volts, the system can be plugged into standard 20 amp home circuitry. The compact system is only 24" tall and ships complete with an alternating pump control unit. **Liberty Pumps. www.libertypumps.com**