

July  
2015

Vol. 21, Num. 7

# pmengineer

PM Engineer - The must-read resource for engineering excellence

## A view from the top

PEX piping helps  
apartment complex  
reach new heights.

A **bnp** PUBLICATION  
media

1508  
P148  
011  
410

SCAN WITH YOUR SMARTPHONE TO  
ACCESS PMENGINEER.COM



#BXNNPMP \*\*\*\*\*AUTO\*\*3-DIGIT 942  
#0000677228# VD 004 200 1508  
LINDA JENNINGS  
JENNINGS & COMPANY  
438 WOODLAND DRIVE  
SARASOTA FL 34234-3772

- > 2015 ISH China coverage
- > 2015 Radiant & Hydronics Report inside

SkyHouse Austin apartment complex in Austin, Texas.

# ROOF HYDRANT



- \* FROST FREE
- \* MEETS ASSE 1057 Type1
- \* NO DRAINING
- \* NO WINTERIZING
- \* NO VENTURI
- \* NO ADDED HARDWARE
- \* NO PROBLEM

It's a ...

## NO DRAINER!

Hoepfner Perfected Products  
P 408-847-7615\*F 408-847-0675 sales@freeze-flow.com

### FREEZE FLOW™ .com

## Get Social. Connect With Us!



[pmmag.com/connect](http://pmmag.com/connect)  
It's now easier than ever to stay up to date  
with the latest news and information.

Find us on Facebook, Twitter, Google+, LinkedIn and YouTube!

Like • Follow • Add to Circles • Join • Subscribe



pme

## Product Focus: Commercial Sinks



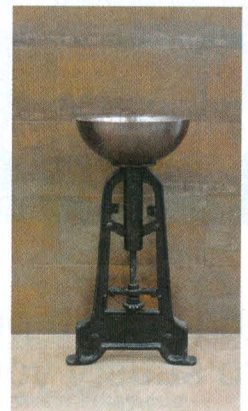
### Multi-user sink

Bradley's ELX-Series lavatory system is a contemporary alternative to china sinks and laminate countertops for commercial restrooms. The ELX-Series is a single-bowl multiuser design that offers contoured styling and personal hand-washing space. The bowl's seamless construction eliminates mold and delamination offers a hygienic washroom solution. The ELX-Series is made of Bradley's Terreon Solid Surface material that is durable and easy to repair. **Bradley.** [www.bradleycorp.com](http://www.bradleycorp.com)

### Pedestal stand with sink

Stone Forest's Industrial Pedestal features a trestle stand made of cast iron and a sink available in stainless, copper/stainless, antique dark or antique light copper. It stands 30" high, 19" wide and 14.5" deep. The hand-crafted basin can be made of 100% recycled metal or carved stone. The pedestal can be paired with a number of vessel sink designs crafted in a variety of materials, including granite, stainless steel and antiqued copper. A selection of matching cast-iron accessories including a towel bar, wall shelf, paper holder and side table will be available in 2015.

**Stone Forest.** [www.stoneforest.com](http://www.stoneforest.com)



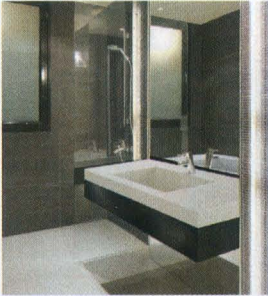
### Basin

Victoria + Albert's rimless Barcelona 48 vessel basin can be installed as a stand-alone piece or side-by-side on a vanity for a dramatic effect. It is crafted from Englishcast, a finely ground volcanic limestone mixed with resin. It is cast in one seamless piece that won't crack or flex. It is finished by hand to provide a glossy white solid surface that is highly durable and easy to clean. It measures 4 3/4" tall by 18 7/8" long by 11 7/8" wide. **Victoria + Albert.** [www.vandabaths.com](http://www.vandabaths.com)





## Product Focus: Commercial Sinks



### Integrated counter sinks

MTI Baths' integrated counter sinks connect one fixture to another in a seamless look and are compatible with most manufacturers' vanities. The integrated sink's length, width, deck height and bowl placement can be customized to any specification with custom colors and designs. The sinks are constructed of proprietary Engineered Solid Stone, a mixture of natural ground minerals and high-performance resins that are liquefied, poured and then hardened. The result is what looks and feels like molded stone. ESS is 100% solid, with no hollow spots, voids or surface coating. About 65% of the material is organic and utilizes a resin of combined renewable bio-derived and/or recycled content. **MTI Baths. [www.mtibaths.com](http://www.mtibaths.com)**

### Commercial-grade kitchen sink

Moen's M-Dura single-handle kitchen faucet and commercial-grade kitchen sink comes in a variety of configurations, including the pictured double-bowl sink. The sinks are made from high-quality stainless steel and feature SoundShield, a sound-deadening technology for premier noise reduction. The sinks are manufactured from durable 18- and 20-gauge stainless steel and fit most popular kitchen and pantry sizes. **Moen Commercial. [www.pro.moen.com](http://www.pro.moen.com)**



## EXPANDING OUR REACH ... ADVANCE TABCO UNDERBAR EQUIPMENT



**NOW AVAILABLE - UNDERBAR EQUIPMENT**  
THE SAME SUPERIOR QUALITY AND EXCEPTIONAL  
VALUE THAT COMES WITH ALL ADVANCE TABCO PRODUCTS



Leading the Industry in High Quality Stainless Steel Fabrication

1-800-645-3166 | [info@advancetabco.com](mailto:info@advancetabco.com) | [www.advancetabco.com](http://www.advancetabco.com)