

Professional Remodeler[®]

26 EXCLUSIVE RESEARCH:

How RRP is affecting remodelers' business

36 DESIGN AWARDS PORTFOLIO:

Aging D.C. townhouse gets efficient upgrade

40 SIDING TRENDS:

Durability, value top homeowner concerns

The new regulatory climate

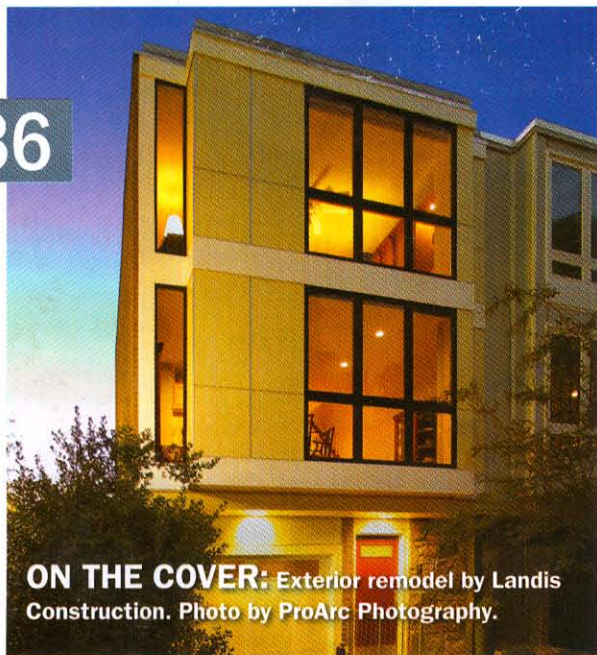
What you need to know about lead paint, fall protection and other regulations in 2012

Professional Remodeler

CONTENTS

FEBRUARY 2012

36



ON THE COVER: Exterior remodel by Landis Construction. Photo by ProArc Photography.

30



50



52



54



56



THE LEADING EDGE

- 10 Mark Richardson:** 5 cures for happiness in remodeling
- 12 Craig Durosko:** How Net Promoter can help increase referrals
- 14 David Lupberger:** Making lemonade from economic lemons
- 16 Industry News:** Mortgage fees will pay for payroll tax cut
- 18 Economic Update:** Realtors revise five years of home sales data
- 19 Building Science:** Do houses need to breathe?
- 20 Technology:** Will Kindle Fire work for remodelers?

FEATURES

- 22 Cover Story: 6 rules to watch in 2012**
Regulations that remodelers need to pay attention to this year
- 26 Exclusive Research: Lead paint**
Remodelers say RRP is costing jobs, raising prices
- 30 Project Spotlight: Home made**
Old-house flavor enhances the remodel of a chef's kitchen
- 36 Design Awards Portfolio: Façade Facelift**
Aging D.C. townhouse gets upgrade in aesthetics and efficiency
- 40 Product Trends: Siding**
Durability, value top homeowner concerns
- 48 Kitchen & Bath Design: Kitchen islands**
Archipelago of ideas and functions

NEW PRODUCTS

- 46 Exterior Products**
- 50 Product Introductions**
- 52 Faucets & Fixtures**
- 54 Lighting**
- 56 Flooring**

EDITORIAL

- 6 Sweet:** Digging in



6

6 ODL Eclectic door glass

ODL's latest door glass collection, Eclectic, is a fusion of blended cultures, combined forms, and historical elements. The collection includes several designs, including Bellflower, a blend of classic motifs and old-world elements with vibrant color, and Casablanca (pictured), which features Moroccan design influences and a two-color silkscreen for a fresh, contemporary look.

Circle No. 815 for more information



7

7 Viega Poly PEX Press

Viega's new Poly PEX Press system for joining cross-linked polyethylene (PEX) tubing includes the company's Smart Connect feature, which enables installers to easily spot unpressed connections during pressure testing by allowing water to flow past the fitting on a missed connection. The fittings feature good corrosion resistance and compliance with Zero Lead requirements, as well as NSF approval. Poly PEX Press is suitable for potable water and radiant heating applications in residential and light commercial projects.

Circle No. 816 for more information

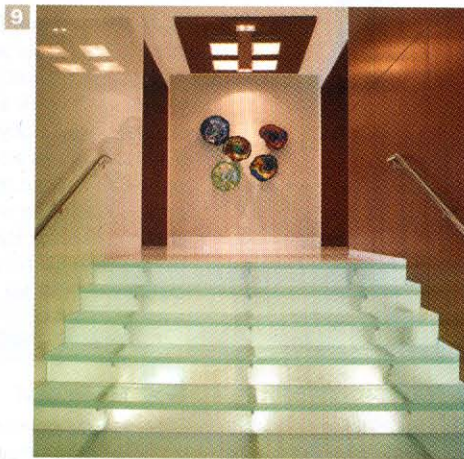


8

8 WinDoor Vinyl Tilt & Turn Window

WinDoor's Vinyl Tilt & Turn Window is rated as an R-5 super-insulated unit and is certified for high-wind areas. The unit tilts in from the top for controlled ventilation or turns inward from the side more than 90 degrees for maximum ventilation, egress, and easy cleaning. The window is available for large openings up to 54x80 inches.

Circle No. 817 for more information



9

9 ThinkGlass glass stairs

Despite their deceptively delicate appearance, ThinkGlass steps are surprisingly strong with a textured finish that offers a safe, slip-resistant surface. ThinkGlass staircases have smooth, polished edges without the visible lines common in laminated glass stair treads. Staircases may be curved, straight or spiral, and may be made entirely of glass or simply accented with a few glass steps. ThinkGlass designers can also imbed LED lighting within the steps.

Circle No. 818 for more information



10

10 Trex Enhance

Trex Enhance has a three-sided shell that protects against staining, fading and mold. Enhance won't rot, warp, crack or splinter. The product requires no sanding, staining or painting, and its protective shell defends against severe weather and heavy foot traffic while being extremely low maintenance. The entire Enhance decking collection is backed by a 20-year limited fade and stain warranty.

Circle No. 819 for more information

Flooring



1 Zinfandel Tigerwood flooring

BR-111's new Zinfandel Tigerwood flooring takes traditional Tigerwood engineered wood flooring and, using a light scraping technique, adds a luxurious French bleed. Zinfandel Tigerwood is 5 inches wide and 1/2-inch thick, and comes in board lengths from 12 to 71 inches. The engineered hand-scraped flooring is backed by a 35-year warranty.

Circle No. 830 for more information

2 Armstrong Alterna Reserve

Armstrong's Alterna Reserve is a vinyl alternative to ceramic and stone tile. Alterna Reserve replicates the colors and textures of travertine stone, quartz and slate in three patterns: Moselle Valley, Cuarzo and Classico Travertine. No two tiles are the same, which allows for the creation of a floor with more random, natural visuals, just like in nature.

Circle No. 831 for more information

3 Daltile Ayers Rock

Ayers Rock is one of six new tile collections from Daltile. Combining the look of natural stone with the easy maintenance of glazed porcelain, Ayers Rock is designed for both residential and commercial applications. The tile features Reveal Imaging, providing a realistic natural slate look and texture. Available in five sizes and a variety of mosaics, decorative accents, and trim options.

Circle No. 832 for more information

4 Bondera PRO Tile MatSet

Bondera PRO Tile MatSet from Grace Construction Products is a double-sided, pressure sensitive peel-and-stick tiling adhesive on a roll created specifically for professional use. Bondera PRO eliminates the need for mortar, mastic and thin set, and repels water and resists cracking. Bondera PRO Tile MatSet is available in 30 square foot rolls.

Circle No. 833 for more information

5 Centiva Atlantis

Centiva has added new colors to its Atlantis series. Joining Atlantis Beige and Atlantis Bone (formerly Atlantis), are four new colorations: Atlantis Blue, Atlantis Metal, Atlantis Brown and Atlantis Gray. The design features a washed concrete look in a linear format. Atlantis is available in standard sizes of 12"x 12", 12"x 18", 12"x 36" and 18"x 18". Additional custom sizes are also available.

Circle No. 834 for more information