

Professional Remodeler®

www.ProRemodeler.com

OCTOBER 2014

2014 DESIGN AWARDS

Our top projects from
around the country

18 DAVID LUPBERGER:
Transition planning

20 BUILDING SCIENCE:
Selling energy efficiency

58 K&B DESIGN:
Measuring design space

#BXNHFU *****GAR-RT L01**C-009
HPR2561773 4#
DCL PFR 1 OCT14 0022 #75 #15362
SHELLY JOHNSON - PR COORDINATOR
JENNINGS AND COMPANY
436 WOODLAND DRIVE
SARASOTA FL 34234-3772

 SCRANTON
GILLETTE
COMMUNICATIONS
SGC HORIZON



2013 & 2012 JESSE H. NEAL
AWARD WINNER

American Standard Champion PRO Toilets →

American Standard's newest Champion PRO high efficiency toilets (HETs) complement traditional bathroom decor, from the colonial-style Portsmouth to the classically curved Retrospect. Both models boast the industry's largest siphonic trapway at 2³/₈ inches plus a 4-inch-diameter flush valve, making the toilet virtually clog-free. As HETs, both toilets utilize just 1.28 gpf. Sizes include standard 15-inch height and 16½-inch elongated and round front Right Height models. Toilet colors include white and linen.

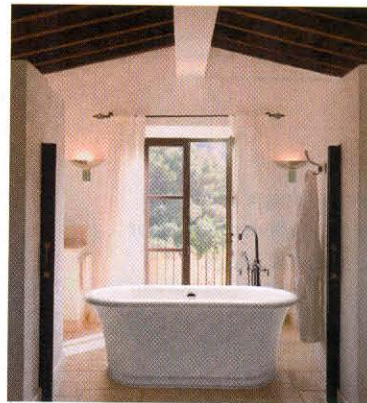
For more information, No. 800 on reader service card.



↑ Effeti Screen

The Screen system from Effeti keeps an open feeling in the kitchen while hiding kitchen activity from guests. All aspects of the unit are customizable, including height, length, materials, and finishes. The slot formed by the negative detail below the edge of the workstation functions as the door-pull for the kitchen cupboards and drawers. The backside of the unit features customizable wood paneling and shelving that adds warmth to the entertaining area. Effeti offers a wide range of colors and wood veneers.

For more information, No. 801 on reader service card.



← Laney 2 Pedestal Tub

This new one-piece acrylic tub from MTI Baths comes standard as a soaking tub but can also be ordered as an air bath. MTI offers its full line of therapy options for users, including Chromatherapy, Stereo H₂O and the Radiance heating system. Other optional add-ons range from a floor-mounted high-flow tub filler or virtual spout to decorative towel and grab bars and a bath pillow. Homeowners can choose a freestanding or drop-in model.

For more information, No. 802 on reader service card.



← Aquatic FRP Pans

The ADA/ANSI-compliant F6034DPAN and F3636DPAN shower pans from Aquatic improve accessibility for all users while still maintaining good design. The F6034DPAN provides a roll-in option for wheelchair users with a wide opening and low threshold. The F3636DPAN is a transfer pan engineered to accommodate transfer from a wheelchair to a bath seat.

For more information, No. 803 on reader service card.



↑ Sterling ComforTrack Technology

Increased safety and ease of use on the shower door are the benefits of Sterling's new ComforTrack Technology, providing a cushioned track that allows users to sit, lean, or kneel on it comfortably. At the same time, the material is highly durable to resist daily wear and tear, and is easy to clean thanks to a low profile. ComforTrack Technology is offered on Sterling's Prevail in silver or nickel finishes with four glass patterns.

For more information, No. 804 on reader service card.

ONE BIT. TWO TIPS.

© 2014 Irwin Industrial Tool Company. All Rights Reserved.

DOUBLE-ENDED BITS



DOUBLE-ENDED VERSATILITY

IRWIN Impact Performance Series™ double-ended bits mean fewer trips to the tool bag. And the DoubleLok Technology™ ensures both ends of the bit lock securely into impact drivers and quick-change chucks.



SEE THE FULL RANGE OF BITS AT IRWIN.COM

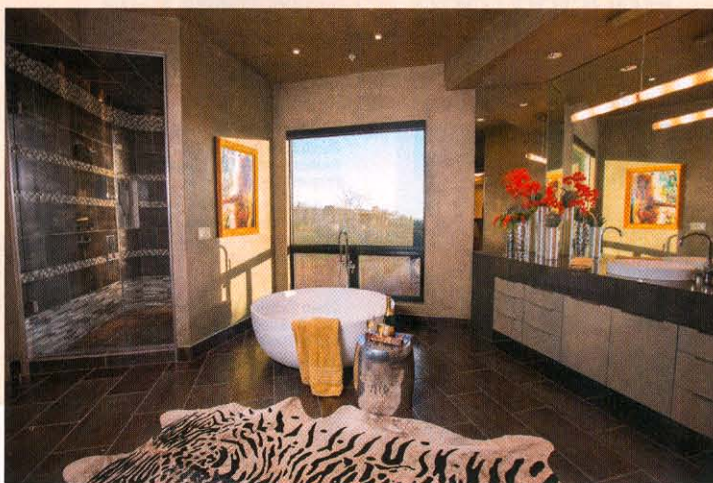
circle 770

BATHROOM \$30,000 TO \$60,000

PURE DESIGN ENVIRONMENTS // EDEN PRAIRIE, MINN.

PROJECT LOCATION: SCOTTSDALE, ARIZ.

Although space was plentiful, this master bathroom had a compartmentalized layout that screamed 1990s and was not user-friendly. The owner wanted to balance the home's modern, sculptural architecture with a masculine, contemporary style. A round, freestanding tub replaced a non-functioning Jacuzzi and now acts as the anchor of the space. Asymmetrical vanities covered in anigre veneer and stained appropriately pull in the desert colors of the home's mountain location, while linear metallic porcelain tile flooring adds an industrial edge. Round vessel



lavatories and a quartz top help balance the space. Leaky windows, old fixtures, a fireplace wall, and out-of-date draperies were all replaced. Natural light abounds in the space with a large picture window in the main area and a large window in the concealed stool compartment.

FINISHED BASEMENT

SILENT RIVERS DESIGN + BUILD // CLIVE, IOWA

PROJECT LOCATION: WEST DES MOINES, IOWA

A complete basement remodel turned an expansive, non-descript space into a display of the homeowners' passions. The new design links very distinct spaces such as a contemporary theater room with a more traditional wine cellar. A redefined hearth room features a fireplace surrounded by a mix of light wood and cultured stone. The theater room, situated behind the hearth wall, has a valence over the doorway to evoke the idea of a theater marquee. Inside, the theater is isolated from the adjacent spaces to prevent transferring sound vibration, especially to the wine room. A wine tasting space primes the transition to the main wine cellar with a wood vaulted ceiling. A reused wine barrel for a bar support and a wine-infused baseball bat act as conversation topics with guests.

