

Qualified Remodeler[®]

QualifiedRemodeler.com

February 2016

CENTERS OF INFLUENCE

Two top remodelers show how to cultivate reciprocal local relationships. • 24

HOME IMPROVEMENT PRO • 40

New Room Adds Function • 30

Bath Faucet Trends • 44



What's New

Hammers designed to absorb strike shock, vibrations

FISKARS expands into the hardware category with a line of striking tools that includes general, framing and finishing hammers. Featuring the IsoCore Shock Control System, an insulation sleeve located in the middle of the handle captures initial strike shock while a dual-layer handle is formulated with insulating materials to dampen vibration. Smooth or milled strike face options are available, and each hammer includes a magnetic nail starter and rip claw. Hammers are available in 13.5-, 15.5- and 16-in. lengths and 16-, 20- and 22-oz. weights.

Circle 11 on inquiry card



Vinyl flooring available in wide planks

CARLISLE WIDE PLANK FLOORS announces its Versallia wide plank luxury vinyl flooring, which is water-, scratch-, stain- and scuff-resistant with embossed textures. Using the character of oak as the canvas, the Oak Visions Collection displays the species' grain pattern in six hues. The vinyl flooring will be available in 60-in. lengths and 7.25-in. widths, is recyclable and includes a 15-year warranty.

Circle 12 on inquiry card



Visual impact with tile

DALTILE brings visual interest to monochromatic fields with the introduction of Bee Hive in a 24- by 20-in. format. The ColorBody porcelain can be used on floors and walls and is offered in six colors: white, ivory, taupe, ashgrey, gray and black. By mixing and matching the colors, the hexagon-shaped tile creates visual impact. Tiles are 3/8 in. thick, and the minimum grout joint recommendation is 1/8 in. Bee Hive is one of six recent product introductions from the company.

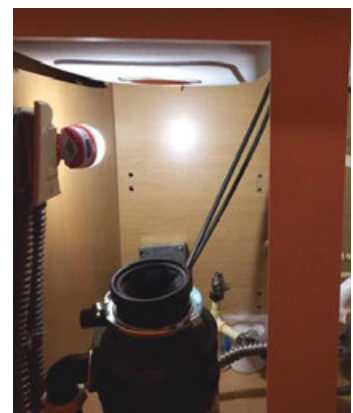
Circle 13 on inquiry card



Expanded finish selection, custom paint program for cabinetry

WELLBORN FOREST PRODUCTS launches its latest catalog with new door styles, accessories and cabinet configuration options. Box construction upgrades have been made, and an expanded selection of finishes are added. A custom paint color program in partnership with Sherwin-Williams will provide more choices for designers and their clients. Three of the door styles being introduced are Waverly, Rochester and Devon.

Circle 14 on inquiry card



Mini, versatile jobsite light

OLYMPIA PRODUCTS introduces its WD180 mini-lantern, which can be positioned sitting upright, with feet kicked out to light at an angle, hung using the built-in D-ring or mounted on a metal surface via its magnetic base. The mini-lantern puts out 180 lumens and has four light settings – SOS, low, medium and high. It is rechargeable with a built-in micro-USB charging port.

Circle 15 on inquiry card



Energy Star-qualified occupancy sensor

The LED Ceiling Occupancy Sensor from **LEVITON** automatically senses movement to turn lights on, making it suitable for use in closets, basements, attics, storage areas and more. Part of the company's line of Ceiling Lampholders for closets and closed spaces, the sensor offers a 284-degree field of view, and switches on when motion is detected and off after three minutes of inactivity. It includes a two-year limited product warranty and is Energy Star qualified.

Circle 16 on inquiry card

Pull-down faucet mimics sculptures

PFISTER rethought the interaction of a faucet handle with a fixture's body with the introduction of the Kai kitchen faucet, an expansion of the company's Showroom Line. Inspired by artistic attributes found in sculptures, the kitchen faucet has an integrated handle while delivering a contemporary, modern appearance. The three-function pull-down sprayhead – spray, pause and stream functions – retracts inside the faucet's flared spout and has a high-gloss pillowed texture with a matte black finish. MultiMount 1-, 2-, 3- and 4-hole installations are available.

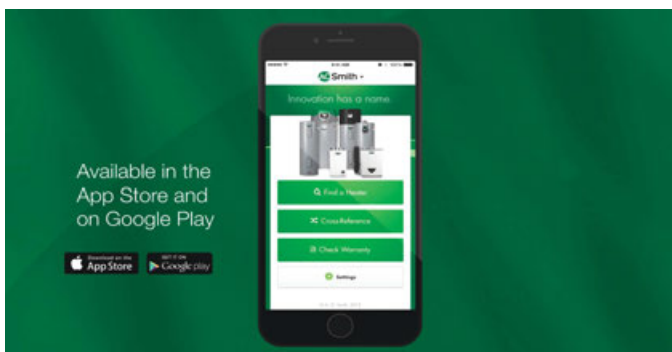
Circle 17 on inquiry card



Round or square knobs with simple silhouettes

The Chunky Knob Collection from **ATLAS HOMEWARES** has clean lines and simple silhouettes, allowing them to coordinate with many kitchen and bathroom décors. Offered in round and square configurations, the wide base of the knob is nearly the same dimension as the handle. Three sizes are available – ranging from 1 to 1 13/16 in. – and finish options are brushed nickel, polished chrome and polished nickel.

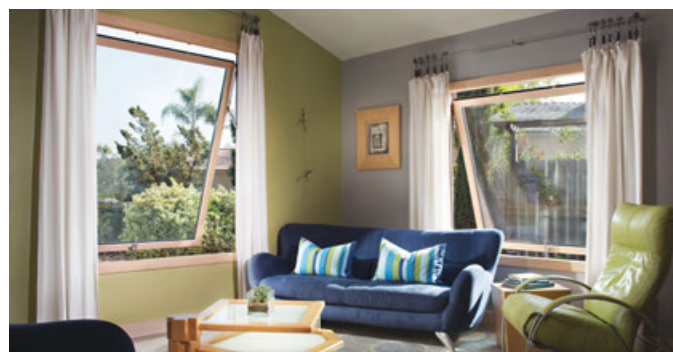
Circle 18 on inquiry card



App aids water heater selection

A. O. SMITH designs its Xpert Water Heater Selection Tool – available at hotwater.com/Xpert or on the company's app for iOS and Android – to help contractors lead their customers through the process of choosing a water heater. Eight questions about hot water usage, available space and power sources lead to data points that recommend the top three water heaters in the categories of "Meets Your Needs," "More Hot Water" and "Lower Energy Costs." The app also includes a product cross-reference tool and warranty check functionality.

Circle 19 on inquiry card



Window, door product launch

REVEAL WINDOWS & DOORS by Pacific Architectural Millwork introduces its M-Series Windows and Slide & Seal Door System as it launches into the window and door segment. The windows are offered in all wood or wood with exterior aluminum cladding with customization that includes wood species, glazing, hardware finish and accessories. Capable of being fully automated, the aluminum-wood Slide & Seal Door System panels slide on recessed, stainless steel tracks and automatically seal in the closed position.

Circle 20 on inquiry card

➔ Find out more about these products and THOUSANDS more via our online directory: ForResidentialPros.com/directory