

RENOVATION STYLE

The
**ULTIMATE
GUIDE**
To

Kitchens & Baths

2012
Display until June 5
\$5.99 U.S.



bhg.com/renstyle

9 Amazing Makeovers

- Ideas to Transform Your Space
- Before-and-After Floor Plans
- Great Products for Easy Upgrades

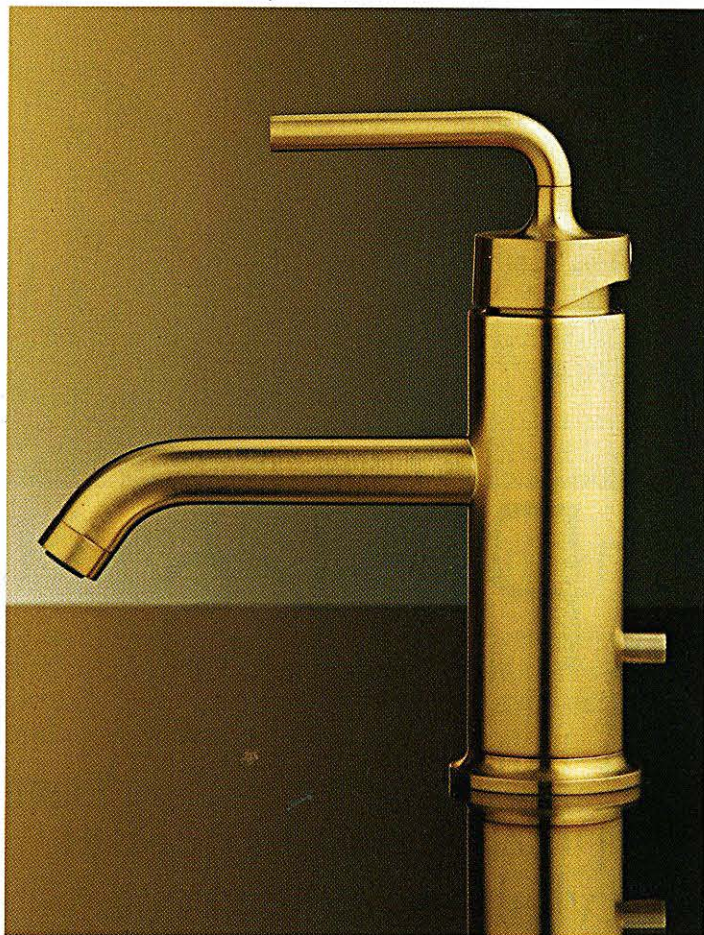
Fashionable Metals

Faucet

kohler.com

An of-the-moment update on traditional brass, the Vibrant Moderne Brushed Gold finish gives this faucet an architectural presence.

Purist single-control lavatory faucet, Kohler, \$540



Pulls

atlashomewares.com

Sleek and silvery, these door and drawer pulls pair with cabinets of all colors and materials. They're long enough to hold a hand towel in a pinch.

Left to right: Sutton Place pull, \$32; Fulcrum pull, \$27; Thin Square Long Rail pull, \$38, all from Atlas Homewares

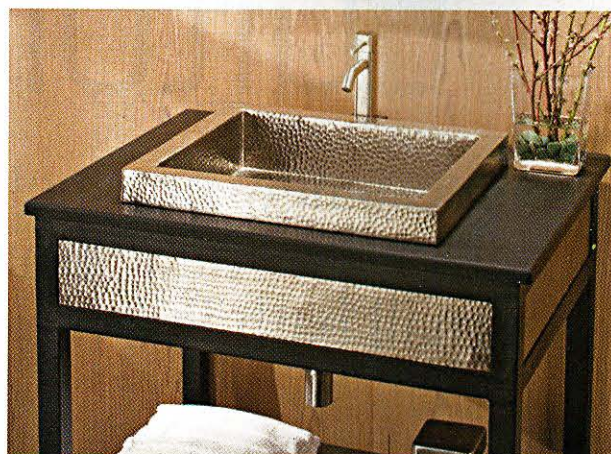


Vanity Base and Sink

nativetrails.net

The Cuzco vanity features hand-forged accents of copper and wrought iron. A hammered texture on the Tarta sink gives the finish brilliance.

Cuzco Vanity Base in Brushed Nickel, Native Trails, \$1,085–\$1,375, depending on size; Tarta sink in Brushed Nickel, Native Trails, \$1,598



Surface Trends

Explore surface options with accent colors, compelling textures, and unexpected materials.

Glass

thinkglass.com

Thick slabs of cast glass create a sparkling surface. Colorful abstract designs can be integrated into the glass countertop.

ThinkGlass, Mailhot, \$225–\$325 per square foot, depending on thickness, detailing, and hole configuration



Wood

glumber.com

The choices for wood counters go well beyond butcher block. Simple periodic maintenance keeps installations such as this end-grain Sapele Mahogany in peak condition.

Sapele Mahogany, Glumber, \$160 per square foot, as shown

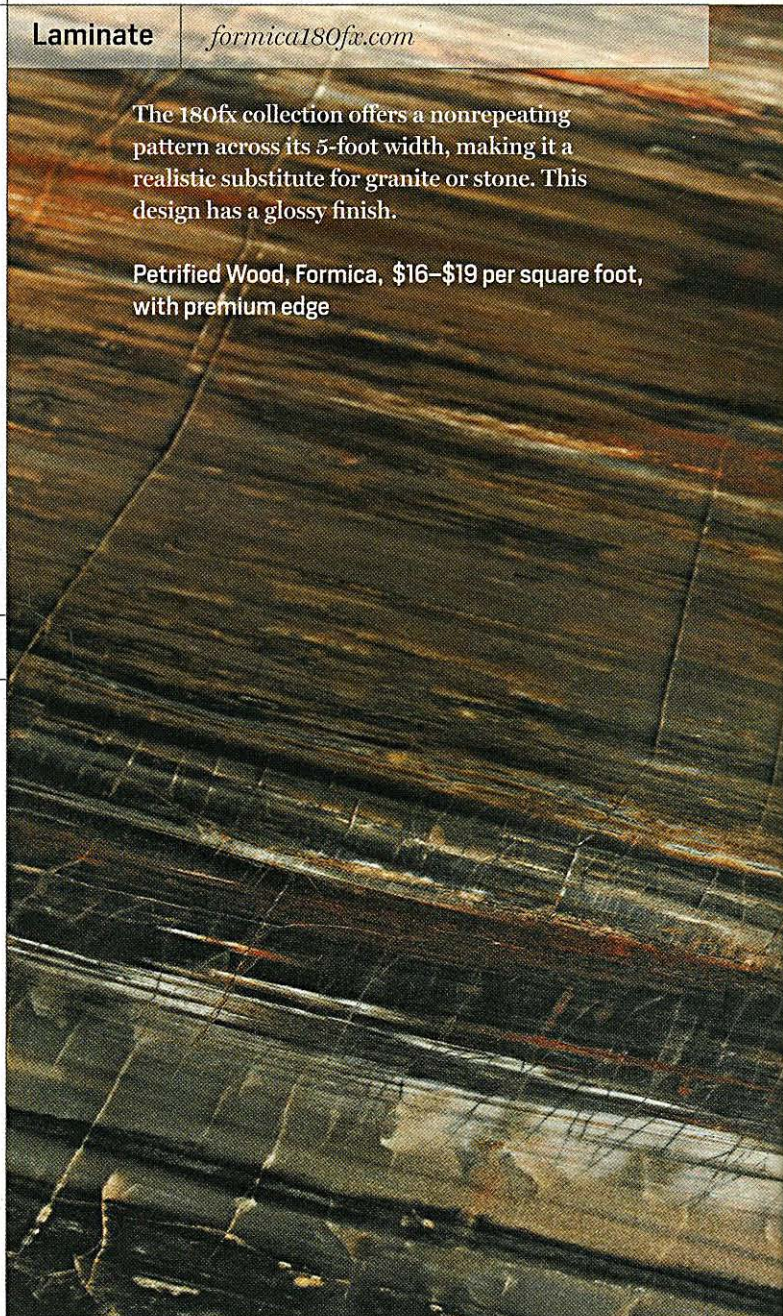


Laminate

formica180fx.com

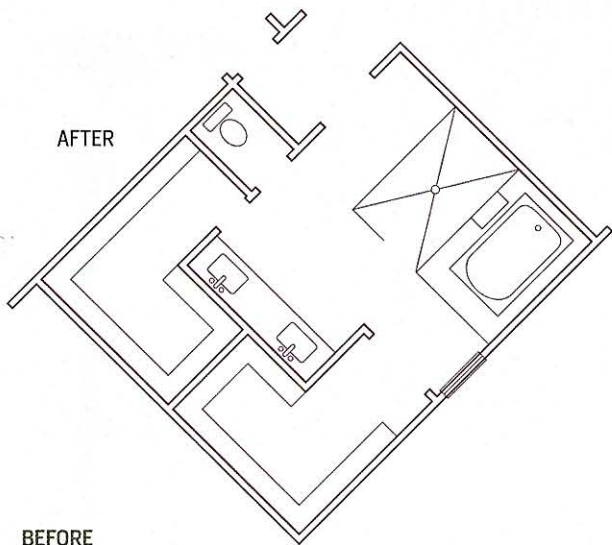
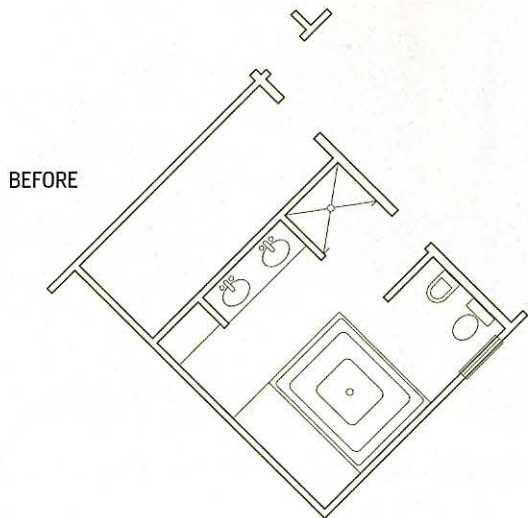
The 180fx collection offers a nonrepeating pattern across its 5-foot width, making it a realistic substitute for granite or stone. This design has a glossy finish.

Petrified Wood, Formica, \$16–\$19 per square foot, with premium edge



The Plans, *Before & After*

Borrowing space from an oversize master bedroom made way for a luxuriously large bathroom with a shower and bathtub “wet room” that’s as pampering as it is practical.



BEFORE

The master bathroom was large but poorly arranged.

Double openings to the master bedroom from the closet and the bath created traffic jams.

AFTER

A watery oasis on one side of the space places the tub with a view of the woods and the adjacent shower as the entry to the tub.

The double-sink vanity floats in the middle of the space and provides access from both sides to L-shaped walk-in closets.

A toilet closet provides privacy.

INTERIOR DESIGN LORI GRAHAM

Sleek lines and simple materials perfectly complement a modern bathroom.

Table

bmind.com

The removable top of this butler's table can be used as a tray—perhaps to transport candles and reading material tubside. This model has a 24×40-inch top; the mirror-polished stainless-steel base adjusts in height from 14 to 42 inches.

Butler's table, B&N Industries, Inc., \$490



Pulls

atlashomewares.com

The tailored lines of the Sutton Place door and drawer pulls add modern sophistication.

Sutton Place pulls, Atlas Homewares, \$9–\$175, depending on size and finish

