

RESIDENTIAL BUILDING

JULY 2013

PRODUCTS AND TECHNOLOGY



**INSIDE
TRENDS**
FIREPLACE FEATURES

NEWS
RENOVATION HABITS
ACROSS THE POND

**PROJECT OF
THE MONTH**
A MAINE HOME WITH
TRADITIONAL
CHARM

**PRODUCT
REVIEW**
CHOOSING THE
RIGHT INSULATION



**MADE
IN
AMERICA**

Grab These

New cabinet hardware with distinctive style

Tanja Kern



In the big picture of design and construction projects, choosing cabinetry hardware is one detail that can get quickly lost in the quagmire of decisions, timelines and budget items. However, this detail for the kitchen and bath is the very accessory that can make the most personalized style statement.

Knobs and pulls can change the overall aesthetic in a space faster than you can refinish the surfaces you attach them to. That's why it makes sense for your buyers to pause a moment and fuss over this finer point of hardware design.

Softer shapes and finishes are a major trend showing up in hardware design this year, and this gentler touch is showing up in color, finishes and textures. It's a contrast to the more heavy-handed, polished finishes and sharper shapes we've seen in recent years.

Atlanta-based Amerock's new caramel bronze finish, for example, is a warmed-up version of the very popular oil-rubbed bronze

seen in hardware and decorative plumbing fixtures and hardware. Reflecting the use of more brass and gold tones in decor, Los Angeles-based Atlas Homeware's new champagne finish coordinates well with recent trends in decorative plumbing fixtures. The soft gold color adds warmth and elegance to any space. The company also offers more streamlined designs for those who prefer modern styles.

Inspired by textiles, the elegant Annadale collection by Bossier City, La.-based Hardware Resources emulates a downy, pillow-like style. The tufted look provides a graceful, formal accent to cabinetry.

Glass is another trend that is offering clear advantages in hardware design. This durable and easy-to-maintain surface offers a luminosity and softness as contrast to tougher-looking materials used in kitchen and baths design, such as stone and stainless steel. Clear, opaque and transparent options add a touch of dimension and beauty without adding a heavy look.

Amerock's Abernathy collection uses cut glass for an elegant, Gatsby-like design influence, while Atlas Homeware's art glass knobs come in statement-making colors, such as emerald, the Pantone color of the year.

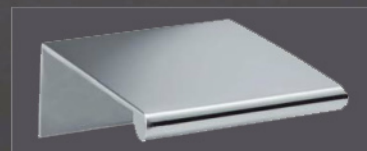
Detailed designs and bolder shapes are providing designers another opportunity to add personalization. Taking inspiration from art and nature, Keeler's Amaranta collection makes an

artistic statement using flowing, organic silhouettes, and the company's Riverside collection uses leaves as inspiration for Prairie-style hardware.

"Fashion color has always been a strong influence in home design, but now we're beginning to note that textures and pattern also play a role," said David Tyler, VP marketing for Hardware Resources. "Masculine looks balance a kitchen environment and blend well with classic chef-styled appliances and fixtures."

This more masculine look is seen through bold geometry. R. Christensen introduced the Art Tech Series' Aero two-piece collection; the angular pulls can be installed at different positions for a custom look. Aberdeen by Hardware Resources also uses bold geometry for a masculine aesthetic, reminiscent of cuff links.

CONTINUED



Tanja Kern is a freelance writer and blogger based in San Diego.

OPENING SPREAD

1. Hardware Resources

Part of the company's new Jeffery Alexander collection, the Marvella is substantial enough to stand out with classic details and contemporary lines that integrate well with today's transitional kitchen designs. hardwareresources.com

2. Atlas Homewares

For buyers who want a streamlined look in the kitchen or bath, the Tab Pull Collection is an alternative to pricier hardware of the same design. The products project about 1.75 ins. and vary in length from 1.5 ins. to 15.4 ins. Five finishes are available. atlashomewares.com



THIS PAGE

3. Amerock

With an air of elegance, Abernathy hardware adds dimension with jewel-like knobs in three distinct finishes. Made from glass, the pulls measure 1.2 ins. long and 1.1 ins. wide. amerock.com



4. Reveal Designs

Designed by Cutler Anderson Architects in Seattle, the Anderson Pull can be installed either vertically or horizontally. Handmade in the United States, the product comes in 3- and 5 1/2-in. lengths and in stainless steel and oil-rubbed bronze finishes. reveal-designs.com



5. Top Knobs

Emulating its namesake geometric pattern, the Emerald collection offers a sophisticated take on a classic cut. Featuring an interesting blend of styles and shapes, these knobs and pulls from the Chateau collection add function and beauty to any decor. topknobs.com

6. Keeler

Taking inspiration from art and nature, the Amaranta collection makes an artistic statement for more daring designs. The product is made from solid brass or bronze and comes in such finishes as natural white bronze and authentic brass. keelerhardware.com

