

RESIDENTIAL design+build

inspiring architects and custom builders

SEPTEMBER 2011

Perfect the art of best practices

Making a statement
by meeting the
highest of standards

ALSO INSIDE

Rebuilding after
a disaster

How I survived the
housing slowdown

+ Designer/Builder

Josh Wynne Construction
Sarasota, Fla.
joshwynneconstruction.com

+ Project name: Power Haus

Location: Sarasota, Fla.
Size: 3,089 sq. ft.

+ Exterior

Roofing: Metal Sales
Doors: Jeld-Wen Windows and Doors
Insulation: BioBased Insulation
HVAC: Carrier Corp.

+ Interior

Locksets/hardware: Rocky Mountain Hardware
Tile: Heath Ceramics
Lighting: LiteTouch Inc.

+ Kitchen

Faucets: Kohler Co.
Range: Blue Star
Exhaust: Best
Appliance drawers: Sharp Electronics
Refrigerator/freezer: Sub-Zero Inc.
Wine storage: Perlick Corp.
Dishwashers: Miele Inc.

+ Bath

Tubs: Victoria & Albert
Showers: Kohler Co.
Toilets: Kohler Co.
Faucets: Kohler Co.
Washer/dryer: Whirlpool Corp.

+ Technology

Home control system: Elan Home Systems
Lighting control: LiteTouch Inc.
Structured wiring: Elan Home Systems
Security system: DSC
Theater projector/TV: Samsung
Theater speakers: Bay Audio
Sound containment: Middle Atlantic Products
Touchpanels: Elan Home Systems
Subwoofer: Velodyne Acoustics

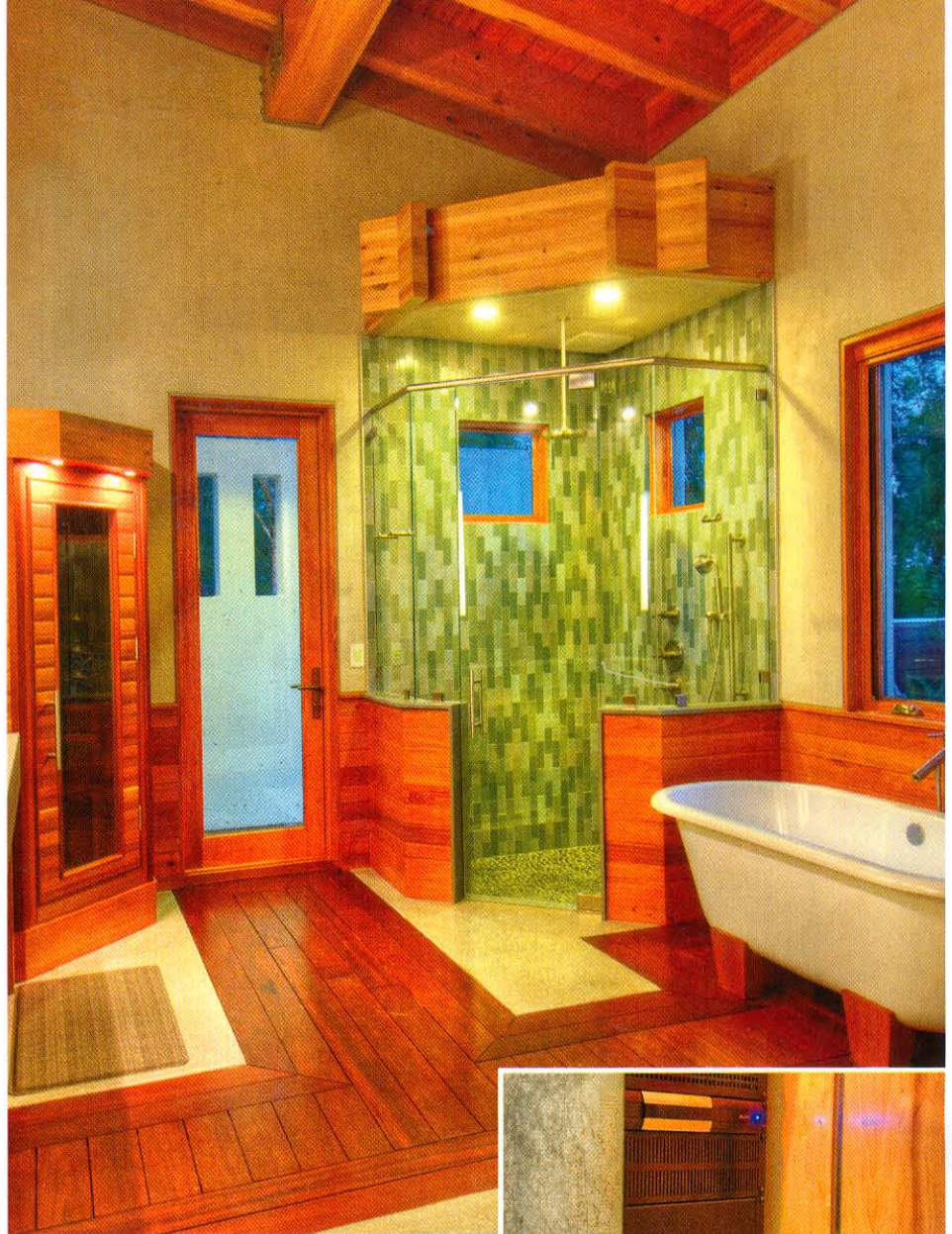
+ Outdoor living

Lighting: Barn Light Electric
Grill: Big Green Egg
Outdoor speakers: Niles Audio

“In the winter, we wanted to take advantage of the deciduous trees. As the sun drops, it filters into the area,” Wynne says. “Although on paper, the large exposure on the western side is not green, in practice it worked in our favor.”

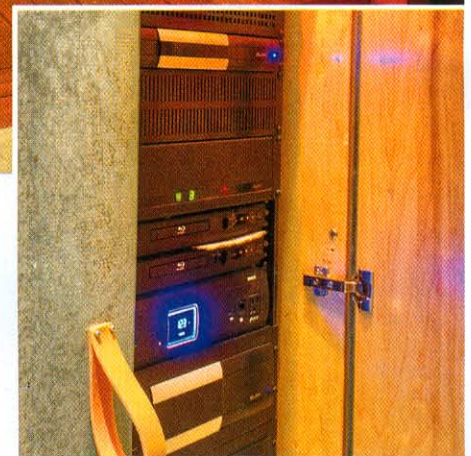
WIRED FOR SUCCESS

Home technology was another homeowner request. Using Elan’s G system, almost everything in the house is automated. “The Elan system is the brains behind the operation which includes two 7-in. touch screens and four 3-in. touch screens,” Wynne adds.



↑ Passion from every person involved in the project was the key to the success of this LEED Platinum home.

The home’s technology includes a lighting control system, integration with HVAC, security, appliances that are IP-addressable and connected to the system for monitoring, entertainment, audio and solar panels. “The homeowners can manipulate their home from anywhere,” Wynne says. “My client emailed me the other day concerned about the solar performance being too low for the month, so we troubleshooted the system. You can see in real time and over a lifetime how much power the solar system is producing and how much power is being used — even by each component.” Three years ago, Wynne Construction won Custom Electronics Association’s award and he hopes to win this award again.



↑ The home’s technology allows the homeowners to control and view the home’s system features remotely.

Wynne and his team are very proud of this project and its many industry awards. The key to its success is the teamwork behind it. “You can’t do great things all by yourself,” he says. “A well-built house has a soul and intangible quality coming from a lot of people’s passion. We had the right team together and we all cared enough to make it a success.” ■