

Love your kitchen BEST NEW  
APPLIANCES, SURFACES, FIXTURES, AND MORE

# TRADITIONAL HOME<sup>®</sup>

RANCH  
REVIVAL  
TOUR OUR  
PALM SPRINGS  
SHOWHOUSE

March / April  
2018

## Before & After

REINVENT  
YOUR  
ROOMS

Signs of  
Spring!  
FRESH COLORS,  
LIGHT LUNCHES  
& A CHARMING  
BEE COTTAGE

\$4.95 U.S. Display until April 10



0 14005 14401 0







WRITTEN BY SALLY FINDER WEEPIE  
PHOTOGRAPHY BY WERNER STRAUBE  
FIELD EDITOR ELAINE MARKOUTSAS  
STYLED BY HILARY ROSE

# PRAIRIE NOUVEAU

A SUBURBAN CHICAGO COUPLE RESCUE—AND  
REIMAGINE—A RARE MASTERPIECE OF MIDWEST DESIGN





"I want to pay homage to history but at the same time make the rooms current," Mondì says. "I see this as a home where traditional meets modern—a fusion of classical elements and unexpected, edgy moments. The modern things had to blend seamlessly, though. It's not easy to pick out what's old and what's new."

Wallpaper in the dining room, for example, looks traditional from a distance. Up close, you see that the pattern is actually animal skulls. Its pale teal blue background speaks to another of Mondì's twists on history, this time with color.

The blue in original art glass provided a starting point for Mondì's palette. "I tweaked that Victorian blue and went with teals on the main level and gray-blues in the bedroom," she says. "Using earth tones seemed very natural—I added in grays and gold tones that speak to the home yet are very current. I wanted that tension between gray and gold—and between a mix of metals: warm and cool, gold and silver."

Hits of energy come from rich Bordeaux hues on upholstery and from contemporary art, including a fish painting in the living room chosen by Rob and Amanda's teenage son. "They love boating and living an adventurous life, so this art spoke to them," Mondì says. "Plus, it's such a surprise in the room—and I like surprises."

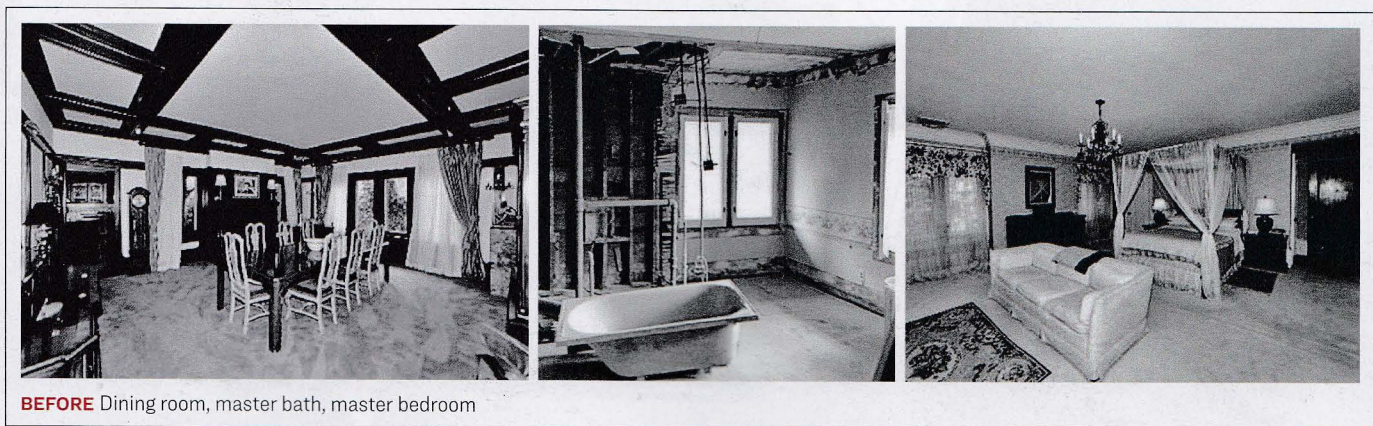
Turns out, so do the Millers' neighbors—not to mention their friends, family, and even random strangers driving down the street, who put on the brakes to take a look at this architectural icon that sidestepped the bulldozer.

"It was complex, expensive, one of those projects that not everyone would be willing to tackle," Rob says of the two-year renovation. "But every day I pull into my driveway I think, *What a cool house*. Sharing it with people and passing on an appreciation of history is so amazing to me. We're stewards of this house, preserving it for the next generation—there could be no bigger reward." ■

Architect: John Eifler Interior designer: Donna Mondì

For more information, see sources on page 125

**Master bedroom fireplace nook** A band of copper metallic tile adds a touch of shimmer to the fireplace surround. Hits of cozy blue mesh with walls coated in an easy-to-live-with gray, Benjamin Moore's "Half Moon Crest." The shapely chairs and side table are from Julian Chichester. **Master bedroom** A soaring groin-style vault plus a wall of windows makes the bedroom airy, bright, and beautiful. Mondì had the sleek low-slung bed custom-made to snuggle comfortably under a row of Prairie-style windows. **Chaise nook** A luxe seat from Hickory Chair invites late-night lounging. **Master bath** A modern take on the claw-foot tub from Victoria + Albert nods to the era of the home in an updated way. The faucet is by Samuel Heath. Radiant heat warms the floor, clad in tile from Materials Marketing.



**BEFORE** Dining room, master bath, master bedroom