

the hottest APPLIANCES \* CABINETS \* TILE \* SINKS \* TUBS \* LIGHTING \* MORE

Woman's Day® Specials

# KITCHENS & BATHS™

ENTER FOR A CHANCE TO  
**win**  
**\$10,000**  
TOWARD A NEW  
IKEA KITCHEN  
SEE P. 91

designs  
for every  
budget

**273**

**IDEAS + SOURCES  
FROM THE PROS**

**SMALL PROJECTS,  
BIG IMPACT**

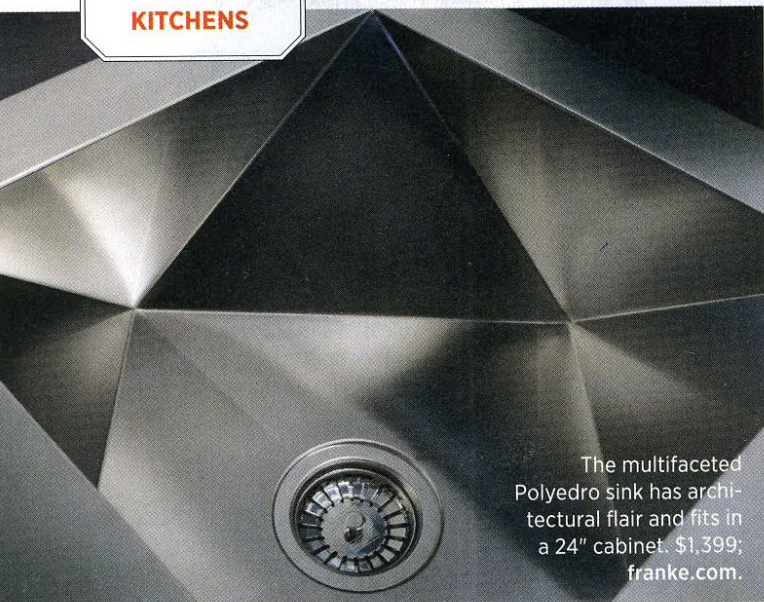
Volume XXII, Number 1  
U.S. \$5.99  
Display until May 29, 2012  
womansday.com/specials





**what's  
hot**

**KITCHENS**



The multifaceted Polyedro sink has architectural flair and fits in a 24" cabinet. \$1,399; [franke.com](http://franke.com).

**SPLURGE**



◀ The Vertigo Double range hood has a powerful recirculating blower, heat sensor and more. \$2,399; [bestsorpresa.com](http://bestsorpresa.com).

Avenue cabinets set off mod appliances in style. Priced by wood species and finish; [merillat.com](http://merillat.com).



◀ Tap into Blue Pure: chilled water, still or sparkling. From \$995; [groheamerica.com](http://groheamerica.com).



Engineered Zinfandel Tigerwood hardwood planks have a rustic, natural look. From \$5/sq. ft.; [br111.com](http://br111.com).



# what's hot BATHS

MAKE A SPLASH WITH THESE NEW PRODUCTS.

BY GINA PROVENZANO



## super soaker

Go from white to wow with the customizable Tekura freestanding tub. Stainless steel magnetic panels, shown, attach easily; other options are offered. From \$6,695; [bainultra.com](http://bainultra.com).



# what's your style?

BATHS

## updated traditional

Designer Tracey Butler of New Jersey's b.home interior design weaves a timeless tale in a spacious South Jersey bathroom.

### details, details

When accessorized with vintage-style ring pulls and cross-handle faucets, the modern vanity takes on an eclectic personality.

### research the stone

The right marble can tell a room's story: The gray and gold veins of Calcutta Gold, seen on the walls, floor, counters and tub surround, infuse a traditional stone with contemporary appeal.

### opposites attract

The dark tones of the vanity and mirror frames supply a sharp contrast to a largely white color scheme, warming the space with a nod to the contemporary.

### redefine the layout

Butler removed a toilet closet and makeup table to open up the 300-square-foot room. Centering the air-jet soaking tub beneath the window combines a beautiful view with a pampering experience.

—S.G.







## STYLE ESSENTIALS



Perrin & Rowe Edwardian 3-Hole Low Level Spout Widespread Lavatory Faucet with Cross Handles, \$1,026; [rohhome.com](http://rohhome.com).



Bryant Sconce, \$189; [circaighting.com](http://circaighting.com).



Pro-Meridian 60 Tub, from \$1,705; [bainultra.com](http://bainultra.com).



QCL Ring Pull in Old Nickel, Upper Canada Specialty Hardware (#1036A24), \$7.70; [ucsh.com](http://ucsh.com).



## kitchens

ALL ABOUT THE HOUSE

*location*

ORINDA, CA

*built*

1978

*house style*

TWO-LEVEL RANCH

3,400 SQ. FT.

5 BEDROOMS

3 BATHS

# heart of the home

This remodeled California kitchen is now the center of attention.

WRITTEN BY NANCY A. RUHLING PHOTOGRAPHS BY JAMES CARRIERE

**D**rab cabinets and an awkward layout once defined the 418-square-foot kitchen where physicians Karen Carothers and Robert Epley prepared meals for their kids, Sarah, 20, Emma, 16, and Robert, 14. Tired of the space, the couple called on designer Julie Williams, CKD, CBD, of Novato, CA, who created a better layout, which would take advantage of the views of the lush backyard. The plan called for separate areas, each with its own purpose: a food-prep station, a desk, a breakfast nook, and a beverage bar surrounding a center island that acts as command central. Once completed, the new kitchen usurped the family room as the main gathering spot of the house. Homework spread out on the island is the typical backdrop to the flow of family conversation. It's just what these doctors ordered.



**SHED SOME LIGHT** Dark and outdated, the former kitchen felt closed in.



**LET IT FLOW**

For continuity, the dark stain on the polished wood floor echoes the finish on the island.

**WHITE AND LIGHT**

Natural Calacatta Oro honed marble from IRG ([marblecompany.com](http://marblecompany.com)) tops the center island.

STYLED BY SARAH ALBA





#### HOT ZONE

A six-burner Dacor gas cooktop ([dacor.com](http://dacor.com)) is large enough to make big family meals.

#### SINK WITH A VIEW

The undermount Oliveri sink ([oliverisinks.com](http://oliverisinks.com)) and KWC faucet ([kwc-america.com](http://kwc-america.com)) shine.

#### MIX IT UP

The island's wenge-veneered base sets off custom white-painted maple cabinets.

#### BE SEATED

Sleek LEM piston stools from Design Within Reach ([dwr.com](http://dwr.com)) let the family take in the view.



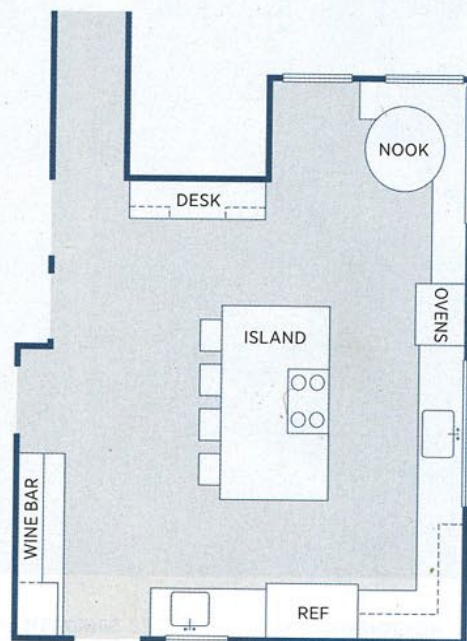
A darker paint color is the perfect choice for this space, as the large expanse of windows lets in abundant sunlight, brightening up the room.



**LIGHT MEALS SERVED**  
The cozy breakfast nook is bordered by walls of glass that flood the space with natural light. The gray paint color, Gray Shower (benjaminmoore.com), grounds the room.



**DON'T MESS WITH SUCCESS**  
The designer liked the placement of the sink and the fridge, above, so new models were simply swapped in.



**FLOOR PLAN** The room flows around the center island, allowing the couple to cook and entertain at the same time.

FLOOR PLAN: STEVE STANKIEWICZ





**MAIN ATTRACTION**

Perimeter cabinets were painted in a matte white finish, helping the dark wood island stand out as a focal point. The Liebherr fridge ([liebherr.us](http://liebherr.us)) has panels in the same white.





#### WORKING TOGETHER

The clean lines of the Shaker-style cabinets are a fine backdrop for the textured cast-bronze knobs and pulls from Du Verre ([duverre.com](http://duverre.com)).

#### RETAIN DETAILS

The pass-through to the dining room is original to the house and allows light and conversation to flow from room to room.

#### WET ZONE

Mocha-colored Caesar-Stone countertops ([caesarstoneus.com](http://caesarstoneus.com)) grace the perimeter cabinets, including the surround for the Oliveri prep sink.

#### COMBINE COLORS

The backsplash: Gigi's Groovy Stiix glass mosaic in Peace Man Peace from Alys Edwards Tile & Stone (714-917-6720), a chocolate liner by ANN SACKS ([annsacks.com](http://annsacks.com)) and a Lavagna matte tile by LEA Mood ([ceramictiledesign.net](http://ceramictiledesign.net)).

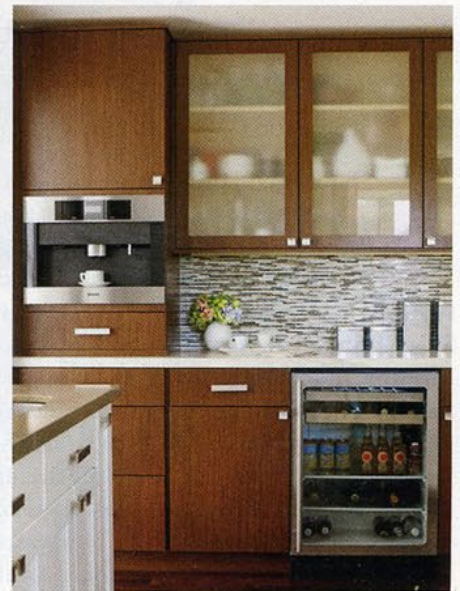


"The new kitchen has brought our family closer together. Nobody goes to the family room anymore, which is nice because we talk to each other more," says Karen Carothers.



#### DESK SET

The built-in kitchen desk by Columbia Cabinets ([columbiacabinets.com](http://columbiacabinets.com)) has pocket doors that close over the shelves to conceal clutter. The desktop is Corian in Sonora ([2.dupont.com](http://2.dupont.com)).



#### OFFER SELF-SERVICE

A beverage center complete with built-in Miele coffeemaker ([mieleusa.com](http://mieleusa.com)) and U-Line wine fridge ([u-line.com](http://u-line.com)), puts refreshments within reach of guests.



## baths

ALL ABOUT THE HOUSE

**location**

SAN FRANCISCO, CA

**built**

1900

**house style**

VICTORIAN

3,200 SQ. FT.

4 BEDROOMS

3.5 BATHS



### WASH AND GO

Open at both ends, the shower is easily accessible from the main bath area. Because proper ventilation is important in a steamy bathroom, the awning window is operable.



### A SUBLIME SOAK

Placing the Vola tub filler (about \$760; [vola.com](http://vola.com)) on a wall above the Origami tub (from \$2,600; [bainultra.com](http://bainultra.com)) visually balances the installation.

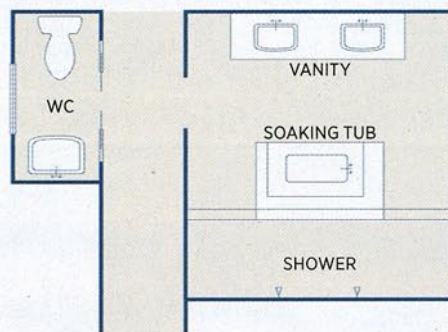
# lighten up

A gut renovation yields an airy, free-flowing master bath that's a real showstopper.

WRITTEN BY LESLIE CLAGETT PHOTOGRAPHS BY PAUL DYER

Looking at this stylish, sparkling master bath, it's hard to reconcile architect Andy Rodgers's succinct description of the space before the remodeling: "It was basically a wreck." As part of a whole-house makeover, the spacious new bath is designed to serve two people with efficiency and comfort.

The bathroom is divided into distinct zones, in a floor plan that effectively prevents bottlenecks by users during busy mornings. The central and largest area is home to the tub and a built-in double vanity. It's brightened by a band of windows installed at a privacy-preserving shoulder height, as well as by a large skylight. A tiled wall that rises up from behind the tub shields the walk-through shower. On the opposite side of the central space, the toilet is situated in its own enclosure.



**FLOOR PLAN** The designer created zones in this master bath for the vanity and tub area, shower, and a separate powder room.



**COOL AND CALM**

Pale paint (Sandalwood Tan and Apple White; [kellymoore.com](http://kellymoore.com)) adds airiness, as does the mirror.

**KEEP IT CLEAN**

Wall-mount Uno faucets by Axor ([hansgrohe.com](http://hansgrohe.com)) free up counter space.

**BASIN BASICS**

The drop-in sinks (about \$300; [dura vit.us](http://dura vit.us)) have a modified vessel design.

**SURFACE SAVER**

The quartz-based countertop (about \$45/sq. ft.; [caesar stoneus.com](http://caesar stoneus.com)) is stain resistant.

**FLOATING FORM**

The cantilevered custom vanity visually reduces the mass of the cabinet.

**FULLY COVERED**

The ample floor space is clad in Fabrique Crème Linen 12" x 24" tiles ([daltile.com](http://daltile.com)).

