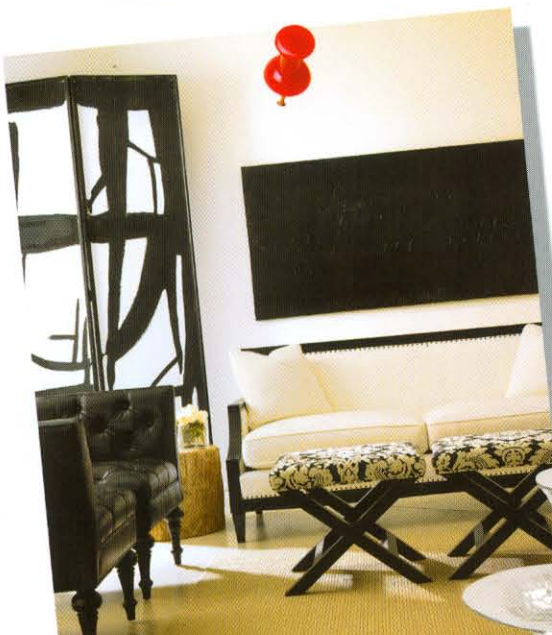


WHIRL

@HOME

VOLUME 2



Your Local
GUIDE for
CREATIVE INSTALLATIONS
AND HOME SOLUTIONS



WWW.WHIRLMAGAZINE.COM
0 3 >
0 74470 22518 8
VOLUME 2 2010 \$4.95
DISPLAY UNTIL OCTOBER 30, 2010

SERENITY, NOW

BY JESSIE CADLE | PHOTO COURTESY JENNINGS & COMPANY

As the water fills the tub, we lean our heads back, breathe a sigh of contentment, and as our feet dangle delicately over the tub's edge, we indulge in the comfort that only comes with a bath. The bathtub is no longer simply a pseudo-swimming pool in which kids can splash uproariously, sloshing water on the tiled floor. It's a chic bathroom accent, complementing faucets and mirrors, and a gorgeous piece that conjures images of serenity at the end of a long, autumn day. This classic Cheshire tub is deep enough to lounge comfortably with a book — we recommend starting with *Alice In Wonderland* to go with the tub's Cheshire theme — and is strikingly footed, giving a sophisticated tone to the smallest of rooms. To top it off, the tub is made from finely ground volcanic limestone (porcelain is a thing of the past). So curl up, chill out — or rather, warm up — and take a bath. @



Victoria & Albert
Cheshire Collection
soaking tub, \$2,200.
Splash.