



Find us on Facebook & Twitter
twitter.com/wholesalermag
facebook.com/WholesalerMag

THE A TMB Publication

APRIL 2013
VOL 68, NO. 4

WHOLESALER

News of Plumbing • Heating • Cooling • Industrial Piping Distribution



Jennifer Griffith photo

The modern fixtures display at Wilkinson Supply's Raleigh, N.C., showroom is a real eye-catcher. Founded as a traditional plumbing wholesaler, Wilkinson began developing a strong showroom business nearly 20 years ago, which now accounts for more than 30% of the company's total sales volume. See the feature on page 40.

KBIS 2013

NKBA president gives advance look at upcoming KBIS

BY MARY JO MARTIN
Editorial director

With the Kitchen & Bath Industry Show just a few weeks away, I was

Exclusive interview

excited to sit down with John Morgan, president of the National Kitchen & Bath Association, to get a sneak peak at what to expect at this year's event.

KBIS will be held April 19-21 at the Ernest N. Mo-

rial Convention Center in New Orleans. Show hours are 10 a.m. – 5 p.m. on Friday and Saturday, and from 10 a.m. until 3 p.m. on Sunday. Educational sessions will kick off on Thursday, April 18, following by several special events that evening, so Morgan encourages attendees to arrive early.

More than 20,000 are expected to attend this year's show, which will feature 700 exhibitors. In fact, Morgan noted that since the announcement a few weeks ago about next year's co-located event with the International Builders' Show, an additional 50

(Turn to What's on tap... page 88.)



Scan with your smart phone or visit online at qr.qg.com/9W7iRR to renew your subscription to *The Wholesaler!*

#BXRPTB *****AUTO**S-DIGIT 34234
#MRCOISD1S 1#
LINDA JENNINGS
PRESIDENT
JENNINGS AND COMPANY
438 WOODLAND DRIVE
SARASOTA FL 34234-3772
25105
2057
P019

Toilet flush system

New streamlined Adjustable Flush System features design with fewer parts and a price nearly half the price of original. Unique leak-prevention feature gives user full control of the water entering the tank. Chlorine-resistant flat flapper is adjustable to set the optimum flush volume for each individual toilet. Flat-bottomed flapper included to improve flush velocity. Removable sediment filter prevents damaging particles from entering the fill valve. **Aqua Mizer.**
www.AquaMizerInc.com



Bathtub installation

The Theatre Stage™ is designed with bath partially sunk into stage to give the illusion of being molded into its



surroundings. Makes tub appear smaller. Stage makes tub safer and easier to get in and out of, with lower sides to step over. Stage accommodates full range of therapeutic options. **Bain Ultra.**

www.bainultra.com



Victorian-style faucets

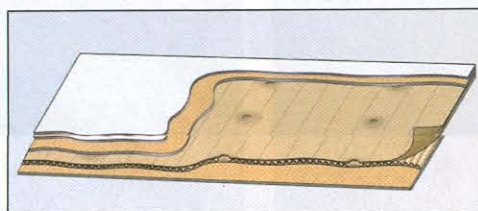
Quentin collection of antique style faucets for the bathroom offer detailed craftsmanship and modern water savings and technological advances. Includes full line of coordinated and formed lavatory faucets, bath/shower fixtures and complete shower systems, including two decorative lavatory faucet spout options. Available finishes include polished chrome, satin nickel and oil-rubbed bronze. Faucet spouts and bodies made of high-quality cast brass with washerless ceramic disc valves. **American Standard.**

www.americanstandard.com

FRP showers

DuraCore™ fiberglass-reinforced polymer (FRP) showers and tub-showers is strong, glossy and bright white. Surface layer is premium-grade gelcoat. Second layer has resin bonds with thousands of small strands of fiberglass woven together for structure and rigidity. Third layer has corrugated reinforcement wrapped around all shower walls. Final layer has second coat of the fiberglass/resin mixture on top of corrugated reinforcement. **Aquatic Bath.**

www.aquaticbath.com



Shower solutions

The Raindance Select® Showerpipe has integrated exposed thermostat. Includes Raindance Select 150 handshower with spray face. Available sprays include: soft Rain AIR, Cresse AIR, and MIX. Comes in chrome or chrome/white dual finish. Raindance 180 Showerpipe features Raindance S 180 AIR 1-jet showerhead and Raindance S 100 AIR 3-jet handshower with Rain AIR, Balance AIR and Whirl AIR spray modes. Tub/shower model also available. Offered in chrome or brushed nickel. Croma Green Showerpipe offers anti-scald protection and includes Raindance S 150 AIR Green 1-jet showerhead and Croma E 100 Green 3-jet handshower with Full, Pulsating Massage and Intense Turbo spray modes. Tub/shower model also available. Models offered in chrome or brushed nickel. Raindance Rainfall AIR 180 is available in chrome or white/chrome dual finish. Showerhead has two spray modes, body encompassing Rain AIR and Rainflow Waterfall. **Hansgrohe.**

www.hansgrohe.com



Shower drain

StyleDrain Tile™ decorative shower drain allows for inlay of any tile or stone to match surrounding flooring. All-brass tile frame available in multiple decorative finishes. Artisan tile frame finishes include Polished Chrome, Polished Brass (PVD), Polished Nickel (PVD), Stainless Satin Nickel (PVD), and Blackened (PVD). Adaptable to most mainstream drain bodies. Installation is compatible with all waterproofing methods. Drains up to 10 gallons of water per minute. Inner frame of drain is 5⁵/₃₂ sq. in. and outer frame is 5¹⁵/₁₆ sq. in. **California Faucets.**

www.californiafaucets.com



Freestanding copper bathtub

Ellipse copper soaking bath has elliptical shape and is available in a variety of sizes with custom crafting. Measures 42"×72"×24" and can be fabricated with flat or bowed top ledge. Ends of tub recline slightly, descending into a flat bottom. Copper is highly corrosive resistant. Also available in stainless steel. **Diamond Spas.**

www.diamondspas.com

Shower toilet

SensoWash® C shower toilet includes shower toilet seat with concealed water and electric connections. Technical components are miniaturized so

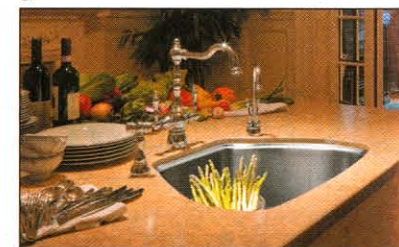


all technology fits between ceramic body and seat. Mixes a toilet and a bidet. Features individual temperature control of water, air, and toilet seat, intuitive wireless remote control, child safety function, three differentiated wash options for men and women, power-saving mode, and an LED night light. **Duravit.**

www.duravit.us

Sink series

Centennial sink series is crafted of 18 ga. stainless steel with soft, smooth



edges and elegant side curves. Traditional D-bowl shape tapers to allow widest part bowl to face the user. Available in three sizes. Offers optional custom-fitted accessories. Sink supports bottom grid for draining, top grid to raise work surface, and cutting board made of reloadable Iroko wood. **Franke Luxury Products Group.**

www.frankeksd.com

Kitchen offerings

New faucets and pot fillers enhance design of kitchen.

Starck Kitchen Collection comes in HighArc, Prep and Bar iterations. Its faucets feature ceramic cartridges and swivel spouts with pot fillers.

Citterio Kitchen collection features M 2-Hole Kitchen Faucet with M2 ceramic cartridge and pull-down handle.

Swivel spout gives option to freely position handle and spout with available extension set.

Both collections' pot fillers are available in wall-mounted or deck-mounted versions and come in chrome or steel optik finishes.

Axor Hansgrohe.

www.hansgrohe-usa.com

Round showerhead

New round showerhead design plays with existing lines to produce fresh and aesthetically-pleasing geometrical form. Suited for luxury bathrooms. Keeps technical parts hidden from view.

Hastings Tile & Bath.

www.hastingstilebath.com



Single-lever kitchen faucets

SAROS range of single-lever kitchen faucets delivers functionality for busy, modern kitchen, and contemporary and traditional spaces. Clean lines, well-proportioned cylindrical body and ergonomically designed pull-out incorporate spout-free, self-cleaning technology. Series consists of three faucets, all with water-saving flow rates of 1.8 gpm at 60 psi. Smallest unit is bar faucet with reach of 6 1/2", and gooseneck, swivel-spout design that rotates 160°. Two larger models include full-sized kitchen faucet



with reach 8 7/8" and a prep faucet with reach 7 3/16". Both come with curved, pull-out spray. Two spray settings are offered: aerated Neoperl® Cascade® and needle spray. All three spouts available in chrome and splendure™ stainless steel finishes.

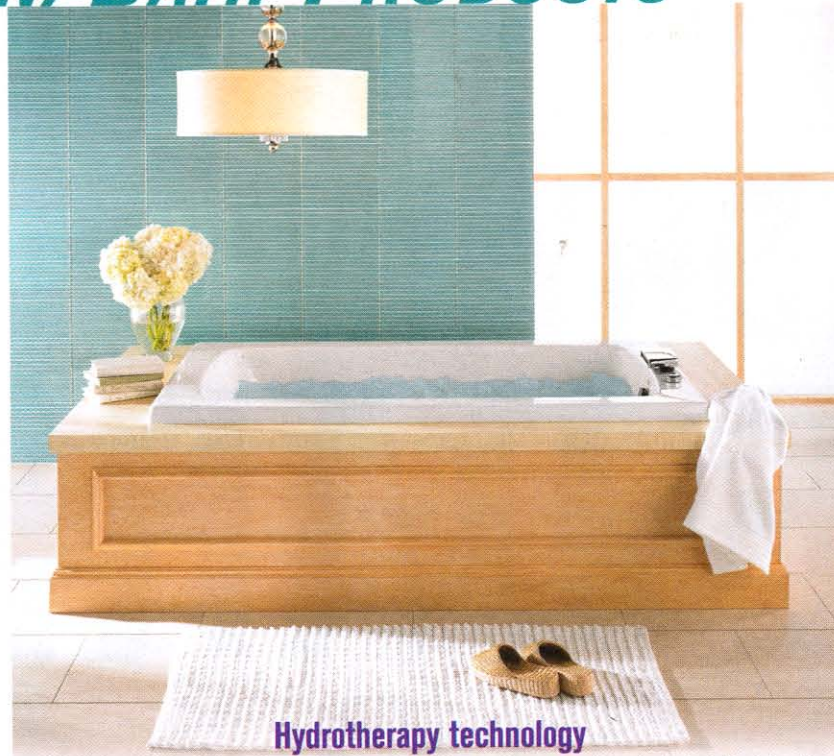
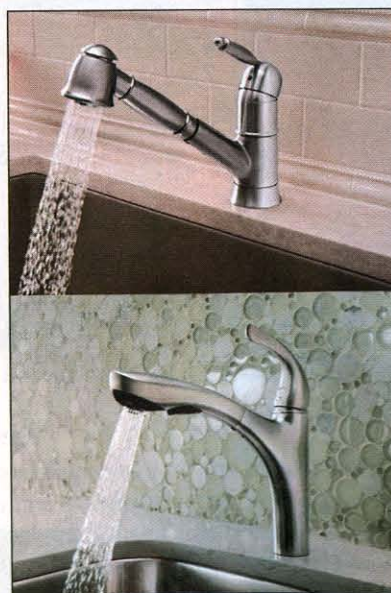
KWC Faucets.

www.kwcamerica.com

GRACE™ II, ALTA™ Compact, HILAND™ and NAPA™ are complete with beautiful finishes and water saving options to deliver powerful performance. GRACE II and NAPA include pull-out and pull-down designs. ALTA Compact includes extendable pull-out design and classic contemporary style. HILAND includes durable pull-out design. All feature dual spray, solid brass body, ceramic disc cartridge, and 2.2 Gallons Per Minute (GPM) flow rate.

BLANCO.

www.blancoamerica.com

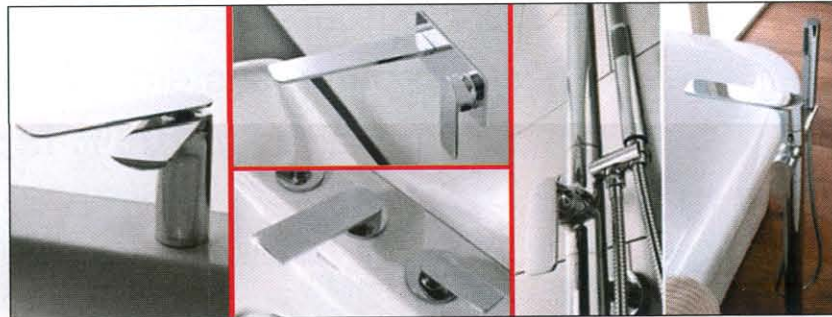


Hydrotherapy technology

New MicroSilk® Generation II technology presents more minimalist design with fewer ports, less maintenance, elimination of the bath water filters, and quiet system. Oxygen-rich microbubbles provide gentle, deep cleansing of the pores, moisturize, smooth and plump the skin. Add a MicroSilk® Shower Wand to the delivery port in sidewall of bath and direct streams to face and upper body.

Jason International.

www.jasoninternational.com



Bath collection

SENTO faucet collection has contemporary aesthetic with pure and harmonious shapes. Collection includes widespread, single-hole wall-mount, thermostatic shower, floor-mounted vessel and tub filler. Available in polished chrome or satin nickel.

GRAFF.

www.graff-faucets.com

Faucet collection

GRACE™ II, ALTA™ Compact, HILAND™ and NAPA™ are complete with beautiful finishes and water saving options to deliver powerful performance. GRACE II and NAPA include pull-out and pull-down designs. ALTA Compact includes extendable pull-out design and classic contemporary style. HILAND includes durable pull-out design. All feature dual spray, solid brass body, ceramic disc cartridge, and 2.2 Gallons Per Minute (GPM) flow rate.

BLANCO.

www.blancoamerica.com



Wall-outlet toilet

Two-piece Riase wall-outlet toilet can be used where bottom outlet is not readily available. Includes efficient floor mounted wall-outlet installation. Gravity-only Hyperion™ Flushing System makes it EPA WaterSense compliant. Uses 1.28 gallons (4.8 liters) to complete each powerful, quiet flush. Oversized 3.15" (80 mm) trap way and 3" (76 mm) flush valve eliminate clogging. ADA-compliant, elongated bowls offer comfort and accessibility. Large water spot and MicroGlaze™ anti-microbial surface deliver clean bowl.

ICERA.

www.icerausa.com

Instant hot water dispensers

The Invite Series instant hot water dispensers line is available in two models: Contour and Classic. Helps



streamline cooking and ease food prep and clean-up by instantly delivering 200°F water. Features automatic shut-off, hot water tank upgrade, and robust optional filtration system.

InSinkErator.

www.InSinkErator.com

Shower mobile control

Solitude mobile control application for steam showers is compatible with the iPad, iPhone, Android and other smart



mobile devices. Users can control steam flow, temperature, duration and Bluetooth®-enabled Serenity Light & Music System. Allows access to email, personal playlists, video, TV and music streaming.

ThermaSol.

www.thermasol.com