

WHOLESALE^{the}ALER

News of Plumbing, Heating, Cooling and Industrial PVF

MARCH
2015

VOL 70,
NO. 3



The Mississippi Gulf Coast tourism bureau encourages people to 'Stay a while. You'll get it.' Having celebrated their 90th anniversary in 2014, the team at Mississippi Coast Supply personifies that. Fathers and sons Freddy Schwan, Fred Schwan, Lanny Roch Sr. and Lanny Roch Jr. proudly lead this Biloxi-based wholesaler. Together, they have dedicated a combined 100+ years of service to their customers. See our coverage beginning on page 164.

VP Supply expands with Central NY acquisitions

ROCHESTER, N.Y. — VP Supply continues to add to its size, reach and renowned expertise through recent acquisitions of two Central New York companies. Greater Binghamton's Tri-Bro Kitchen & Bath Supply and Auburn's United Fasteners have become local branches of VP Supply, serving both contractor and retail customers in their respective areas.

Tri-Bro Kitchen & Bath Supply, with locations in Vestal and Norwich, was acquired in December 2014 and is now known as Tri-Bro Supply, a Division of VP Supply Corp.

The Vestal location offers products and services for plumbing, HVAC, kitchen and bath projects. Similar to VP Supply's Innovations showrooms, the Vestal location also features a retail showroom with full project design services. The Norwich location offers products for plumbing and heating needs.

The United Fasteners acquisition was completed in October 2014.

(Turn to VP Supply ... page 163)



FIND US
twitter.com/wholesalermag
facebook.com/wholesalermag

PRODUCT NEWS

Undercounter lavatories add touch of design

Atherton vitreous china under-counter lavatories provide an appealing, versatile design option ideal for both remodeling and new construction. With their clean lines, simple geometric shapes,



and precise symmetry, these new undermount lavatories offer homeowners the sleek look of a seamless transition from basin to countertop. Designs include: two oval models that measure 17"x14" and 19"x15" and a rectangular model that measures 17"x13". Easy-to-clean basins have vertical sides and flat bottom. **TOTO.**
www.totousa.com



Eco-friendly, compact bathtub

The Halo bathtub sports a compact design, therapy options and a deep bathing well for full-body immersion. And it's eco-friendly, with a resin that's formulated with a renewable bio-derived and/or recycled content. Measuring 52" x 52" x 26", its relatively small footprint consumes little floor space, making this freestanding tub an ideal choice for rooms where space is at a premium. White or biscuit with an optional gloss finish. **MTI BATHS.**

www.mtibaths.com

Contemporary collection

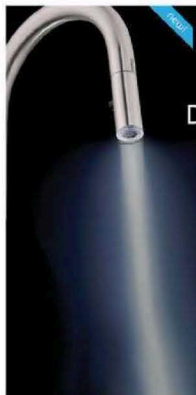
The new Loft collection of bath fixtures is designed to suit today's contemporary-styled baths. This new suite, characterized by



appealing, leading-edge styling, consists of two rectangular above-counter lavatories and a one-piece toilet. Two design-coordinated rectangular lavatory sinks are crafted from fine fire clay and are ADA-compliant. The Loft one-piece high efficiency toilet features a space-conserving compact design with an elongated bowl that fits into the area of a round front toilet. Beneath its clean good looks, the new toilet delivers a high-performance flush with a 3" flush valve and 2 1/8" trapway. **AMERICAN STANDARD.**



www.americanstandard-us.com



Digital kitchen faucet

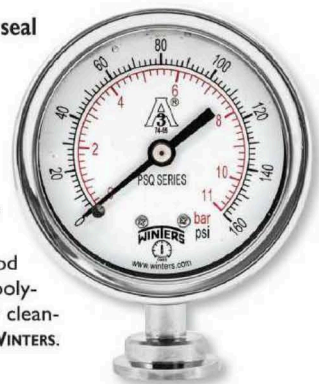
Introducing two new kitchen faucets as part of the Did-U-Wave digital family. Features include a motion sensor; LED task lighting; and SnapBack technology, the Snap-N-Lock weight system that offers easier, flexible installation and is coupled with docking that ensures the head will comfortably snap into place after every use. Faucets offered as an AC and DC option. Note: only AC version offers task lighting. Both operate at a conservative 2.2 gpm. Available in chrome and stainless steel finishes. **DANZE.**

www.danze.com

Sanitary pressure gauge with fractional seal

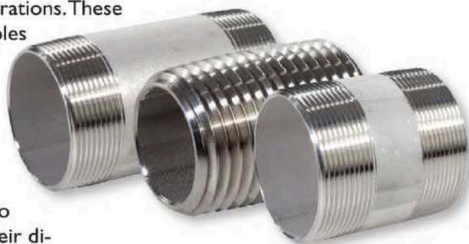
The PSQ 2.5" sanitary gauge is now available with a 3/4" fractional seal and Tri-Clamp® connection, bottom or back mount. All PSQ series gauges have a 304 SS electro-polished case while the wetted parts are 316L SS with a Ra=8 Microinches. The 2.5" dial has an accuracy of ±1.5% while the 4" has an accuracy of ±1%. The gauge comes standard with a food grade glycerin fill and an industrial grade polycarbonate lens. The PSQ was designed for clean-in-place and steam-in-place installations. **WINTERS.**

www.winters.com



Stainless steel pipe nipples

Supplier has expanded its PVF product line with the addition of Schedule 40 stainless steel nipples for use in both sanitary and industrial applications ranging from dairy and food processing to cosmetics, chemicals and water treatment operations. These RoHS-compliant nipples come in sizes ranging from 1/8" up to 3" in diameter and include more than 40 individual sizes. Their stainless steel 316 conforms to ASTM A312 while their dimensions and ends conform to ASTM A733. Threads conform to ASTM B1.20.1. All sizes are in stock and Material Test Reports (MTR's) are available. **MATCO-NORCA.**
www.matco-norca.com



Functional, clean faucet line

The SENTO collection stays true to its namesake with minimal yet sensual design showing no decorative elements or useless detail. From the lavatory single-lever mixer to the widespread faucet, SENTO's personality is defined by effectiveness of function and clean, simple lines that result in a strong visual impact. "Lightness and strength" inspired the SENTO series, which transforms the object into a discrete and elegant presence in the bath space. **GRAFF.**
www.graff-faucets.com

PRODUCT NEWS



Polypropylene flexible liner vents gas appliances

Used to vent condensing gas-fired heating appliances (up to 230°F) into masonry chimneys, inactive metal vents and wood chases at 0" clearance. PVC pipe doesn't offer flexible venting for these challenging installations.

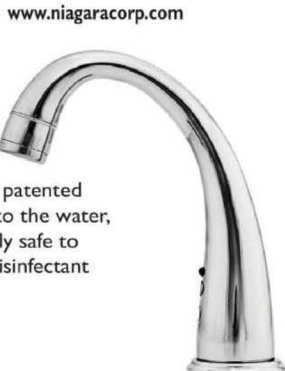
The flexible liner can also be used as a convenient combustion air pipe run to the appliance. Listed to ULC S636 venting standard. Single wall rigid pipe, fittings, adapters and flexible liner are available in diameters 2" (60mm), 3" (80mm), and 4" (100mm). **POLYFLUE.**

www.polyflue.com

Energy-saving showerhead



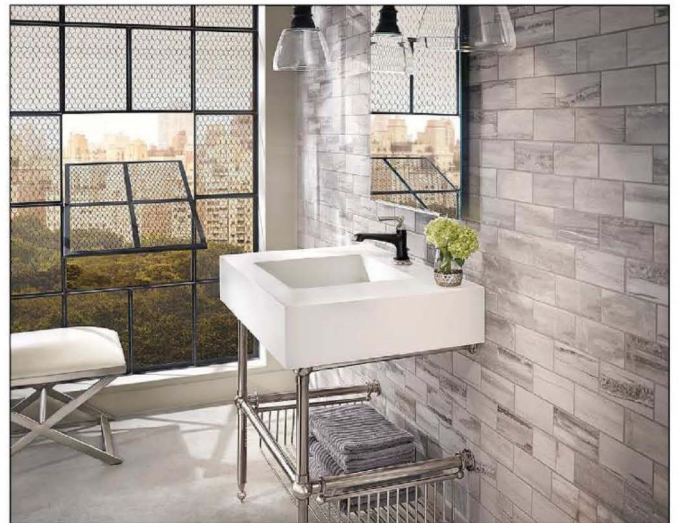
Hot Start Showerhead is a unique temperature-controlled, EPA WaterSense-certified showerhead that allows the user to turn on the shower at full flow and wait for the shower water to heat up without any worry of being wasteful. The showerhead's modern design and sleek chrome finish features three spray settings for the complete shower experience. **NIAGARA CONSERVATION.**



Ozone-infusing faucet

These faucets feature exclusive water-air patented technology that infuses ozone directly into the water, creating ozonized water that is completely safe to drink and makes an extremely effective disinfectant with many applications. **LENOVA.**

www.lenovasinks.com



Coming this fall: Designer-styled Rook bath collection

This highly stylized space created by interior designer Herb Ritz boast subtle nods to classic chess pieces. The collection combines a low spout architecture with octagonal details. The collection also includes single-handle and widespread lavatory faucets. Available fall 2015. **BRIZO.**

www.brizo.com

'Smart' flush valve

The Pulsar V2.0 with SmartChoice Technology makes saving water seamless. The V2.0 is a sensor-activated dual flush valve that, based upon how long the user remains within the range, will determine the flush volume needed. Pulsar V2.0 and Pulsar share the same simple self-contained electronics, the longest-lasting lithium battery and a US-Manufactured solenoid. Together 375,000 continuous flushes have been achieved on a single battery. **DELANY PRODUCTS.**

www.delanyproducts.com



Pedestal Lav

The new Blaze vitreous china pedestal lavatory features a 4" faucet configuration; 24" x 20" lav bowl; 35 1/8" height; concealed front overflow; generous wash basin with large deck space and subtle back-splash, in white and biscuit. **GERBER INTERNATIONAL.**

www.gerberonline.com

Polypropylene ball valve



Introducing the new Model 500AB Polypropylene Ball Valve. This valve is compatible with the polyfusion technology to achieve a one-piece piping system. It features a dezincification resistant ball/stem and offers low-torque operation. The 500AB carries the NSF372 and NSF14 certifications as well as a UPC listing. Sizes range from 1/2" through 2". **RED-WHITE VALVE CORP.**

www.redwhitevalvecorp.com