

# The Woodlands LifeStyles & Homes

TEXAS

January 2017

HOME IS  
WHERE THE  
Heart Is

The Woodlands  
MEDICAL  
PROFILES

PHOTO BY SUSAN FRIDAY

[www.thewoodlandslifestylesandhomes.com](http://www.thewoodlandslifestylesandhomes.com)

\*\*\*\*\*AUTOMATED AD C 481  
LINDA JENNINGS, PRESIDENT  
JENNINGS AND COMPANY  
436 WOODLAND DR  
SARASOTA FL 34234-3772

39373  
S1 P1

PRSR1 STD  
U.S. POSTAGE  
PAID  
FT BEND PUBLISHING  
10707 Corporate Dr  
Ste. 170 Stafford, TX  
77477-4092



Working with the constraints of being unable to deviate too much from the original plan, the designer planned for the arced wall, removed one water closet, plumbed the new double vanity wall, and also moved electrical to key locations. Opposite the arced shower wall is the Amalfi tub against the modularArts Bloom panels. The custom double vanity creates a visually striking triangle amidst these three elements. The choice of the Oceanside Blu iridescent glass mosaic and the Sherwin Williams Quest Gray paint are motivated by the clients' spirituality and love for the color purple. The room is contemporary and linear, but softened by the floral curves of the modularArts and arced shower wall. The new serene layout creates a sense of togetherness.

**Powder Room: First Place**

**Lori Carroll, Lori Carroll & Associates  
Tucson, Arizona**

**Co-designers: Esthela J. Celaya,  
Originate Interior Design LLC; Debra  
Gelety, Lori Carroll and Associates**

*The Rays of Dusk* – The rich hues in the specialty paint finish and a glass-bead wall covering became the backdrop for layers of light. Hand-formed, angle-cut crystal rods are infused with mineral crystalline that creates a spectacular display over the vanity. Another level of lighting provides depth as it illuminates the polished onyx countertop and glass sink from underneath. Textured metal banding serves as backsplash and apron around the countertop. The crystalline sconces spotlight the beautiful objects throughout the space. Backlighting with LED brings out the tones and deep layers of the material. Ambient light, quality materials, and rich tones and textures add to this amazing space.

**New Year! New Look! Call Today!**



**CHENE INTERIORS**

KITCHEN AND BATH REMODELING  
FLOORING • TILE • GRANITE • DRAPERY • UPHOLSTERY

[www.cheneinteriors.com](http://www.cheneinteriors.com)

281-364-1744 • 281-660-0703

**OVER 20,000 READY-MADE  
PICTURE FRAMES @  
FACTORY-DIRECT PRICES**



**HOUSTON'S LARGEST SELECTION OF:**  
Ready-Made | Framed Mirrors | Custom | Quality Oil  
Frames | (bathroom | Frames | Paintings  
mirrors, etc)

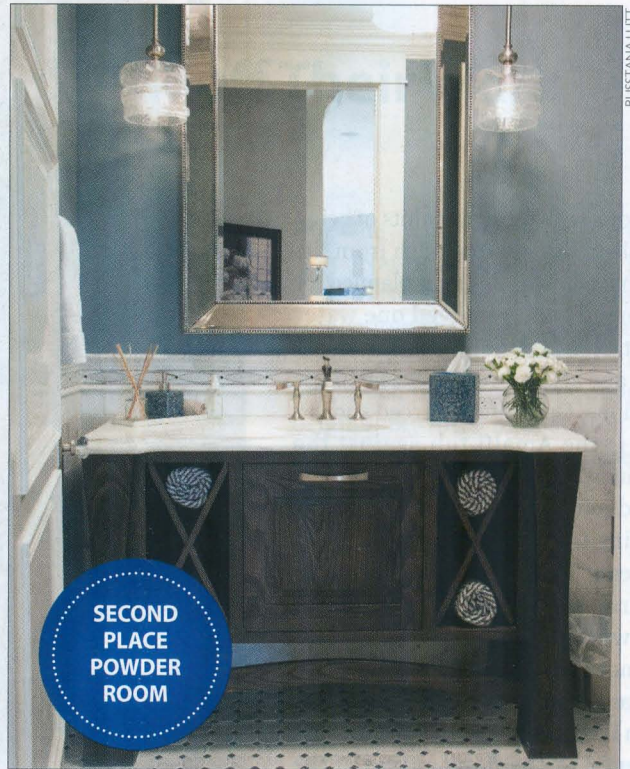
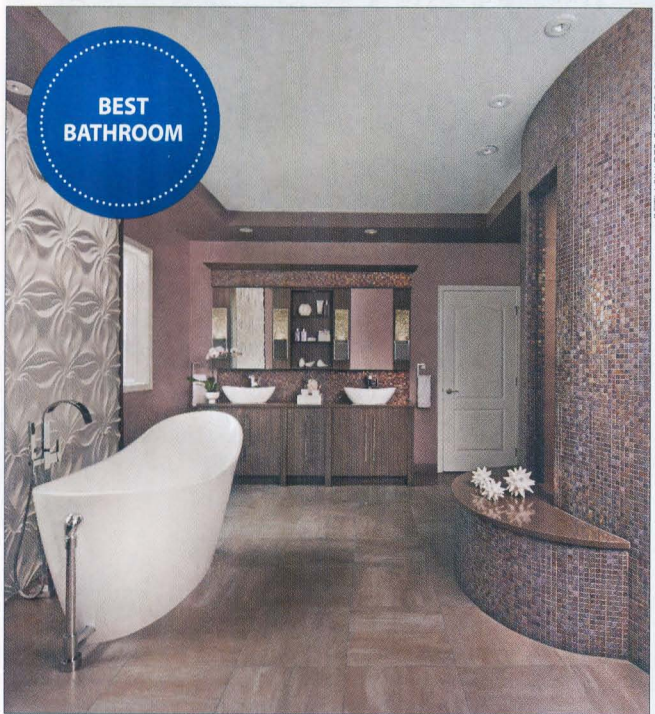
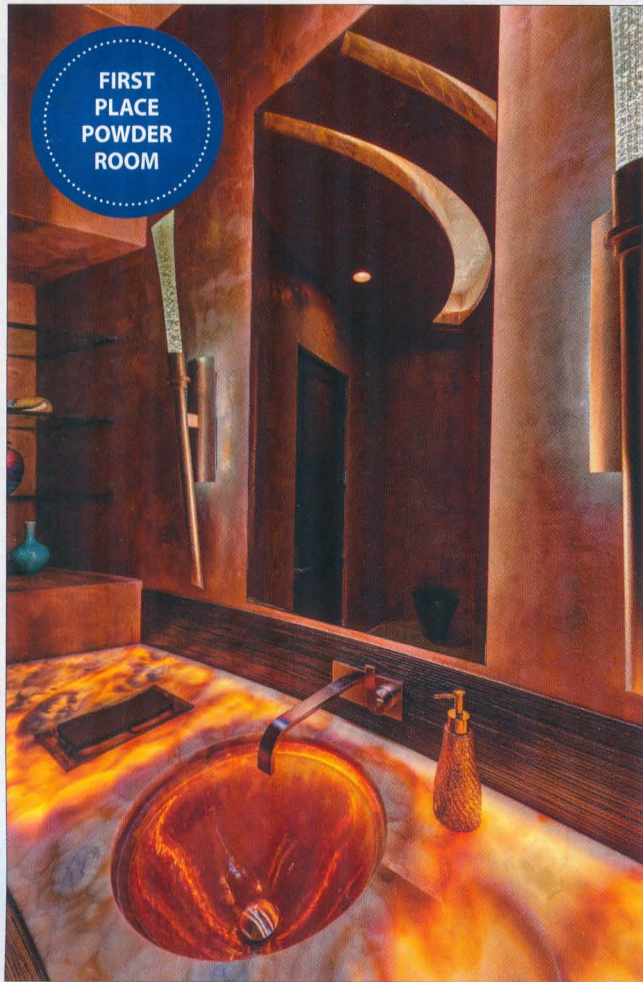
- Open to the Public & Trade
- Commercial Accounts & Decorators Welcome
- Family Owned & Operated for Over 34 Years



**713.974.6000**  
[WWW.WAREHOUSEFRAMES.COM](http://WWW.WAREHOUSEFRAMES.COM)  
MON-FRI 10-6, SAT 10-5



3815 FONDREN RD. | HOUSTON, TX 77063 (BETWEEN RICHMOND & WESTPARK)



**Powder Room: Second Place**  
**Stephanie A. Bruntz, CKD, Studio B Design**  
**Kearney, Nebraska**

*Classic Vintage, Modern Touch* – The clients asked for a guest powder room that combines vintage elements and materials with modern styling. The designer created a custom vanity with modern leg design, rolled towel storage and a hidden area for the plumbing to the wall rather than the floor. The integrated marble vanity top features bumped corners, heavily sealed for stain resistance. A classic white undermount sink accents the depth of the marble vanity top. Special features include a custom-designed vanity with curvature replicated in the tile border. The curved style on the faucet repeats the lines of the mosaic tile. Decorative pendants and mirror frame give an artful sense to the room. The vanity anchors the space and marries the old vintage of the marble to the vanity’s modern sensibility.

**Powder Room: Third Place**  
**Lori Carroll, Lori Carroll & Associates, Tucson, Arizona**  
**Co-designer: Debra Gelety**

*The Euro Trip* – The client desired a European-inspired powder room with a few glitzy nuances set against products with neutral colors and lustrous finishes that illustrate both simplicity and sophistication. A translucent glass countertop finished with LED lights fills the room with soft luminescence. Glass tiles laminated in silver leaf sparkle and