

A CLASSIC STYLE REFRESHED

Nostalgic Warehouse introduces beautiful Waldorf White Milk Glass Knobs

(Denver, CO – January 30, 2018) Proving the adage “everything old is new again,” Nostalgic Warehouse has expanded its line of Waldorf knobs to include a new take on a vintage-inspired classic – white milk glass. This translucent glass originated in 16th century Venice and was especially popular in the United States during the early 1900s as dishware, vases and lighting fixtures. Nostalgic Warehouse has brought classic milk glass back to the fashion forefront with a new line of beautiful hardware. By pairing the milky glass with an octagonal shape, the company has created a stunning look that is certain to complement a wide variety of décors.

“Milk glass continues to be popular among collectors and is prized for having a vintage look and a modern aesthetic,” said Emma Kane, Marketing Director for Nostalgic Warehouse. *“These knobs are truly beautiful with an almost luminous quality that is quite unique. Depending on backplate and finish choices, it’s possible to design looks that range from elegant and traditional to chic and contemporary.”*

Measuring 2 ¼" in diameter, the White Milk Glass Knobs are mounted on a solid forged brass plate for exceptional durability and beauty. With twelve different brass plates to choose from, customers have the opportunity to create a combination that suits their personal style. Options include long backplates with Craftsman-style cutouts, traditional rosettes with intricate rope detailing, and short backplates with bold geometric shapes. Further customization is available by choosing one of eight distinctive finishes, including Antique Brass, Antique Pewter, Bright Chrome, Oil-Rubbed Bronze, Polished Brass, Satin Nickel, Timeless Bronze and Unlacquered Brass.

As part of the company’s popular Nostalgic Collection™, White Milk Glass Knobs are available at fine hardware retailers throughout the U.S. and Canada and may be purchased online at select websites. For more information about this beautiful collection and a listing of dealers, visit www.nostalgicwarehouse.com

ABOUT NOSTALGIC WAREHOUSE

Founded in 1980 by an antique store owner, Nostalgic Warehouse has grown from a modest proprietorship to a flourishing company. Known for its elegant styles and exceptional craftsmanship, the company is revered by restoration contractors, antique dealers, homeowners, designers, builders and architects who appreciate the uncommon beauty and quality of its product line. Unlike competitors who rely on a cheaper cast or stamped brass, Nostalgic Warehouse uses only hot-forged brass for a solid, durable construction that can accurately display the intricacies of vintage design. Their brass knobs are completely recyclable, and their crystal knobs are made of real, lead crystal, not glass. In keeping with the brand’s vintage roots, they offer customers the option of using historically accurate mortise locks. Nostalgic Warehouse products are designed to last a lifetime.



Bright Chrome Studio Short Plate with Waldorf White Milk Glass Knob



Antique Brass Craftsman Long Plate with Waldorf White Milk Glass Knob

CONTACT:

Nostalgic Warehouse Contact:
4607 Monaco St.
Denver, CO 80216
(800) 522-7336
marketing@nostalgicwarehouse.com

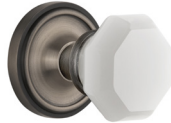
PR Agency Contact:
Linda Jennings
Jennings and Company
Phone: 941-351-1005
Linda@jenningsandcompany.com

Popular Combinations with the Waldorf White Milk Glass Knob

For more combinations visit www.nostalgicwarehouse.com and use the **HARDWARE DESIGNER** to mix-and-match any plate or rosette with the Waldorf White Milk Glass Knob.



Rope Rosette
in Polished Brass



Classic Rosette
in Antique Pewter



Cottage Short Plate
in Oil-Rubbed Bronze



Studio Short Plate
in Satin Nickel



Craftsman Long Plate
in Antique Brass



Deco Long Plate
in Bright Chrome



Egg & Dart Long Plate
in Polished Brass



Victorian Long Plate
in Antique Brass



New York Long Plate
in Bright Chrome



Prairie Long Plate
in Oil-Rubbed Bronze