

Beautiful

KITCHENS & BATHS

READY TO
REMODEL?
READ THIS
FIRST!

page 22

GET A
KITCHEN
THAT
MAKES
YOU
HAPPY

PRETTY &
PRACTICAL
COUNTERTOP
IDEAS

MODERN
FARMHOUSE
LOOKS
WE LOVE

UPDATE
YOUR BATH
WITH COLOR

SUMMER 2018
Display until Sept. 10

BHG.com/KitchenBath

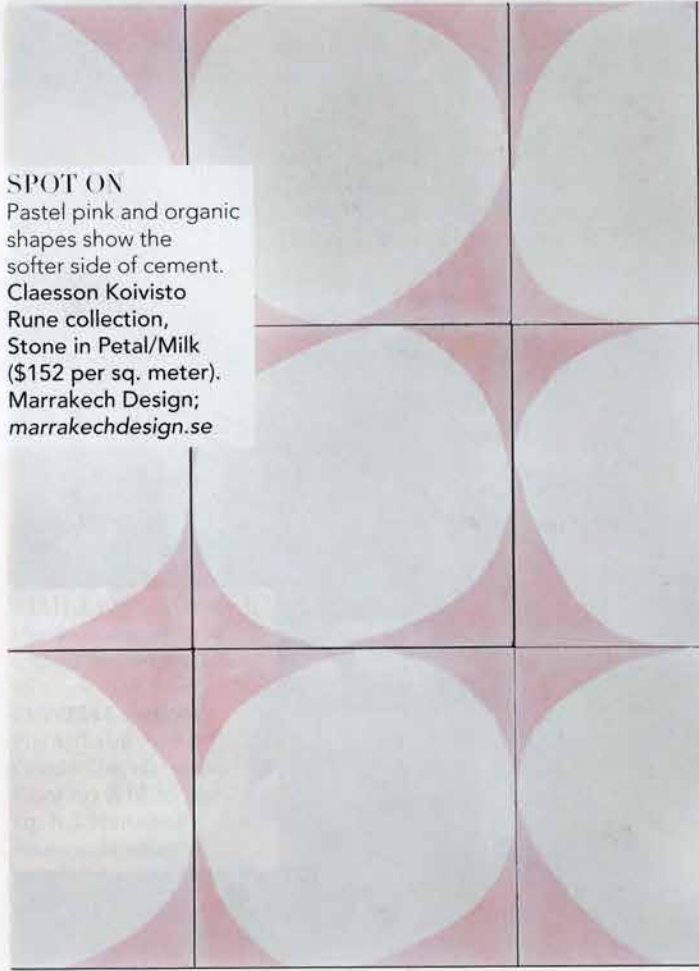


\$7.99 U.S.

BHG specials™

SPOT ON

Pastel pink and organic shapes show the softer side of cement. Claesson Koivisto Rune collection, Stone in Petal/Milk (\$152 per sq. meter). Marrakech Design; marrakechdesign.se



SOMETHING BLUE

Embrace the pastel trend with simple metal pendants. Young House Love Metal Convertible Pendant in Clear Sky Blue (\$149). Shades of Light; shadesoflight.com

GRAY MATTER

Warm gray highlights the graceful contours of this compact freestanding soaker. Edge Tub in Stone Grey (\$6,514). Victoria + Albert; vandabaths.com



NATURAL BEAUTY

Leather pulls add subtle flair to a clean-lined vanity. Modulus 36-inch Lavatory with Vanity (\$1,600 for vanity only; \$2,400 as shown with sink). DXV; dxv.com

Bold cement tiles set the bath's playful, contemporary style. The cabinets' high-gloss lacquer finish turns simple vanities into fetching furniture forms.



Pattern Play

A designer banishes boring and creates an extraordinary bath retreat at her family's weekend home.

WRITER *Aan M. Wilson*
PHOTOS *Julie Soefer*
FIELD EDITOR *Donna Talley*



THIS PHOTO: Unlacquered brass fixtures sparkle on the shower door and inside the subway-tile-lined space. **OPPOSITE, TOP LEFT:** Courtnay found the gleaming garden stool on sale at a big box store. **OPPOSITE, TOP RIGHT:** Nautical-inspired rope-and-brass towel rings nod to the home's coastal setting. **OPPOSITE BOTTOM:** "I saw that chandelier just sitting on top of a moving blanket in a shop corner," Courtnay says. "I told the owner, 'Don't bother hanging it up. I am taking it home!'"

Dramatic Interlude



Sophisticated colors, classic patterns, and bold textures set the stage for a bath retreat that gives its owners room to unwind.

WRITER *Lauren Iverson*
PHOTOS AND STYLIST *Laura Hull*



OPPOSITE: Shimmery mixed mosaic tiles in honed Thassos marble frame the vanity mirrors, creating a pleasing counterpoint to the dark walnut cabinetry and smoky-gray marble countertops. The wall-mount faucet is finished in polished nickel. THIS PHOTO: In a room full of eye-catching details, the tub niche draws attention for its elegant simplicity.



ABOVE: Dual vanities take advantage of the room's generous footprint. The oval window wasn't part of the original plans; it was added when it became clear that the bath would need more natural light. OPPOSITE: The reproduction tub filler, inspired by a mid-19th-century design, looks right at home against a backdrop of classic paisley wallpaper.



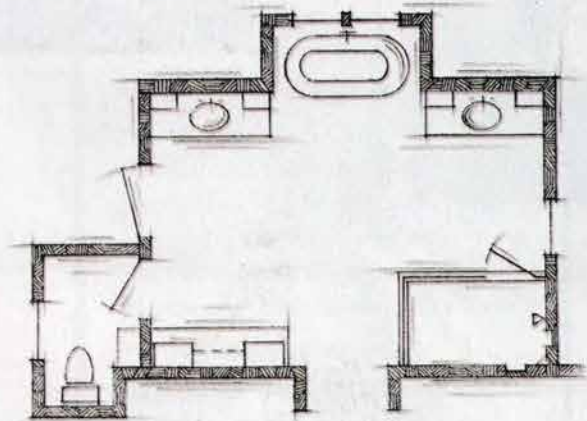
BEFORE A BATH CAN BECOME BEAUTIFUL,

there must be inspiration. For some, that inspiration may come from a curvaceous tub; for others, a sparkling chandelier. For Kristina Detter, it was a dramatic, high-impact paisley wallpaper, which served as the jumping-off point for the new master bath in her family's Oakland home. With the wallpaper as her guide, designer Amy Fischer brought Kristina's visions of glamour and sophistication to life.

With a fast-paced lifestyle keeping her, husband Tony, and their two young daughters on the move, Kristina envisioned the bath as a place where life could slow down. She also wanted it to be visually stunning. She loved the idea of combining textures and materials in a limited color palette so the individual elements—wallpaper, lighting, fixtures—could shine. “I have very clear likes and dislikes,” she says. “Amy was pivotal in expanding my horizons and providing materials for me that I otherwise would have never had access to or seen.”

Natural light floods into the master bath through sizable windows and a skylight, bouncing off the marble mosaic tile. Up high, silvery-black textured wallpaper with reflective properties dresses up the barrel ceiling and complements the dark paisley

the plan



Separate vanities, a large shower with dual controls, and a private toilet compartment make this bath well-suited for sharing. A tall cabinet opposite the vanity wall provides bonus storage outside the main grooming area.

THIS PHOTO: Amenities for Michelle Trumbo on the left and Joe Whiteside on the right enable the spouses to use the bath simultaneously. Sunlight pouring in through the large windows minimizes the need for artificial lighting during the day. Recessed ceiling lights kick in at night. OPPOSITE: The mirrored top of this go-anywhere table often holds fresh-picked flowers and greenery along with bathing accessories.





Balanced Outlook

*A new master bath doubles up
on simplicity and symmetry
to create a sophisticated
getaway for two.*

WRITER *Mercyn Kaufman*
PHOTOS *Rett Peck*
FIELD EDITOR *Donna Talley*



“We chose a neutral palette, so the decorating wouldn’t compete with the view.”

— KIMBERLY HARPER, INTERIOR DESIGNER

sherwin-williams.com [P]. **Cabinet pulls and knobs** from the Bar series in polished chrome—Lew's Hardware by Lewis Dolin, Westchester County, New York; 914/232-7465; lewisdolin.com. **Countertops** White Macaubas quartzite—through Intown Design, Atlanta; 404/812-3820; intowndesigninc.com. **Tub** Rachel soaking bathtub, discontinued; similar items available—Wyndham Collection; 888/522-8476; wyndhamcollection.com for a retailer near you. **Tub and sink faucets, shower fixtures**—Grohe America, Inc.; 800/201-3407; groheamerica.com. **Shower tile** glazed terra-cotta—The Tile Shop; 888/398-6595; tilshop.com. **Floor tile** porcelain—Specialty Tile Products; specialtytile.com. **Sconces on mirror** discontinued, similar items available—Kichler Lighting; kichler.com to see products and to find a retailer near you. **Ceiling light** Black Metal Hexagon Pendant Lamp—World Market; 877/967-5362; worldmarket.com. **Wall paint** North Star SW 6246—The Sherwin-Williams Co.; 800/474-3794; sherwin-williams.com [P]. **Cabinetry and open shelving** custom—homeowners' collection.



DRAMATIC INTERLUDE

Pages 110–115

Interior design: Amy Fischer, Spectrum Interior Design, Inc., Mountain View, California; 605/948-1913; info@spectruminteriordesign.com; spectruminteriordesign.com. **Construction:** Owen Signature Homes, Los Altos, California; 650/948-9420; info@owenhomes.com; owenhomes.com. **Vanity and linen cabinet** custom

design—Amy Fischer, Spectrum Interior Design, Inc., Mountain View, California; 605/948-1913; info@spectruminteriordesign.com; spectruminteriordesign.com. **Fabrication of vanity and linen cabinet**—Wood Works Custom Cabinetry; woodworkscustom.com. **Vanity knobs** 1¼-inch Round Glass Knob in polished nickel, **cup pulls** 4-inch Round Glass Pull in polished nickel; **pulls** 4- and 6-inch Chatham Pull in polished nickel—Restoration Hardware; rh.com. **Tub** Victoria + Albert York Traditional Double-Ended Tub, **sinks** Kohler Devonshire undermount bathroom sink, **sink and tub fixtures** Herbeau Creations Royale in polished nickel, **shower fixtures** California Faucets 8 Jet Showerhead in polished nickel—through Belmont Hardware; belmonthardware.com. **Pendant lights and chandeliers** Constructivism in Midnight Grey—Fine Art Lamps; fineartlamps.com. **Window coverings** Etoile 1784—Conrad Shades; 866/426-6723; conradshades.com [T]. **Shower wall** honed Thassos marble tile, **rail molding** AKDO Classic Rail Molding in honed Thassos marble, **mirror frame molding** AKDO Narrow Liner in honed Thassos marble, **shower floor** Thassos honed marble tile—All Natural Stone; allnaturalstone.com. **Flooring** polished white Carrara mosaic, **shower wall panel and shampoo niche offset** honed mosaic Mamara Grey marble by Alyse Edwards, style We're Not Trying, We Just Are—Bedrosians; bedrosians.com. **Vanity** Voguebay polished and honed natural Split Plus Carrara marble—Formation Stone; formationstone.com. **Ceiling paper** Phillip Jeffries Chambers of Charcoal Limited Quartz 1020—DeSousa Hughes; desousahughes.com [T]. **Wallpaper** Malabar CS Gilver Charcoal 95/7043—Kravet; 800/645-9068; kravet.com. **Side table** Ceramic O—Anthem San Francisco; anthemssf.online.



BALANCED OUTLOOK

Pages 116–121

Interior design: Kimberly Harper, Harper Howey Interiors, Fayetteville, Arkansas; 479/750-7300; info@harperhoweyinteriors.com; harperhoweyinteriors.com. **Cabinet hardware** Lily Pull in nickel—Lisa Jarvis; lisa-jarvis.com. **Countertops** Calacatta Gold marble—contact local cut stone suppliers. **Sink and shower faucets and tub filler** Virage in polished nickel—Brizo; brizo.com. **Tub** Parisian 1-146—MTI; mtibaths.com. **Mirrors** LED rectangular wall mirror—Dimond Home; elkgrouppinternational.com. **Chandelier** Tilda—Arteriors Home; 877/488-8866; arteriorshome.com [T]. **Watercolor artwork** “La Femme Indigo I” on Italian paper by Donna Talley—Donna Talley Original Works; donna@donnatalley.com; Facebook: Donna Talley Original Works. **Flooring and shower walls** Statuario Extra—Elganza; elganzatiles.com. **Shower floor tile** Carrara marble hex mosaic—Daltile; 800/933-8453; daltile.com. **Window and shower door** custom—RGC Glass, Inc.; rgc-glass.com.

RESOURCES

marble, **perimeter countertops** Jet Mist leathered granite—Burlington Marble & Granite, Shelburne, Vermont; 802/860-1221; burlingtonmarbleandgranite.com. **Island sink**—Franke; 800/626-5771; franke.com. **Island faucet** Traditional PLP with side spray—Waterstone Co.; 888/304-0660; waterstoneco.com. **Perimeter sink** from the Shaws Original collection, **perimeter faucet** Perrin & Rowe bridge faucet with side spray—Rohl; 800/777-9762; rohlhome.com. **Range hood, duct-vented grill**—John Marius, Champlain Metals; champlainmetals.com. **Refrigerator**—Sub-Zero, Inc.; 800/222-7820; subzero.com. **Range, wall ovens**—Wolf Appliance, Inc.; 800/332-9513; wolfappliances.com. **Dishwasher**—Miele, Inc.; 800/463-0260; mieleusa.com. **Windows**—Marvin Windows and Doors; 888/537-8268; marvin.com. **Pendant lights** Thomas O'Brien Extra Large Hicks Pendant in hand-rubbed antique brass with white glass, **wall sconces above windows** E.F. Chapman Boston Functional Library pendants in bronze—Visual Comfort & Co.; 866/344-3875; visualcomfortlightinglights.com. **Counter stools** in driftwood finish, **leather for stools** Parisian Blue with brass accents—Lee Industries; 800/892-7150; leeindustries.com. **All glasses, dishes, accessories on open shelving**—through Lillian August Interiors, Norwalk Design Center, Norwalk, Connecticut; 203/847-3314; lillianaugust.com.



PATTERN PLAY

Pages 94–99

Interior design: Courtney Tartt Elias,

Creative Tonic Design, Houston; 713/533-9000; creativetonicdesign.com.

Countertops Mink Marble—IGM; igmcorp.net. **Cabinet hardware** 12-inch Kanota Brass Pulls—Rejuvenation; 888/401-1900; rejuvenation.com. **Wall light above vanity mirror** Bistro Four Light Bath Sconce—Circa Lighting; 877/762-2323; circalighting.com. **Chandelier** vintage—Vieux Interiors, Houston; 713/626-9500; vieuxinteriors.com. **Mirrors** custom—Frame Tek, Houston; 713/862-4747. **Sink and shower faucets and wall-mount tub filler** Keaton widespread faucet, uncoated, polished brass—Newport Brass; newportbrass.com. **Tub** los—Victoria & Albert; 800/421-7189; vandabaths.com/usa. **Flooring** Casablanca Green—Cement Tile Shop; 800/704-2701; cementtileshop.com. **Shower wall tile** MOD 0190 in Arctic White—Daltile; 800/933-8453; daltile.com. **Window and glass shower door** custom—TP Glass, Houston; 713/201-8252; tpglass.com.



FIVE-STAR GETAWAY

Pages 100–105

Architecture: Matthew Thomas, Matthew Thomas Architecture, Scottsdale, Arizona; 602/301-3618; mtarchitecture.com.

Interior design: Caroline Tyler DeCesare and Michelle Grams, DeCesare Design Group, Inc., Mesa, Arizona; 480/668-5490; info@decasaredesigngroup.com; decasaredesigngroup.com.

Construction: Brimley Development, Phoenix; 480/247-7770; brimdev.com.

Cabinetry in custom gray with silver leaf

detailing, **mirrors**—Rysso Peters, Scottsdale, Arizona; 480/946-0088; ryssopeters.com. **Trim, doors**—Doorworks, Scottsdale, Arizona; 480/367-1540; doorworkusa.com. **Ceiling light fixtures** Dickinson large chandelier by Kate Spade New York, **sconces** Camille by Suzanne Kastler—Circa Lighting; 877/762-2323; circalighting.com. **Cabinet hardware**—Restoration Hardware; 800/762-1005; rh.com. **Sinks**—Kohler; 800/456-4537; kohler.com. **Faucets, shower and tub fixtures**—Newport Brass; 949/417-5207; newportbrass.com. **Floor and shower wall tile** Bianco Venatino, **countertops**—Arizona Tile; arizonatile.com. **Shower floor tile** Essex Mosaic MRBBASWEA-ES—Bedrosians Tile and Stone; bedrosians.com. **Shower wall accent tile**—Artistic Tile; 877/237-4097; artistictile.com. **Drapery and Roman shade fabrics**—Cowtan & Tout; cowtan.com. **Rug**—Surya; surya.com. **Tub** Naos—BainUltra; 800/463-2187; bainultra.com. **Table at tub**—Worlds Away; worlds-away.com. **Pink upholstered stool**—Lee Industries; leeindustries.com.



OCEAN-MINDED

Pages 106–109

Architecture and interior design: Ili Hidalgo-Nilsson, TerraCotta Design Build Co., Decatur, Georgia; 404/377-0906; terracottadesignbuild.com.

Construction: TerraCotta Design Build Co., Decatur, Georgia; 404/377-0906; terracottadesignbuild.com.

Cabinet paint Gale Force SW 7605—The Sherwin-Williams Co.; 800/474-3794;

sherwin-williams.com [P]. **Cabinet pulls and knobs** from the Bar series in polished chrome—Lew's Hardware by Lewis Dolin, Westchester County, New York; 914/232-7465; lewisdolin.com. **Countertops** White Macaubas quartzite—through Intown Design, Atlanta; 404/812-3820; intowndesigninc.com. **Tub** Rachel soaking bathtub, discontinued; similar items available—Wyndham Collection; 888/522-8476; wyndhamcollection.com for a retailer near you. **Tub and sink faucets, shower fixtures**—Grohe America, Inc.; 800/201-3407; groheamerica.com. **Shower tile** glazed terra-cotta—The Tile Shop; 888/398-6595; tilshop.com. **Floor tile** porcelain—Specialty Tile Products; specialtytile.com. **Sconces on mirror** discontinued, similar items available—Kichler Lighting; kichler.com to see products and to find a retailer near you. **Ceiling light** Black Metal Hexagon Pendant Lamp—World Market; 877/967-5362; worldmarket.com. **Wall paint** North Star SW 6246—The Sherwin-Williams Co.; 800/474-3794; sherwin-williams.com [P]. **Cabinetry and open shelving** custom—homeowners' collection.



DRAMATIC INTERLUDE

Pages 110–115

Interior design: Amy Fischer, Spectrum Interior Design, Inc., Mountain View, California; 605/948-1913; info@spectruminteriordesign.com; spectruminteriordesign.com. **Construction:** Owen Signature Homes, Los Altos, California; 650/948-9420; info@owenhomes.com; owenhomes.com. **Vanity and linen cabinet** custom

design—Amy Fischer, Spectrum Interior Design, Inc., Mountain View, California; 605/948-1913; info@spectruminteriordesign.com; spectruminteriordesign.com. **Fabrication of vanity and linen cabinet**—Wood Works Custom Cabinetry; woodworkscustom.com. **Vanity knobs** 1¼-inch Round Glass Knob in polished nickel, **cup pulls** 4-inch Round Glass Pull in polished nickel; **pulls** 4- and 6-inch Chatham Pull in polished nickel—Restoration Hardware; rh.com. **Tub** Victoria + Albert York Traditional Double-Ended Tub, **sinks** Kohler Devonshire undermount bathroom sink, **sink and tub fixtures** Herbeau Creations Royale in polished nickel, **shower fixtures** California Faucets 8 Jet Showerhead in polished nickel—through Belmont Hardware; belmonthardware.com. **Pendant lights and chandeliers** Constructivism in Midnight Grey—Fine Art Lamps; fineartlamps.com. **Window coverings** Etoile 1784—Conrad Shades; 866/426-6723; conradshades.com [T]. **Shower wall** honed Thassos marble tile, **rail molding** AKDO Classic Rail Molding in honed Thassos marble, **mirror frame molding** AKDO Narrow Liner in honed Thassos marble, **shower floor** Thassos honed marble tile—All Natural Stone; allnaturalstone.com. **Flooring** polished white Carrara mosaic, **shower wall panel and shampoo niche offset** honed mosaic Mamara Grey marble by Alyse Edwards, style We're Not Trying, We Just Are—Bedrosians; bedrosians.com. **Vanity** Voguebay polished and honed natural Split Plus Carrara marble—Formation Stone; formationstone.com. **Ceiling paper** Phillip Jeffries Chambers of Charcoal Limited Quartz 1020—DeSousa Hughes; desousahughes.com [T]. **Wallpaper** Malabar CS Gilver Charcoal 95/7043—Kravet; 800/645-9068; kravet.com. **Side table** Ceramic O—Anthem San Francisco; anthemssf.online.



BALANCED OUTLOOK

Pages 116–121

Interior design: Kimberly Harper, Harper Howey Interiors, Fayetteville, Arkansas; 479/750-7300; info@harperhoweyinteriors.com; harperhoweyinteriors.com. **Cabinet hardware** Lily Pull in nickel—Lisa Jarvis; lisa-jarvis.com. **Countertops** Calacatta Gold marble—contact local cut stone suppliers. **Sink and shower faucets and tub filler** Virage in polished nickel—Brizo; brizo.com. **Tub** Parisian 1-146—MTI; mtibaths.com. **Mirrors** LED rectangular wall mirror—Dimond Home; elkgroupinternational.com. **Chandelier** Tilda—Arteriors Home; 877/488-8866; arteriorshome.com [T]. **Watercolor artwork** “La Femme Indigo I” on Italian paper by Donna Talley—Donna Talley Original Works; donna@donnatalley.com; Facebook: Donna Talley Original Works. **Flooring and shower walls** Statuario Extra—Elganza; elganzatiles.com. **Shower floor tile** Carrara marble hex mosaic—Daltile; 800/933-8453; daltile.com. **Window and shower door** custom—RGC Glass, Inc.; rgc-glass.com.