

NKBA

INNOVATION+ INSPIRATION

THE OFFICIAL PUBLICATION OF THE NATIONAL KITCHEN + BATH ASSOCIATION

SEASIDE REDO

KITCHEN + BATH TREND REPORT
PURSUING WHOLE-HOME PROJECTS
BATH VANITIES + TUBS

JANUARY + FEBRUARY 2019 / NKBA.ORG

VANITY FARE

Having it your way has never been easier

BY ALICE LIAO

WETSTYLE

Déco floor-mounted vanities come in five widths, ranging from 24 inches to 60 inches, and a variety of finishes that users can mix and match. The unit can also be specified in a Mozambique or torrefied (a thermo-curing process) eucalyptus premium wood finish (shown). wetstyle.ca / **CIRCLE 858**



ROBERN

The modular Profiles Collection features tip-out, split-plumbing, or full-width vanity drawers in four widths and multiple heights that can be stacked or ganged. Units can be specified with night-lights, electrical outlets, drawer inserts, and glass or metal organization kits. robern.com

CIRCLE 859





HASTINGS TILE & BATH

The modular Urban Style Collection offers floor- and wall-mounted vanities in multiple sizes and a variety of door and drawer configurations. Available in a range of finishes, the vanities can be paired with a solid-surface, cement resin, high-pressure laminate, or porcelain countertop.

hastingstilebath.com / CIRCLE 860



THE FURNITURE GUILD

Inspired by mid-century modern design, Josie is offered in multiple configurations in widths of 24 inches to 72 inches. Available in a variety of wood finishes and custom paint colors, the unit is shown here in French walnut with brass metal trim.

thefurnitureguild.com / CIRCLE 861

In the pursuit of bathrooms that double as private oases, vanities that offer a personal touch are in high demand.

“Designers and homeowners want to know that they can customize their vanities to suit their needs,” which are more than merely aesthetic, says Bob Gifford, director of business development for importer, distributor, and retailer Hastings Tile & Bath, in New York City. Today’s vanities also play a critical role in ensuring that daily routines go off without a hitch. Thankfully, options for boosting style and functionality abound.

While local cabinetmakers and woodworkers often serve as a designer’s primary source for custom vanities, manufacturers are also stepping up with an array of flexible solutions. Modular systems, for example, allow users to mix and match storage components and accessories to accommodate a wider variety of bathrooms.

Some manufacturers, such as The Furniture Guild, make their vanities to order. The manufacturer offers its designs in a wide range of sizes and configurations, as well as 50 wood finishes and nine metal finishes, “so you can get things a gazillion different ways,” says company president and CEO Hib Johnson. The brand also has a custom division, which has seen a sharp increase in business.

Manufacturers that do custom fabrication may have the edge over the “average woodworker,” says Mark Wolinsky, president of the Canadian brand Wetstyle. “Manufacturers work through a lot of issues over multiple pieces,” which enables them to refine production. The result: products with more elegance and a higher level of finish.

Because the need for storage is universal, furniture-style vanities continue to dominate the market. Especially in older homes, storage is often scarce. “We’re always trying to get as much [storage] in because usually the clients haven’t had good storage in their old bathrooms,” says designer Tanya Woods, AKBD, CAPS, of Bloomfield Hills, Mich.-based XStyles Bath + More. Wall-mounted units are growing in popularity and can lend a feeling of openness to compact bathrooms, but many homeowners would rather have the additional space.

Though double sinks can eat up valuable counter space, they’re still popular in master baths. Projects with larger footprints and budgets are installing custom units that extend upward of 80 inches, or two furniture-style vanities with an additional storage unit in between. Of the latter, “It’s a very separated, personalized design,” says Marianne White, director of dealer development for Wood-Mode. Instead of communal storage, the message is, “That’s your stuff, this is mine,” she notes.

Of course, 24-inch-wide and 36-inch-wide vanities still top sales, as the majority of bathrooms are roughly 8 feet by 5 feet, Wolinsky points out.

To better utilize the space under the sink, drawers with U-shaped cutouts to accommodate plumbing are replacing cabinet doors. Or Woods keeps the doors but installs pullout trays

Bath Vanities

WOOD-MODE

Designer Krista Benton, AKBD, CAPS, of CabinetWerks by Orren Pickell Builders, specified Wood-Mode Fine Custom Cabinetry's Brookhaven frameless cabinetry with Sausalito maple doors for this one-of-a-kind furniture-style vanity finished in custom royal blue.

wood-mode.com

CIRCLE 862



MICHAEL ALAN KASKEL PHOTOGRAPHY / COURTESY WOOD-MODE FINE CUSTOM CABINETRY

behind them. Her clients particularly appreciate having a tray on the bottom for easier access to the back of the cabinet. "One hundred percent of the time, it's a no-brainer," she says.

Storage accessories help minimize countertop clutter and have become commonplace. Equally desirable is lighting to illuminate drawer and cabinet interiors. In high-end baths, some vanities are fitted with towel-warming drawers.

Open shelving is gaining interest both for its accessibility and its aesthetic appeal. "This trend is also mimicked throughout the bath with the increase of floating shelves and built-in shelving for showers and wet areas," says Tim Schroeder, Duravit USA president.

With the preference for clean, transitional, and contemporary looks going strong, slab and Shaker door styles are still the go-to—but not exclusively. Woods, whose work is solely custom, has been specifying premade doors, one of which is a Shaker-like design with thinner rails; another features a beveled transition from the center panel to the frame. Clients of designer Stacy Garcia, owner of Garcia Cabinetmakers, in Valley Center, Calif., have embraced painted face-frame cabinets with inset doors.

Despite the push for personalization, vanity colors tend toward the conservative—white, beige, taupe, and gray—with a growing interest in blues. Wood finishes are natural, grayed, or cerused to accentuate the grain. "We're leaning more toward oak or woods that you can wire-brush or sandblast to really get the texture of it," White says.

Designers and manufacturers are also jazzing up vanities by incorporating metal accents, inlays, and frames, typically in warmer tones. Wolinsky attributes the use of metal to mid-century modern design, which is really taking hold in the bath, he says. Woods sees an appetite for modern vintage or glam looks, with her clients opting for either steampunk-inspired hardware or crystal handles.

These days, undermount sinks and quartz countertops are popular. For the adventurous, trough sinks have emerged as a popular alternative to double basins. Other new materials and trends are sure to follow, further expanding the possibilities for making vanities singular in design and the road to bathroom bliss more personal. ■



JAMES MARTIN VANITIES

Lakeside is a 30-inch-wide vanity made of poplar solids and veneers. The unit is equipped with an Arctic Fall solid-surface countertop, a solid-wood slatted shelf, a stainless steel towel bar, and brushed nickel hardware.

jamesmartinvanities.com

CIRCLE 863

DURAVIT

The Briosio vanity collection can be wall- or floor-mounted.

Available in five widths ranging from 15 ¾ inches to about 52 inches, the collection comes in 15 finishes, including wood veneers, seven lacquers, and a linen décor. Hardware and legs can be specified in chrome or lacquered colors.

duravit.us / CIRCLE 864





KITCHENAID

This 30-inch Smart Oven+ is the first single wall oven that comes with interchangeable attachments to enable grilling, stone cooking, and steaming, the company says. In addition to mobile connectivity, the oven offers a true convection oven, as well as color glass-touch display, and roll-out extension rack.

kitchenaid.com / **CIRCLE 870**



SCHLUTER SYSTEMS

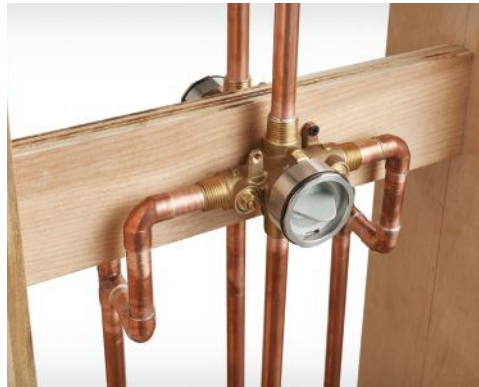
To meet the growing popularity of custom tiled showers, the brand has introduced 16 new prefabricated sloped trays for showers with the Kerdi-Drain point and Kerdi-Line linear drains. Each tray features an integrated Kerdi waterproof membrane to reduce the number of installation steps. Several sizes, thicknesses, and drain configurations are available.

schluter.com / **CIRCLE 872**

AMERICAN STANDARD

The Flash pressure balance valve allows for installation speed and flexibility with its compact size, included test cap, flat back, and sturdy mount for 2x4 wall installation. Its stub-out connection works with press-connect fittings, eliminating the need for additional solder or piping.

americanstandard-us.com / **CIRCLE 871**



RUVATI USA

Designed for tiny homes and multifamily projects, the Roma Workstation comes in two sizes, each with built-in accessories that create an efficient prep area. The workstation includes a 5-inch-deep stainless steel colander and an African mahogany cutting board. ruvati.com / **CIRCLE 873**

BLANCO

The Solenta Senso professional-style, pull-down kitchen faucet features a sensor under the spray-head docking arm for touch-free motion control. The faucet is designed with a dual spray, a quick-release magnetic hand spray, and a closed coil that's easy to clean. It comes in polished chrome or stainless steel (shown).

blancoamerica.com

CIRCLE 874

