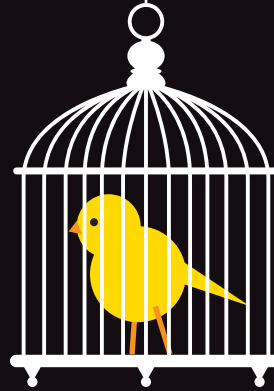
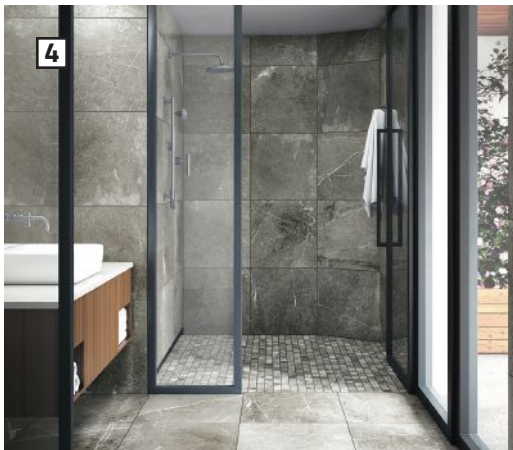
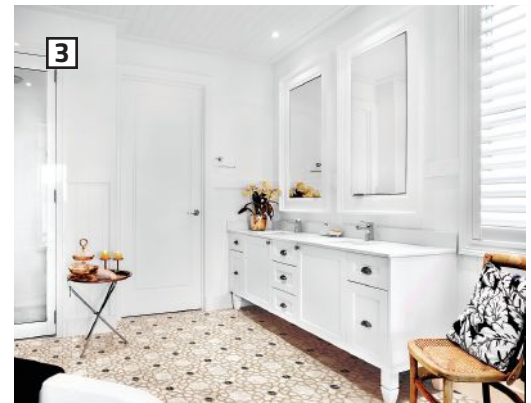


PRO REMODELER



THE CANARY SIGNS

10 INDICATORS THAT SHOW REMODELERS
CURRENT AND FUTURE MARKET CONDITIONS



1 **New Ravenna** introduces Tissé, a collection of 23 mosaic designs inspired by international weaving techniques and textiles. The designs include stone mosaic interpretations of Jute, Rattan, and Esparto. Woven designs include Tweed, Gingham, Chevron, Cabin Weave, Wicker, and Twill Ombre. Cardigan and Cable Knit mosaics recreate detailed stitching patterns; Thomas, Corduroy, and Cane Weave emulate heavily textured materials. And Maya, Perseid, Indira, and Ziggurate feature either subtle or dramatic contrasting color patterns. NewRavenna.com / CIRCLE 858

2 Attire is a new ceramic wall tile collection from **Nemo Tile + Stone**. Unlike traditional rectangular tiles, Attire (shown) comes in a triangular shape, offering flat or 3D variations and five monochromatic hues in gloss or matte finishes. The various sizes allow for customization, and the combination of flat and 3D tiles make it possible to create unique designs with texture. Meanwhile, the firm's Construkt Collection features interlocking trapezoid-shaped ceramic tiles with many combination possibilities. Nemotile.com / CIRCLE 859

3 The new, intricately styled Medina tiles are part of the Artisan Collection by **StoneImpressions**. Celebrating Mediterranean culture, these tiles come in Carrara marble or Limestone. This contemporary

take on classic design is accented with onyx or turquoise jewel tones. Ideal for bathrooms and kitchens, the intricately patterned tiles are sealed with a clear, durable acrylic topcoat. They come in 6x6 and 12x12 sizes and are available through the company's quick-ship program. Stoneimpressions.com / CIRCLE 860

4 The new Astral Plane Porcelain Tile Collection by **Crossville** echoes the look of stone within natural landscapes and comes in four colors: Altair, an ecru hue with cream highlights; Draco, a dark charcoal; Pavo, a deep brown; and Magellan (shown), a nuanced gray. The collection comes in three sizes—24x24, 12x24 and 6x24—and is ideal for mixing and matching in various patterns. Recommended for interior installations and exterior vertical applications, residential and commercial. Crossvilleinc.com / CIRCLE 861

5 **Parterre Flooring Systems** has launched the Avara Luxury Vinyl Floor and Wall Collection. The Avara 2mm collection includes 26 designs (24 planks and two tiles) curated from the firm's Vertu, Fused, InGrained, and Storri collections. Options range from wood grains and contemporary planks to delicate stone looks. Grays, browns, and other neutrals come in warm as well as cool tones. Plank designs are FloorScore Certified and Class A fire rated for use on walls in commercial interiors. Parterreflooring.com / CIRCLE 862 