

ARCHITECTURAL PRODUCTS

NOVEMBER-DECEMBER 2020 // VOL 18 NO 7

ARCH-PRODUCTS.COM

PIA·20

The shape of things is a phrase that adroitly describes the focus of the AEC world right now—both in terms of dealing with COVID's impact on construction, but also to novel and exciting forms emerging on the products front.

THE INNOVATION ISSUE

THE 2020 READERS' CHOICE

Not surprisingly, many of the drivers at the fore of design trends in 2019 remained top priorities for many architects in 2020. What's changed is that those topics have been painted in a new light.



SPECIAL CITATIONS	30
PROJECT APPLICATIONS	30
CEILING SYSTEMS	36
CONTROLS	44
CONVEYANCE	60
DECKING PRODUCTS	46
DECORATIVE METAL	40
DOORS, HARDWARE	38
GLASS WALLS/PARTITIONS	42
HVAC	44
LANDSCAPE PRODUCTS	46
LIGHTING & CONTROLS	50
RESTROOMS/PLUMBING EQUIPMENT	54
ROOFING SYSTEMS	60
SOLAR CONTROL	58
STAIR & RAILING SYSTEMS	56
SURFACES/FINISHES	37
WALL COVERINGS	36
WINDOWS	36

THE INNOVATION ISSUE

The shape of things is a phrase that adroitly describes the focus of the AEC world right now—both in terms of dealing with COVID's impact on construction, but also to novel and exciting forms emerging on the products front.



THE 2020 PRODUCT INNOVATION AWARDS:

Now in our tenth iteration, this year's award winners demonstrate the response of the manufacturing community to hot trends developing in the design community.

"Come tomorrow, will I be older?" asked the band the Yardbirds in their 1966 classic "Shapes of Things." The young men of the group, facing the turbulence of the 1960s, including the Vietnam War, certainly had reason to wonder. Some 50 years later, given the horrors of COVID, and street violence that marked the year, we might ask the same question. 2020 has been a difficult year, and it's hard to find the silver lining amid the clouds. That being said, one thing that gives me hope rolling into 2021, is what I've seen on the pages before you—those items presented here in our 10th Product Innovation Awards.

As I flipped through the section, seeking the right words to summarize this year's batch, shapes and forms immediately came to mind, as did another verse of the British Invasion song noted above: "Come tomorrow, may I be bolder than today." It sure seems the innovators behind this year's entries took up that gauntlet. At the fore was the lighting category with exciting shapes and forms that not only complement the spaces they accent,

but in many ways, create signature elements—I just love both the decorative hanging pendants on pages 50-51 of the section.

But it's just not lighting. Textures, too, titillate, be it in metal weaves and surfaces, to ceiling systems, to concrete pavers and the architectural structures that rise above them. Case in point, just look at the harmony of the really cool pavilion in San Antonio's Confluence Park on p. 46, by Lake Flato Architects, and the organically shaped Keystone Pentagon pavers before it. It even caught the attention of my snarky son, who is critical of everything.

Let me highlight some of the insider material on another entry, which to me, crystallizes the yin and yang of great partnership between architects and manufacturers to create something wonderful. On p. 40—and you are only seeing one of a bevy of photos submitted—are the offices of Expensify, by ZGF, which occupy the atrium of an Art Deco building. Cladding those cantilevered, and mind-blowing offices off the stairs, is a skin/surface material from Pure + FreeForm that

respects the grandeur of the interiors, while providing a modern look that reflected the company's tech nature, and the realities of its finite lease. The lightweight metal allowed ZGF to keep costs down, while the brass finish was a connecting detail. "P&F was the perfect fit for our project. It met our desire to find a bespoke finish for our client, and was delivered within a very aggressive time frame," says Franco Rosete AIA, Principal, ZGF Portland.

"Pure + FreeForm allowed us to maintain our values and not sacrifice aesthetics. The use of the recycled aluminum panel, in this case, allowed us to use a less substantial structure, while allowing us to use the same material for other uses to maintain continuity," adds Alan Gerencer LEED AP BD+C, Principal, ZGF. "Working with Pure + FreeForm to develop this specific finish was a true partnership in mock-ups and on-site testing."

Good hunting. May you find something that leads to similarly fantastic spaces.

—Jim Crockett

JUDGING PANEL:

Mandar Bankhele IALD

Principal, Lighting Ergonomics

Wilma Barr

Contributing Writer, Barr Publications & Editorial Services

Bernie Bauer

Principal, Integrated Lighting Concepts

Tim Butler, AIA

Technical Director, Murphy Burnham & Buttrick (MBB) Architects

David Conover

Owner, StudioConover

Darin Daguanno, AIA, LEED AP BD+C

Principal, Architect, SmithGroup

Jennifer Eng, NCIDQ LEED AP ID+C

Interior Designer, Nelson Worldwide

John Fox

President, Fox & Fox Design

Jason Granado, PLA, LEED Green Associate

Designer Associate, LandDesign

Barbara Horwitz-Bennett

Contributing Writer, Construction Business Media

Jeffrey Kahn IES

Project Manager, The Lighting Practice

Salo Levinas

Principal, Shinberg, Levinas

Deeni Linton

Design Librarian & Materials Resource Specialist; Global Design Strategies, Marriott International

John Mesenbrink

Contributing Writer, Construction Business Media

Steve Neimeister LC/MIES

Principal, tk1sc

David Rodstein IDSA LC

Principal, Rodstein Design

Chuck Ross

Contributing Writer, Construction Business Media

Connie Samla, PE, LC

Lighting Specialist, Commercial Education Specialist; Sacramento Municipal Utility District (SMUD)

Amy Shavelson, IDA, LEED AP ID+C

CoDirector of Interior Design, Senior Associate, Hickok Cole

Anita Sircar, AIA, LEED AP BD+C

Project Director, DCS Design

Daniel Stromborg

Design Director, Associate, Gensler

Ania Szulc, LEED AP BD+C

Senior Project Designer, Wight & Co.

Geoffrey Weiss

Contributing Writer, Construction Business Media

Brian Wolf, CCS, CSI, LEED AP BD+C

Vice President, Specifications, Grimm and Parker Architecture

Joshua Zinder AIA, LEED AP, NCARB

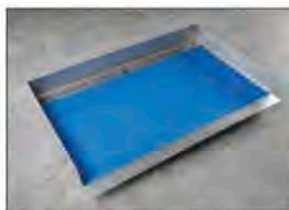
2020 AIA-NJ President-Elect; Managing Partner, JZA+D



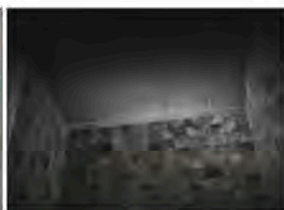
1 MTI Baths



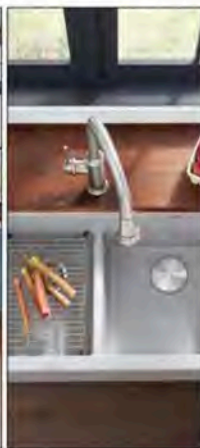
2 Franz Viegener



3 Infinity Drain



4 BLANCO



Restroom Products/Plumbing Equipment

1 CLASSIC BATH

Curved to cradle the body for maximum comfort, creating a spa-like bath experience, the Mallory tub is 75% organic natural stone combined with high-performance resins. The double slipper bath features soft curves, gently rolled rim and minimalist lines, while high insulating properties keep bath water warm longer. Non-porous and resistant to stain, mold, and mildew, the tub's glossy finish is simple to clean and maintain.

JUDGE'S COMMENT: "Clean lines, beauty and function and waste reduction in the manufacturing process makes this an appealing product."

MTI Baths
Mallory
www.mtibaths.com

CIRCLE 212

2 MINIMALIST FAUCET

Featuring an ultra-slim profile of just 7-mm thick, Franz Viegener's Seven is a sleek, minimalist faucet. With its curvilinear contours, the faucet is available in a number of finishes, including polished chrome, polished and brushed nickel, polished and brushed gold, polished rose gold, satin black and polished and brushed unlacquered brass.

JUDGE'S COMMENT: "Style and the ability to conserve water is a winning combination."

Franz Viegener
Seven
www.franzviegener.com

CIRCLE 213

3 EASY INSTALLATION

With a life-time guarantee, the Infinity Drain is a waterproof stainless steel shower base. The modular, ready to tile, pre-sloped base comes ready to install with no need for additional waterproofing. The shower base can be curbed or curbless and can be used with any grate style or tile insert. In the event that a leak develops, Infinity Drain will cover the cost of labor, removal, replacement and full restoration.

JUDGE'S COMMENT: "The easy install aspect dovetails well with trends in modularity to speed construction, and a life-time guarantee pretty much says it all about performance."

Infinity Drain

Infinity Drain Stainless Steel Shower Base
www.infinitydrain.com

CIRCLE 214

4 IN-DEPTH DESIGN

With its apron front and low divide sitting just 5.5 in. from the sink bottom, the sink offers enhanced ergonomics. Because apron front designs are installed further forward and eliminate the countertop, they minimize the need for people to lean over, reducing strain. The granite composite material is available in eight colors.

JUDGE'S COMMENT: "I like the new material, color options and ergonomic aspects of the apron—it certainly improves aesthetic aspects."

BLANCO
IKON 33-in. 1.75 Apron Front Sink
www.blanco.com

CIRCLE 215