

Plumber™

A PROBLEM FIXER

Queens plumbing company adapts over 60 years in operation to continue to be a dependable service company for customers [Page 12](#)

▲ On The Road
MINNESOTA ICON DOES ALL
THE MARKETING FOR
PLUMBING COMPANY
[Page 20](#)

▲ In The Shop
BOX TRUCKS OFFER ABILITY
TO HAUL BIGGER EQUIPMENT,
AND MORE
[Page 24](#)

Residential Plumbing

By Craig Mandli

Bath Tub

MTI Baths Cássandra

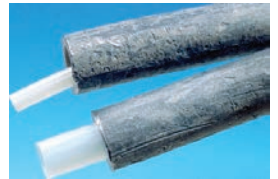
The Cássandra from MTI Baths is an oval freestanding tub with an asymmetrical design that features a wider tub deck on one side for resting or turning into it. It is available in white or biscuit; soft matte or hand-polished deep gloss finish, and is offered as a soaker or air bath. Measuring a generous 72 by 38 by 22 inches, it is constructed using a SculptureStone material that is 70% organic natural stone combined with high-performance resins. This molded stone is solid throughout with high insulating properties to keep bath water warm longer for extended soaks. The tubs are non-porous and resistant to stain, mold and mildew, and easy to clean and maintain. **800-783-8827; www.mtibaths.com**



Coatings/Linings/Sealants

Flow-Liner Systems Neofit+

Neofit+ from Flow-Liner Systems is an environmentally friendly pipe lining system that helps maintain the life expectancy of the existing service pipe. Designed for 1/2- to 2-inch diameters and up to 300-foot sections, it is made from a strong and durable virgin polyethylene terephthalate. The NSF 61-approved liner has two main uses: to keep drinking water pure and out of contact with the host pipe, such as lead or copper, and to rehabilitate pipes by sealing pinholes, cracks and small defects. It is a trenchless technology, thus its installation procedure avoids the risk of damage to other services since there is no disturbance of the ground around the pipe, also eliminating both the possibility of ground contamination and harm to existing plant and animal life. This no-dig, non-invasive system also preserves the property owner's above-ground structures, and can be installed in just a couple of hours. **800-348-0020; www.flow-liner.com**



Boiler

Bosch Thermotechnology Greenstar

The Greenstar boiler from Bosch Thermotechnology offers reliable, ultra-quiet operation, fast, easy installation and very low maintenance costs. The intelligent digital control systems allow for precise boiler control using indoor and/or outdoor temperature sensing, as well as options for controlling domestic hot water. The largest model provides ideal comfort for almost any home and can run two standard showers simultaneously. It includes a highly efficient 95% AFUE aluminum silicon heat exchanger, which makes the boiler eligible for savings up to 75% in federal, state and local credits. **800-283-3787; www.boschheatingandcooling.com**



Oatey Megaloc Thread Sealant

Megaloc Thread Sealant from Oatey has Dupont Kevlar in its formula. It can be used on steel, stainless steel, brass, copper, aluminum and plastics. The sealant wipes clean from hands and tools with just a dry rag and washes out of clothing too. It is grit-free and does not contain PTFE. It sets soft; no cure time required; never hardens, cracks or becomes brittle. Its no-odor, nonseparating, nonflammable and nonhazardous formula provides leak-proof hydraulic resistance up to 12,000 psi. Certified to ANSI/NSF Standard 61, it withstands gas pressure to 26,000 psi and performs over a temperature range of negative 58 to 752 degrees F (on steel pipe). **800-203-1155; www.oatey.com**



Drains

Dallas Specialty Dal-Drains DD2T

The square-top Dal-Drains DD2T drain from Dallas Specialty is gasketed and connects to cast iron pipe for remodeling old showers and connects to PVC or ABS pipe for old or new work. A mortar drain device protects the weep holes from mortar clog. Available 24-, 36- and 48-inch widths, stainless steel linear drains connect to Dal-Drains with a 2-inch throat or any other existing drain with a 2-inch thread. A 40 Mil Perma-Gard PVC Shower pan liner is also available. 800-222-5644; www.dallasspecialty.com



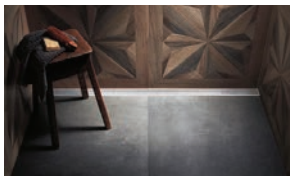
Easy Sanitary Solutions Easy Drain Modulo Stone

The Easy Drain Modulo Stone from Easy Sanitary Solutions is a frameless shower drain with tileable grate that is developed for natural stone floors of any thickness. The frameless design makes it completely invisible and fits harmoniously into any bathroom floor. It is equipped with a tile adjustable frame and water protection system. The TAF system has been developed to simplify installation by eliminating guesswork and ensuring maximum security with secondary water drainage. The WPS system consists of a preassembled sealing membrane that prevents leaking as a result of faulty installation due to unfavorable conditions. 347-293 0887; www.easydrainusa.com



Infinity Drain Universal Infinity Drain

The Universal Infinity Drain linear drain from Infinity Drain is compatible with most types of waterproofing methods. The convenient universal kit features a pitched channel with a clamping collar and the choice of a tile insert frame or squares pattern grate. Designed to adhere to both traditional and modern waterproofing techniques, the drain's channel allows traditional membranes like vinyl or Chloraloy to be mechanically fastened to the drain channel. Alternatively, modern installation methods that incor-



porate a bonded waterproofing method like liquid membrane or fabric sheet will adhere to the 1-inch channel flange. It is available in squares/satin stainless steel or polished stainless steel finishes, in 24-, 30-, 32-, 42-, 48-, 54- and 60-inch lengths. 516-767-6786; www.infinitydrain.com

Faucet

PRIER Products CoolTemp (P-114)

The CoolTemp (P-114) from PRIER Products offers the same level of quality components, distinguishable design and performance as the TrueTemp (P-118) in a cold-water version. It is available in an oil-rubbed bronze or satin nickel finish to match surrounding home decor. The design has an ergonomic, rubber grip handle for easy operation. Each hydrant is freeze-proof, with a self-draining, anti-siphon vacuum breaker and backflow check valve. It is ASSE code approved. 800-362-9055; www.prier.com



Fittings

BrassCraft KT Series 1/4 Turn Ball Stop

The BrassCraft KT Series 1/4 Turn Ball Stop has a precision-machined brass ball mated with PTFE seats for smooth operation without freeze-ups, even after long periods of non-use. The blowout-proof stem is assembled from inside with high-performance O-rings designed to withstand high temperatures and corrosion. Its machined one-piece brass body provides strength and durability, while its plated stem provides corrosion resistance. A plated metal handle is designed for durability and a sleek appearance. It is 100% leak tested, meets low-lead requirements, and is available in compression, sweat, CPVC and PEX. 877-272-7755; www.brasscraft.com

