

kit**chen** & **bath** DESIGN NEWS[®]

The leading business, design and product resource for the kitchen & bath trade



SHOWROOMS • 40

INSPIRED SPACES

OUTDOOR KITCHENS • 34

Beyond the Walls

PRODUCT TREND REPORT • 44

Stylish Lavs

**+ DIRECTORY &
BUYERS' GUIDE**

Beauty & Brawn

Bathroom sink and faucet trends couple creative and fun design options with high-performing, functional elements.

BY ELIZABETH RICHARDS

In addition to their primary hygienic function, bathrooms can serve as a personal refuge for relaxation or a space to showcase personal style for guests. Since performance and beauty can easily be blended in today's luxury bath sinks and faucets, trends are moving toward customized styles and colors that truly highlight the homeowner's style.

"Bathrooms are increasingly being seen as a space to reflect the style and personality of their owner, with inventive use of color serving as a key tool," says Alexandra Yacavone, Kohler Design Studio Manager for Kohler, based in Kohler, WI. "Colored bathroom suites are growing in popularity."

"The biggest trends we are seeing are towards color and whimsy," concurs Dawn Robinson, director of marketing and communications for BOCCHI USA, based in Alpharetta, GA. "During the pandemic, and following it, so many homeowners began to look at their homes in a new way and with a new focus on comfort, customization and fun as well as function. This is presented in a lot of ways, but with the bathroom in particular there is a move towards fun spaces that reflect more personality than we've seen in the past."

Though visuals vary widely, function cannot be compromised for style, Robinson adds. "Whatever the 'fun' is, it still needs to be highly functional – easy to clean, more hygienic, etc. This is not the age of either/or, it is an age where we want it all and frankly deserve to have products that are as functional as they are stylish, that are as hygienic



American Standard's Studio S Wide-spread Bath Faucet showcases a sleek geometric design with soft edges. The two-handle faucet includes lever handles for a drip-free performance, notes the firm, and is WaterSense certified for water savings.
americanstandard-us.com



Handcrafted in Italy, the Artisan Ceramic Collection from VOLA, available from **Hastings Tile & Bath**, includes ceramic vessel, wall-hung and pedestal sinks that feature patterns and marble veining that is hand applied before it is baked and glazed. Four new marble-look finishes are available.
hastingsstilebath.com



Sonoma Forge has added a matte black finish to its WaterBridge Wall-Mount Lav faucet with Waterfall Spout. The collection emulates raw materials, such as copper tees, elbows and pipe, with a spout resembling split bamboo. Finishes include rustic nickel, rustic copper, satin nickel and oil rubbed bronze.
sonomaforge.com



From **Acquabella** comes two totem sinks with cylindrical silhouettes. The Venet totem features a round basin with sloping sides and a sculpted base that widens slightly near the bottom, while Vars has a rounded square basin and compact lines. Both are made of Dolotek mineral composite.
acquabella.com

as they are eco-friendly, that are easy to use and made with sustainable practices," she stresses.

Bath sinks and faucets can set the tone for a space, serving as a centerpiece or focal point, with coordinated accessories and complementary colors throughout. Technological advances help create higher functionality, convenience and durability in products. So say manufacturers recently surveyed by *Kitchen & Bath Design News*.

A LOOK OF THEIR OWN

Custom looks have long been important in the luxury sink and faucet market, a trend that continues to rise. "With consumers continuing to spend much of their time at home, customizable products that allow homeowners to showcase their style are a popular trend in the bathroom space," reports Justin Storm, group product manager at Irvine, CA-based House of Rohl.

"In fact, a House of Rohl survey from last summer found that 63% of respondents are more likely to select bathroom fixtures if they can personalize them, whether that's through faucet handles, materials or product colors," he adds.

Diego Zanatta, business development manager for Fantini, based in Pella, Italy and New York, NY, says the tendency to use custom-made sinks has always been true for their market segment. "In the past year



Newport Brass has expanded its portfolio with the addition of three industrial-style lav collections, each incorporating textural elements. Shown is Clemens, which showcases knurling, intricate cross-hatched lines rolled into the brass for tactile appeal. Clemens is available with lever or cross handles. newportbrass.com



Made in Italy, the basins collection from **Simas** includes the Agile, Folio, Sharp and Wave fixtures, encompassing rounded, oval, squared and rectangular shapes for wall-hung or countertop installation. Thirteen colors are available. simasusa.com



Riobel, a House of Rohl brand, introduces the Ode collection. The balance of profile, proportion and performance defines the collection – the geometric meeting of the round base and rectangular spout is calculated to equal measurements for a modernist art look, notes the company. houseofrohl.com



The New Classic by Marcel Wanders Studio for **Laufen** combines the opulence of past eras with modern day practicality and contemporary style, notes the company. The complete bath collection features pure white ceramic pieces that combine with furniture, mirrors and accessories. us.laufen.com



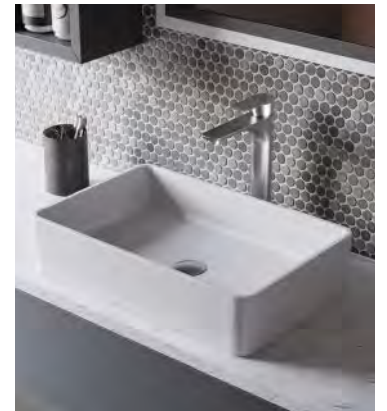
D-Neo represents **Duravit's** approach to the entry-level market. The washbasins, vanities and handrinse basins all feature a surrounding edge with linear and geometric design. The basins include an all-round trim, while the above-counter basins feature round or oval designs. duravit.us



The latest addition to the European-inspired E collection from **California Faucets**, the Libretto single-lever faucet delivers a clean and minimal look with a twist – a distinctive rectangular spout that delivers water in a vertical sheet. The single-hole faucet is available in two sizes and 28-plus artisan finishes. calfaucets.com



ALT has added to its portfolio with the inclusion of 1840, a bath faucet collection that combines a classic industrial vibe with modern features. Each faucet comes with a choice of round or lever industrial-style handles. alt-aqua.com



Karran USA's new Quattro Matte line features eight elegantly formed vessel bath sinks, with each sink crafted from pure white, 100% acrylic solid surface. Designed to mount above the countertop, the bowls can be paired with one of the company's new bath faucets for a complete look. karran.com

we have seen an increase in requests for solutions to install the product on thicker surfaces, as required when marble is used. More and more companies are now offering freestanding solutions that have an impact on the choice for the faucets that will need to be wall, floor or even ceiling mounted,” he states. “As for faucets, I noticed a return of the industrial aesthetic but with more elegant lines than in the past, when purely industrial designs were in style. More balanced designs that combine industrial elements/finishes with modern lines allow for more flexibility and work well in both contemporary and traditional bathrooms.”

“I’d say that, because we are a small bespoke brand, people work with us because they want to differentiate their projects; our ability to customize finishes and mix-and-match handles provides almost limitless possibilities. We are able to double-machine and double-plate different designs or patterns onto the faucets, which is something larger manufacturers cannot do,” emphasizes Avi Abel, president, Watermark Designs, based in Brooklyn, NY.

“Sizes run the gamut as that can change from en suites to powder rooms, etc., but our most in-demand products are the ones that allow homeowners and designers to install them in several ways, so that they can really customize the sink to their space,” stresses Robinson.

Eric Phelps, president – North America for Acquabella, based in Jasper, GA, says that there’s demand for broader design options, sizes

and custom capabilities. Large, single-bowl sinks that can be used by two people at the same time are popular, he adds.

Kiran Singh, senior brand manager for Indianapolis, IN-based Peerless says single-handle lavatory faucets are gaining in popularity, as is an overall move towards minimalism. “Minimalist design aesthetics are on the rise and will continue to stay on trend due to their ability to [make] any room look spacious while giving a timeless look to your space,” she reports.

CREATIVE FINISH

The role of the bathroom spans a wide range, from showpiece, to personal refuge, to functional space for hygiene. Each may call for a different design style, but a common thread among them is creativity in design.

“Design-forward spaces are employing natural organic finishes that provide dramatic accents to a space,” notes San Luis Obispo, CA-based Native Trails’ CEO and Founder Naomi Neilson. “Natural materials in sinks are in high demand. We are seeing this with our hand-worked metals like copper, nickel, silver, and even gold and platinum – and materials such as smooth concrete, whose organic modern appeal offers a great deal of versatility.”

Yacavone agrees that nature as a theme is a rising trend. “With nature being shown to offer a feeling of calm and improve both mental



Lavatories have joined the Brazn line from **Kohler**. Minimalist with a softer approach, the collection features clean, dramatic lines and angles combined with textured, organic surfaces. The collection includes three rectangle vessels and three undermount lavs. All are available in White, with the rectangular vessels also offered in Honed Black. us.kohler.com



Expanding on the popular Trinsic Bath Collection, **Delta Faucet** has added a wheel handle option for an industrial aesthetic. Inspired by the sleek look of modern European design, the Trinsic Collection with wheel handle is available in chrome, champagne bronze, Venetian bronze, Brilliance stainless and matte black finishes. deltafaucet.com



Gessi has reimagined 1920's style for its Venti20 Collection, which showcases elegant lines and meticulous detailing. Spanish designer-artist Lázaro Rosa-Violán was the collaborator for this eclectic line. Detailed handles, fluted bodies and reflective cuts all combine in a single silhouette that delivers an industrial vibe. gessi.com



Barclay Products delivers a contemporary style with its Kana 15" stainless steel above-counter vessel sink. Made from 316-grade stainless steel, the sink is available in two finishes - matte black and brushed. barclayproducts.com



A gentle organic curve and swivel spout enhance the look of the Widespread M-Size Bath Faucet from **Grohe**. Featuring the company's SilkMove handle operation and durable StarLight finish, the Essence faucet embodies all the elements of precision German craftsmanship, notes the firm. grohe.us



Bates & Bates by **Alno, Inc.** features the Dauphin lavatory basin as part of its sculptured metal sink line. Each sink is handcrafted from heavy-gauge solid brass and finished in one of 16 custom metal finishes. The sink features outer dimensions of 12"x17-1/2"x6-1/4". The sink shown highlights the antique brass finish. alnoinc.com



The Undermount Incline Sink from **MTI Baths** is a rectangular basin that is notable for its sharply sloped bottom that runs from the front to an integrated slotted drain along the back of the sink bottom. Handcrafted of solid SculptureStone for a molded stone look, the sink allows for bespoke width sizing and is offered with 13" or 15" bowl depth. mtibaths.com



A slim floor-standing, single-hole tub filler is the latest addition to the Cigno faucet collection from **Lacava**. The fitting features a curved lever handle, two-way diverter, curving swivel spout and hand-held shower, and is available in a range of finishes, including polished chrome, polished nickel, brushed nickel, brushed gold and matte black. lacava.com

and physical health, particularly as an antidote to tech-driven lifestyles, consumers are increasingly using it as a tool to boost wellbeing. Organic elements can bring this emotional connection with nature into bathrooms," she observes. "Designs tap into the soothing experience of being in nature, with organic forms that evoke a connection to the material's source."

Trough-shaped sinks are in high demand, Neilson says, for both the super functional basin and the intriguing look. "Unique and interesting vessels are also enjoying increased popularity. The artistic vessel sink will never go out of style, as it's a great way to really personalize a space with a memorable piece in a highly visible bathroom."

A sterile, neutral environment is no longer the desired impact, manufacturers say. "Impersonal, all-white bathrooms [are] quickly falling out of favor. Decorative walls offer a fast track to a statement space," says Yacovone. "While bathrooms have conventionally been uplifting spaces filled with smooth, shiny white surfaces, designers are now daring to dip into a dark, tactile palette to create emotive and therapeutic spaces."

Details that wouldn't look out of place in the rest of the home are making their way to the bath, she adds, such as rounded shapes, decorative detail and warm colors in bathroom furniture. Finishes are also shifting, she adds. "Whereas decorative finishes were previously the conserve of select made-to-order offerings, brands are now embracing an expressive

palette of rich metals and tactile finishes that elevate the ceremony of bathing," she explains.

Consumers and designers are veering from the traditional finishes more and more often. "In general, people experiment more and leave the chrome/satin finishes with much more ease than before – so much so that now special finishes account for probably half of our sales," Zanatta says.

With the range of finishes available, there's a choice appropriate for any space. Abel says they are seeing the return of both brass and gold finishes, which offer a beautiful shine. "For spaces that need something more natural, our Aged Brass – which is a living finish – or Satin finishes are quite popular again. For a more dramatic statement, dual finishes, such as Matte Black/Gold or Matte White/Gold, are popular with designers," he reports.

Robinson says matte finishes are the most popular currently. "In both light and dark tones, and bright fun colors, the matte finishes are king. They add a softness and luxuriousness to a product that is very much in demand."

Singh thinks that the matte black finish has been rising quickly due to the timeless color that makes a space look modern. Chrome is also a popular, classic choice, she adds, which adds a perfect touch of light while bringing a clean feel to any room. "Simple, clean, yet modern are what consumers are looking for in their homes," she stresses.



The **DXV** Modulus 36" Concrete Bathroom Sink sports a sharp, urban contemporary design with a penchant for modernism, notes the firm. With an experimental material and balanced silhouette, the concrete sink provides a custom look and is compatible with several furniture options, adds the company. dxv.com



A new line of Wallmount Tub Fillers from **Moen** features a simplistic, single-handle design and sleek, ultra-thin 10" spout. The faucets are available in 12 suite-matching styles and a variety of finishes, including chrome, Lifeshine brushed nickel, Lifeshine brushed gold, polished nickel, oil rubbed bronze and matte black. moen.com



antoniolupi has added four new colors to its Cristalmood_021 bath sink collection. Developed by Andrea Lupi and Gumdesign, the colors take their inspiration from the landscapes of Tuscany. Mostato is a deep red; Barrique recalls the shades of autumn; Notturmo is a deep blue, and Vespero radiates tones of orange. antoniolupi.it/en/



Characterized by a graceful, gently curving spout, the Standard R Touchless Faucet features **TOTO's** proprietary EWATER+ technology. The smart-sensor faucet automatically mists the lavatory with electrolyzed water, which eliminates the need for harsh cleaning chemicals and reduces dirt and grime, notes the firm. totousa.com



Sailing, a bath fittings collection from **Fantini**, is the company's first North American collaboration, created in concert with the design firm Yabu Pushelberg. The faucet's subtly horn-shaped faucet handles and sleek spout are a reinterpretation of the classic form of boat cleats. The design undercurrents emphasize water, the spirit of the company. fantini.it/en-us



Stone Forest brings the natural beauty of stone into the bathroom with its carved Contour Vessel Sinks. Available in round, square and rectangular shapes, the geometric fixtures are sculpted from solid blocks of honed Antique Gray Limestone and Italian Carrara marble. Each sink has a slotted stone drain cover. stoneforest.com



Inspired by nature, the **Aquatica** Lotus Vessel Sink features a distinctive organic oval shape. Made in the EU using in-house-developed AquateX solid-surface technology, the sink is durable, easy to clean, UV-resistant, hypoallergenic, non-toxic and 100% recyclable, notes the firm. It is available in white matte, black and an exterior in any RAL shade. aquaticausa.com



Jacuzzi Luxury Bath's Karina free-standing tub filler features a patent-pending waterfall style spout design. Made from solid brass, the fitting includes a hand shower designed for longer reach and extended coverage. It is available in brushed bronze, brushed nickel, matte black and polished chrome finishes. jacuzzi.com

SPACE SHAPERS

Sinks and faucets in the bathroom – whether a powder room, guest bath or master bath – can help define the space in both function and design, manufacturers say.

"It's common for homeowners to select their sinks and faucets early on in their bathroom design process, and oftentimes the rest of the space is shaped by the finish and style of these products," remarks Storm. "For example, if a polished chrome faucet is selected, it's likely that the bathroom hardware, such as towel bars, drawer pulls and other accessories, will also be polished chrome. If a bold-colored sink is selected, the rest of the bathroom may be designed with complementary colors in mind."

Zanatta states faucets are generally selected based on the size and type of vanity that they desire in their bathroom, which then guides the overall design for the shower and tub fixtures. "The selected collection often ends up influencing some important elements in the bathroom, like the type of tub, the selection for the accessories and even the hardware finishes – such as hinges and doors," he says.

"Bathroom faucets are not only an essential part of any home remodel but also a statement element for the overall bath design," Singh notes. "A new faucet has the ability to immediately revamp the look and feel of your bath and transform it into the ideal space. Whether you're going for a

modern or traditional vibe, a bathroom faucet can achieve that goal based on the faucet design or finish."

The relationship between sinks/faucets and the overall appearance of the bathroom varies depending on which bath they're in and consumer preference. For some, function and understatement is more important, while others are looking to make a statement.

Phelps says, "In today's design, the sink contributes most by offering significant function in well-balanced and blended design, a daily workspace that doesn't require the spotlight."

Other manufacturers say that sinks and faucets have shifted from being all about how they work to becoming aesthetic highlights. "In the past, sinks were more utilitarian; they filled a space, provided a function and quite often blended into the design of a bathroom," Neilson observes. "Fortunately, today there are myriad available sink options allowing that piece to become the focal point of the bathroom. They add that personal element and a beautiful differentiator to that space."

SMOOTH OPERATION

It isn't enough to simply look good; consumers are demanding products that cater to a long list of functional considerations, as well. In addition to ensuring that each bathroom has an aesthetic that appeals to the specific customer, designers must also give attention to cleanliness, durability,



The Flute Single-Handle Lavatory Faucet by **Peerless** offers a simplistic, cylindrical design with a smooth curve spout and sleek handle for a modern look. Available in three different finishes – matte black, brushed nickel and chrome – the faucet comes with two spout height options.
peerlessfaucet.com



Ramus Bath Faucets from **Kraus** convey a high-end, modern look with clean lines and cylindrical geometry. Available in both vessel and basin models, the faucets are offered in a wide selection of finishes, including spot-free options that resist water spots and fingerprints, notes the company.
kraususa.com



Nantucket Sinks has added to its Victorian Collection with the introduction of 48"-wide Retro-style double-bowl wall mount sinks. Handmade in the south of Italy from premium fireclay, the sinks are available with a white-on-white configuration as well as white-on-matte black configuration.
nantucketsinksusa.com



Inspired by the Golden Age of Hollywood, **Graff's** Lauren Collection features elegant silhouettes that echo the sweep of designer gowns worn by leading ladies of the era. A 24K gold-plated or polished chrome finish presents an opulent look, while an olive bronze finish brings a more natural feel.
graff-designs.com



Hygienic, durable and sustainable, the new Touchfree faucets from **Dornbracht** run water only when needed, conserving resources. The simple and flexible plug-and-play installation and technology is available in six design series with various polished and matte finish options.
dornbracht.com



Handcrafted in Santa Clara del Cobre, Mexico, using techniques mastered through generations, the Altamira Green vessel sinks feature unwavering attention to detail, notes **Thompson Traders**. The half pearls adorning the sink provide a juxtaposition to the deep yet transparent, hand-lacquered green finish.
thompsontraders.com



Silestone's Evita Bathroom Sink Collection is fashioned from a single piece of Silestone quartz for a seamless look. Available from **Cosentino**, the collection is made with Silestone's new environmentally friendly HybriQ+ technology and is offered in three Silestone colors – White Zeus, Eternal Statuario and Eternal Desert Silver.
cosentino.com



Inspired by the Sicilian seaside village, the Taormina series by **Ritmonio** includes bath faucet and tub faucets with or without lever handle. The body of the faucet evokes the shape of the columns of the Ancient Theater of Taormina, and its gentle lines reflect the sea, notes the firm. The water-saving fittings are offered in six finishes.
ritmonio.it

aging in place, environmental sustainability and other functional elements. All of these factors can impact the materials or finishes chosen.

“For sinks, volcanic limestone and porcelain materials are often the go-to choice for consumers because they’re easy to clean, come in many shapes and sizes, and stand up to wear and tear,” explains Storm. For faucets, he adds, brass is popular in the bath due to its durability.

Phelps reports that engineered stone and solid surface materials are increasing in popularity as well. “The silky feel, cleanability and range of design capabilities offers a unique set of benefits,” he remarks.

Another durable faucet option on the rise is PVD, Zanatta says. “Customers have become more used to it and, despite the higher price point, they understand the value of having a more durable finish,” he notes.

“After a few years, we are noticing an increased demand for unlacquered brass, even in traditionally more modern markets,” he adds. “We now offer a PVD version, which clients appreciate because of the durability and hygiene properties.”

Hygiene is another important consideration, manufacturers say. “Throughout the home in general, products that cater to the hygiene-conscious homeowner are important, as they look to reduce germs and cross contamination,” says Storm. “Motion-activated or hands-free faucets are becoming more prominent, in addition to sinks and faucets made with easy-to-clean and bacteria-resistant materials.”

“Certainly, the demand for touch-free faucets and complementary items has increased,” reports Zanatta. He’s also noticed increased interest in multi-functional showerheads, both for renovations and new developments.

Universal design and sustainability are additional functional requirements that more consumers are becoming attentive to, manufacturers say.

“Brands are catering to varying life stages and physical abilities for improved functionality,” stresses Yacavone. “They are leaning into technology to be more inclusive, as well as a tool for aging in place.”

Abel agrees. “Like most faucet manufacturers, we have to keep abreast of any changes in ADA-compliance, or water-flow rates, and we adjust accordingly. We do know that the aging-in-place demographic continues to grow and, with that, some faucets with lever handles can meet the regulations.”

“We are seeing dramatic growth in demand for products with a positive story behind them that people can relate to, and for products made sustainably that people can feel good about,” adds Neilson. “Beauty combined with sustainability are definite drivers.”

CHANGING TECHNOLOGIES

For sinks and faucets, technology advances mean not only the smart technologies that permeate the home, but advances in manufacturing processes and operation as well.

Photo: Pierre-Luc Dufour



Wetstyle has unveiled its new Bauhaus collection, inspired by the movement in Tel Aviv's White City. Featuring clean lines and rounded corners, the line includes vanities and countertop sinks custom fit to the collection. The basins are crafted from the company's Wetmar BiO, an eco-friendly material that uses soy and mineral stone. wetstyle.com



Nasoni produces the first patented fountain faucet that turns a traditional spout into an arc of pure, clean water with a flip of a lever. The fountain faucet provides ease of use for getting a drink of water, rinsing after brushing teeth, removing facial cleanser, rinsing shaving cream and more. nasoni.com



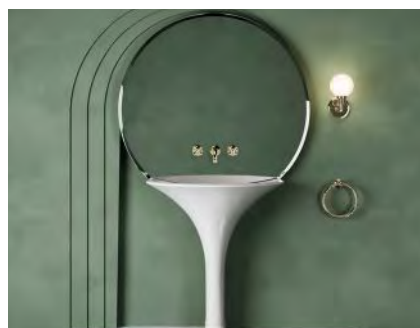
NativeStone products from **Native Trails** are now available in Charcoal, a rich matte black finish. The newest color joins the line's Ash, Earth, Pearl and Slate finishes, with each delivering a silky smooth, eco-friendly concrete surface to sinks and tubs. Each piece is artisan made from a sustainable blend of natural fiber and cement. nativetrailshome.com



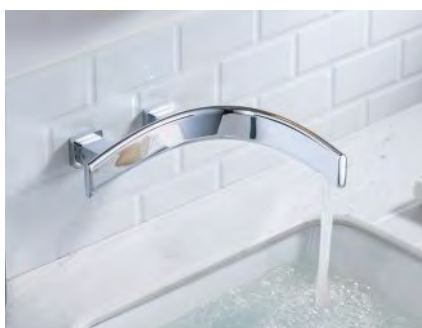
Premier Copper Products offers distinctive bathroom sinks in a wide variety of shapes, styles and finishes, all fashioned out of hammered copper. The sinks are handcrafted, making each piece a one-of-a-kind. premiercopperproducts.com



ROHL, a House of Rohl brand, has launched its new Apothecary collection, inspired by the angular shapes of bottles in apothecary shops. Handles with squared-off lines, beveled edges and chamfered corners are balanced by the arc of the bath faucet for a classic look. houseofrohl.com



Created in collaboration with Massimo Iosa Ghini, **Devon&Devon** offers Kalos, a washbasin based on the concept of the soft and sinuous lines of flower petals. The Kalos body is made entirely of White Tec that delivers impact and mark resistance. A large, circular mirror hangs naturally over the basin. devon-devon.com



Isenberg's the Curve highlights sleek lines and an arched spout that extends away from the wall as it stretches over the sink. Water streams through the curved linear spout to deliver a waterfall effect. The Curve comes with hands-free sensors or deck-mounted handles. In addition to traditional finishes, 20 ceramic-based colors are offered. isenbergfaucets.com



Inviting curves and elegant simplicity are the hallmark of Allaria, a new bath faucet collection from **Brizo Kitchen and Bath Company**. The suite of products includes this widespread lavatory faucet with square spout and knob handles in Brilliance black onyx/matte black. brizo.com

"Sealer technology is advancing dramatically, allowing for specialty sink finishes that previously would have been unthinkable for a sink surface," Neilson remarks.

Both faucet technology and the likelihood that consumers will incorporate that technology has advanced greatly, Singh reports. "Overall, bath and kitchen faucet technologies have and will continue to change the industry as they proceed to deliver convenience and efficiency throughout [the] homeowner's everyday life," she says.

"For us at BOCCHI, [technological advances come] in our manufacturing processes that allow us to take a centuries-old material like fireclay and create products using newer methods that are more sustainable, have unique shapes and sizes, and are modernized for today's consumer," reports Robinson. "It also plays a part in our glazing process that has allowed us to achieve a non-porous product that is stain resistant, heat resistant up to 2000° F, and even gives the option of a metallic finish to create a product that has both the strength of metal and the warmth of fireclay," she notes.

"Technology ordinarily found in other parts of the home is seeping into the bathroom," Yacavone says. "The expansion of the smart home into these spaces – particularly through the integration of voice control – makes it easier for consumers to multitask and creates a seamless transition between different areas." ■



Gerber Plumbing has added floor-mount tub fillers to its offerings. Available in Contemporary, Square and Traditional, the fillers include a single-function, WaterSense-certified hand shower. The fittings are available in chrome, brushed nickel and satin black, and the Contemporary and Square are also offered in brushed bronze PVD finish. gerber-us.com



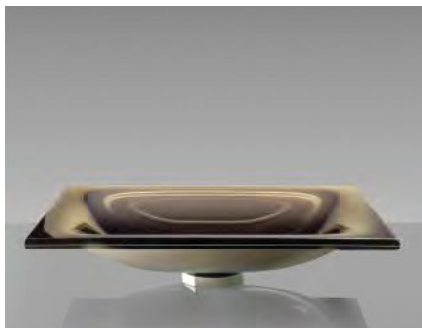
The wall-mount tub filler from the 5mm collection from **Treemme** gets its name from the fact that the thickness of the faucet – 5mm – is constant in all the elements that compose it, from the spout to the levers. The faucet is fashioned from stainless steel. treemmeusa.com



Two spray modes and a pull-out spout enhance the functionality of **Hansgrohe's** Finoris bath faucet, with the push of a button changing the water flow from PowderRain spray to laminar spray. The pull-out spray head features a radius of 20" and retracts back to its original position. Three different heights and multiple finishes are available. hansgrohe-usa.com



BOCCHI's Etna vessel sink showcases a triangular shape reminiscent of an artist's palette, notes the company. Made of fireclay, the sink is available in 12 designer colors with a color-matched drain cover, as well as two metallic finishes – platinum or matte gold. They are stain and scratch resistant and heat proof, adds the firm. bocchiusa.com



Vitraform's rectangular, freestanding sink is made using a proprietary double-layer lamination process that makes it durable and resilient, says the firm. The angular design enables it to fit into narrow spaces, the company adds. The sink is available in 12 glass colors, seven finishes, 10 gold options and 10 metal finishes. vitraform.com



Drummonds showcases the Bibury collection of freestanding bath, shower controls and a range of taps and mixers designed in collaboration with industrial designer Marc Newson. The handmade pieces are inspired by vintage industrial bath fittings. Taking a cue from historic Soviet spigots, the taps and mixers feature wheel handles. drummonds-uk.com



Three years in development, Argonaut is the first bath collection offered by **Waterstone Faucets**. The grouping includes 18 fittings with patented designs inspired by the company's naval roots, with textured diamond knurling, mono-spoke forms and steam-punk-inspired detailing. The faucets are made from solid brass. waterstoneco.com



The coco blu•stone counter-top basin is fashioned from **Blu Bathworks'** signature eco-friendly blu•stone material and offered in a matte white finish. Comprised of 80% quartzite stone and 20% Biobased resin obtained from corn, the material is Green Guard certified by LEED. blubathworks.com



Pioneer Industries' Central Brass has introduced a Cast Brass lavatory faucet, a single sculpted piece constructed entirely from heavy cast brass for durability. The ADA-compliant faucet features a single-lever metal handle in two styles, meets WaterSense and CALGreen criteria and is offered in polished chrome. pioneerindustries.com



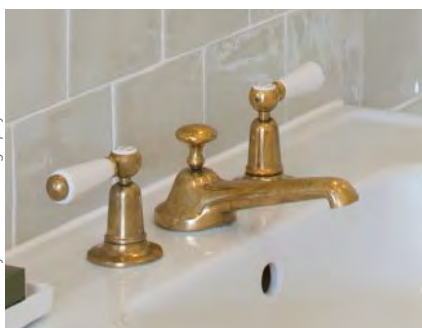
From **Speakman** comes the Lura Collection, designed with Clodagh Design. Reflecting her minimalist design principles, the faucets feature a sleek spout paired with three different handle styles – one cross handle and two lever options. Finishes include polished chrome, brushed bronze and matte black. speakman.com



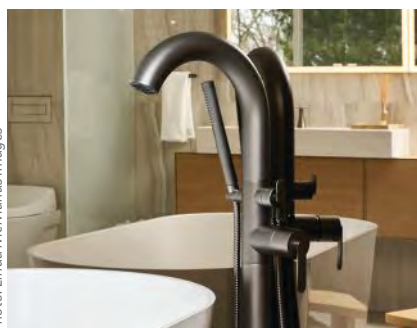
Watermark Designs has teamed up with architect and designer Barry Goralnick to create the James Collection, a faucet line that elevates the industrial look with a level of luxury. Handcrafted in Brooklyn, NY from solid brass, the line includes a lever handle option and a gear-like knob, available in 31 finishes as well as split finishes. watermark-designs.com



Pfister's Verve allows users to mix and match handle finishes for customization. The faucet features a soft flare profile and minimal curves, and its Bauhaus design has a touch of transitional elements. Cross handles, straight levers and T-handles are available in polished chrome, polished nickel, matte black and brushed gold. pfisterfaucets.com



The Regent China Lever 6455, an 1890's style with a 1900's shield, is a traditional faucet from **Barber Wilsons & Co.** The deck-mounted solid brass faucet is available in the company's standard finishes, while the indices are available in white, natural or black ceramic, as well as matching metal finish. barberwilsons.com



Franz Viegenger's Konic tub filler, available as a wall-, deck- or floor-mounted fitting, is now offered in a new PVD Satin Grey-stone finish. The silky charcoal complements the mix of linear and curved features, notes the firm. The Physical Vapor Deposition makes the finish with scratch resistant and fingerprint proof, notes the firm. franzviegenger.com

Photo: Amy Murrell Photography

Photo: Linda McManus Images