

# Building Savvy

Dallas • Fort Worth | Vol Vol XXII-V

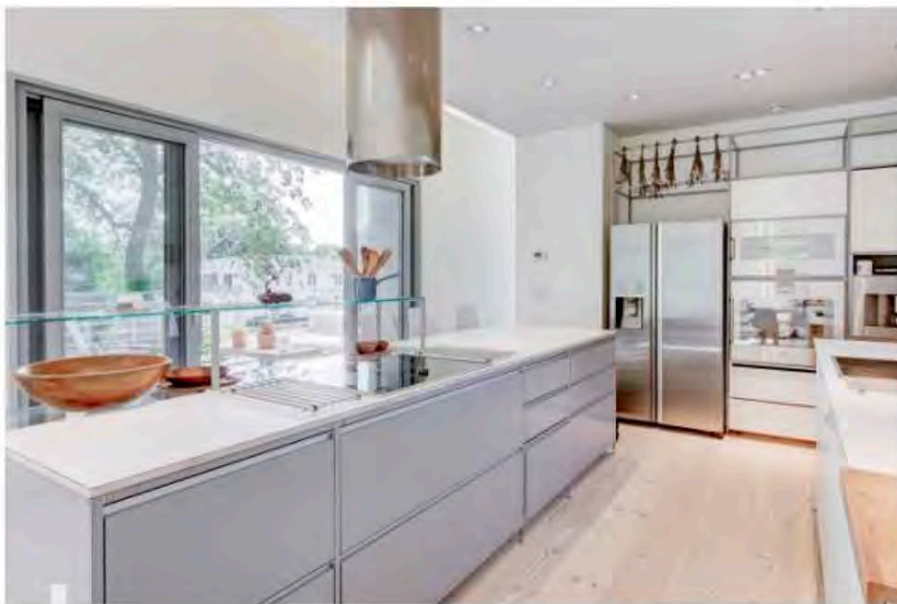
## THE REMODELING INDUSTRY

BRINGS SUCCESS ON MANY LEVELS TO MARY KATHRYN REESE

PHOTO BY  
JIN KIM, JIN KIM STUDIO



*Ruvati 57-inch workstation two-tiered ledge undermount sink.*



*The all-electric kitchen in the home of founder and principal of NYC-based architecture and design firm, The Turett Collaborative, was an essential part of this home designed to illustrate an environmentally-friendly lifestyle. It implements a modular Valcucine formaldehyde-free cabinet system, ENERGY STAR® appliances and lighting, a refrigerator with Beko HarvestFrest™ lighting technology (mimicing the 24-hour sun cycles to preserve food longer), an induction cooktop and a motorized damper exhaust duct to regulate airflow in the kitchen. Photo by Liz Glasgow*



*With smaller spaces in the work environment and sleeker, more practical design trends in retail and commercial spaces, REHAU tambour door systems offer a streamlined look combined with functionality and additional storage.*

### **...Exudes Wellness**

“Biophilic design” is an often used buzzword used by kitchen designers. The goal of connecting occupants with nature influences trends in finishes and textures while designs strive to capitalize on natural light. Indoor air quality (IAQ) concerns raise expectations for properly sized and carefully ducted range hoods to effectively draw smoke, odors and moisture out of the kitchen. Concern over the ill effects of natural gas on home IAQ have advanced induction cooking using electricity to heat pots and pans directly through magnetic induction, which offers the benefit of heating food much quicker and cooking it more evenly. Refrigerators and garbage disposals with UV filtration features and dishwashers with sanitization cycles have been the focus of other recent wellness-influenced product introductions.

*Alva is the perfect embodiment of MTI's The Bath as Art® philosophy. The freestanding tub has an organic oval-shaped bowl that rests snugly on a low-profile base.*



### Think Wood and Warmth

Blurring the lines between living areas and outdoor areas is no longer something just to consider with regard to the family room! A panoramic view from the bathroom is all part of the desired spa-like ambiance, meaning nature-inspired material choices are on trend.

One of the hottest trends is duckboard flooring—the slatted wood pieces you often see in saunas and boats. No need to avoid wood out of maintenance fears any more, thanks to new advancements in protective finishes.

As discussed in our recent feature on surfaces, tile is trending in warmer neutrals—beige now trumps white. Large format tiles not only are stylish and space-enlarging, they are also easier to keep clean.

## SINGLE CLOSE CONSTRUCTION LOANS

- Builder-Friendly Process
- Dedicated Construction Lending Division for more than 25 years
- New Build or Renovation Loans
- Up to 90% financing available

**CONTACT ME TODAY TO LEARN WHY BUILDERS REFER THEIR CLIENTS TO COLONIAL:**



**Tom Perritte, Mortgage Loan Officer**  
NMLS 621680  
O: 817.282.8892 ext 1620 | C: 214.663.6613  
Tom.Perritte@gocolonial.com  
[www.GoColonial.com/TomPerritte](http://www.GoColonial.com/TomPerritte)

*Let us help you build more homes this year!*



Rates and terms subject to change without notice. This is not a firm offer of credit, or a pre-approval. All applicants are assessed following a completed application. Colonial National Mortgage is a division of Colonial Savings F.A. NMLS 401285

