

DIY OR PRO? Renovation Decision Guide

# UPGRADE YOUR FARMHOUSE

Presented by *American Farmhouse Style*

## Get Your Dream Home

From New  
Builds to  
Custom and  
DIY Renovations

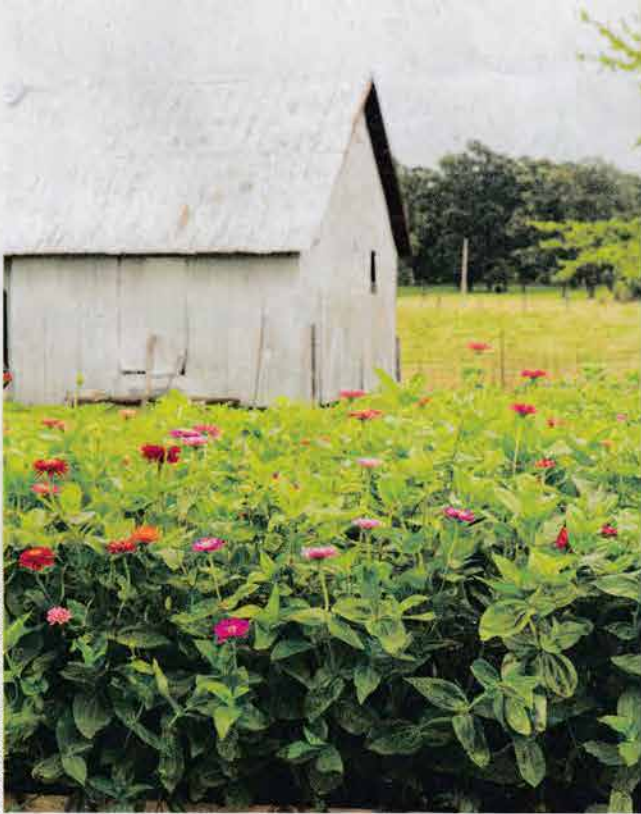
**ROOM BY ROOM**  
Building and Style Guide

**EXTERIORS AND  
ARCHITECTURE**  
For the Best Curb Appeal

2022 • Display until 12/06/2022  
Engaged Entertainment Plus • \$12.99 US



Engaged Media LLC



What about outbuildings on your property? If you happen to have an old barn nearby, you've hit the jackpot. If not, you can build a shed or garden shed that looks like a barn in the backyard. Homeowner Tina Keith framed the nearby barn with a cut flower garden of zinnias.



Make sure your front porch is wide enough to allow for a few rocking chairs and a shaded view of the yard. Homeowner Kierste Wade made the most of her old New York farmhouse porch by painting the front door black to pop against the white façade.

## GET THE LOOK |

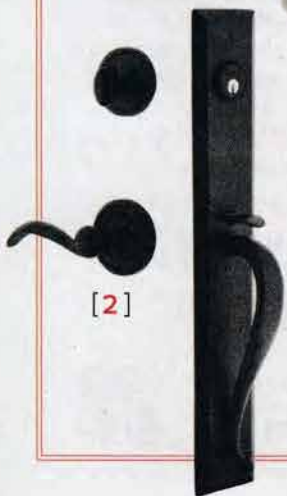
1. Suspense outdoor wall light, starting at \$279. (866) 954-4489 or [lightology.com](http://lightology.com).
2. Keep one-piece handle set, \$379.75. (800) 522-7336 or [agelessironhardware.com](http://agelessironhardware.com).
3. Sailors knot doormat, starting at \$68. (866) 597-2742 or [serenaandlilly.com](http://serenaandlilly.com).
4. Welcome to our farmhouse post box, \$87. Visit [houzz.com](http://houzz.com).
5. Laramie wall sconce, starting at \$402. (800) 407-8784 or [barnlight.com](http://barnlight.com).



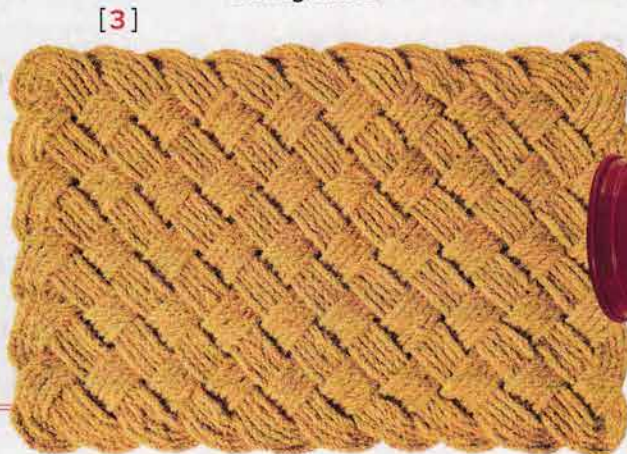
[1]



[4]



[2]



[3]

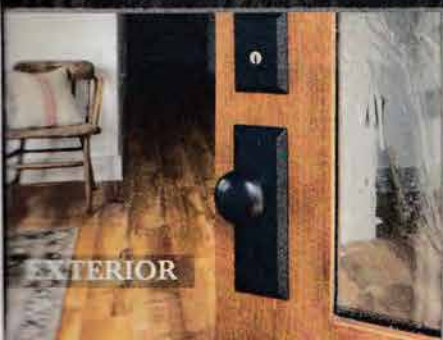


[5]

# AGELESS IRON®



[www.agelessironhardware.com](http://www.agelessironhardware.com)



EXTERIOR



INTERIOR



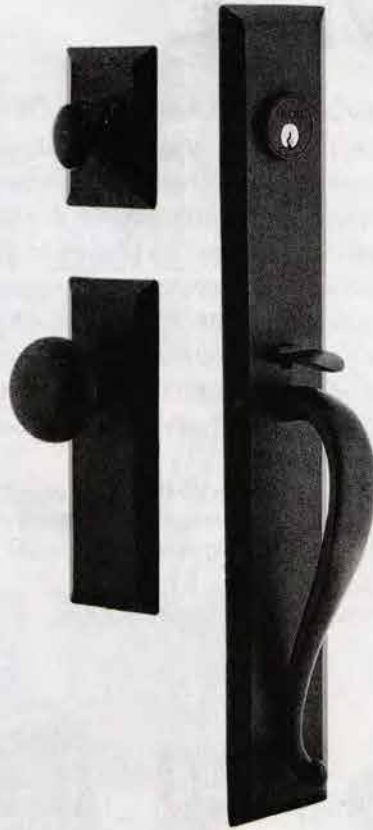
ACCESSORIES

# H

## HARDWARE

For door hardware, matte-black metal is a trending look for the farmhouse. “Adding matte-black metal accents is a key strategy to achieving an authentic modern farmhouse look,” says Holly Weyand of Ageless Iron Hardware. You can change out the door hardware both inside and outside for an upgraded feel. “Adding new door hardware is an easy way to bring new life to any room. And there’s no rule that says you can’t do a single room at a time,” Holly says. Ageless Iron Hardware offers both interior and exterior door sets, as well as pulls and knobs for cabinets.

**INSIDER TIP:** “Before making a [door hardware] purchase, be prepared with dimensions, including door thickness and backset size,” Holly says. Having the wrong dimensions can derail your hardware project.



# J

## JUTE RUGS

Jute is a long plant fiber that’s spun into strong, coarse thread. “Jute is an ideal material for floor coverings,” says Samantha Gann, Director of Marketing at Rugs.com. “Not only is it durable and a great rug for high-traffic areas, jute is also eco-friendly and made from natural materials.” Interior designers and design enthusiasts love jute rugs because they’re versatile, look great in any room and coordinate with just about any décor. Plus, jute is perfectly suited to farmhouse style due to its historical use in grain sacks. Many of the jute rugs on Rugs.com are hand-woven and will lend your farmhouse an artisan feel.

**INSIDER TIP:** Jute is a good material for outdoor rugs, as well as indoor rugs. Look specifically for outdoor rugs when shopping online, and if you have pets or kids, try an outdoor rug inside for durability.

# I

## INDUSTRIAL ACCENTS

Farmhouse style naysayers who unfairly dismiss the aesthetic as too feminine or “cute” haven’t explored the possibilities of industrial farmhouse style. If you’re renovating an older house, consider exposing an original brick wall, or retain and restore polished concrete floors, wood ceiling beams and other rugged wooden elements. Newer builds that incorporate salvaged materials can achieve similar effects. Too much “industrial” and not enough “farmhouse” can make you feel like you’re punching a clock rather than relaxing at home. Mix in some softness amidst the industrial elements, like a velvet sofa, lush rugs or traditional chandeliers to create a homey balance.

**INSIDER TIP:** For a specifically farmhouse-industrial look, add metal light fixtures, black window frames and exposed brick walls.



PHOTOGRAPH COURTESY OF RUGS.COM