

# designNJ

NEW JERSEY'S HOME & DESIGN MAGAZINE

February/March 2024



## INSPIRING KITCHENS!

LIBBY LANGDON  
TRANSFORMS A SUMMIT HOME

DESKS & GAME TABLES

\$5.99 03>



0 71486 01916 9



# Personality & Panache

COLOR, PATTERN AND ORIGINALITY INSPIRE A HOME RENOVATION IN SUMMIT

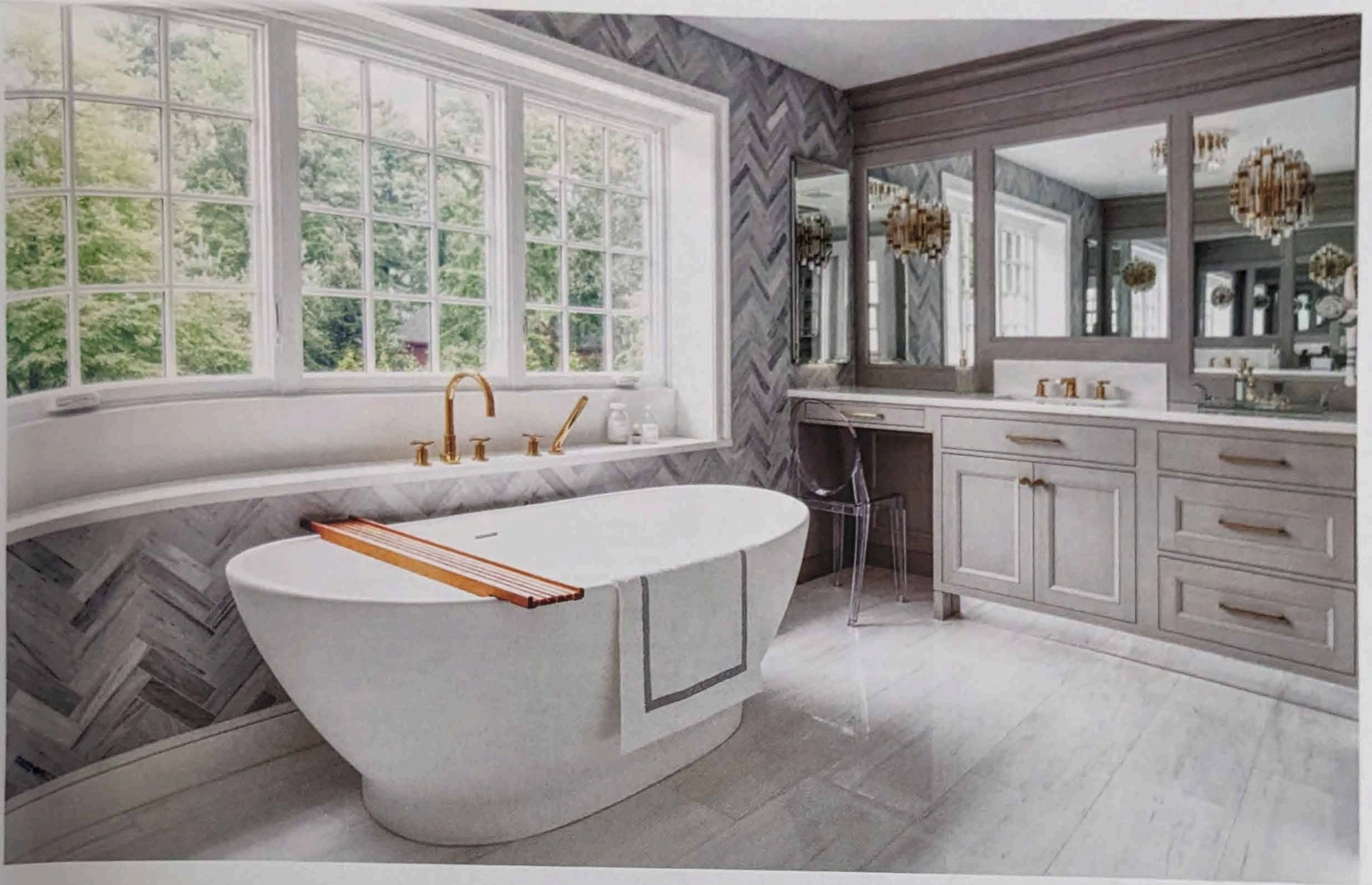


When Daniel and Melissa Tassé purchased their traditional Colonial-style home in Summit, they recognized its potential and began to explore ways to change up the interior to get the look and functionality they needed — all with their own personal stamp.

After consulting with architect John James, AIA, principal of John James Architecture in Maplewood, they embarked on a gut renovation alongside

The foyer announces the clients' love of color and pattern and says "Welcome, we have fun here!" designer Libby Langdon says. "Oftentimes, foyers are treated as a pass-through space or don't get as much design love as living and dining rooms, but it's the perfect way to kick off the dynamic design of your home."





Serene and peaceful, the primary bedroom contains a hushed palette of pale gray, silver, cream and champagne tones. "I wanted to add some texture but in a soft way, so we did a wonderful putty-toned wood veneer wallpaper on the wall behind the bed for subtle dimension," Langdon says. Flocked silverleaf wallpaper on the ceiling inset adds a touch of glam. "When the chandelier is lit, the ceiling reflects the most beautiful glow," Langdon says.

The primary bath's bold stone pattern in the shower is tempered by its subtle colorway. "Brass hardware and fixtures add such a warmth to the bathroom space with all the pale gray in the stone and vanities," Langdon says.

"I love the herringbone stone the clients chose for the window wall," Langdon says. "It's striking and such a beautiful backdrop for the tub." Crystal rod sconces mounted directly on the mirrors "have just enough glitz and are reflective even if they are not turned on."

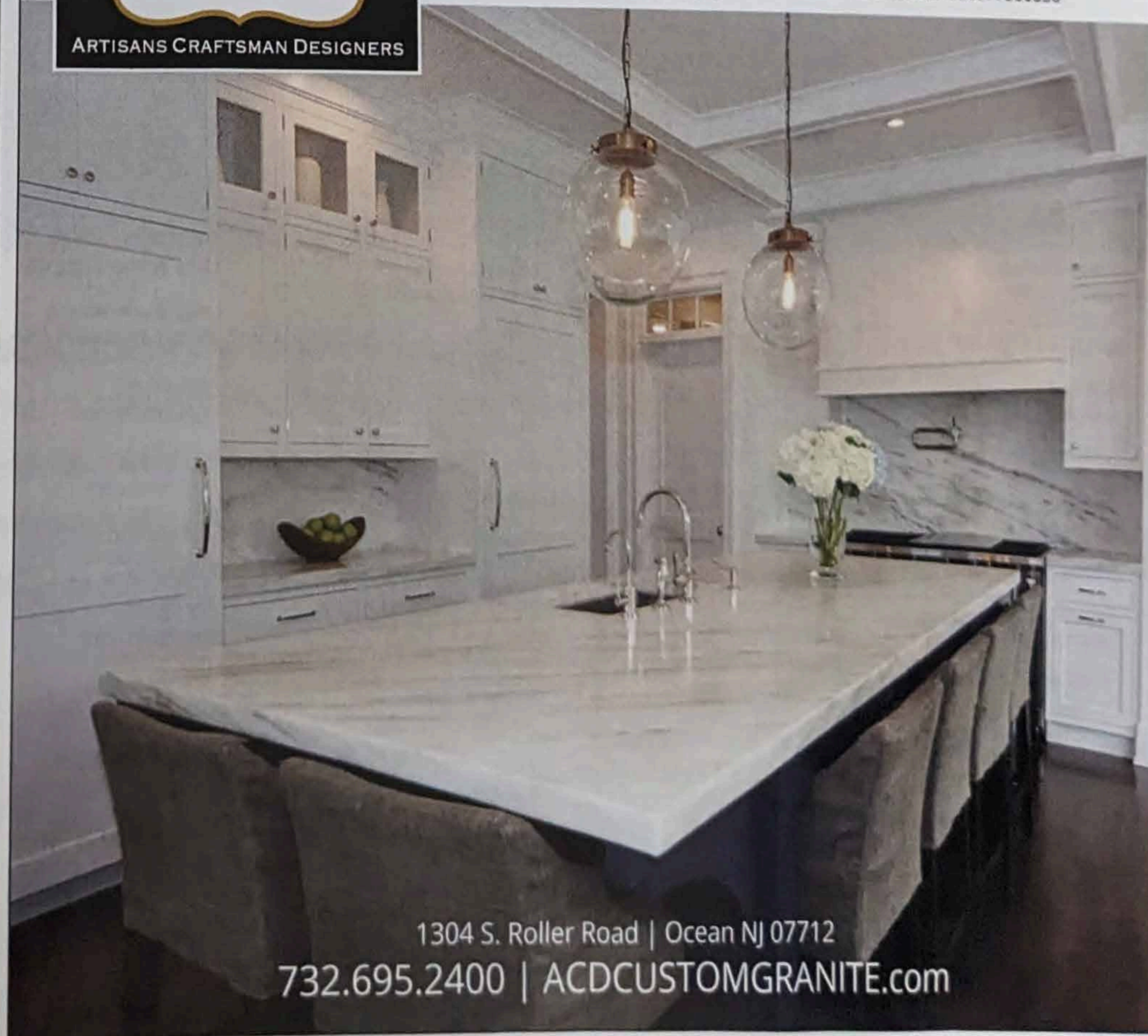
for Fairfield; nightstands, bench and club chairs; Vanguard Furniture; table lamps (on nightstands), Ralph Lauren; bedding, Eastern Accents; window treatments and Roman shades, Kravet fabric with Samuel & Son's trim tape; wallpaper on accent wall, Phillip Jeffries; wallpaper on inset ceiling; York Wallcoverings; chandelier, Hudson Valley Lighting Group. **Primary Bathroom:** custom vanity, Canterbury Designs; light fixtures, Visual Comfort & Co.; freestanding tub, MTI Baths; all tile, Chester Tile & Marble Inc. in Morristown.

For contact information, page 64



## CUSTOM FABRICATORS SERVING THE TRI-STATE AREA

Like Us on Facebook!  
[www.facebook.com/pages/ACD-Custom-Granite/224730577580850](https://www.facebook.com/pages/ACD-Custom-Granite/224730577580850)



1304 S. Roller Road | Ocean NJ 07712  
732.695.2400 | [ACDCUSTOMGRANITE.com](http://ACDCUSTOMGRANITE.com)