

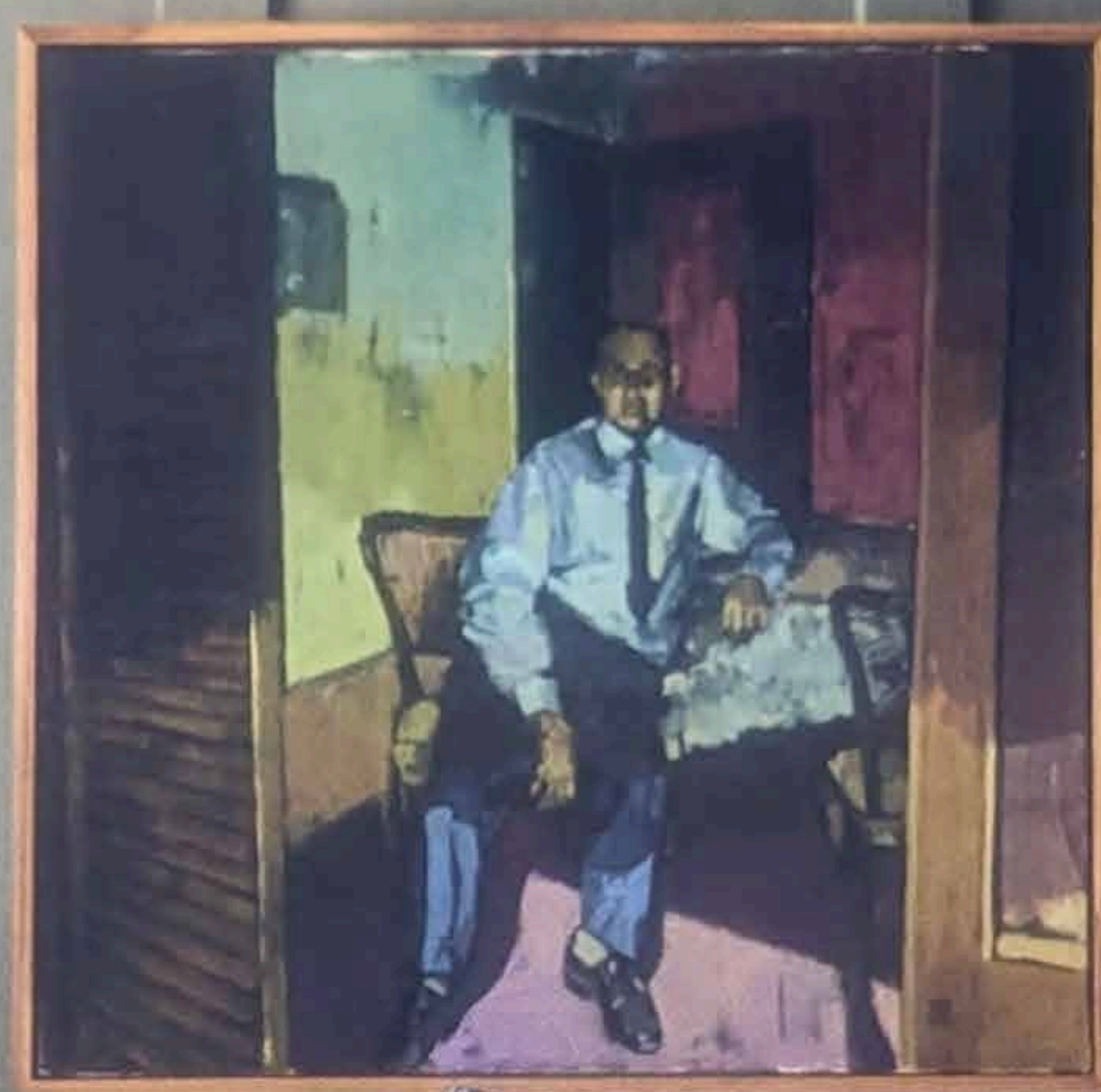
CANADIAN 

MAY 2025

HOUSE & HOME

MOODY HUES

SPRING'S
NEW LOOK



**ROSIE DAYKIN
DOES IT AGAIN!**

See page 46

**FRESH
IDEAS
FOR YOUR
ROOMS**

**City
Column:
Calgary**

CECE BOWMAN
TOM DESIGN
COLLECTIVE
JENNIFER KOMINEK

Display until May 19

\$8.99



houseandhome.com

Plus

TAHINI BABY:

Eden Grinshpan's Best Hummus



TOP LEFT: The romantic principal suite occupies an entire wing on the first floor. "French doors open onto the pool and there's a sitting room and fireplace," says Cece. "They can close the doors and have complete privacy; it's like a mini apartment." **Wall covering,** The Walfab Company; **dresser,** Jonathan Adler.

BOTTOM LEFT: All of the rooms in the house face the central courtyard. In the principal ensuite, you can take in the view from the tub or enjoy the outdoor shower. **Wallpaper,** Seema Krish; **roman blind fabric,** Schumacher.

"Because their kids are just starting to learn to live together, the couple wanted to create a space that was fun, but with different places where family members could retreat to rather than always be together," says Cece.

The home is a symphony of carefully orchestrated motifs and gutsy, mood-altering pastels. "When we started the design, the homeowners loved the idea of experimenting with patterns and colours," says Cece. "The only thing they didn't want was boring!"

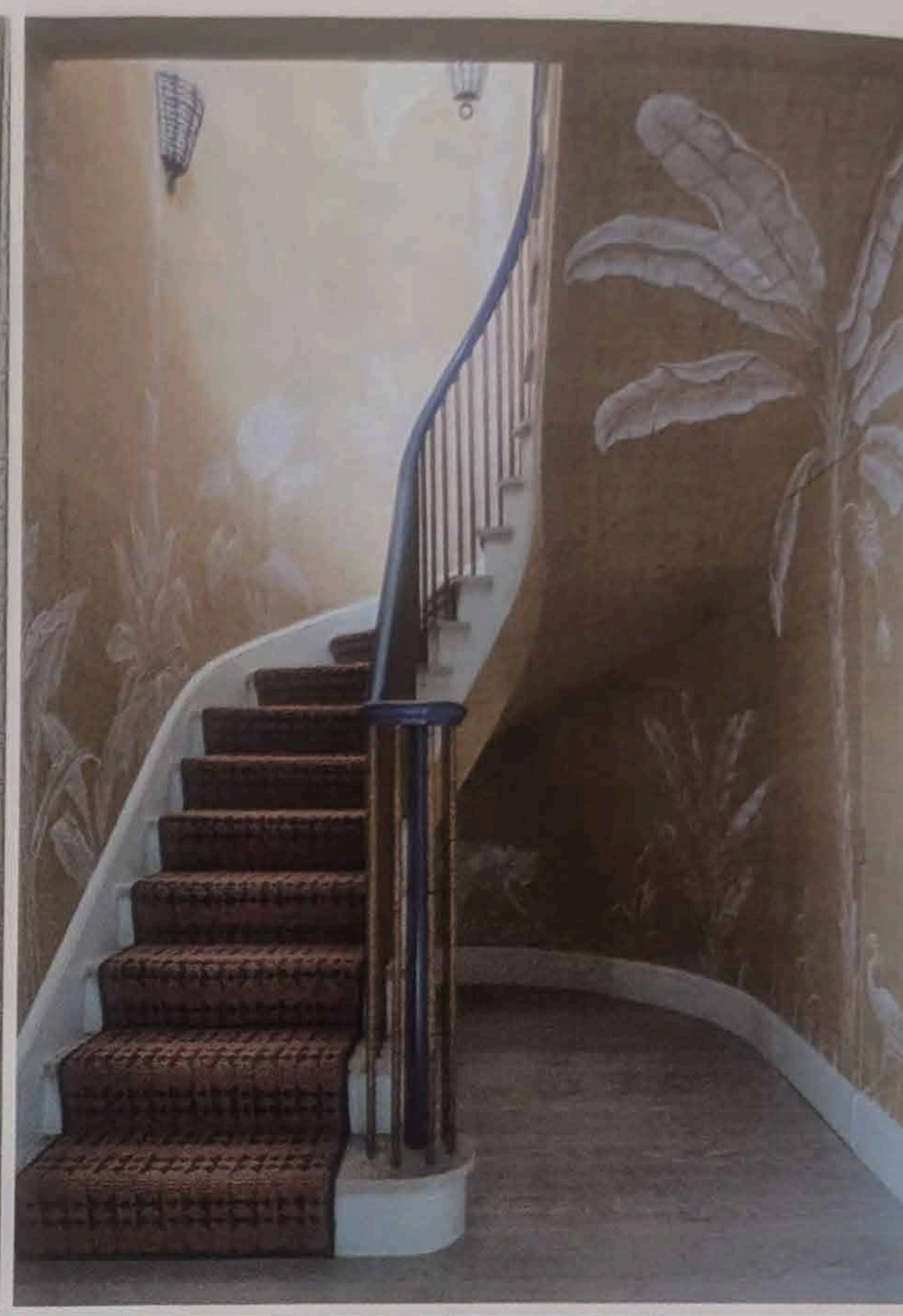
To get started, the designer picked out around a hundred fabrics, threw them on the floor and began sorting and organizing them. "The palette started with the fabric selection," says Cece. "It was a lot of work, but when things are meant to be together, it happens easily, and when you're struggling with something, it's usually because it's not right."

Striking pattern combinations start in the vestibule, where the walls are covered in graphic emerald green patterned fabric, then move to the foyer, where the walls and ceiling are swathed in a teal and blue undersea-leaf wallpaper, then travel to the cabana kitchenette, with its cotton-candy pink cabinets. Pattern is everywhere, from the floors, walls and ceilings to the drapes, rugs and upholstery to the kitchenette backsplash and even the air-conditioning registers. "The key is that every pattern is different and every colour we used is slightly 'off,'" says Cece. For example, the hues here aren't straightforward primary colours; instead, it's a grey-blue or a coral red. "We didn't make everything perfectly match, which created the common, unifying thread — each space is unique."

In her clients' home, the decorating effect is at once nostalgic and contemporary, calming and exuberant, deliberate and delirious. "When you walk into this space, you feel completely enveloped," says Cece. "The family sent me a video of all of them dancing, music on loud and smiles on their faces, and I knew we'd achieved our goal." **H&H**



“The element of the unexpected and the idea of privacy were key” — AUSTIN DEPREE, ARCHITECT



A fresh, sky blue palette and details like hand-painted sconce shades make one daughter's bedroom feel both calm and personal. **Wallpaper**, Victoria Larson; **headboard**, Oomph; **bed linens**, Matouk.

TOP LEFT: Cece used a collection of car photos when designing the son's bedroom. The idea was to create a comfortable look he could grow into. **Wallpaper**, Thibaut; **bed linens**, Matouk.

TOP RIGHT: A palm tree hand painted on a raffia wall covering turns a small stairway into a surprising tropical trip. **Wall covering**, Pacific Designs International.

BOTTOM LEFT: “The homeowners loved playing with scale,” says Cece, who bumped up the joint size of the shiplap lining the corridor leading to the kids' rooms on the second floor to emphasize the architectural detail. **Pendants**, The Kemble Shop; **sconces**, 1stDibs.

PRINCIPAL SUPPLIERS

1stDibs, 1stdibs.com

Artistic Frame,

artisticframe.com

Avery Boardman,

averyboardman.com

Benjamin Moore, 1-855-724-6802

or benjaminmoore.ca

Chairish, chairish.com

Charles Stewart,

charlesstewartcompany.com

Clima Home, climahome.com

Design Within Reach, dwr.com

Doorman Designs,

doormandesigns.com

Fisher Weisman Collection,

fisherweisman.com

Jonathan Adler, jonathanadler.com

Julie Neill, julieneill.com

The Kemble Shop,

thekembleshop.com

Matouk, matouk.com

Oomph, oomphhome.com

Pacific Designs International,

pacificdesigns.net

Palecek, palecek.com

Pierre Frey, pierrefrey.com

Radish Moon, radishmoon.com

Sabine Hill, sabinehill.com

Schumacher, schumacher.com

Seema Krish, seemakrish.com

Shades from the Midnight Sun,

instagram.com/midnightsunshades

Thibaut, thibautdesign.com

Tiles of Ezra, tilesofezra.com

Victoria Larson, victoria-larson.com

The Walfab Company, walfab.net

Weplight, weplight.com

Pages 64 and 65: Pendants, Weplight;

backsplash, Tiles of Ezra. **Page 66:**

Top left: Gate colour, Pink Cloud (887),

Benjamin Moore. **Bottom left:** Wallpaper,

Schumacher; pendant, Shades from the

Midnight Sun. **Right:** Pendant, Julie Neill;

roman blind fabric, Radish Moon; chairs,

Design Within Reach. **Page 67: Top:**

Armchair, Palecek. **Bottom:** Chandelier,

Fisher Weisman Collection; dining table,

Doorman Designs; dining chairs, Artistic

Frame. **Page 68: Top left:** Table, Clima

Home. **Top right:** Faux bamboo armchair,

Chairish. **Page 69: Top:** Wallpaper, Pierre

Frey; sofa, Avery Boardman; coffee table,

Charles Stewart. **Bottom left:** Wallpaper,

Pacific Designs International; floor tile,

Sabine Hill. **Page 70: Top:** Wall covering,

The Walfab Company; dresser, Jonathan

Adler. **Bottom left:** Wallpaper, Seema

Krish; roman blind fabric, Schumacher.

Page 71: Top left: Wallpaper, Thibaut;

bed linens, Matouk. **Top right:** Wall

covering, Pacific Designs International.

Bottom left: Pendants, The Kemble Shop;

sconces, 1stDibs. **Bottom right:** Wallpaper,

Victoria Larson; headboard, Oomph; bed

linens, Matouk. **H&H**

In the Next Issue

JUNE

THE ADVICE ISSUE

Beautiful homes
to inspire you,
plus real-life design
solutions and
budgeting tips.



**MAAYAN KESSLER
AND JO LEVITAN
CREATE CALM AND
CONTEMPORARY
INTERIORS FOR
THEIR CLIENTS**

**SUZANNE DIMMA DESIGNS
A SWOON-WORTHY
BATHROOM**



**BRIAN McCOURT
DESIGNS AN INVITING
HOME FOR HIS MOM
WITH GREAT STYLE AND
A MODEST BUDGET**



ON SALE MAY 12